

337

LE

WILLIAM PUTNAM

Album de Tapisserie.

A. NÉ. MON. A. ROUYER

ANDRÉ - BÉRANGER Succ^r

Dessinateur. Broderies

Éditeur,

120, Rue S^t Denis,

PARIS.

P.L.

Déposé

10

20

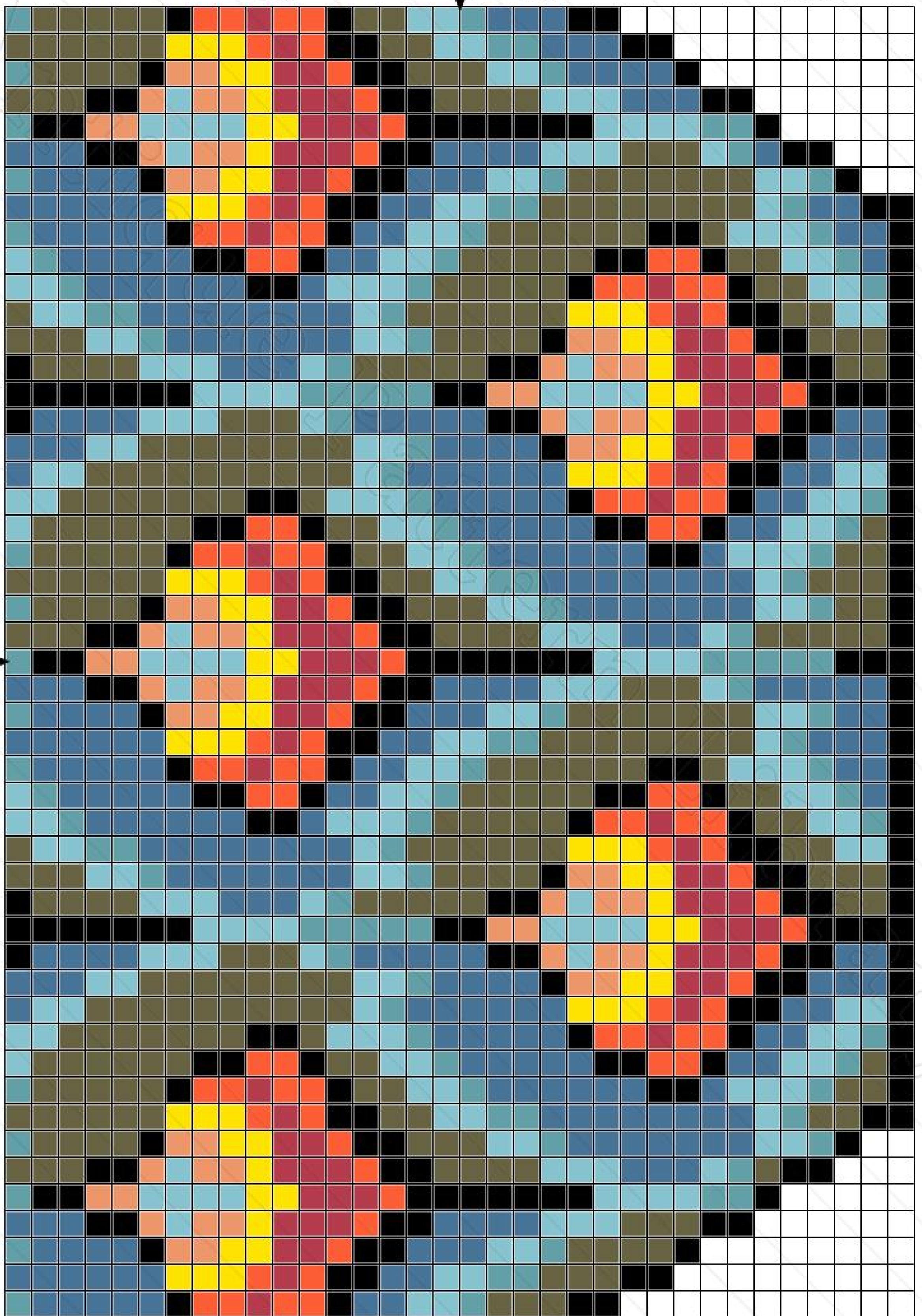
30

10

20

30

40



10

20

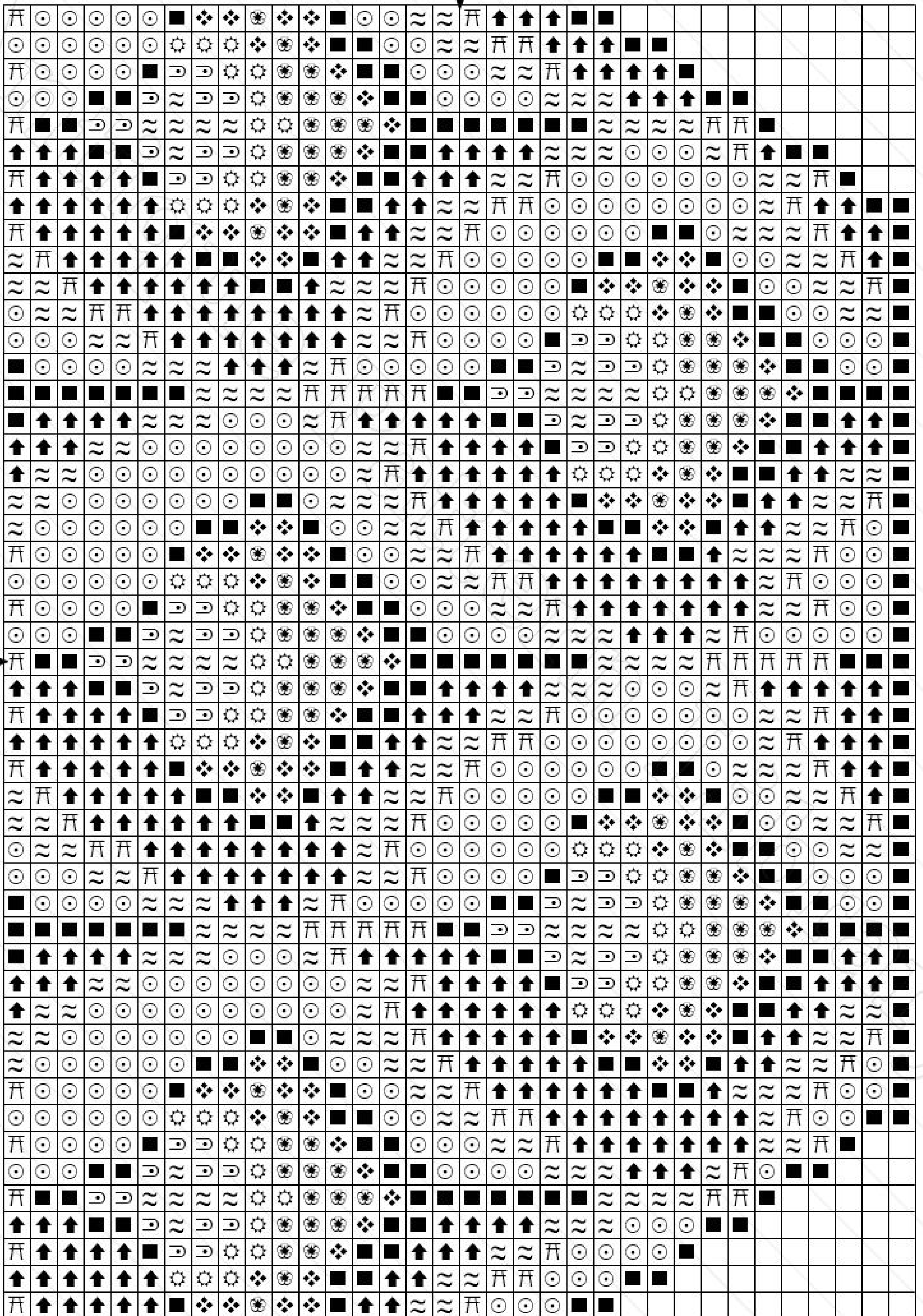
30

10

20

30

40



Title: B-SW050 Alexandre 337 Pattern 1
Author: Antique Pattern Library
Company: New Media Arts Inc.
Copyright: Creative Commons 4.0 NC SA BY
Free distribution only - NOT FOR SALE
Grid Size: 34W x 49H
Design Area: 2.43" x 3.50" (34 x 49 stitches)

Legend: Stitches

| | | |
|---|-----------------|-----------------|
| ■ | DMC Cotton 310 | black |
| ⊗ | DMC Cotton 973 | canary - br |
| ⊛ | DMC Cotton 326 | rose - vy dp |
| ☉ | DMC Cotton 922 | copper -lt |
| ⊙ | DMC Cotton 3787 | brown gray - dk |
| ❖ | DMC Cotton 608 | bright orange |
| ↑ | DMC Cotton 322 | baby blue - dk |
| ≈ | DMC Cotton 598 | turquoise - lt |
| ⌘ | DMC Cotton 807 | peacock blue |

10

20

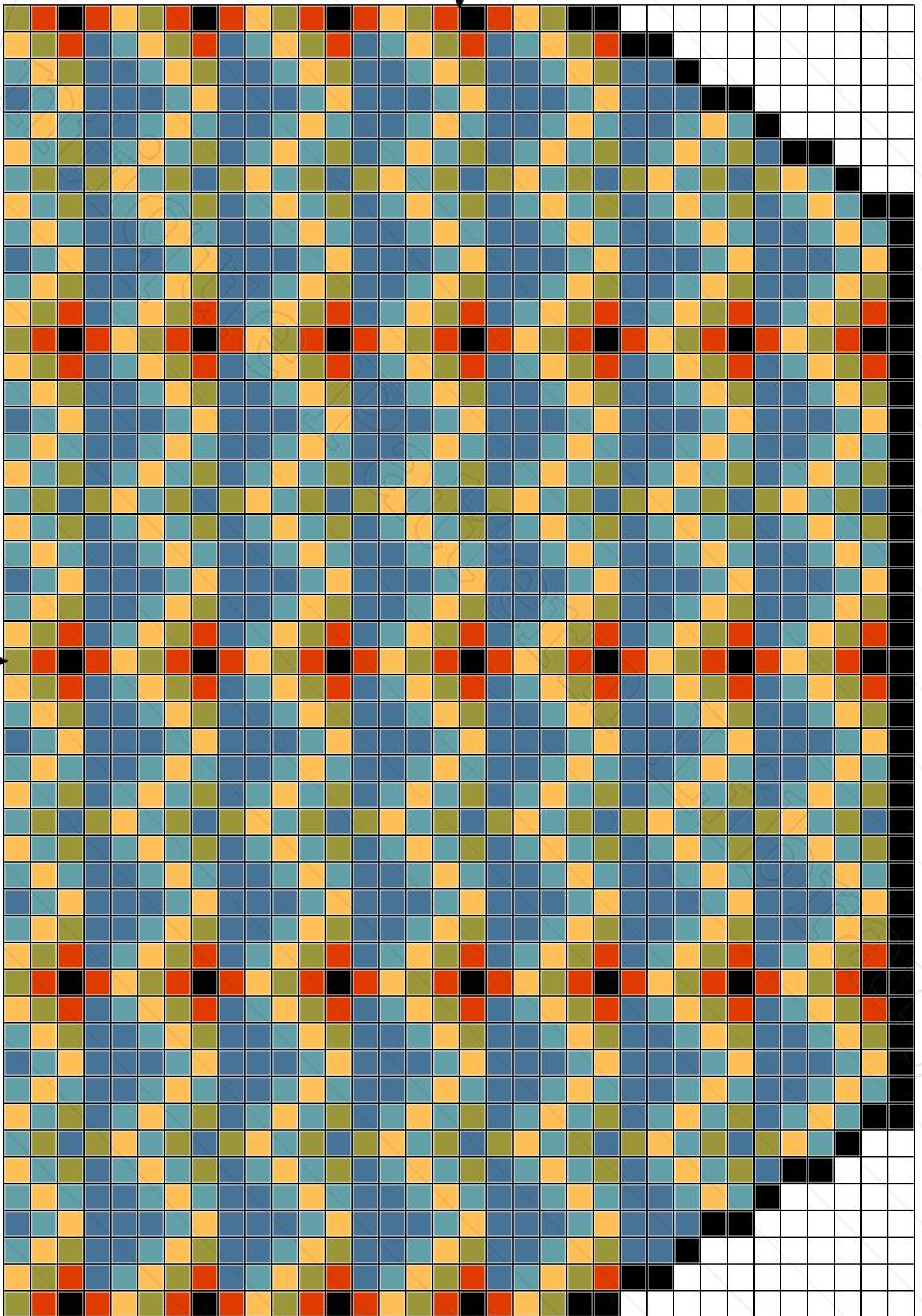
30

10

20

30

40



10

20

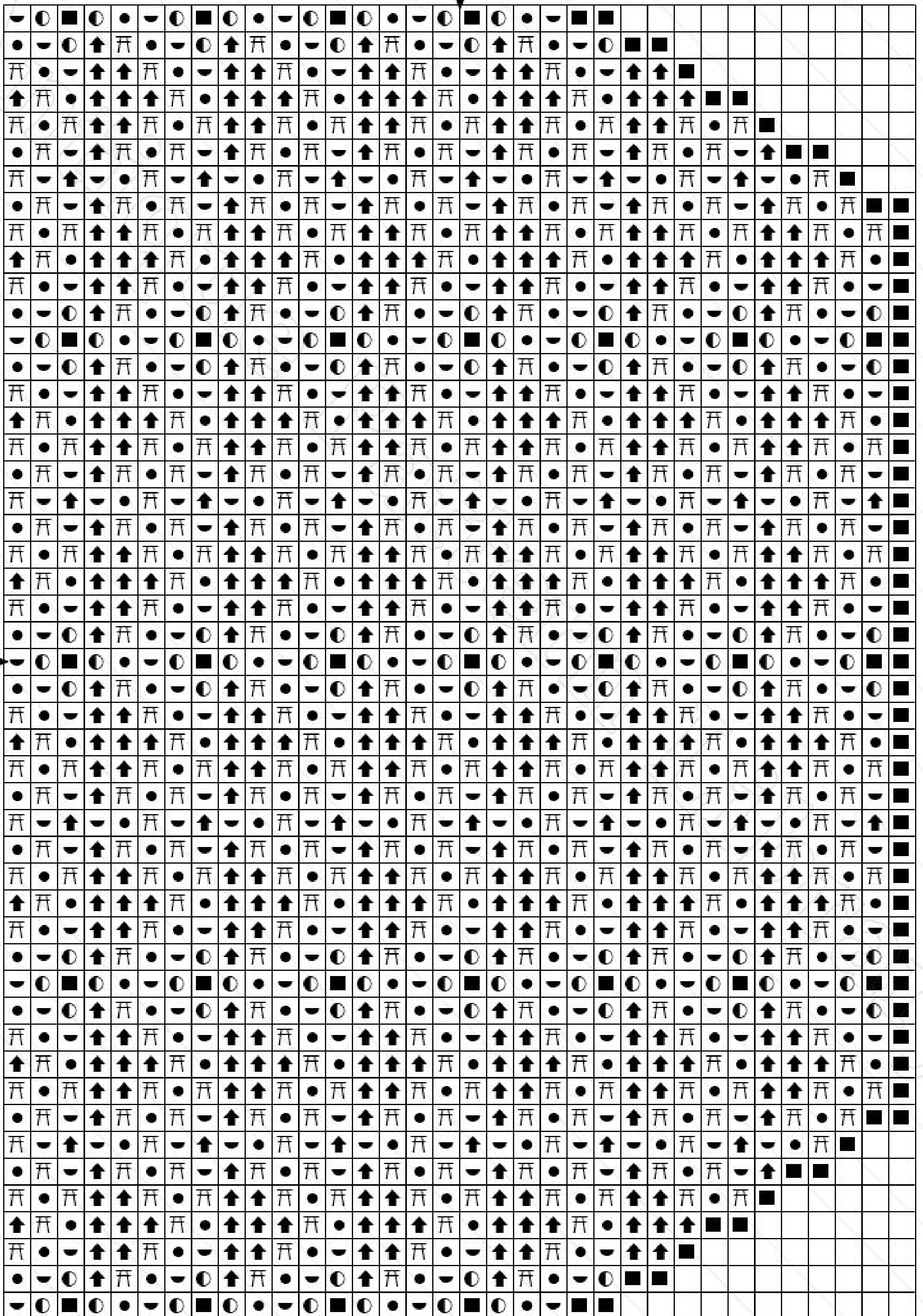
30

10

20

30

40



Title: B-SW050 Alexandre 337 Pattern 2
Author: Antique Pattern Library
Company: New Media Arts Inc.
Copyright: Creative Commons 4.0 NC SA BY
Free distribution only - NOT FOR SALE
Grid Size: 34W x 49H
Design Area: 2.43" x 3.50" (34 x 49 stitches)

Legend: Stitches

| | | |
|---|----------------|-------------------|
| ■ | DMC Cotton 310 | black |
| ↑ | DMC Cotton 322 | baby blue - dk |
| ⦶ | DMC Cotton 807 | peacock blue |
| ● | DMC Cotton 742 | tangerine - lt |
| ○ | DMC Cotton 900 | burnt orange - dk |
| ◡ | DMC Cotton 731 | olive green - dk |

10

20

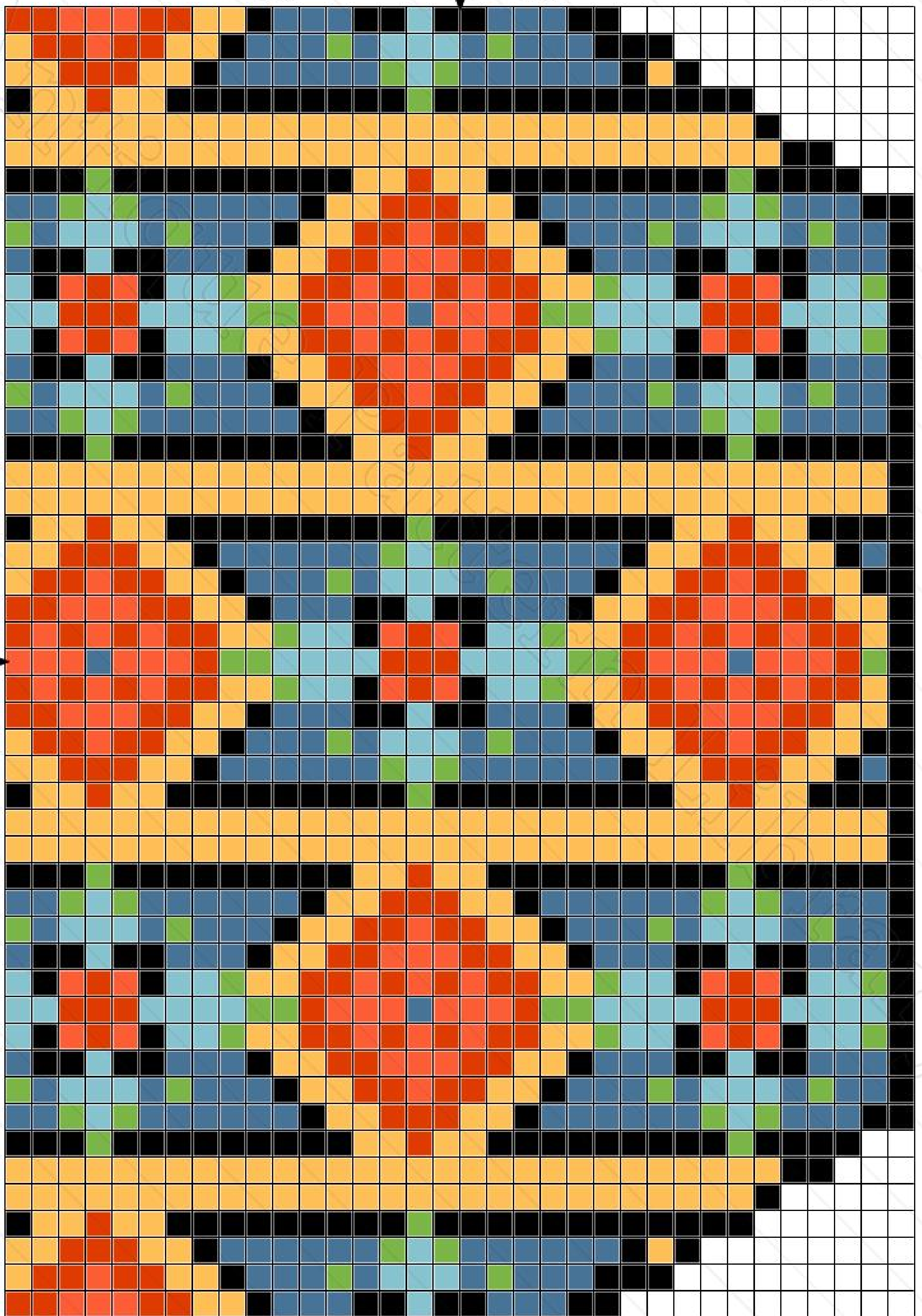
30

10

20

30

40



10

20

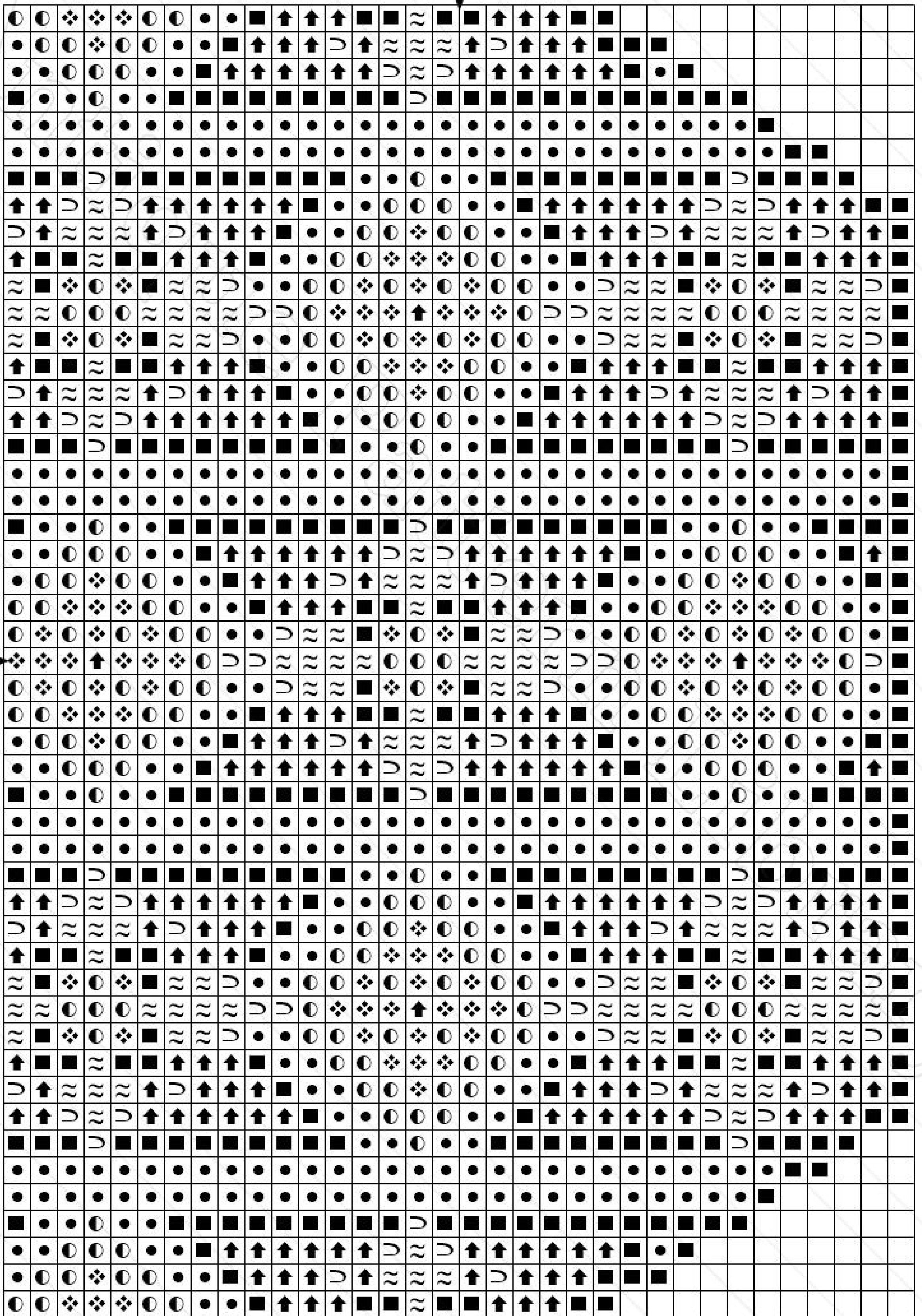
30

10

20

30

40



Title: B-SW050 Alexandre 337 Pattern 3
Author: Antique Pattern Library
Company: New Media Arts Inc.
Copyright: Creative Commons 4.0 NC SA BY
Free distribution only - NOT FOR SALE
Grid Size: 34W x 49H
Design Area: 2.43" x 3.50" (34 x 49 stitches)

Legend: Stitches

| | | |
|---|----------------|-------------------|
| ■ | DMC Cotton 310 | black |
| ❖ | DMC Cotton 608 | bright orange |
| ↑ | DMC Cotton 322 | baby blue - dk |
| ≈ | DMC Cotton 598 | turquoise - lt |
| ● | DMC Cotton 742 | tangerine - lt |
| ◐ | DMC Cotton 900 | burnt orange - dk |
| ∩ | DMC Cotton 703 | chartreuse |

10

20

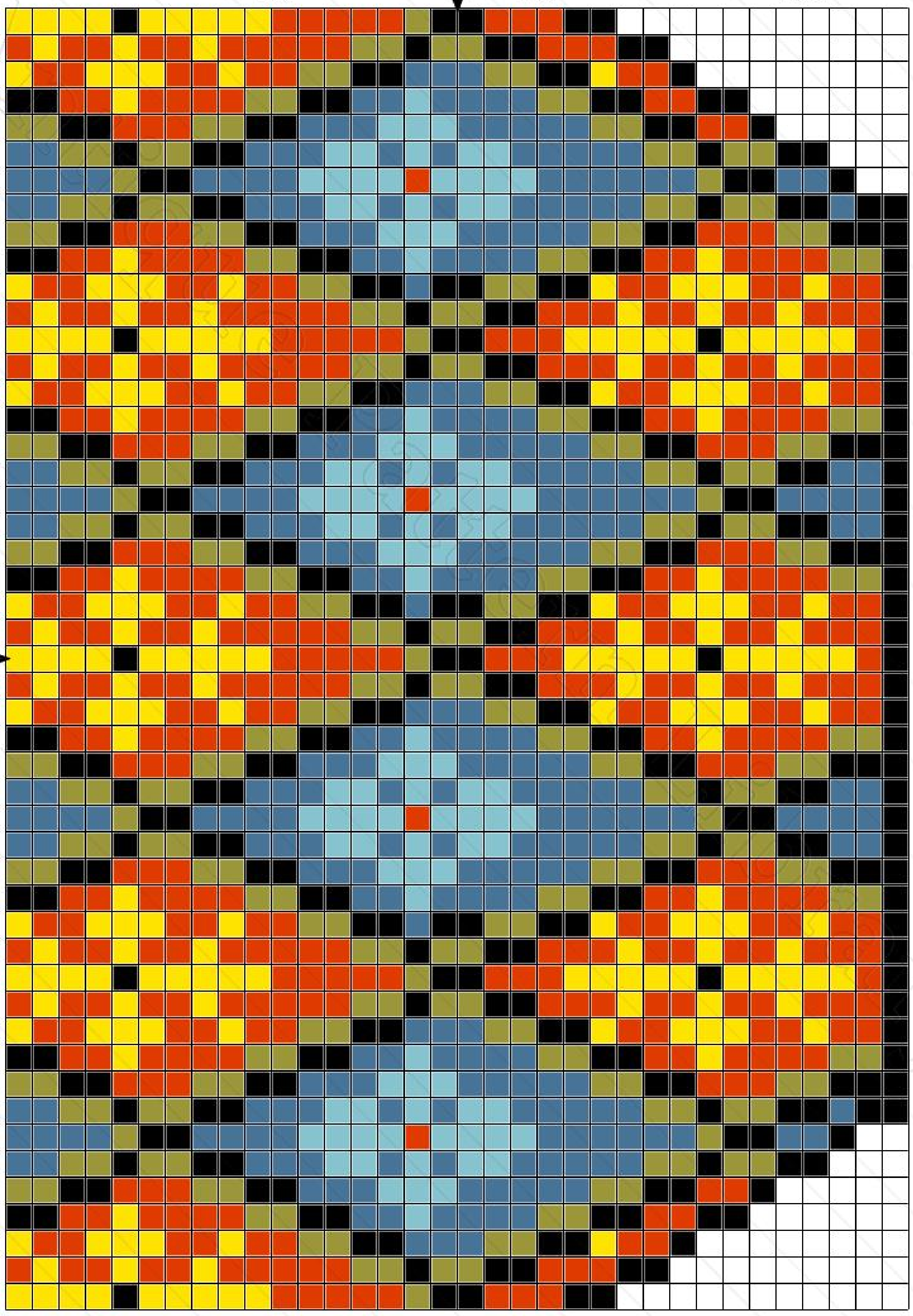
30

10

20

30

40



10

20

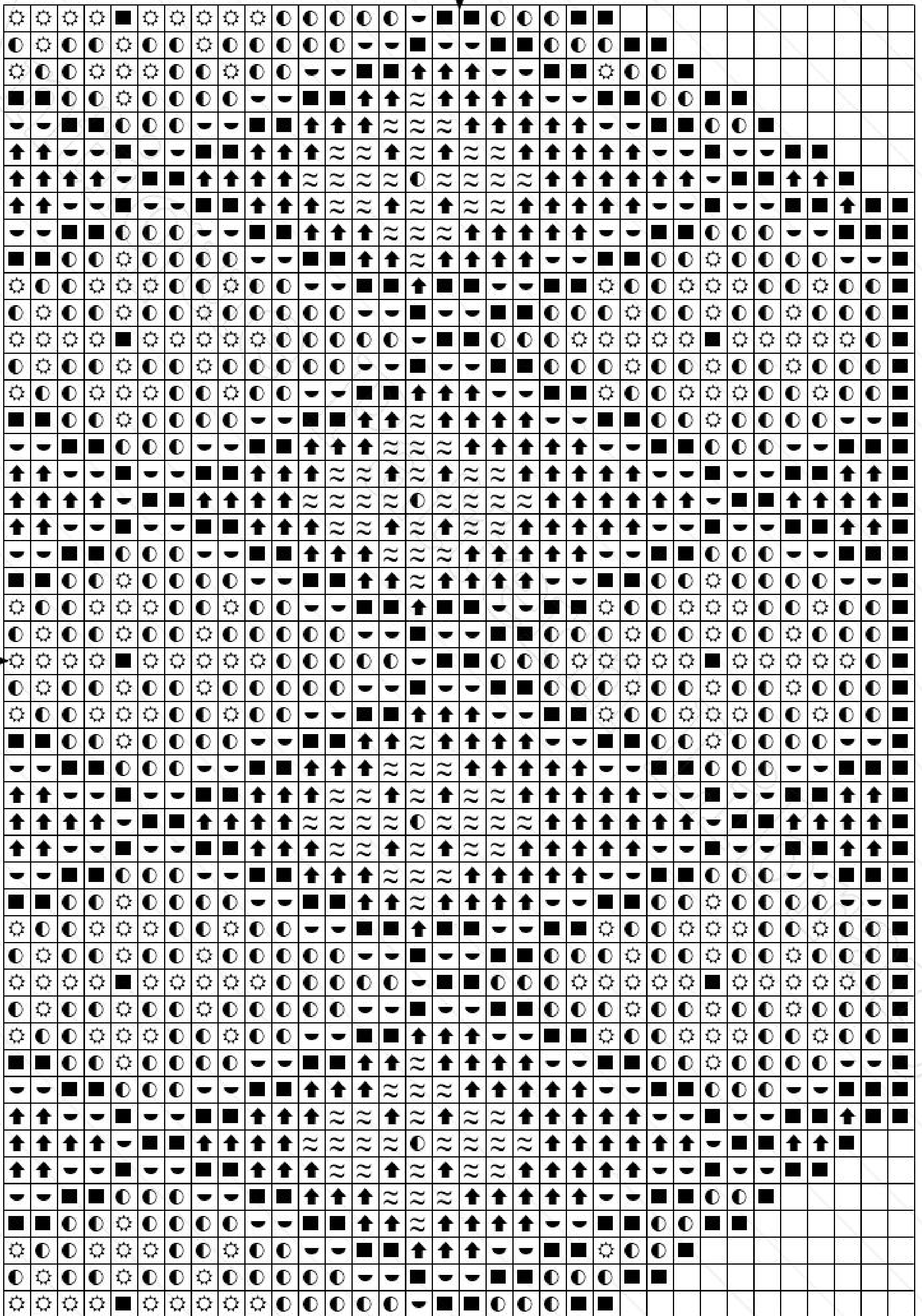
30

10

20

30

40



Title: B-SW050 Alexandre 337 Pattern 4
Author: Antique Pattern Library
Company: New Media Arts Inc.
Copyright: Creative Commons 4.0 NC SA BY
Free distribution only - NOT FOR SALE
Grid Size: 34W x 49H
Design Area: 2.43" x 3.50" (34 x 49 stitches)

Legend: Stitches

| | | |
|---|----------------|-------------------|
| ■ | DMC Cotton 310 | black |
| ⚙ | DMC Cotton 973 | canary - br |
| ↑ | DMC Cotton 322 | baby blue - dk |
| ~ | DMC Cotton 598 | turquoise - lt |
| ● | DMC Cotton 900 | burnt orange - dk |
| ◒ | DMC Cotton 731 | olive green - dk |

10

20

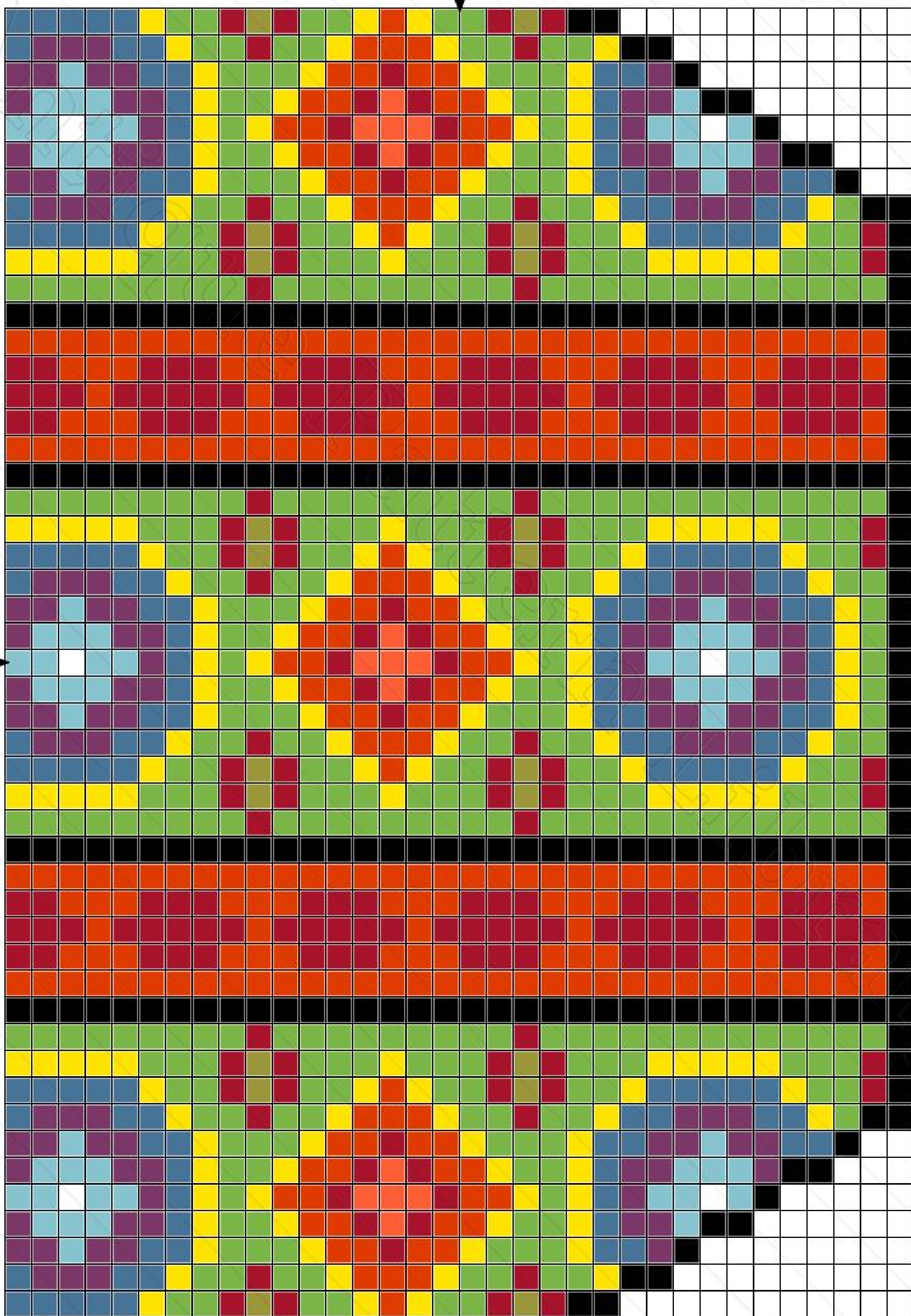
30

10

20

30

40



10

20

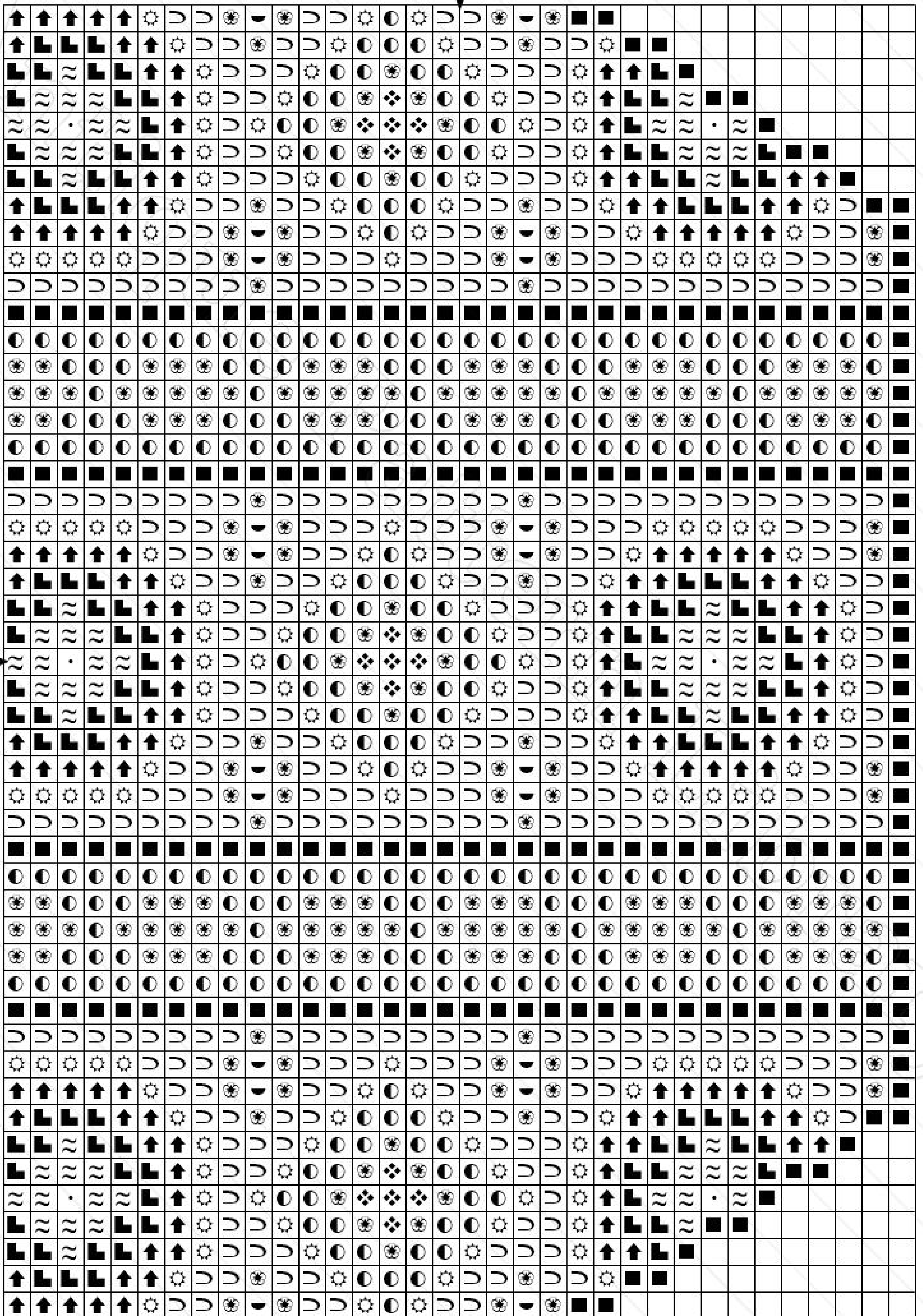
30

10

20

30

40



Title: B-SW050 Alexandre 337 Pattern 5
Author: Antique Pattern Library
Company: New Media Arts Inc.
Copyright: Creative Commons 4.0 NC SA BY
Free distribution only - NOT FOR SALE
Grid Size: 34W x 49H
Design Area: 2.43" x 3.50" (34 x 49 stitches)

Legend: Stitches

| | | |
|---|------------------|--------------------|
| ■ | DMC Cotton 310 | black |
| ☼ | DMC Cotton 973 | canary - br |
| ☼ | DMC Cotton 498 | christmas red - dk |
| ❖ | DMC Cotton 608 | bright orange |
| ↑ | DMC Cotton 322 | baby blue - dk |
| ~ | DMC Cotton 598 | turquoise - lt |
| ● | DMC Cotton 900 | burnt orange - dk |
| ◐ | DMC Cotton 731 | olive green - dk |
| ∩ | DMC Cotton 703 | chartreuse |
| · | DMC Cotton White | white |
| ⌒ | DMC Cotton 552 | violet – md |

10

20

30

10

20

30

40



10

20

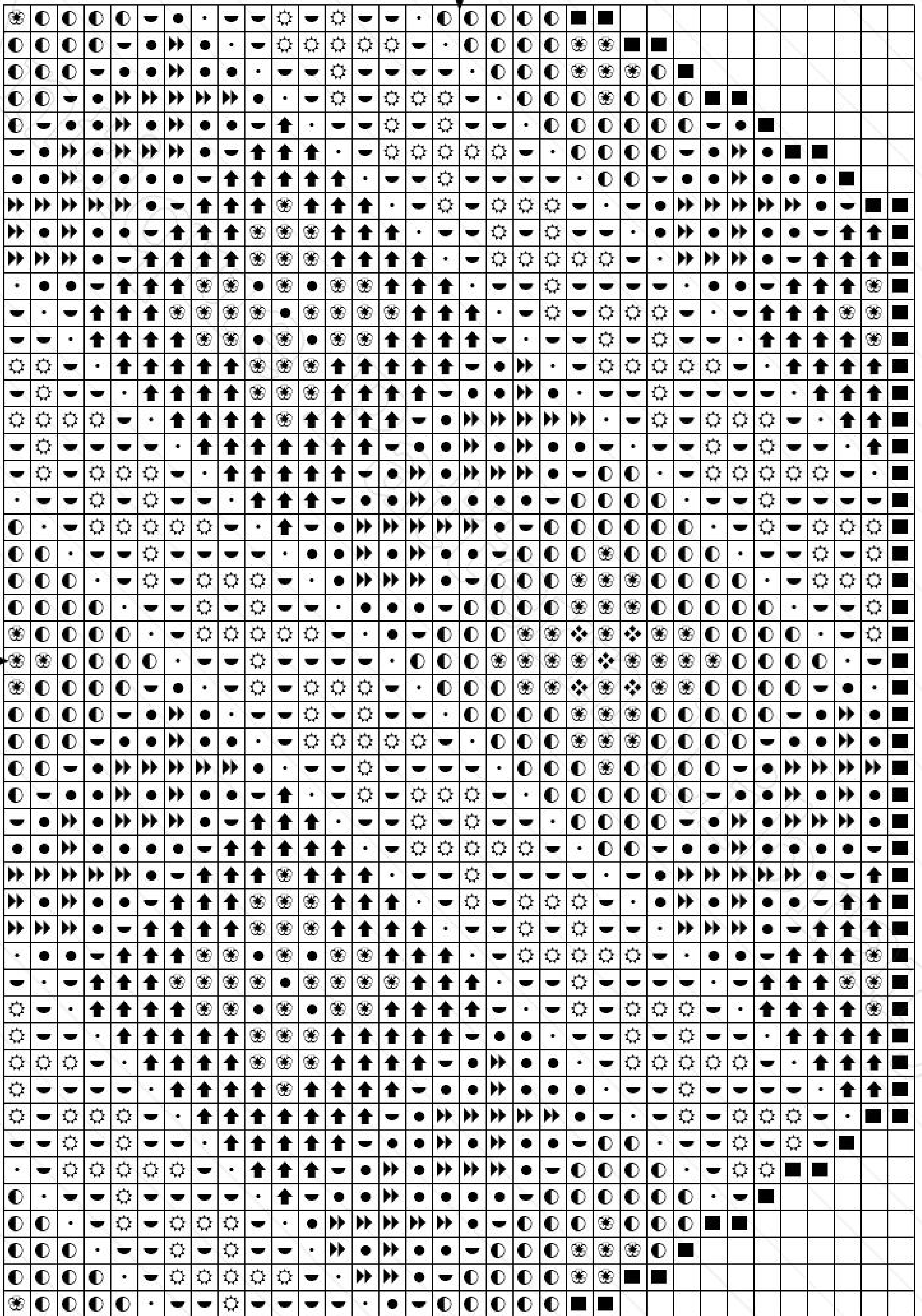
30

10

20

30

40



Title: B-SW050 Alexandre 337 Pattern 6
Author: Antique Pattern Library
Company: New Media Arts Inc.
Copyright: Creative Commons 4.0 NC SA BY
Free distribution only - NOT FOR SALE
Grid Size: 34W x 49H
Design Area: 2.43" x 3.50" (34 x 49 stitches)

Legend: Stitches

| | | |
|----|------------------|-------------------|
| ■ | DMC Cotton 310 | black |
| ⊙ | DMC Cotton 973 | canary - br |
| ⊛ | DMC Cotton 815 | garnet - md |
| ⊚ | DMC Cotton 608 | bright orange |
| ↑ | DMC Cotton 322 | baby blue - dk |
| ● | DMC Cotton 742 | tangerine - lt |
| ◐ | DMC Cotton 900 | burnt orange - dk |
| ◑ | DMC Cotton 731 | olive green - dk |
| • | DMC Cotton White | white |
| ▶▶ | DMC Cotton 400 | mahogany – dk |

10

20

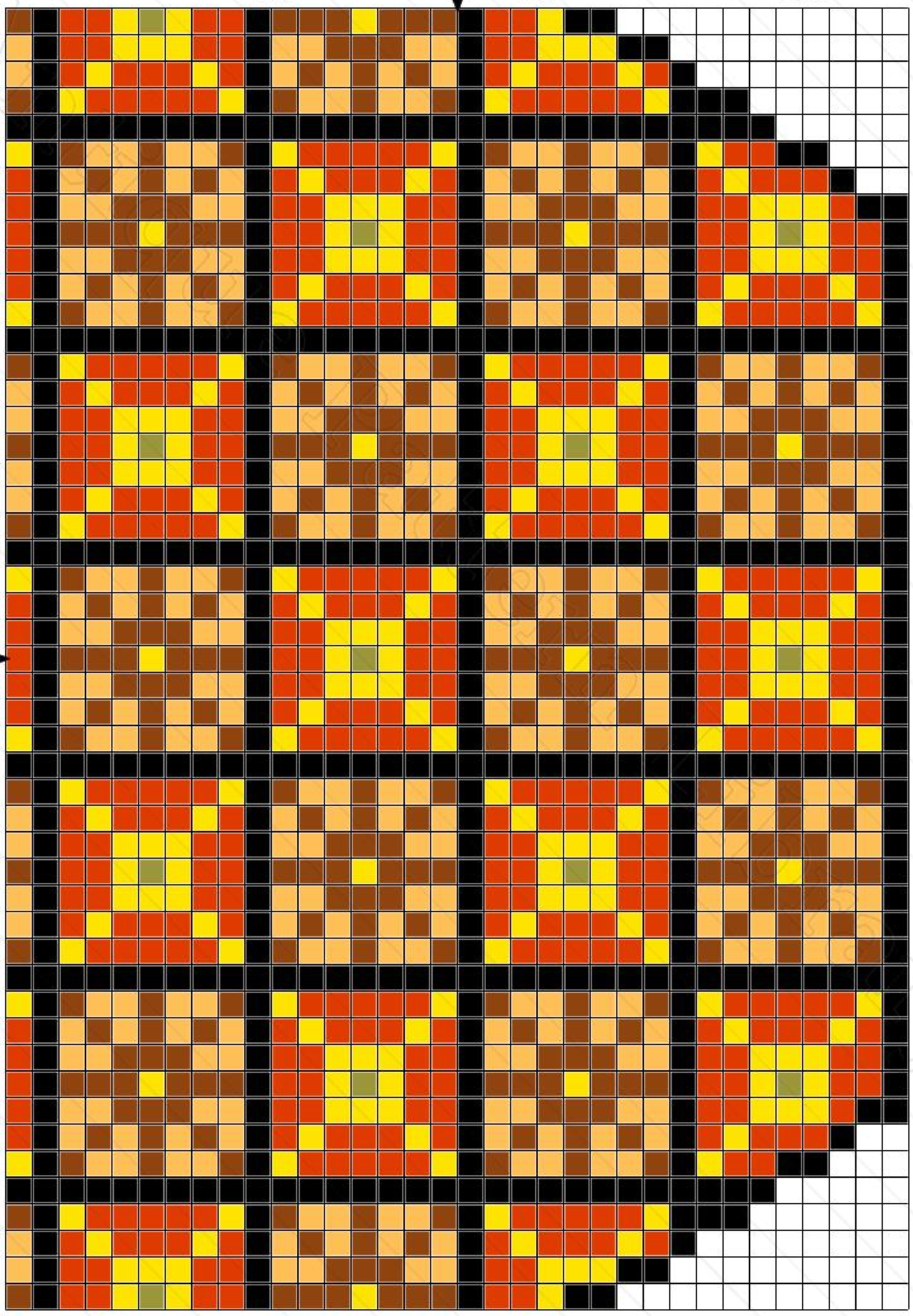
30

10

20

30

40



10

20

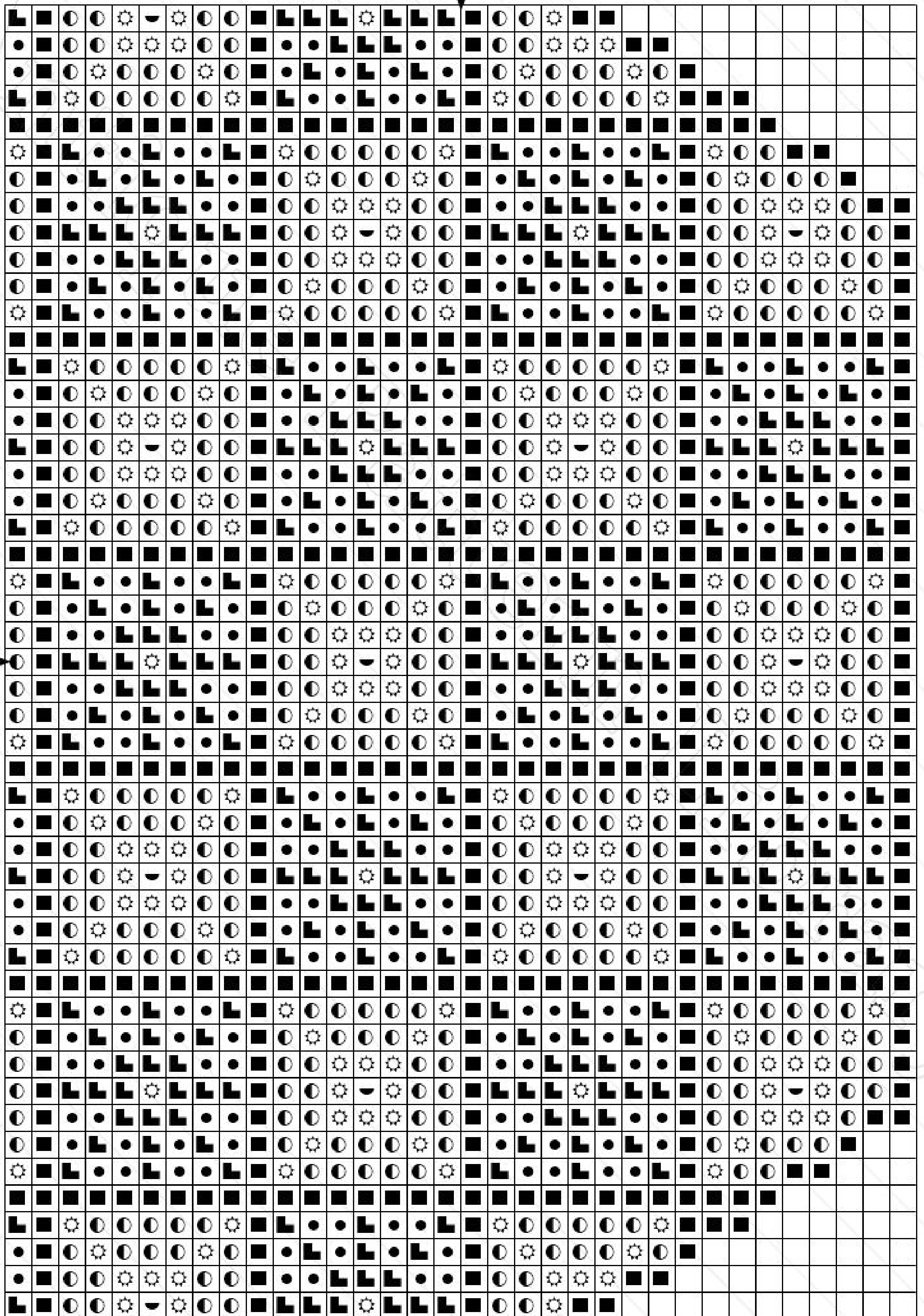
30

10

20

30

40



Title: B-SW050 Alexandre 337 Pattern 7
Author: Antique Pattern Library
Company: New Media Arts Inc.
Copyright: Creative Commons 4.0 NC SA BY
Free distribution only - NOT FOR SALE
Grid Size: 34W x 49H
Design Area: 2.43" x 3.50" (34 x 49 stitches)

Legend: Stitches

| | | |
|---|----------------|-------------------|
| ■ | DMC Cotton 310 | black |
| ⊙ | DMC Cotton 973 | canary - br |
| ● | DMC Cotton 742 | tangerine - lt |
| ◐ | DMC Cotton 900 | burnt orange - dk |
| ◑ | DMC Cotton 731 | olive green - dk |
| ◒ | DMC Cotton 400 | mahogany - dk |

10

20

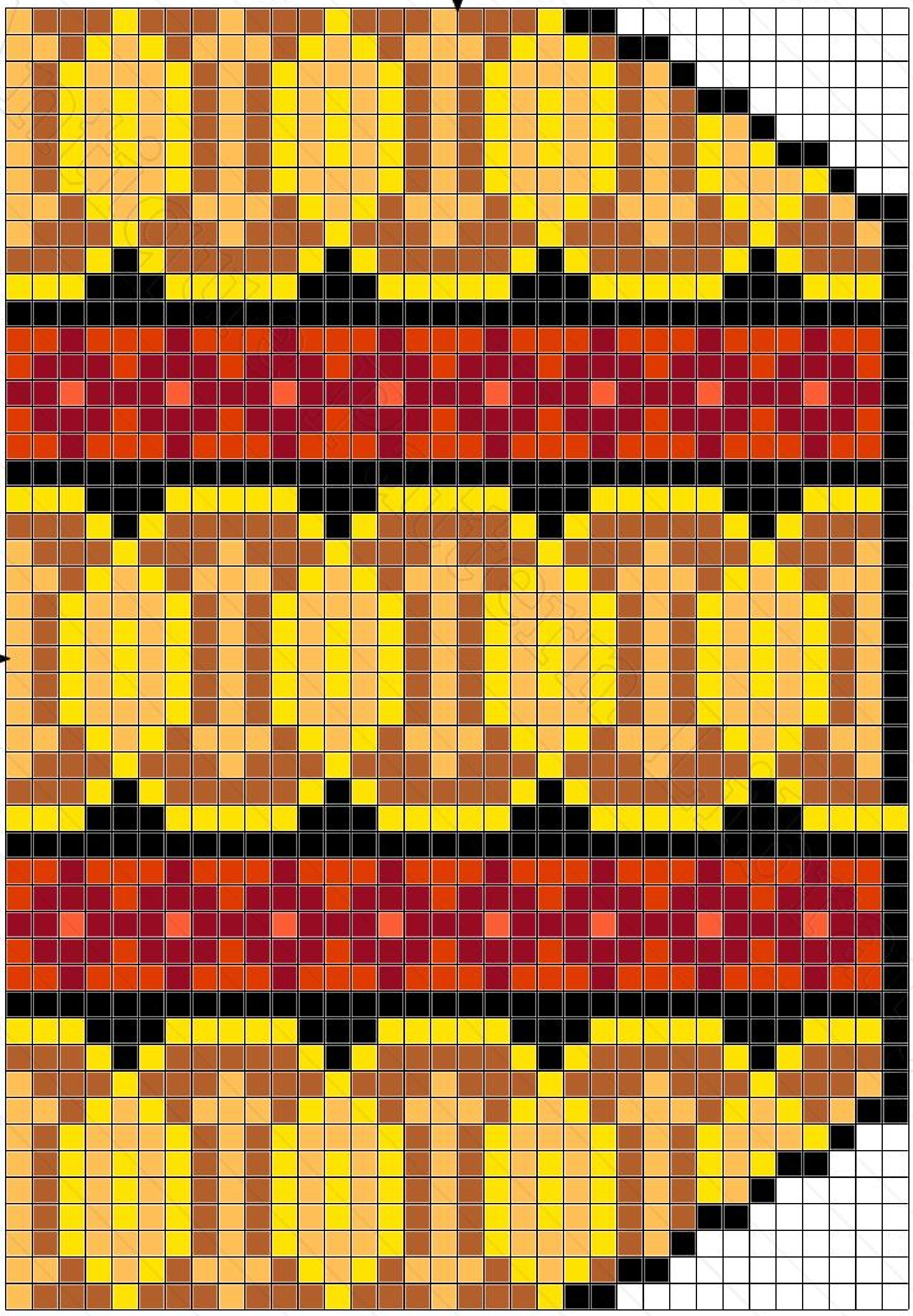
30

10

20

30

40



10

20

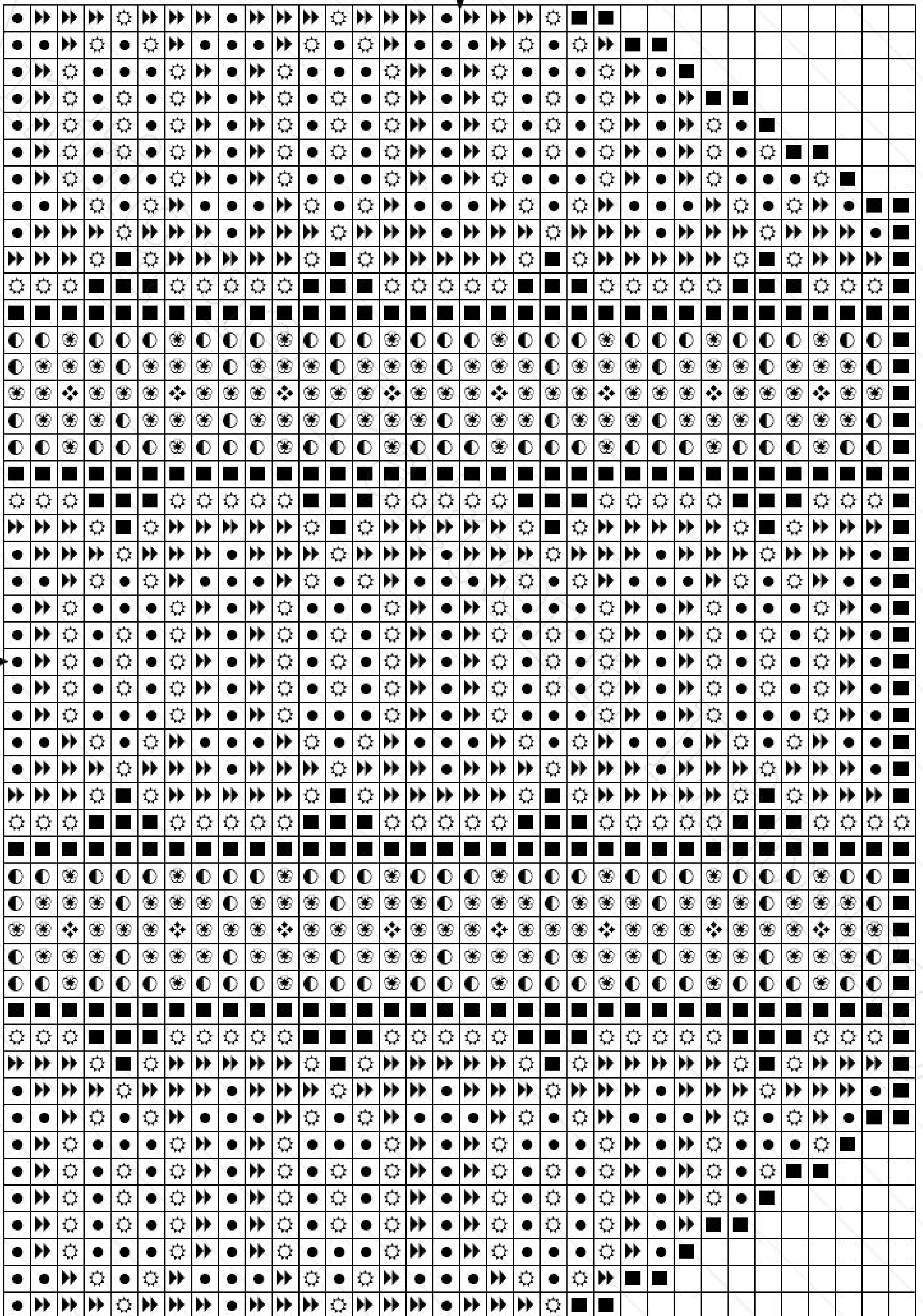
30

10

20

30

40



Title: B-SW050 Alexandre 337 Pattern 8
Author: Antique Pattern Library
Company: New Media Arts Inc.
Copyright: Creative Commons 4.0 NC SA BY
Free distribution only - NOT FOR SALE
Grid Size: 34W x 49H
Design Area: 2.43" x 3.50" (34 x 49 stitches)

Legend: Stitches

| | | |
|----|----------------|-------------------|
| ■ | DMC Cotton 310 | black |
| ☼ | DMC Cotton 973 | canary - br |
| ☼ | DMC Cotton 816 | garnet |
| ❖ | DMC Cotton 608 | bright orange |
| ● | DMC Cotton 742 | tangerine - lt |
| ◐ | DMC Cotton 900 | burnt orange - dk |
| ▶▶ | DMC Cotton 301 | mahogany - md |

10

20

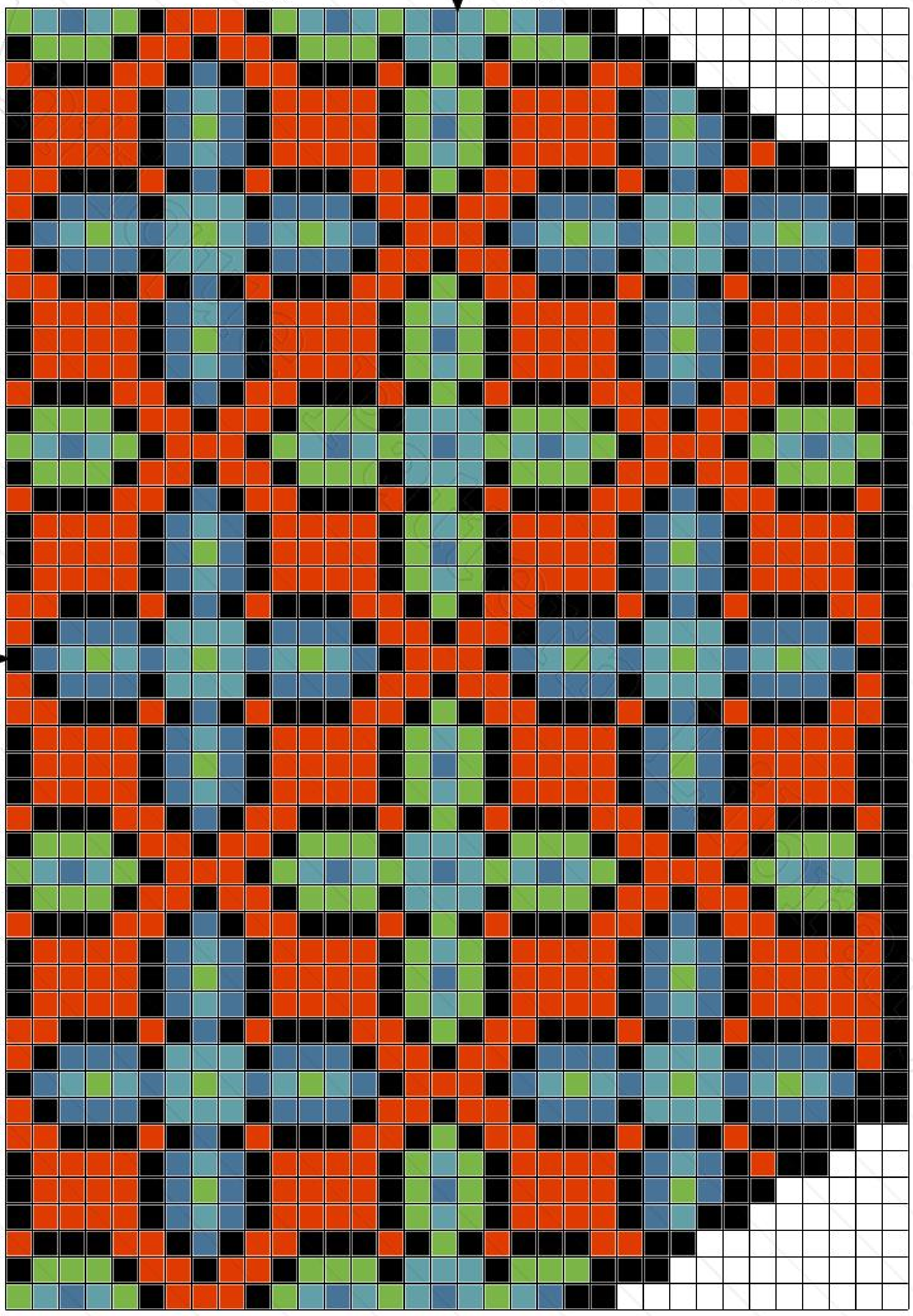
30

10

20

30

40



10

20

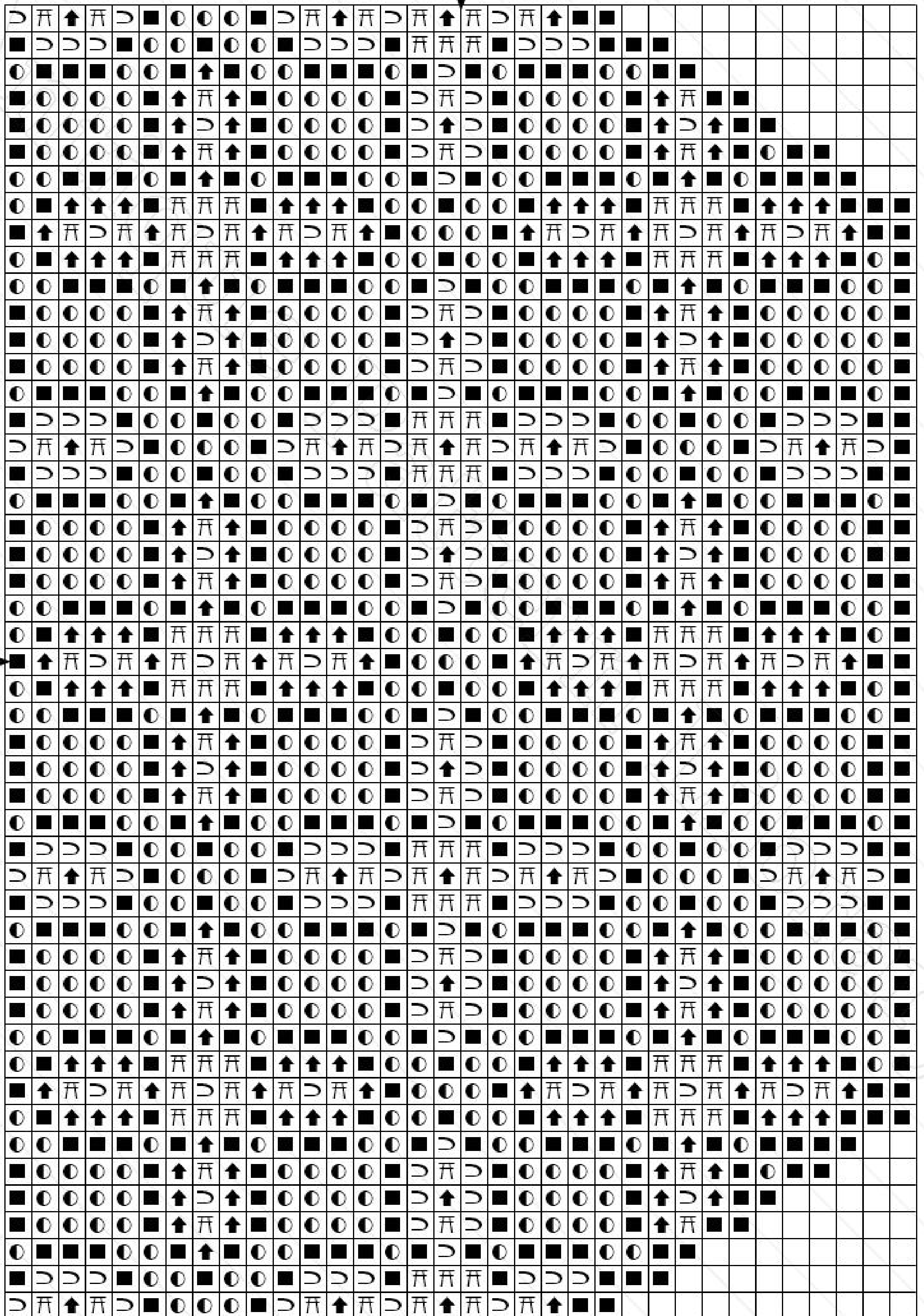
30

10

20

30

40



Title: B-SW050 Alexandre 337 Pattern 9
Author: Antique Pattern Library
Company: New Media Arts Inc.
Copyright: Creative Commons 4.0 NC SA BY
Free distribution only - NOT FOR SALE
Grid Size: 34W x 49H
Design Area: 2.43" x 3.50" (34 x 49 stitches)

Legend: Stitches

| | | |
|---|----------------|-------------------|
| ■ | DMC Cotton 310 | black |
| ↑ | DMC Cotton 322 | baby blue - dk |
| ⌘ | DMC Cotton 807 | peacock blue |
| ● | DMC Cotton 900 | burnt orange - dk |
| ▷ | DMC Cotton 703 | chartreuse |

10

20

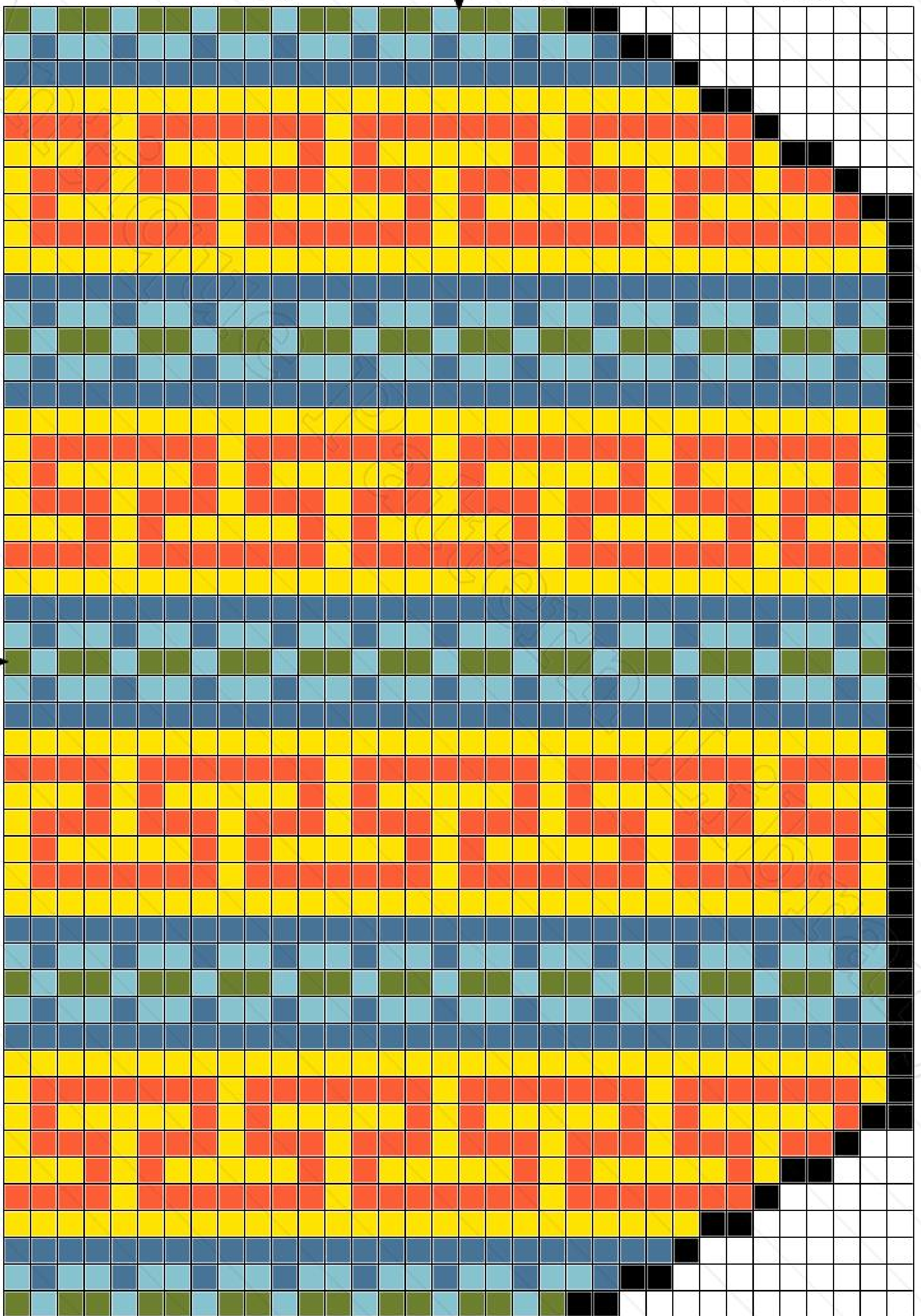
30

10

20

30

40



10

20

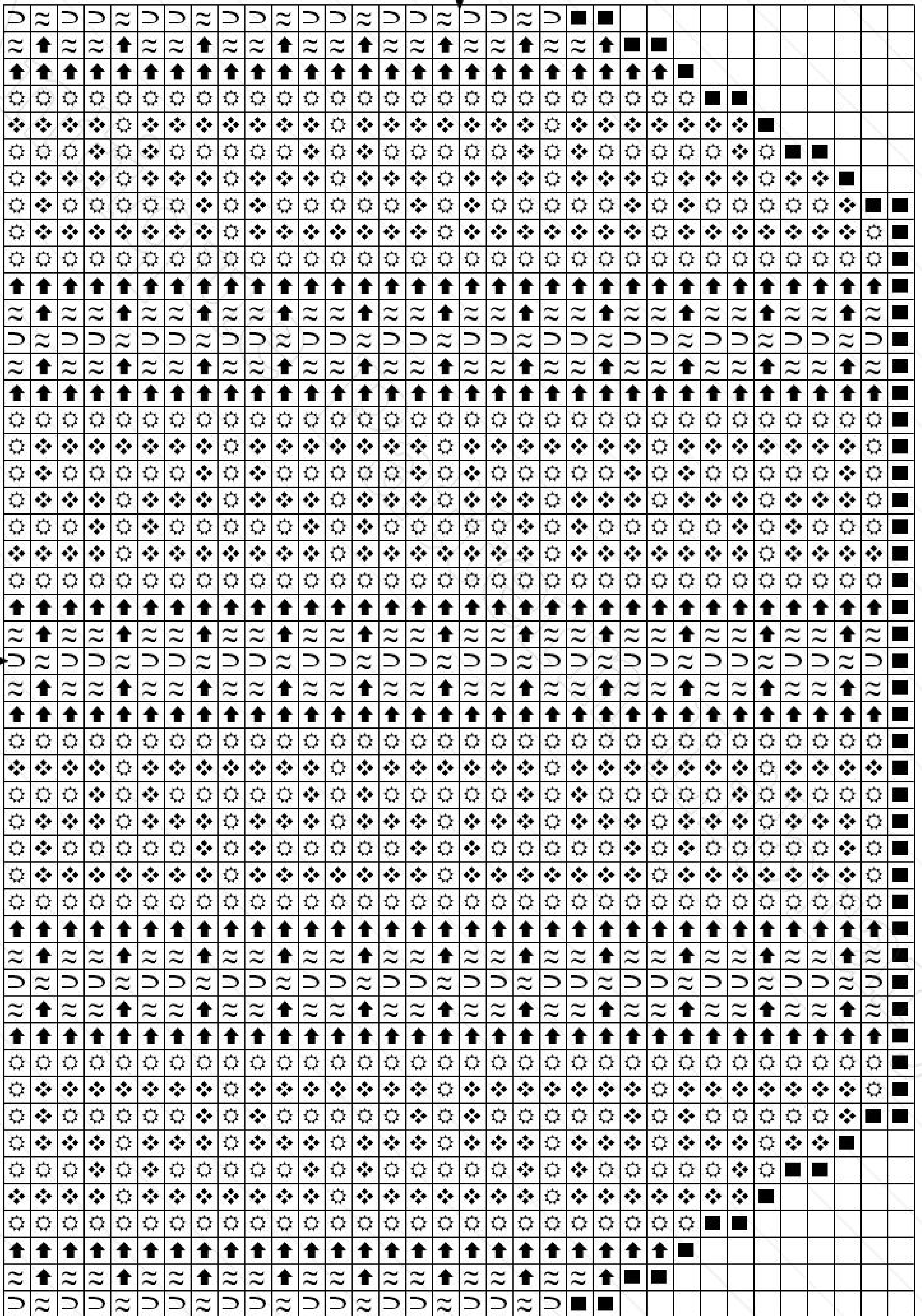
30

10

20

30

40



Title: B-SW050 Alexandre 337 Pattern 10
Author: Antique Pattern Library
Company: New Media Arts Inc.
Copyright: Creative Commons 4.0 NC SA BY
Free distribution only - NOT FOR SALE
Grid Size: 34W x 49H
Design Area: 2.43" x 3.50" (34 x 49 stitches)

Legend: Stitches

| | | |
|---|----------------|--------------------|
| ■ | DMC Cotton 310 | black |
| ⊗ | DMC Cotton 973 | canary - br |
| ⊛ | DMC Cotton 608 | bright orange |
| ↑ | DMC Cotton 322 | baby blue - dk |
| ≈ | DMC Cotton 598 | turquoise - lt |
| ∩ | DMC Cotton 937 | avocado green - md |

GRAND CHOIX
de dessins pour Soutaches.

GRAND ASSORTIMENT
de Robes d'enfants
DESSINÉES,

Tabliers, Brassières,

Bavoirs, Capelines

ETC