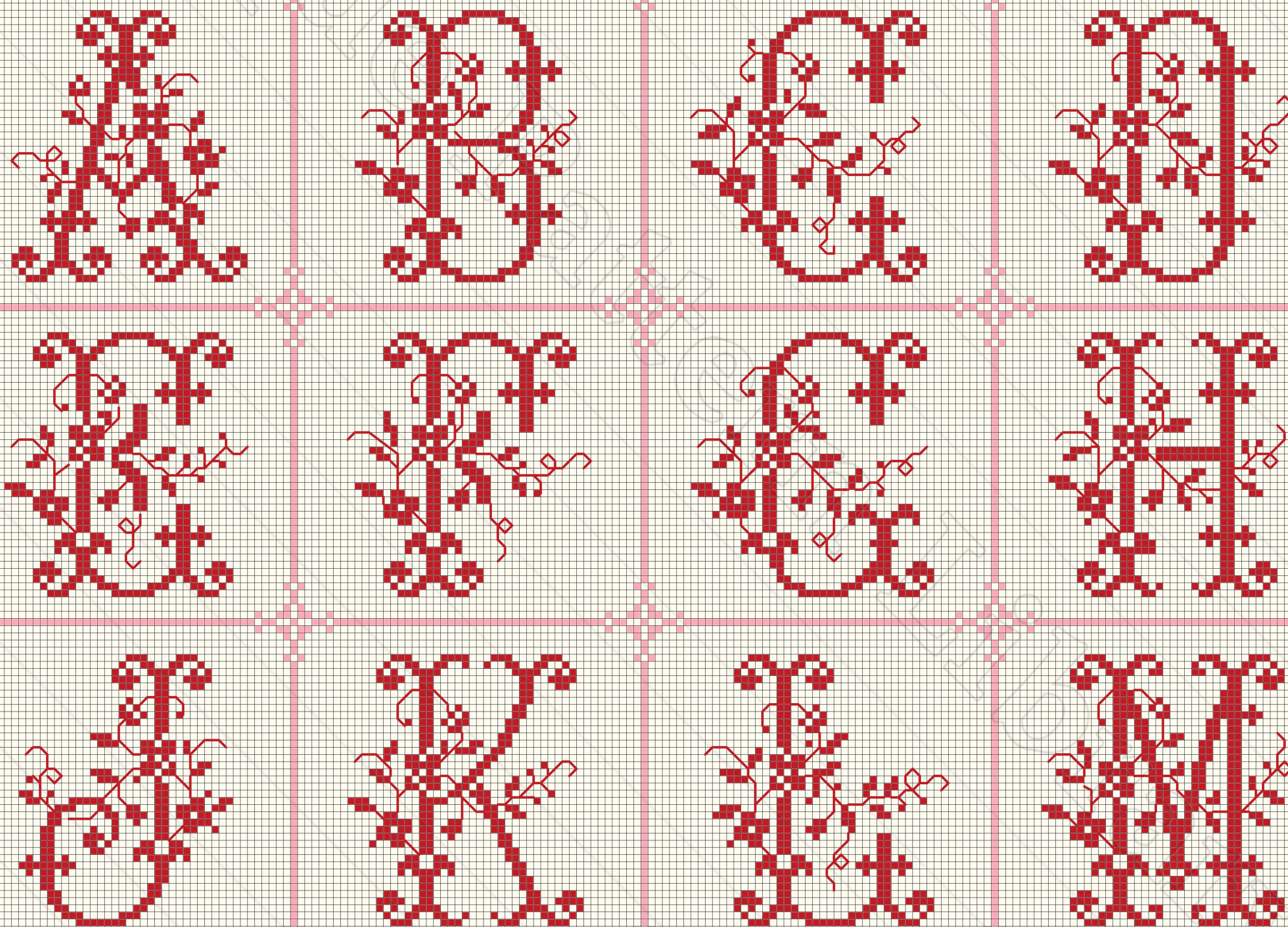
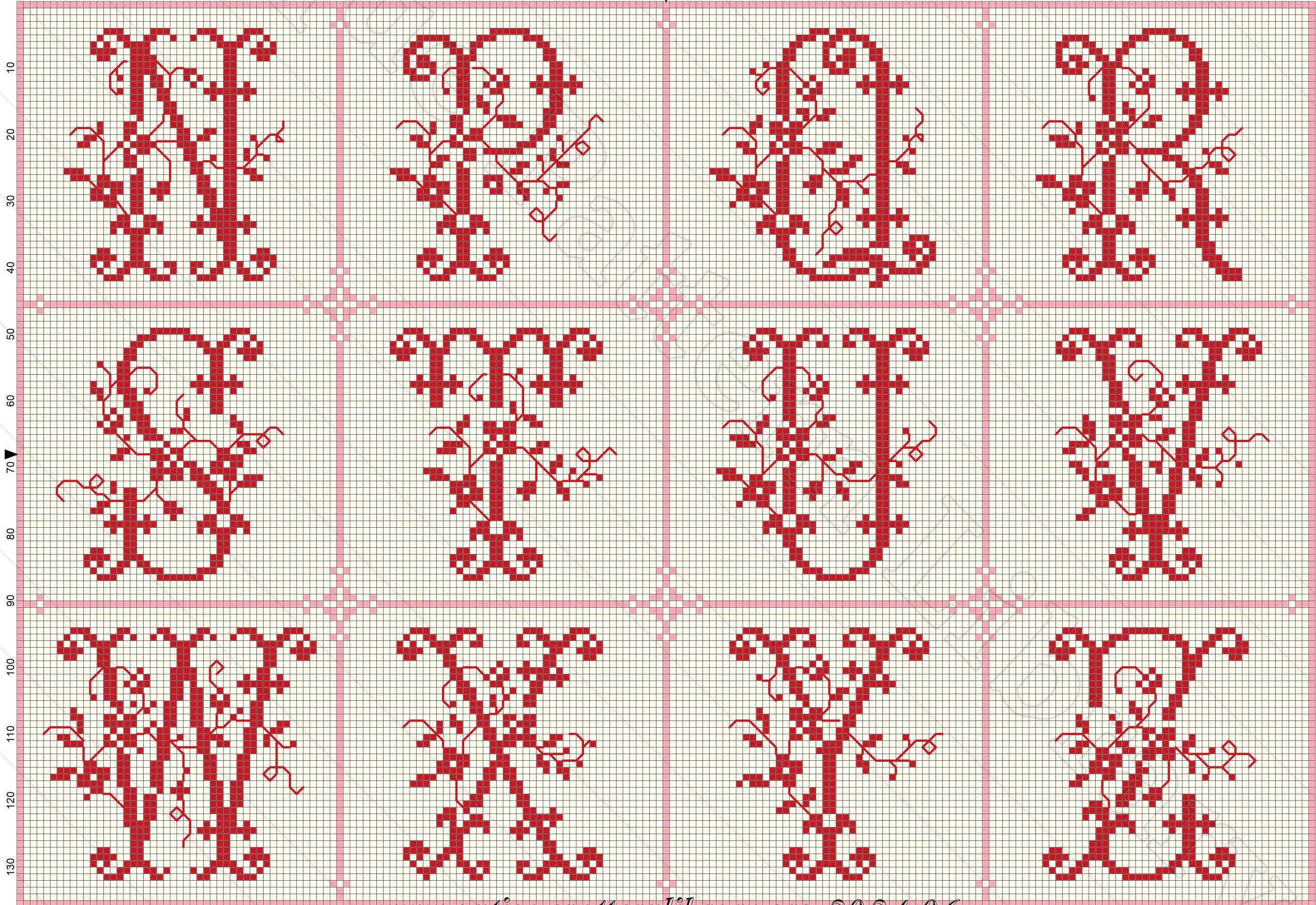


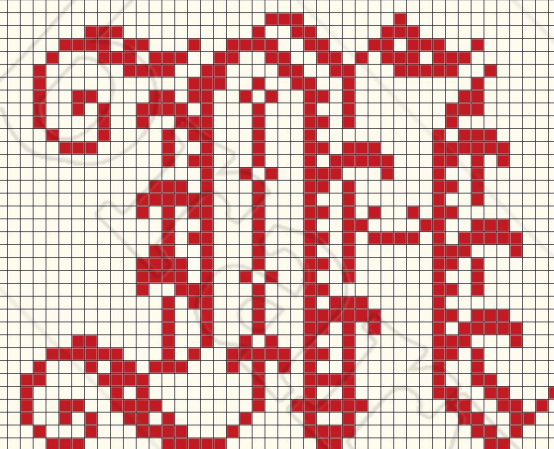
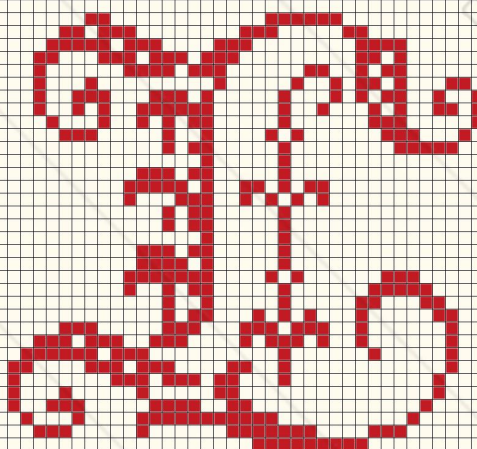
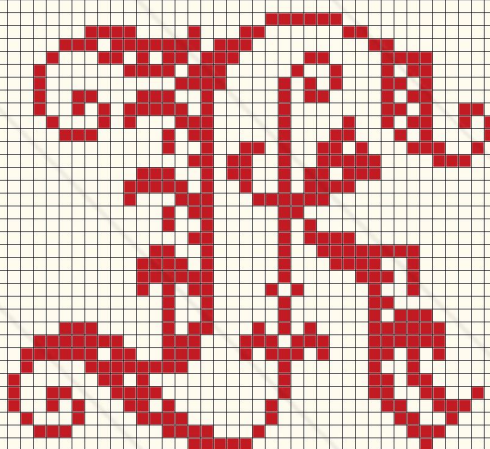
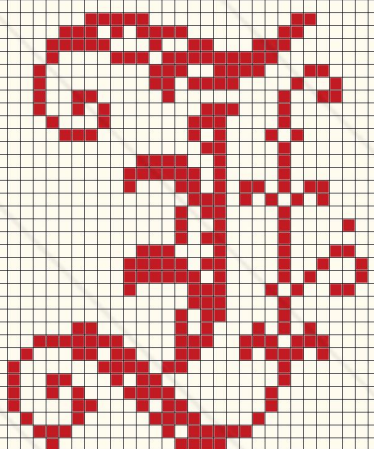
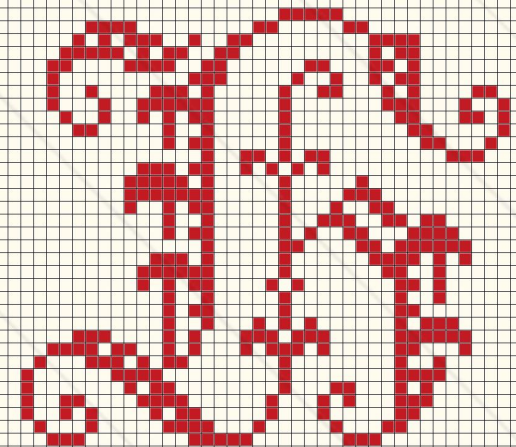
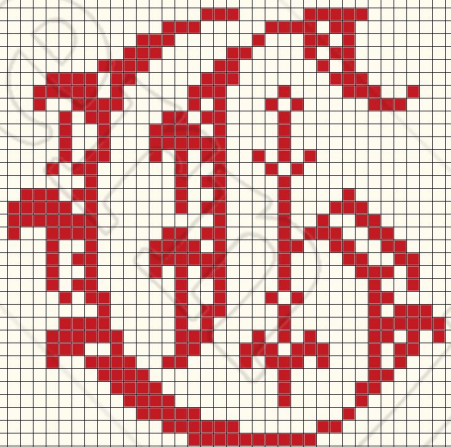
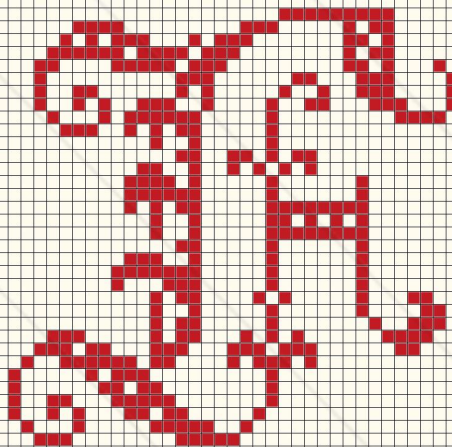
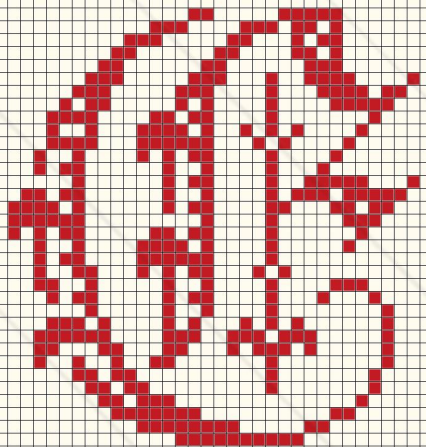
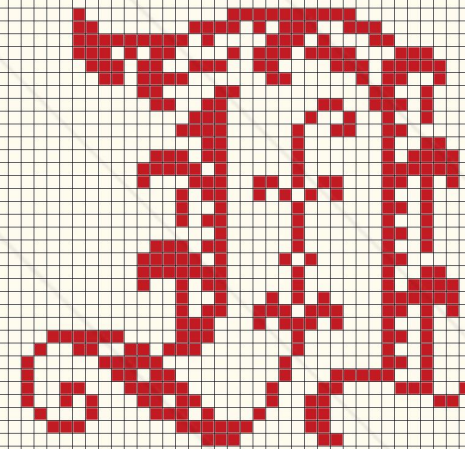
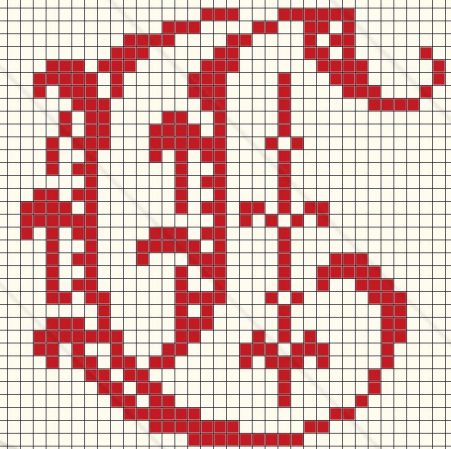
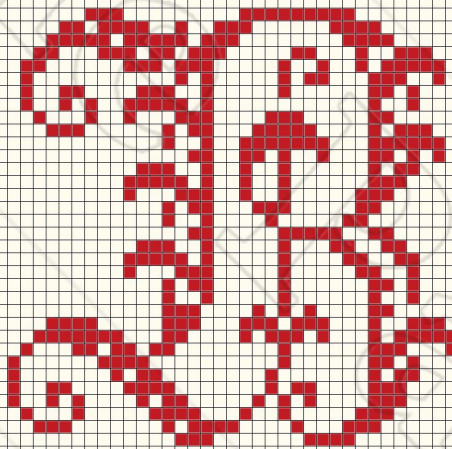
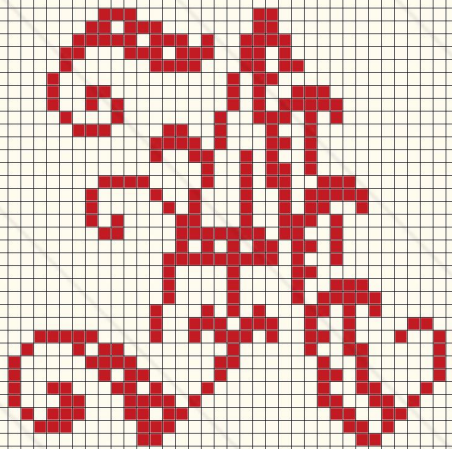


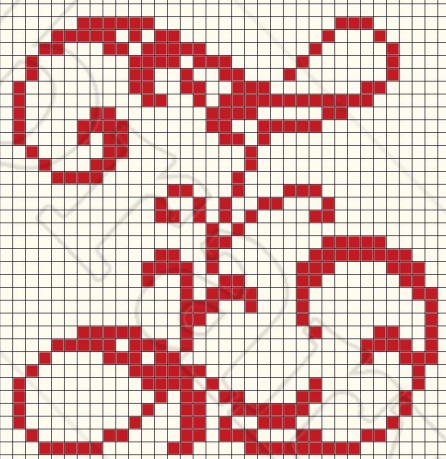
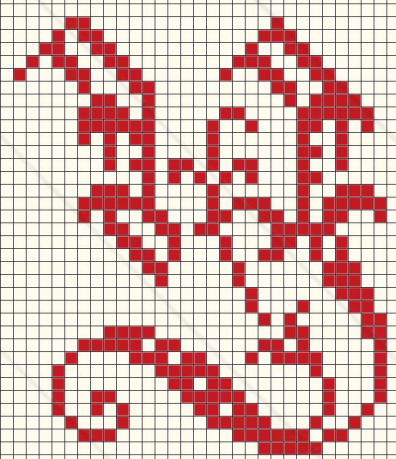
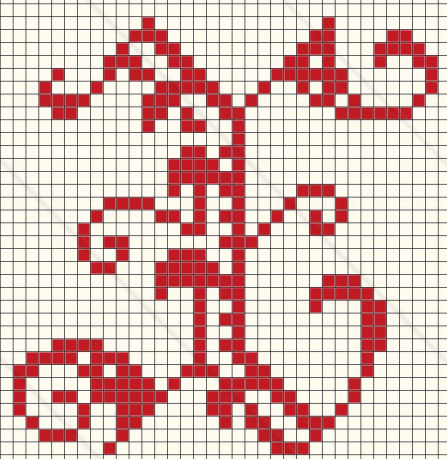
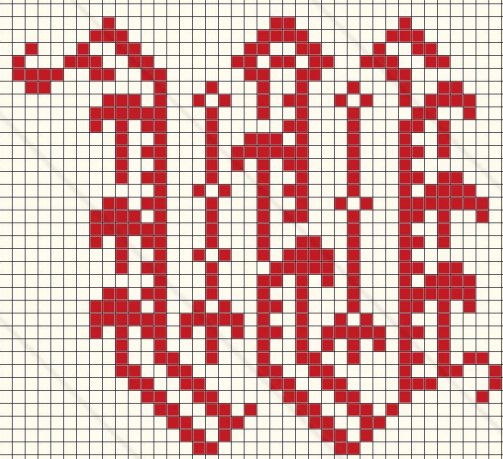
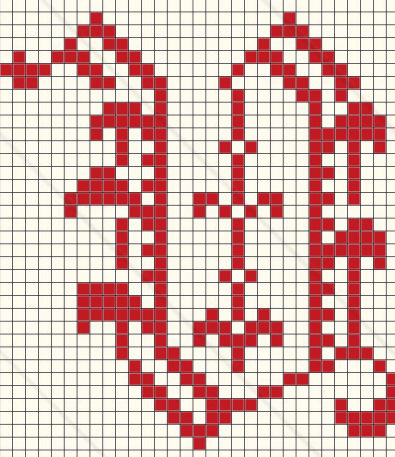
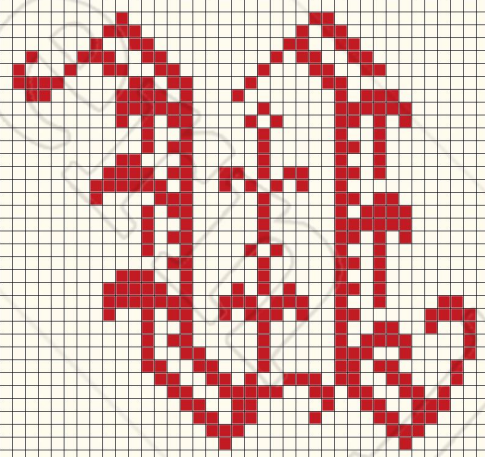
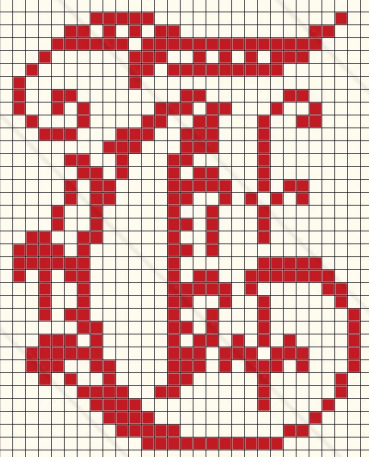
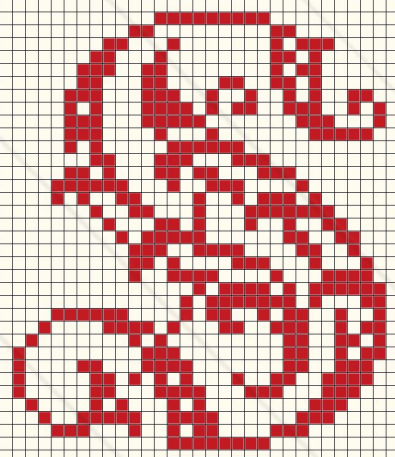
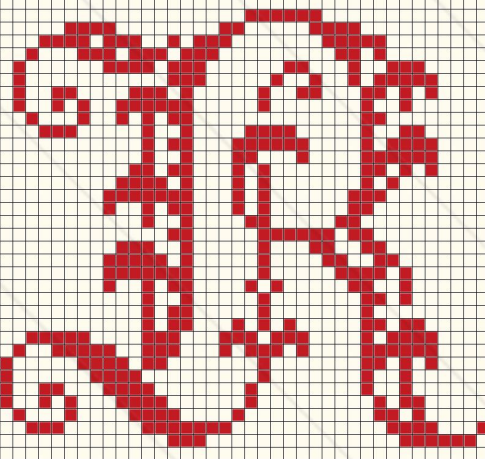
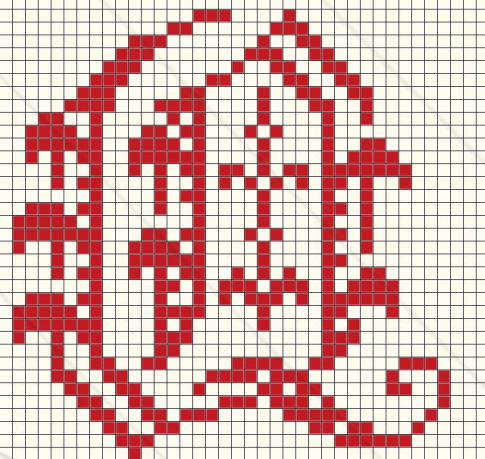
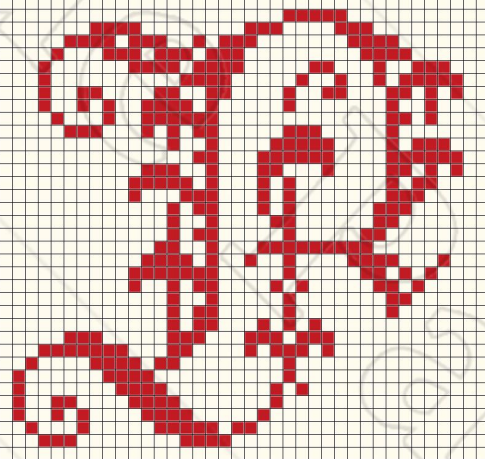
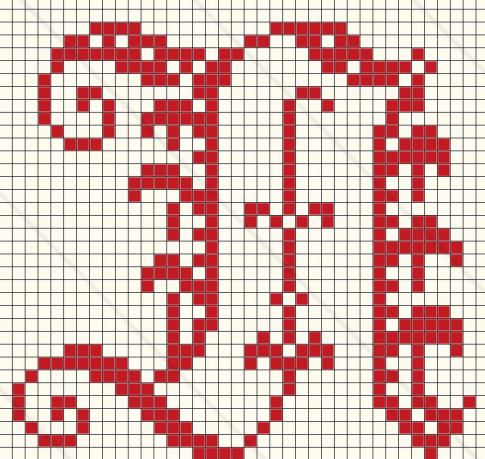
COMMISSION **ALPHABETS** EXPORTATION
VARIÉS
N. ALEXANDRE & C^{IE}
MAURICE LAJEUNESSE Succ.^P
ÉDITEUR, DESSINATEUR.
241 Rue S^t Martin, 241
PARIS

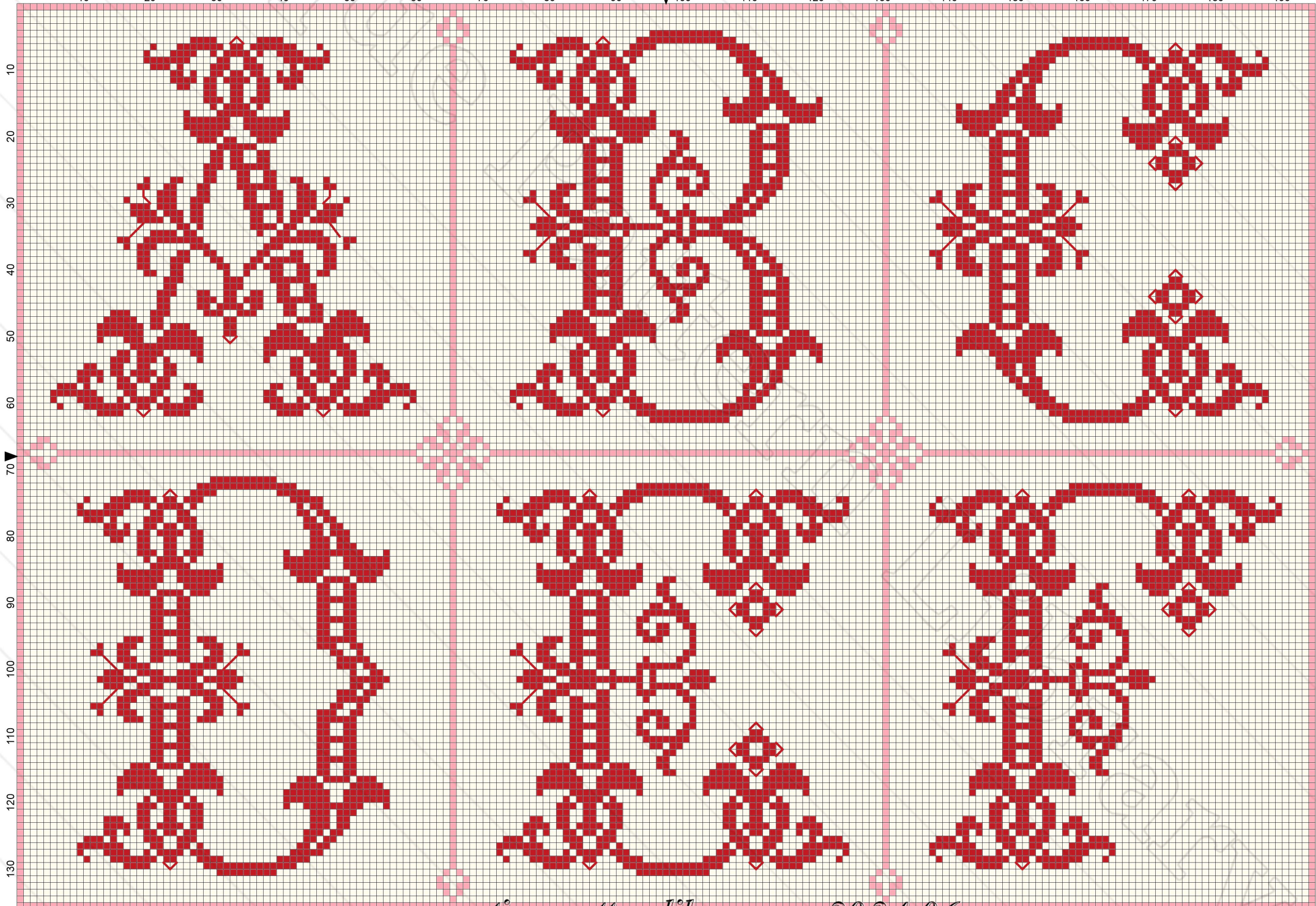


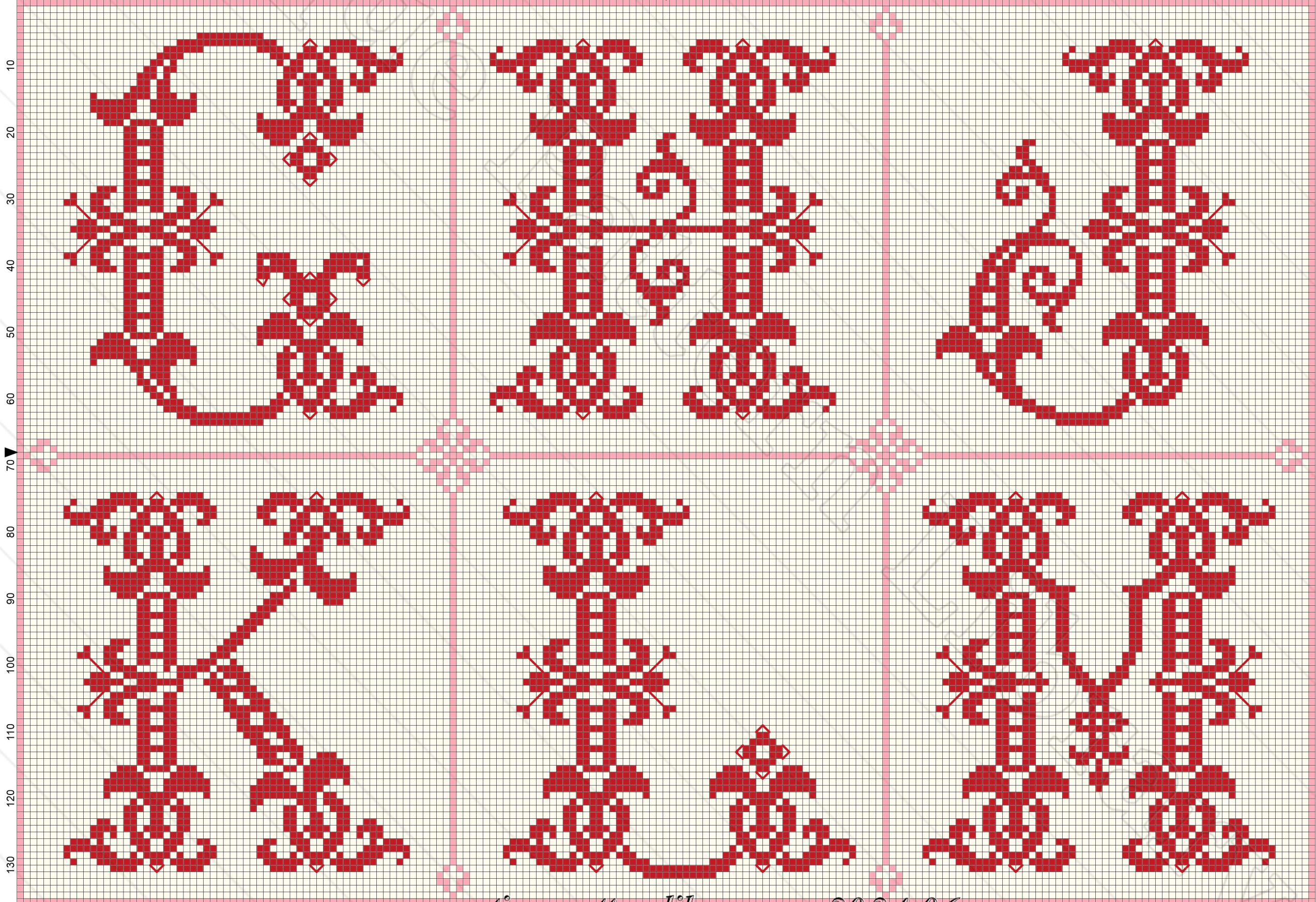


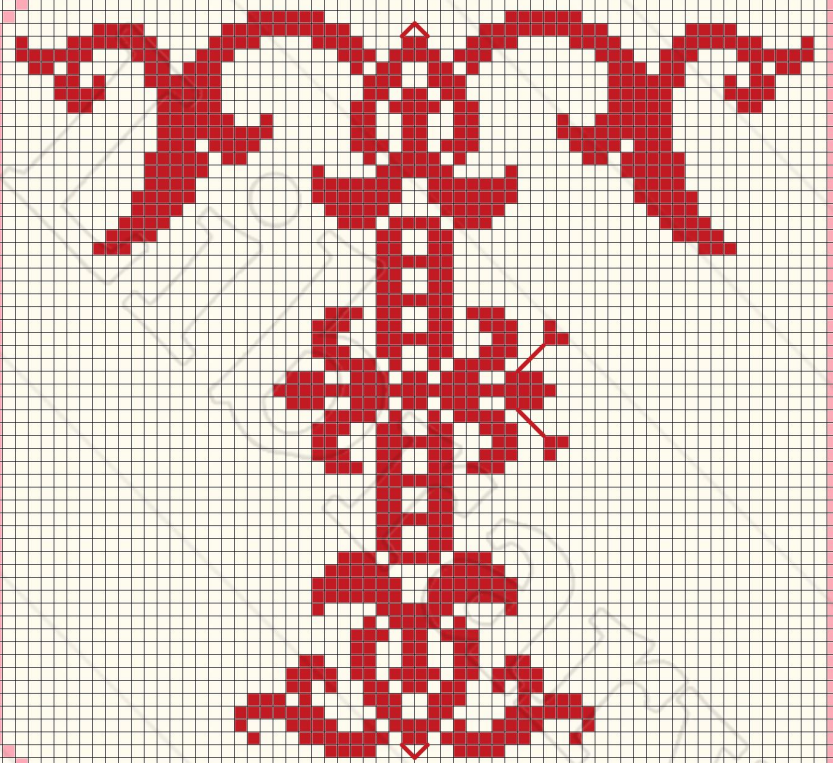
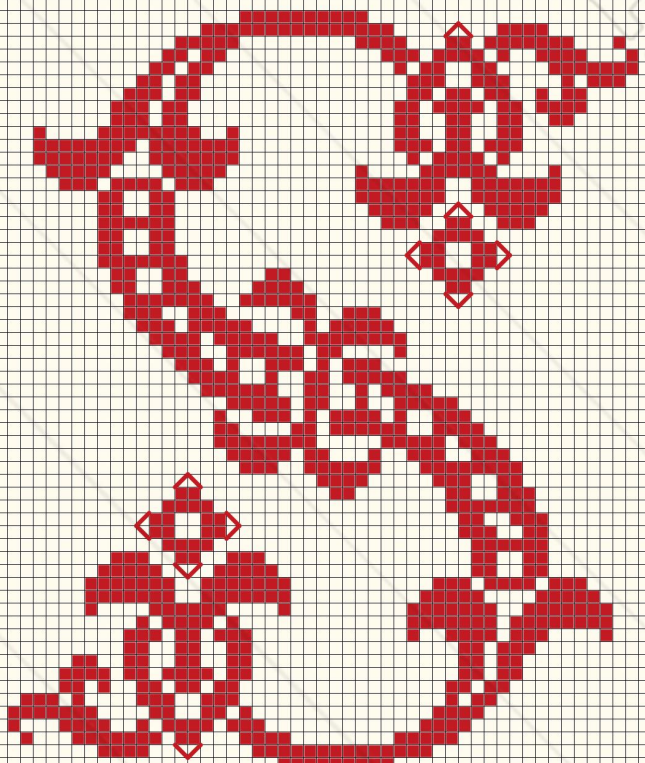
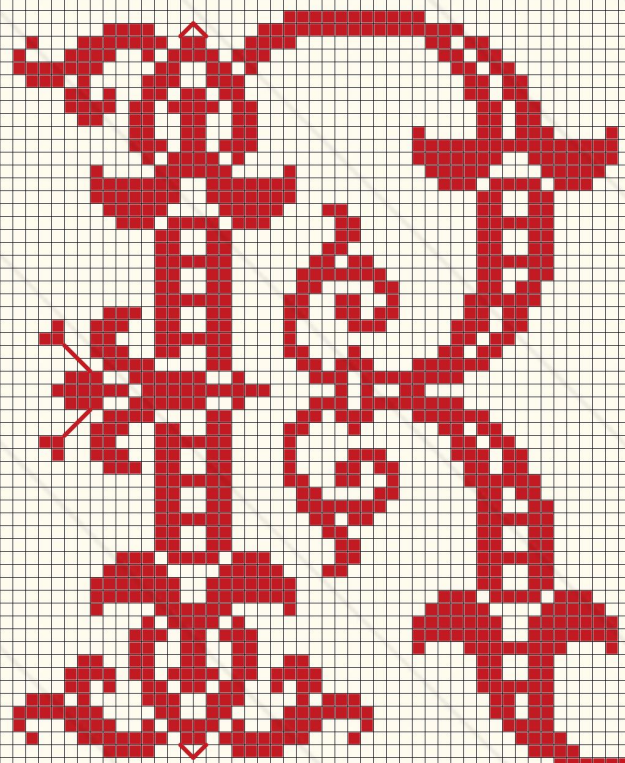
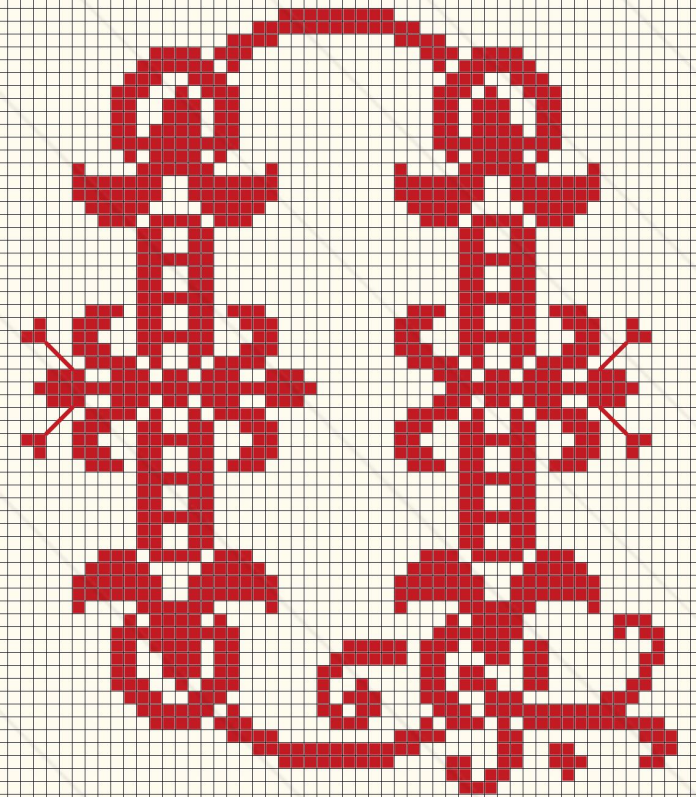
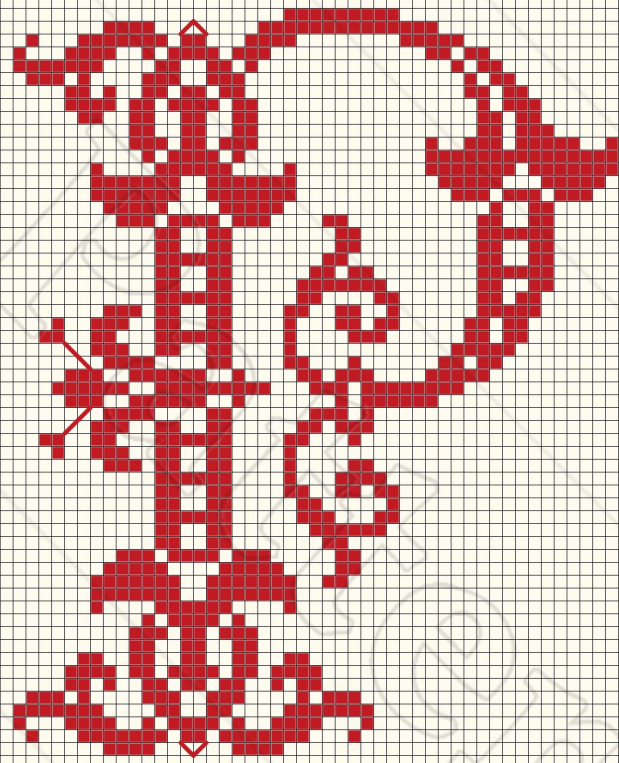
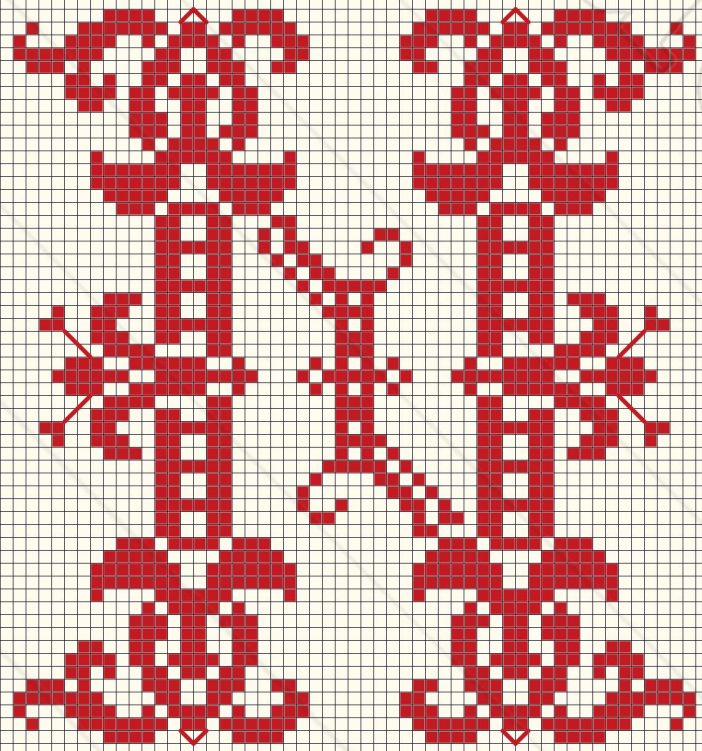
10
20
30
40
50
60
70
80
90
100
110
120
130

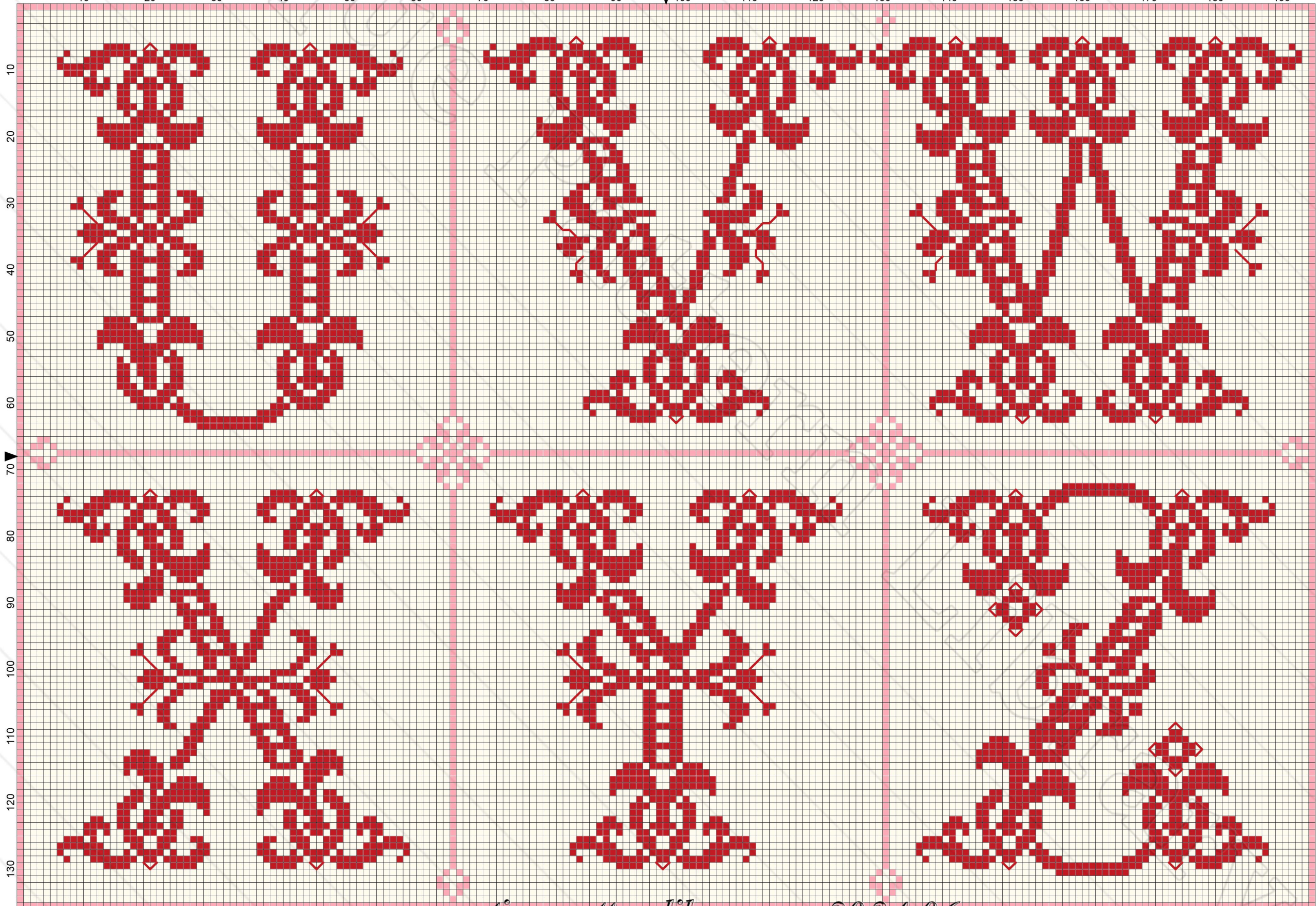














DESSINS

SOUTACHES,



LACETS.

BRODERIES

sur tissus en tous genres

ARTICLES ÉCHANTILLONNES

MIGNARDISES

DEPOSE.