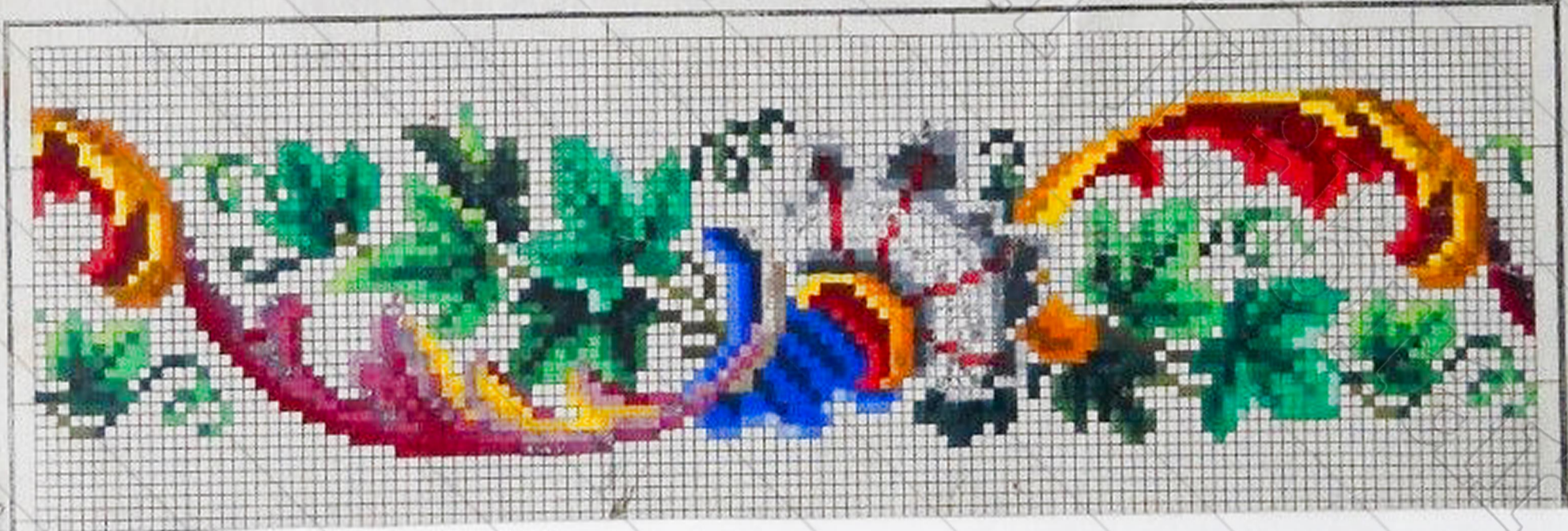


3676



*Snechtel & Co Berlin.*

706.



30

25

19



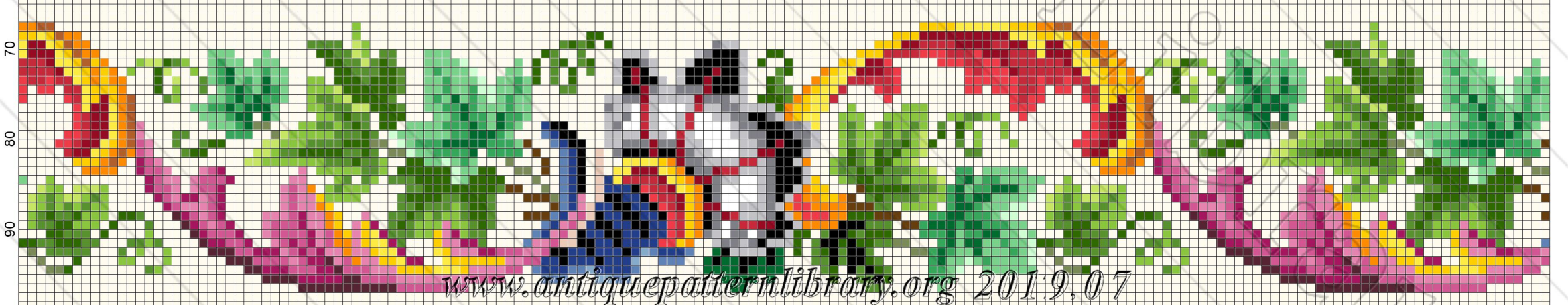
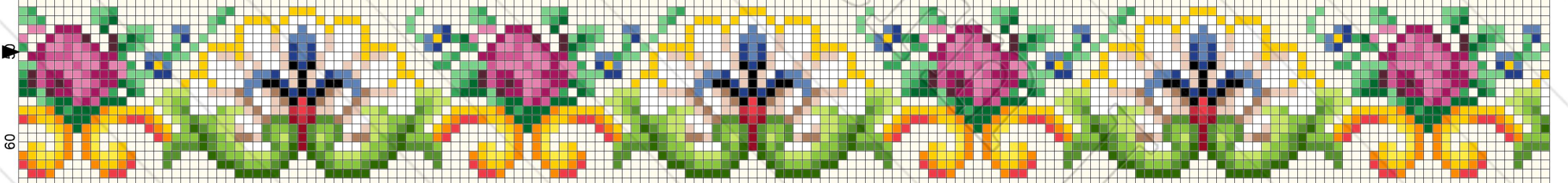
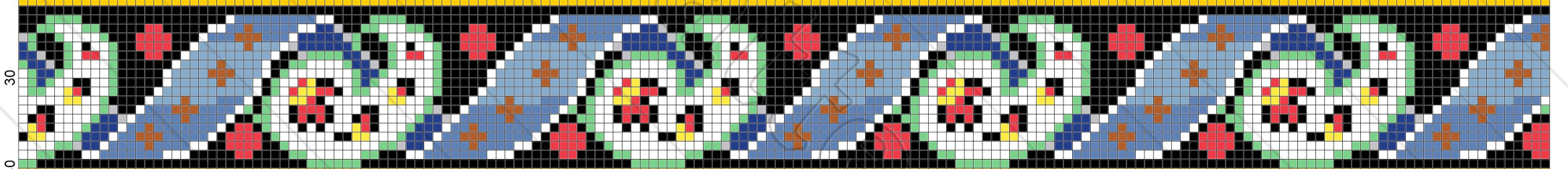
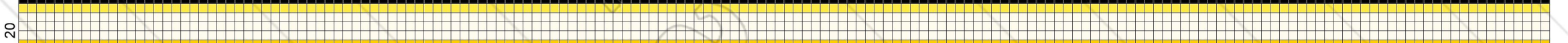
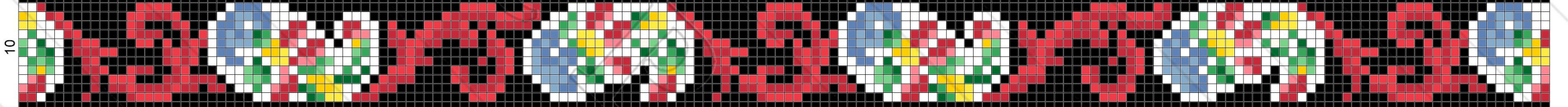
13

*Hutz & Wegener in Berlin*

2.

10 20 30 40 50 60 70 80 90 100 110 120 130 140 150 160 170

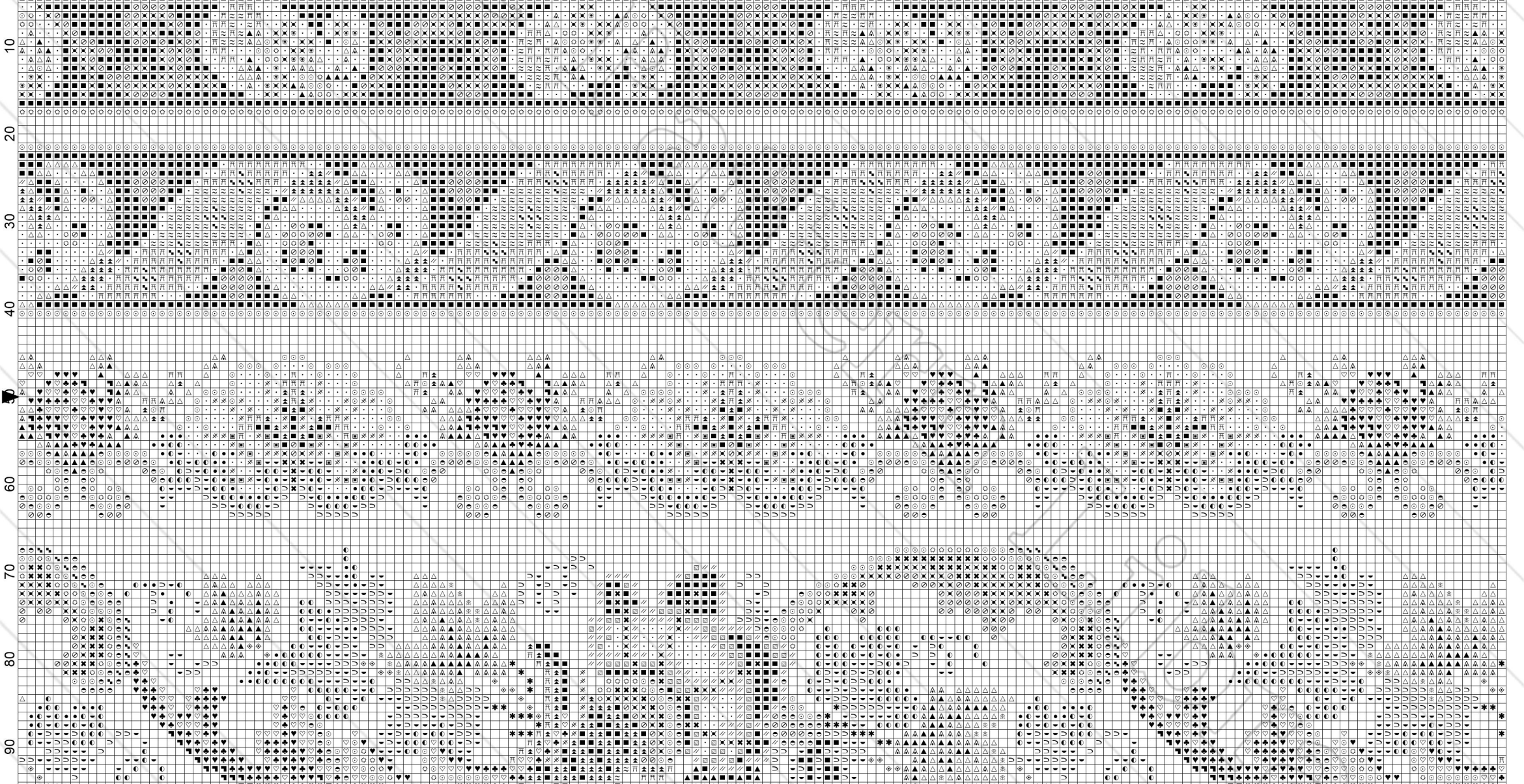
*Creative Commons 4.0 NC SA BY FREE DISTRIBUTION ONLY - NOT FOR SALE*



*www.antiquepatternlibrary.org 2019.07*

100

Creative Commons 4.0 NC SA BY FREE DISTRIBUTION ONLY - NOT FOR SALE



**Name:** E-CR011 Four border designs from various publishers.  
**Author:** Antique Pattern Library  
**Company:** New Media Arts, Inc.  
**Copyright:** Creative Commons 4.0 NC SA BY  
Free distribution only -NOT FOR SALE  
**Grid Size:** 170W x 100H  
**Design Area:** 12,14" x 7,14" (170 x 100 stitches)

**Legend: Stitches**

■	DMC Cotton 310	black
•	DMC Cotton White	white
☼	DMC Cotton 307	lemon
△	DMC Cotton 913	nile green - md
▲	DMC Cotton 3818	emerald green - ul vy dk
■	DMC Cotton 301	mahogany - md
▲	DMC Cotton 797	royal blue
✕	DMC Cotton 321	christmas red
△	DMC Cotton 911	emerald green - md
○	DMC Cotton 3801	christmas red - lt
≈	DMC Cotton 809	delft blue
卍	DMC Cotton 799	delft blue - md
//	DMC Cotton 415	pearl gray
☼	DMC Cotton 3706	melon - md
○	DMC Cotton 444	lemon - dk
●	DMC Cotton 907	parrot green - lt
◐	DMC Cotton 906	parrot green - md
◑	DMC Cotton 905	parrot green - dk
∩	DMC Cotton 904	parrot green - vy dk
✕	DMC Cotton 816	garnet
✕	DMC Cotton 950	desert sand - lt
▣	DMC Cotton 3772	desert sand - vy dk
♡	DMC Cotton 3608	plum - vy lt
♣	DMC Cotton 3607	plum - lt
♥	DMC Cotton 917	plum - md
⌚	DMC Cotton 154	grape - vy lt
◐	DMC Cotton 740	tangerine
▨	DMC Cotton 414	steel gray - dk
⌚	DMC Cotton 955	nile green - lt
✱	DMC Cotton 801	coffee brown - dk
◇	DMC Cotton 3052	green gray - md
•	DMC Cotton 712	cream