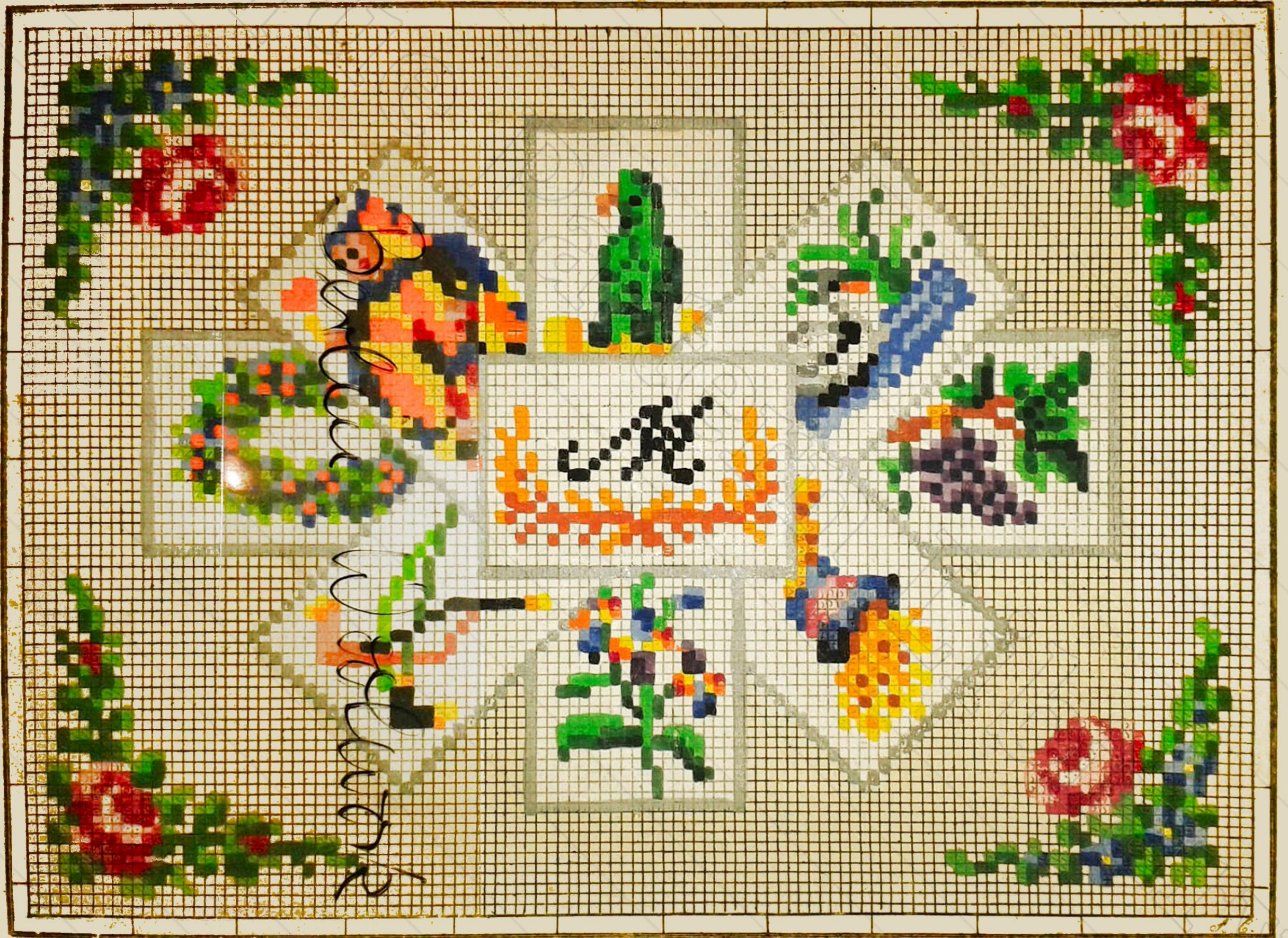
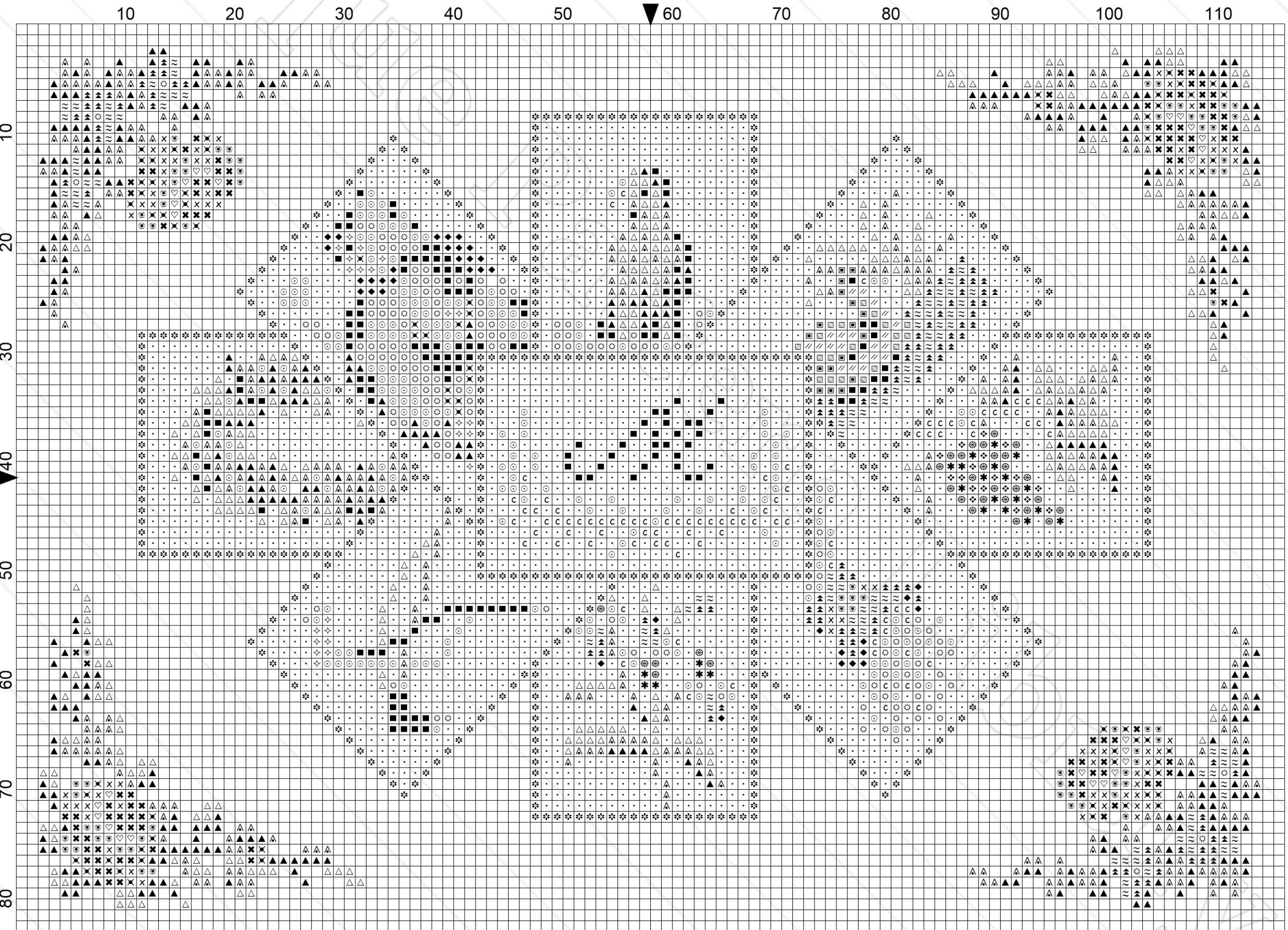


No. 672



Wien bey J. Neumann am Graben zur goldenen Krone





Title: F-GE001 Bermann 632
Author: Antique Pattern Library
Company: New Media Arts Inc.
Copyright: Creative Commons 4.0 NC SA BY
Free distribution only - NOT FOR SALE
Grid Size: 116W x 83H
Design Area: 8.29" x 5.93" (116 x 83 stitches)

Legend: Stitches

■	DMC Cotton 310	black
•	DMC Cotton White	white
☼	DMC Cotton 307	lemon
△	DMC Cotton 320	pistachio green - md
✕	DMC Cotton 816	garnet
▲	DMC Cotton 699	christmas green
◆	DMC Cotton 796	royal blue - dk
✿	DMC Cotton 3045	yellow beige - dk
⊙	DMC Cotton 3340	apricot - md
✧	DMC Cotton 3778	terra cotta - lt
✕	DMC Cotton 321	christmas red
△	DMC Cotton 367	pistachio green - dk
▲	DMC Cotton 798	delft blue - dk
≈	DMC Cotton 809	delft blue
c	DMC Cotton 920	copper - md
✿	DMC Cotton 3706	melon - md
♥	DMC Cotton 963	dusty rose - ul vy lt
x	DMC Cotton 3801	christmas red - lt
⊗	DMC Cotton 553	violet
✿	DMC Cotton 327	violet - dk
❖	DMC Cotton 3836	grape - lt
//	DMC Cotton 648	beaver gray - lt
▨	DMC Cotton 647	beaver gray - md
▣	DMC Cotton 646	beaver gray - dk
•	DMC Cotton 3770	tawny - vy lt