



10

20

30

▼ 40

50

60

70

10

20

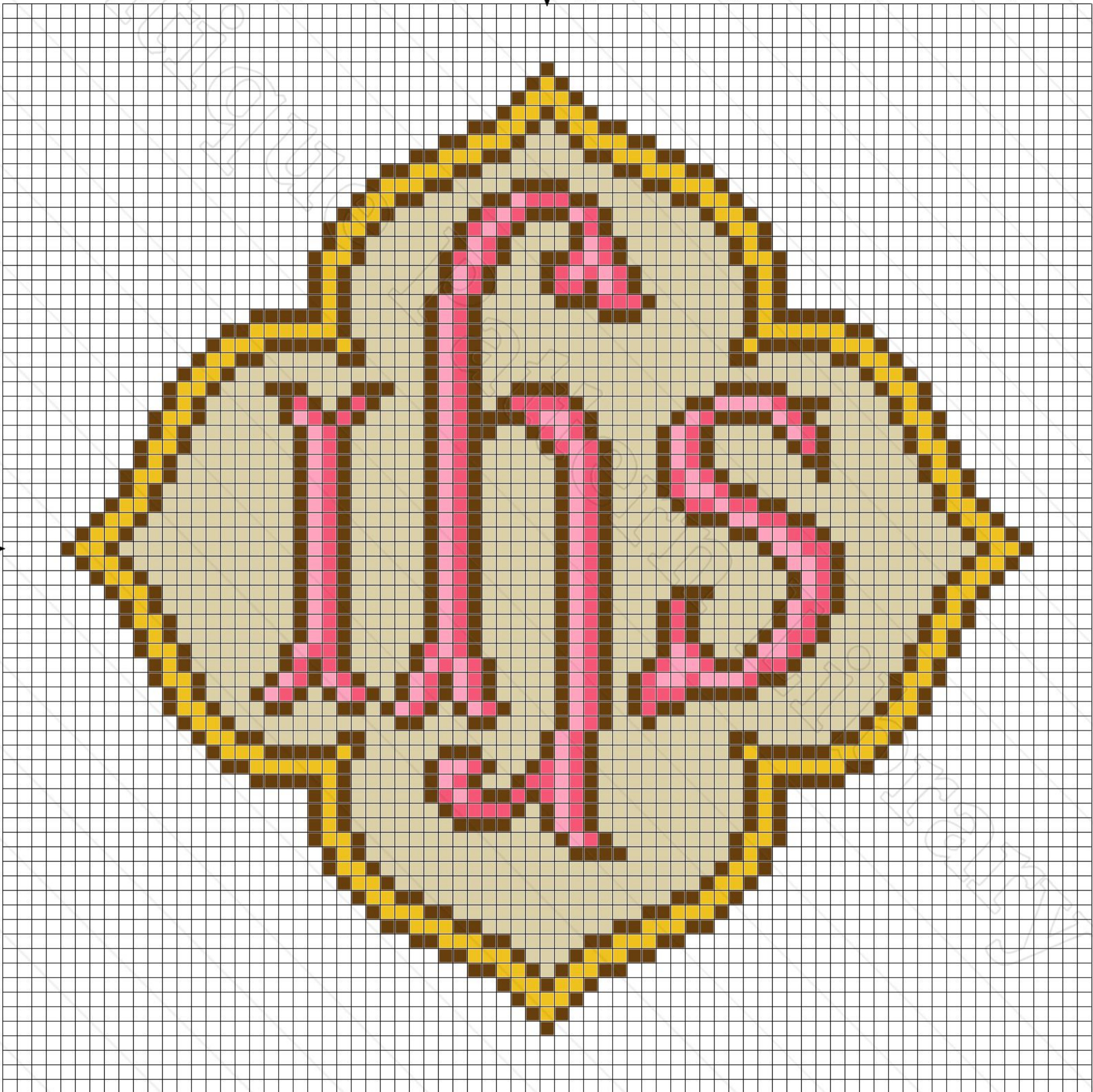
30

▼ 40

50

60

70



10

20

30

40

50

60

70

10

20

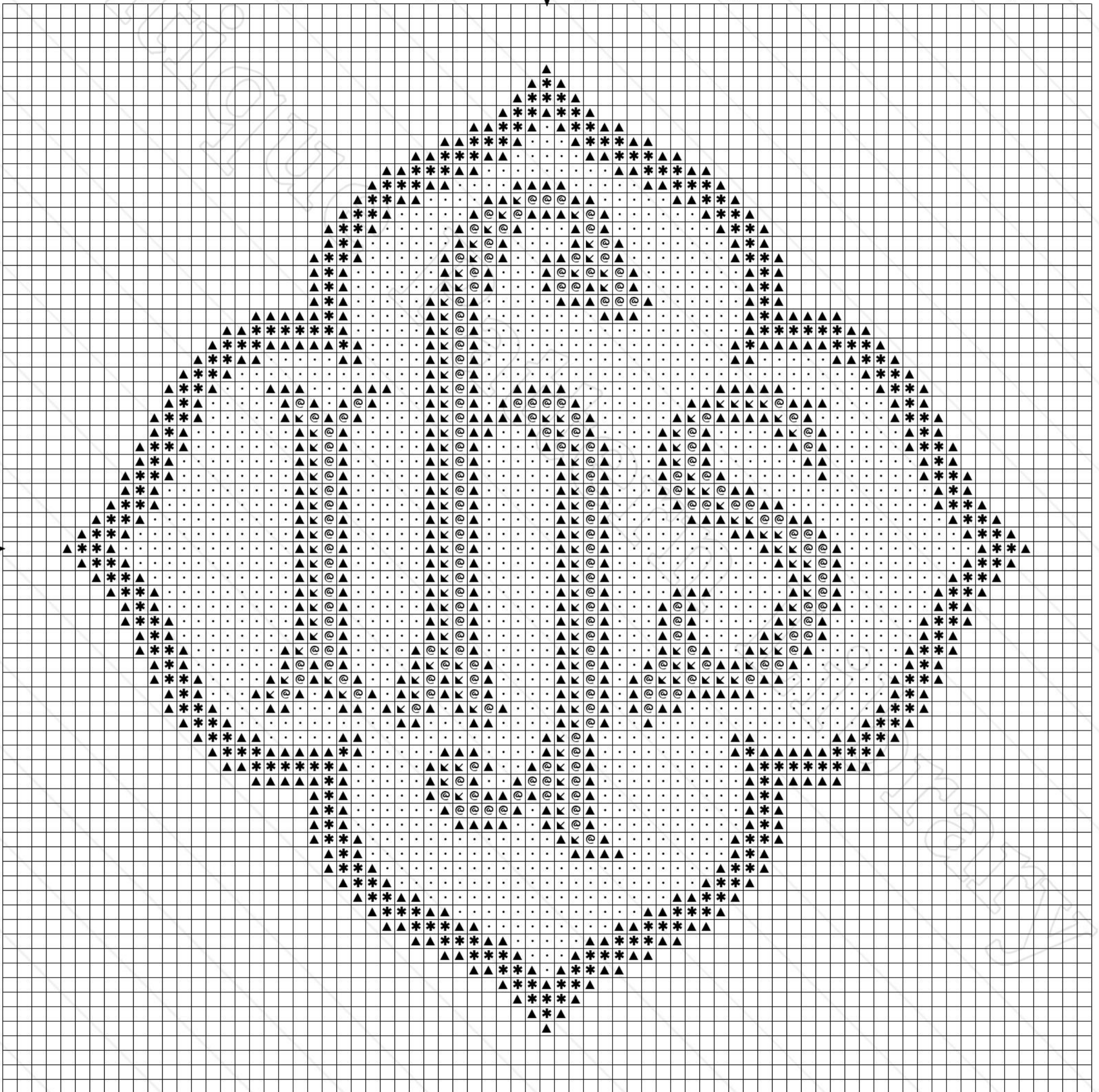
30

40

50

60

70



**Title:** G-CW016.1  
**Author:** Antique Pattern Library  
**Company:** New Media Arts, Inc.  
**Copyright:** Creative Commons 4.0 NC SA BY  
Free distribution only – NOT FOR SALE  
**Grid Size:** 75W x 75H  
**Design Area:** 4.79" x 4.79" (67 x 67 stitches)

**Legend: Stitches**

▲	DMC Cotton 801	coffee brown - dk
·	DMC Cotton 3046	yellow beige - md
*	DMC Cotton 728	golden yellow
@	DMC Cotton 892	carnation - md
▼	DMC Cotton 957	geranium - pl



10

20

30

▼ 40

50

60

70

10

20

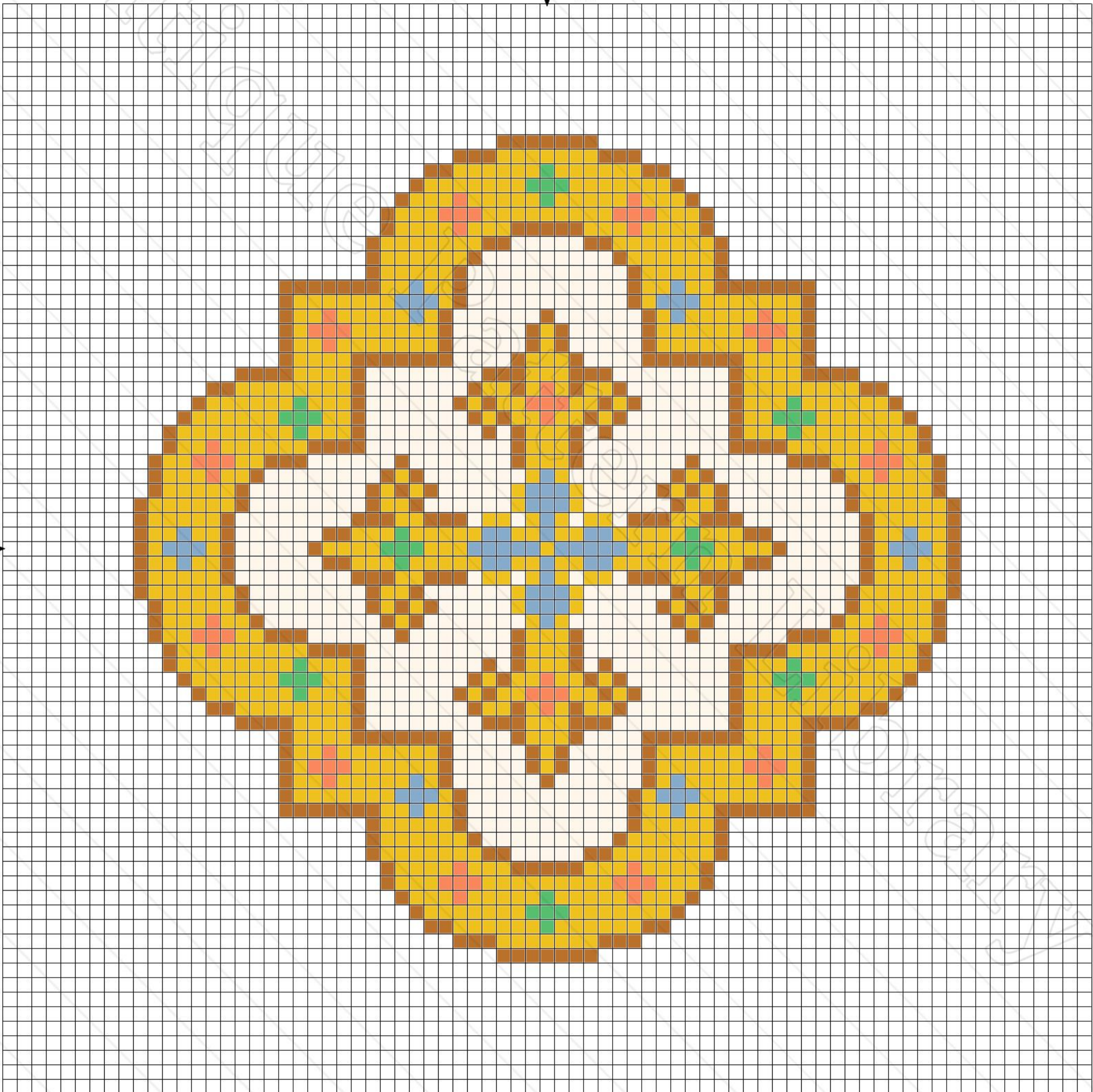
30

▼ 40

50

60

70



10

20

30

40

50

60

70

10

20

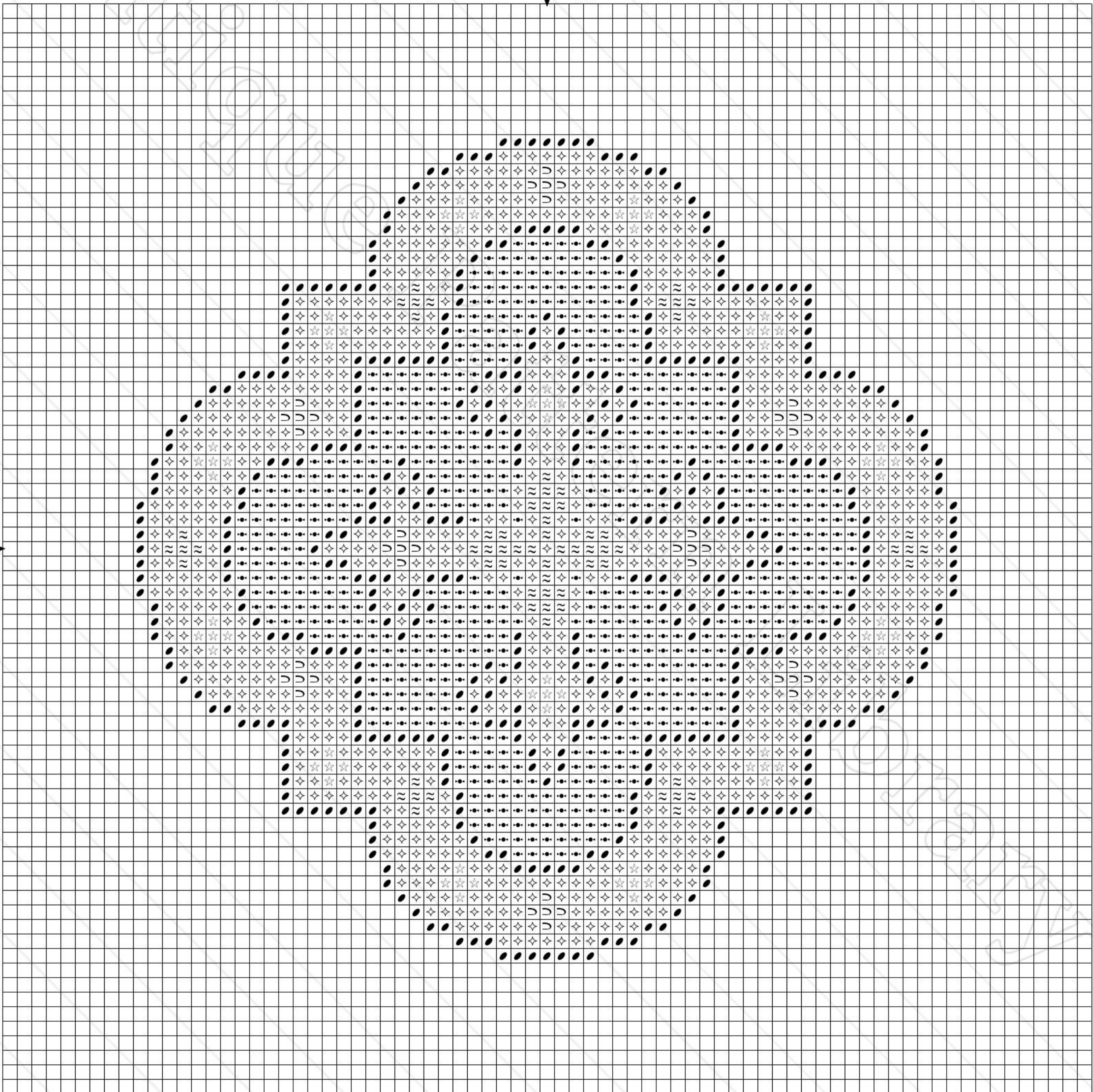
30

40

50

60

70



**Title:** G-CW016.2  
**Author:** Antique Pattern Library  
**Company:** New Media Arts, Inc.  
**Copyright:** Creative Commons 4.0 NC SA BY  
Free distribution only – NOT FOR SALE  
**Grid Size:** 75W x 75H  
**Design Area:** 4.07" x 4.07" (57 x 57 stitches)

**Legend: Stitches**

▷	DMC Cotton 912	emerald green - lt
☆	DMC Cotton 3340	apricot - md
≈	DMC Cotton 809	delft blue
●	DMC Cotton 3826	golden brown
✧	DMC Cotton 728	golden yellow
•	DMC Cotton 3770	tawny - vy lt





10

20

30

40

50

60

70

10

20

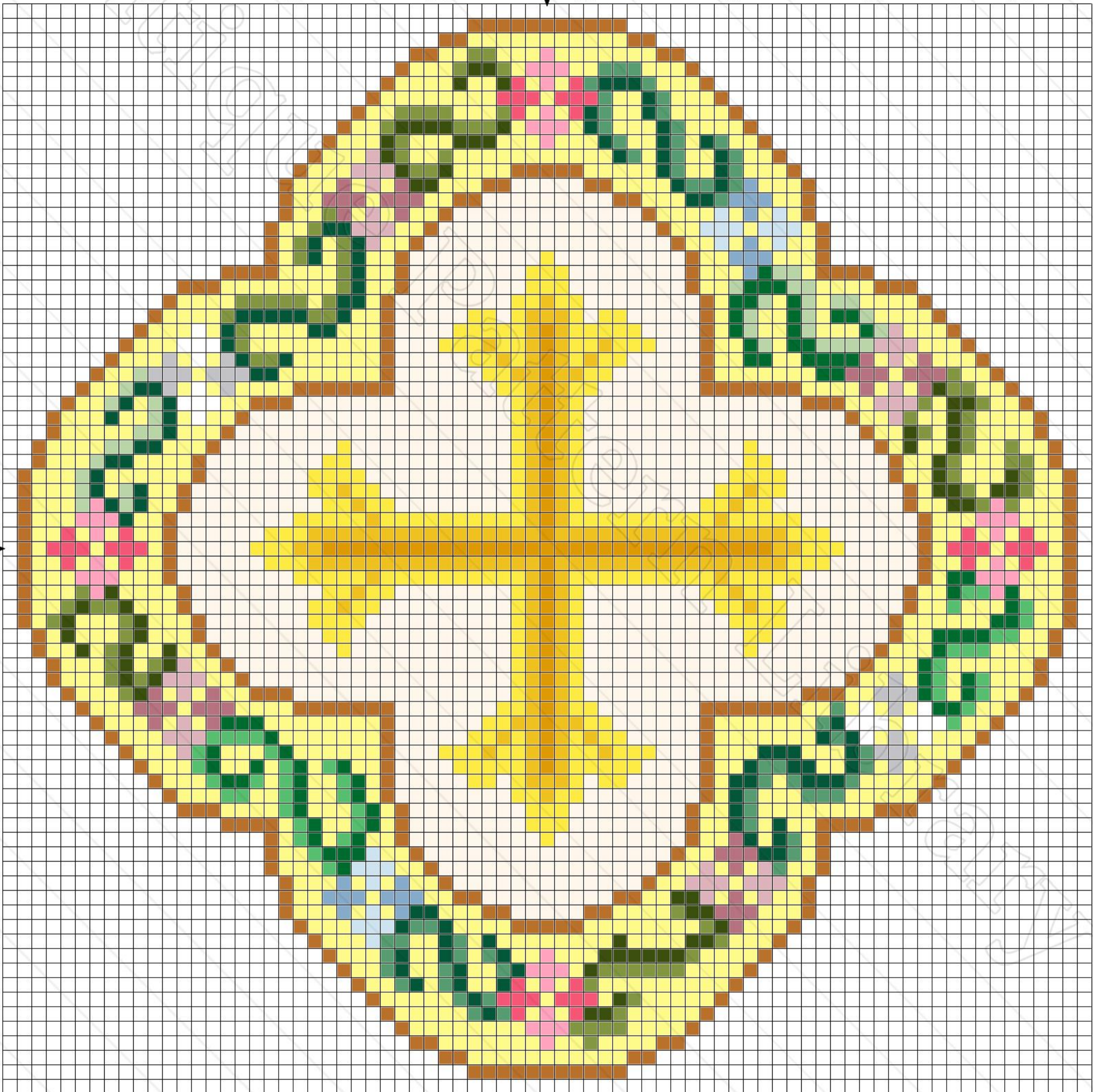
30

40

50

60

70



10

20

30

40

50

60

70

10

20

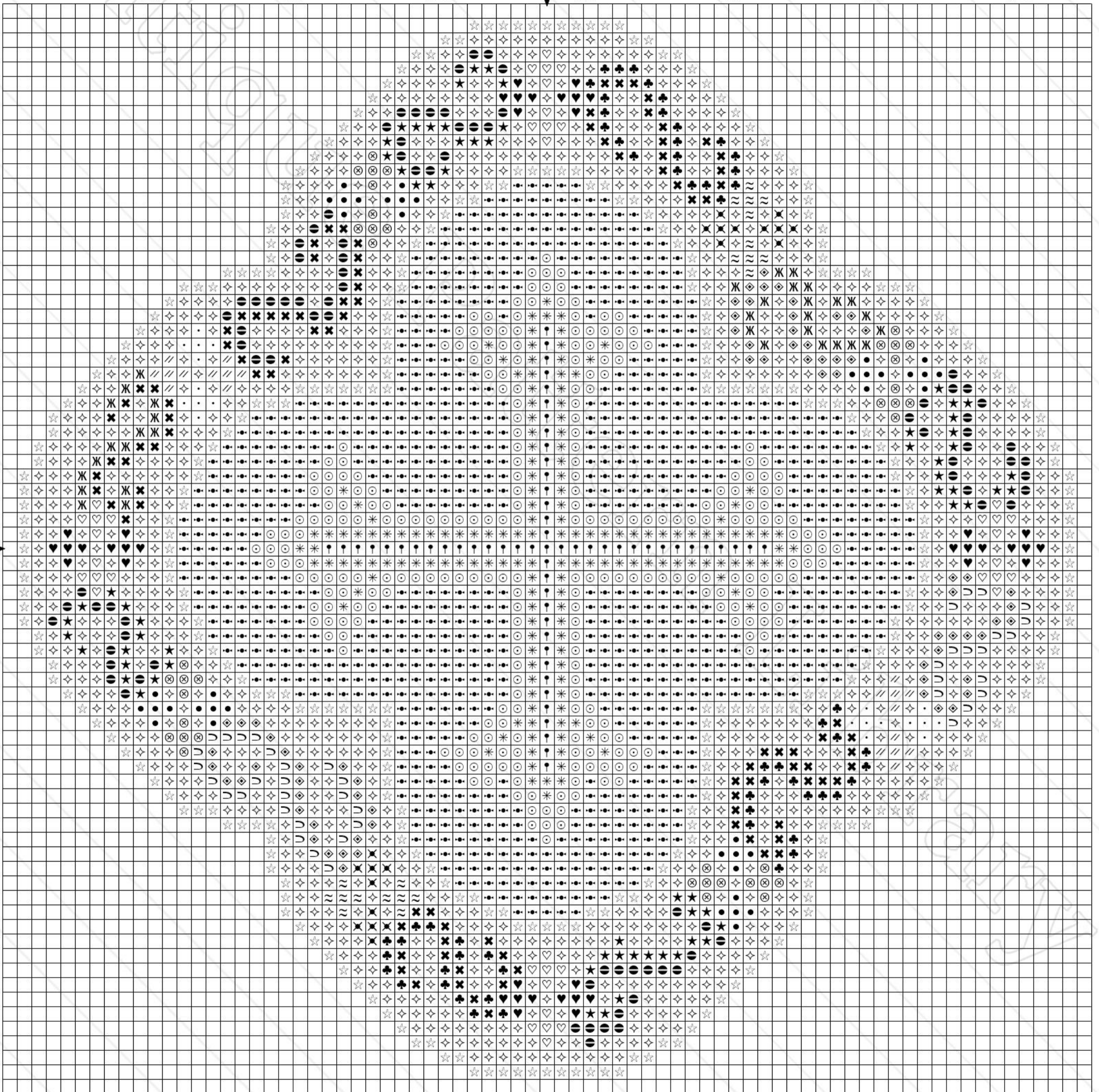
30

40

50

60

70



**Title:** G-CW016.3  
**Author:** Antique Pattern Library  
**Company:** New Media Arts, Inc.  
**Copyright:** Creative Commons 4.0 NC SA BY  
Free distribution only – NOT FOR SALE  
**Grid Size:** 75W x 75H  
**Design Area:** 5.21" x 5.21" (73 x 73 stitches)

**Legend: Stitches**

•	DMC Cotton White	white
⊙	DMC Cotton 307	lemon
∩	DMC Cotton 912	emerald green - lt
✧	DMC Cotton 445	lemon - lt
◇	DMC Cotton 3818	emerald green - ul vy dk
≈	DMC Cotton 809	delft blue
☆	DMC Cotton 3826	golden brown
//	DMC Cotton 415	pearl gray
*	DMC Cotton 728	golden yellow
♥	DMC Cotton 892	carnation - md
♡	DMC Cotton 957	geranium - pl
••	DMC Cotton 3770	tawny - vy lt
†	DMC Cotton 783	topaz - md
●	DMC Cotton 316	antique mauve - md
⊗	DMC Cotton 778	antique mauve - vy lt
✕	DMC Cotton 500	blue green - vy dk
♣	DMC Cotton 163	celadon green - md
★	DMC Cotton 935	avocado green - dk
⊖	DMC Cotton 469	avocado green
✕	DMC Cotton 162	blue - ul vy lt
Ж	DMC Cotton 164	forest green - lt



10

20

30

40

50

60

70

10

20

30

40

50

60

70



10

20

30

40

50

60

70

10

20

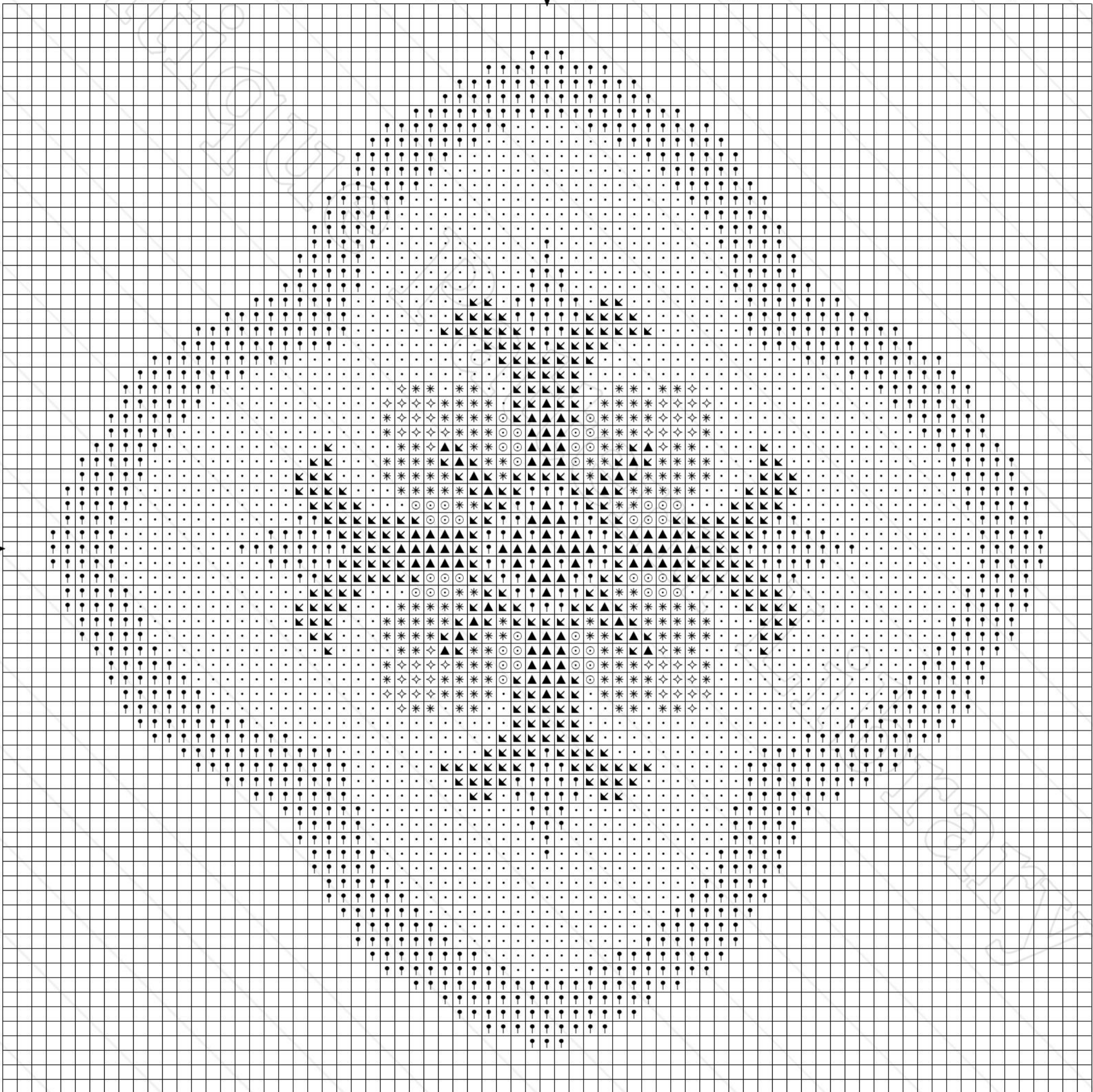
30

40

50

60

70



**Title:** G-CW016.4  
**Author:** Antique Pattern Library  
**Company:** New Media Arts, Inc.  
**Copyright:** Creative Commons 4.0 NC SA BY  
Free distribution only – NOT FOR SALE  
**Grid Size:** 75W x 75H  
**Design Area:** 4.93" x 4.93" (69 x 69 stitches)

**Legend: Stitches**

⊙	DMC Cotton 307	lemon
✧	DMC Cotton 445	lemon - lt
▲	DMC Cotton 801	coffee brown - dk
◀	DMC Cotton 3826	golden brown
*	DMC Cotton 728	golden yellow
•	DMC Cotton 3770	tawny - vy lt
●	DMC Cotton 783	topaz - md