

Fashions

*Knitted
Crocheted...*



...
SWEATERS
DRESSES
STOLES
CAPES

Knit to Fit

WITH

Dawn®

WOOLS AND NYLONS

BASIC MEASUREMENTS

We have tried to make the size measurements in this book as accurate as possible. Therefore, if you are knitting a size 12 sweater, the chest measurements for the average person should be 34 inches, as shown on the chart below. The number of stitches indicated in the directions for the sweater you are making in size 12 should work out to 34 inches if you follow your gauge correctly.

Measurements and directions shown in this book are blocking measurements as well as actual size measurements. Knit to fit! A chart below is for your guide.

SIZES:	4	6	8	10	12	14	16	18	20	38	40	42	44	46
CHEST:	26"	28"	30"	32"	34"	36"	38"	40"	42"	41"	42½"	44"	45½"	47"
Width	13"	14"	15"	16"	17"	18"	19"	20"	21"	20½"	21¼"	22"	22¾"	23½"
Across Back or Front at Underarm														

Cardigan measurements will vary according to style. The above measurements are given as a guide . . . some individual measurements will vary.

WASHING INSTRUCTIONS

Dip garment in and out of lukewarm water in which a good soap or soap flakes have been dissolved. Squeeze gently while doing. Rinse thoroughly with clear water. Roll in towel and gently squeeze out excess moisture. Remove from towel and ease garment to original shape and size. Dry flat — not near radiators nor direct heat.



GAUGE INSTRUCTIONS

The stitch gauge which appears at the beginning of all instructions for knitting and crocheting is very important to the size and fit of your garment. Before starting your work make a sample swatch of the pattern stitch with the needles or hook and yarn specified. If you get more stitches to the inch than gauge calls for, you are working tightly, therefore change to larger size needles or hook. If you get fewer stitches to the inch you are working loosely, therefore change to smaller size needles or hook. It is very important to check your gauge as you progress, to assure yourself of a perfectly sized garment.

In each set of instructions in this book, wherever an abbreviation is used, it is first written in full so there can be no misunderstanding that Ch stands for CHAIN and Sc for SINGLE CROCHET and Dc for DOUBLE CROCHET, and so forth. Every set of instructions actually spells out each abbreviation and from then on it is very simple to follow through. We hope you like our new way of writing directions and that they will prove more interesting than ever.

* (Asterisk) — This sign indicates that the instructions immediately following are to be repeated the given number of times plus the original.

** Are used in the same way.

The American Thread Company 260 W. BROADWAY, NEW YORK 13, N. Y.

PRINTED IN U.S.A.—1956

SUNNY — The Broad Ribbed Cardigan

SMALL, MEDIUM AND LARGE

Materials Required:
AMERICAN THREAD COMPANY
"DAWN" KNITTING WORSTED
or "DAWN" NYLON OF KNITTING
WORSTED SIZE

17 (19, 21) ozs. Watermelon or Flame or color of your choice

Knitting Needles: 1 pair each No. 4 and No. 10
Steel crochet hook No. 0
8— $\frac{3}{4}$ inch buttons

GAUGE: 4 sts = 1 inch 10 rows = 1 inch
Directions are given for Small size (10 to 12). Medium (14 to 16) and Large (18 to 20) are given in parentheses.

BACK: On No. 10 needles cast on 65 (69, 73) stitches (sts).

1st Row. Purl (P) 1, knit (K) 1, * yarn over (y o), slip (sl) 1 as if to P, K 1, repeat from * across row, ending with P 1.

2nd Row. K1, keeping yarn in front of work, y o, slip 1 as if to P, * keeping yarn in back of work, K the y o and next st together (tog), y o, sl 1, repeat from * across row ending with K 1.

3rd Row: (Right side of work) P 1, K the y o and next st tog, * keep yarn in front of work, y o, sl 1 as if to P, keeping yarn in back of work, K the y o and next st tog, repeat from * across row ending with P 1.
Repeat last 2 rows for pattern.

NOTE: The yarn over and the next st are always counted as one single st and will not be referred to again.

Work even in pattern until piece measures 11 (11 $\frac{1}{2}$, 12) inches or length desired ending on wrong side of work.

SHAPE ARMHOLES: Keeping pattern even, decrease in next 3 rows as follows:

1st Row: Work across 6 sts, K 2 sts tog, work to within 7 sts, K 2 sts tog, work to end of row.

2nd Row: Work across 5 sts, y o, sl 2 as if to P, work to within 7 sts, y o, sl 2 as if to P, work to end of row.

3rd Row: Work across 5 sts, K 2 sts tog, work to within 7 sts, sl next st and y o tog as if to K, K 1, pass the sl st and y o over the st just knitted, work to end of row.

Next 9 (7, 9) Rows: Work even in pattern.
Repeat last 12 (10, 12) rows twice.

Continue to shape armholes in same manner decreasing 6 (7, 7) more times working 9 even rows between decreasing rows and ending with the decreasing row.

Next Row: Work in pattern decreasing 1 st at beginning and end of row.

Next 2 Rows: Work even, bind off.

LEFT FRONT: On No. 10 needles cast on 33 (35, 37) sts and work same as back to underarm ending on wrong side of work.

SHAPE ARMHOLE: Keeping pattern even, decrease in next 3 rows as follows:

1st Row: Work across 6 sts, K 2 sts tog, work to end of row.

2nd Row: Work across row to within 7 sts, y o, sl 2 sts as if to P, work to end of row.

3rd Row: Work across 5 sts, K 2 sts tog, work to end of row.

Next 9 (7, 9) Rows: Work even in pattern.
Repeat last 12 (10, 12) rows twice.

Continue to shape armhole in same manner decreasing 6 (7, 7) more times working 9 even rows between decreasing rows, ending with a decreasing row.

Next Row: Bind off 4 sts at beginning of row for neck edge, work in pattern across remainder of row.

Next Row: Work even in pattern.

Next Row: Bind off 4 sts at beginning of row, work in pattern across remainder of row, bind off.

RIGHT FRONT: Work to correspond to Left Front reversing all shaping and working decreases same as on left side of back.

SLEEVES: On No. 4 needles cast on 44 (46, 48) sts and work in ribbing of K 1, P 1 for 1 $\frac{3}{4}$ inches, decreasing 1 st in last row of ribbing.

Next Row: Change to No. 10 needles P 1, K 1, * y o, sl 1, K 1, repeat from * across row ending with P 1.

Work in pattern until sleeve measures 10 (10 $\frac{1}{2}$, 11) inches from beginning ending on wrong side of work.

SHAPE SLEEVE: Keeping pattern even decrease in next 3 rows as follows:

1st Row: Work across 4 sts, K 2 tog, work to within 5 sts, K 2 tog, work to end of row.

2nd Row: Work across 3 sts, y o, sl 2 as if to P, work to within 5 sts, y o, sl 2 as if to P, work to end of row.

3rd Row: Work across 3 sts, K 2 tog, work to within 5 sts, sl next st and y o tog as if to K, K 1, pass sl st and y o over the st just knitted, work to end of row.

Next 9 (7, 9) Rows: Work even in pattern.
Repeat last 12 (10, 12) rows twice.

Continue to shape sleeve in same manner decreasing 5 (6, 6) more times working 9 even rows between decreasing rows, ending with 9 even rows.

Next Row: Work across 2 sts, K 2 tog, work to within 3 sts, K 2 tog, work to end of row.

Next Row: K 1, y o, sl 2 as if to P, work to within 3 sts, y o, sl 2 as if to P, K 1.

Next Row: P 1, K 2 tog, work to within 3 sts, sl next st and y o as if to K, K 1, pass sl st and y o over st just knitted, P 1.

Continued on Page 27



It's a Coat

It's a Dress

SIZES 10 - 12 - 14 - 16

Materials Required:
AMERICAN THREAD COMPANY
"DAWN" BULKY YARN

30 (34, 38, 42) ozs. White or color of your choice
1 pr. wooden or plastic knitting needles No. 11
1—1 inch button

3 yds. Grosgrain ribbon 2 inches wide for facing

GAUGE: 7 sts = 2 inches 5 rows = 1 inch

Directions are given for size 10. Sizes 12, 14 and 16 are given in parentheses.

Measurements:	Sizes: 10	12	14	16
Width across back at underarm	16½"	17½"	18½"	19½"
Width across each front at underarm	9½"	10"	10½"	11"
Side seam	37"	37"	37½"	37½"

PATTERN: 1st Row: Knit (K) 1, Purl (P) 1.

2nd Row: Purl across row. These 2 rows form the pattern.

COAT

LEFT FRONT: Cast on 36 (38, 40, 42) stitches (sts) and K 5 rows.

6th Row: * K 1, P 1, repeat from * to within last 6 sts, K last 6 sts for border.

7th Row: K 6, P remainder of row.

Repeat the last 2 rows until work measures 13 inches from beginning always working the 6 border sts in garter st.

Next Row: Keeping pattern uniform, decrease 1 st at side edge, then decrease 1 st at side edge every 3½ inches 5 more times. Work even in pattern until work measures 37 (37, 37½, 37½) inches or length desired to underarm, ending at side edge.

Next Row: SHAPE ARMHOLE: Bind off 4 (5, 5, 6) sts at underarm then work even in pattern for 5 inches from bind off ending at front edge.

Next Row: Bind off 8 (9, 9, 9) sts at neck edge, then decrease 1 st at neck edge every other row 3 (3, 4, 4) times. Work even until armhole measures 7¼ (7¼, 7½, 7½) inches ending at armhole edge.

Next Row: Bind off 15 (15, 16, 17) sts for shoulder. Work Right Front in same manner reversing the de-

creasing, shaping and front edge.

BACK: Cast on 64 (66, 70, 74) sts and K 5 rows.

Next Row: * K 1, P 1, repeat from * across row ending with K 1.

Next Row: Purl across row. Repeat the last 2 rows until back measures 13 inches from beginning.

Next Row: Keeping pattern uniform, decrease 1 st on each side, then decrease 1 st on each side every 3½ inches 5 more times.

Work even in pattern until back measures 37 (37, 37½, 37½) inches or length desired to underarm.

Next 2 Rows: SHAPE ARMHOLES: Bind off 4 (5, 6, 6) sts at beginning of each row. Work even in pattern until armholes measure 7¼ (7¼, 7½, 7½) inches.

Next 2 Rows: Bind off 15 (15, 16, 17) sts at beginning of each row.

Next Row: Bind off remaining sts for back of neck. Block each section. Sew shoulder seams.

SLEEVE: With right side of work toward you and working in pattern of K 1, P 1 pick up 41, (43, 47, 49) sts around armhole.

2nd Row: P across row.

3rd Row: * K 1, P 1, repeat from * across row. Repeat the last 2 rows 3 times.

Next Row: Keeping pattern uniform, decrease 1 st each side, then decrease 1 st each side every 9th row twice. Work even until sleeve measures 6½ inches ending on right side. K 5 rows, bind off. Work other sleeve in same manner. Sew underarm and sleeve seams.

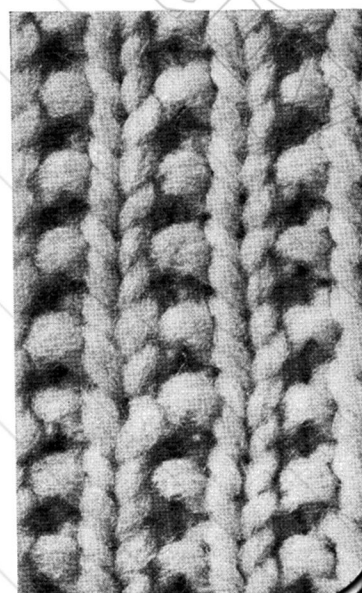
NECK BAND: With right side toward you, pick up 46 (48, 48, 50) sts around neck and work in ribbing of K 2, P 2 for ¾ inch ending on wrong side.

Next Row: Work 3 sts, bind off next 3 sts for buttonhole, work across remainder of row.

Next Row: Work in ribbing casting on 3 sts over the 3 bound off sts. Work in ribbing for ½ inch, bind off in ribbing. Sew button in position. Sew ribbon on inside of each front for facing. Cut buttonhole and finish in buttonhole st. Sew binding on each side seam.

DRESS

Work in same manner as Coat but overlap the front border and sew to about 2 inches above waistline.



JIM - An Extraordinary Guy

Materials Required:

AMERICAN THREAD COMPANY
"DAWN" BULKY YARN

Sizes: 40 42 44 46
Ozs. 22 24 26 30 BEIGE or
color of your choice

Knitting Needles: 1 pr. each Plastic No. 8 and
Wooden No. 11

GAUGE: 3 sts = 1 inch 4 rows = 1 inch

Sizes: 40 42 44 46

BACK: With No. 8 needles
cast on **Stitches (Sts)** 62 66 70 74
Work in ribbing of Knit
(K) 1, Purl (P) 1 for
..... **Inches** 3½ 3½ 4 4

Change to No. 11 needles
and work in stockinette st
(K 1 row, P 1 row) until
back measures **Inches** 15½ 15½ 16 16
from beginning.

SHAPE ARMHOLE: Bind off
..... **Sts** 3 3 4 4
at beginning of next 2 rows.
Decrease 1 st on each side
every other row **Times** 3 3 3 3
Work even until armhole
measures **Inches** 9 9 9½ 9½
from 1st decreasing point.

SHOULDERS: Next 2 Rows.
Bind off **Sts** 6 7 8 8
at beginning of each row.

Next 2 Rows. Bind off **Sts** 7 8 8 9
at beginning of each row.
Bind off remaining **Sts** 24 24 24 26
for back of neck.

FRONT: With No. 8 needles
cast on **Sts** 62 66 70 74
Work same as back to un-
derarm ending with K row.

SHAPE ARMHOLES

Work in pattern as follows:
1st Row. Bind off **Sts** 5 5 6 6
at the beginning of row and
K across row (wrong side of
pattern).

2nd Row. Bind off **Sts** 5 5 6 6
and K across row.

3rd Row. K across row de-
creasing 1 st on each side.

Sizes: 40 42 44 46

4th Row. (right side) K. **Sts** 2 3 1
(always having yarn in back
of work on K rows)

slip (sl) **Sts** *2 *2 *2 *2

K **Sts** 6 6 6 6

repeat from * **Times** 5 5 5 6

ending row with sl **Sts** 2 2 2 2

K **Sts** 2 3 1

5th Row. P **Sts** 2 3 1

(always having yarn in
front of work on P rows)

sl **Sts** *2 *2 *2 *2

P **Sts** 6 6 6 6

repeat from * **Times** 5 5 5 6

ending row with sl **Sts** 2 2 2 2

P **Sts** 2 3 1

Repeat last 2 rows twice.

10th Row. P across row.

11th Row. K across row.

12th Row. Same as 10th row.

13th Row. P **Sts** 4 2 3 1

sl **Sts** *2 *2 *2 *2

P **Sts** 6 6 6 6

repeat from * **Times** 4 5 5 6

ending row with sl **Sts** 2 2 2 2

P **Sts** 4 2 3 1

14th Row. K **Sts** 4 2 3 1

sl **Sts** *2 *2 *2 *2

K **Sts** 6 6 6 6

repeat from * **Times** 4 5 5 6

ending row with sl **Sts** 2 2 2 2

K **Sts** 4 2 3 1

Repeat last 2 rows twice.

19th Row. Same as 1st row.

20th Row. Same as 2nd row.

21st Row. Same as 3rd row.

4th through 21st rows form
the pattern.

Repeat 4th through 21st
rows once.

Next Row Start Neck: Keep-
ing pattern uniform, work
across **Sts** 19 21 22 24

bind off 12 sts for neck, work

across next **Sts** 19 21 22 24

Next Row. Work across **Sts** 19 21 22 24

tie in another ball of yarn
and then work both sides at
same time decreasing 1 st at
neck edge every other row

Antique Pattern

Sizes: 40 42 44 46

until there are..... **Sts** 13 16 18 19
 on needle for each shoulder.
 Work even until armhole
 measures same as back arm-
 hole. Bind off shoulders
 same as back shoulders.

SLEEVES: With No. 8 needles
 cast on..... **Sts** 36 38 40 40
 Work in ribbing of K 1, P 1
 for..... **Inches** 3½ 3½ 4 4

Change to No. 11 needles
 and work in stockinette st,
 increasing 1 st each side
 every inch until there are
 **Sts** 48 48 50 50

on needle, then increase 1 st
 each side every 2 inches un-
 til there are..... **Sts** 54 54 56 58

on needle. Work even until
 sleeve measures..... **Inches** 18 18½ 19 19
 from beginning, or length
 desired to underarm.

Next 2 Rows. Bind off... **Sts** 4 4 5 5
 at beginning of each row,
 then decrease 1 st each side
 every other row until..... **Sts** 26 26 28 28
 remain on needle.

Next 4 Rows. Bind off... **Sts** 3 3 3 3
 at beginning of each row.

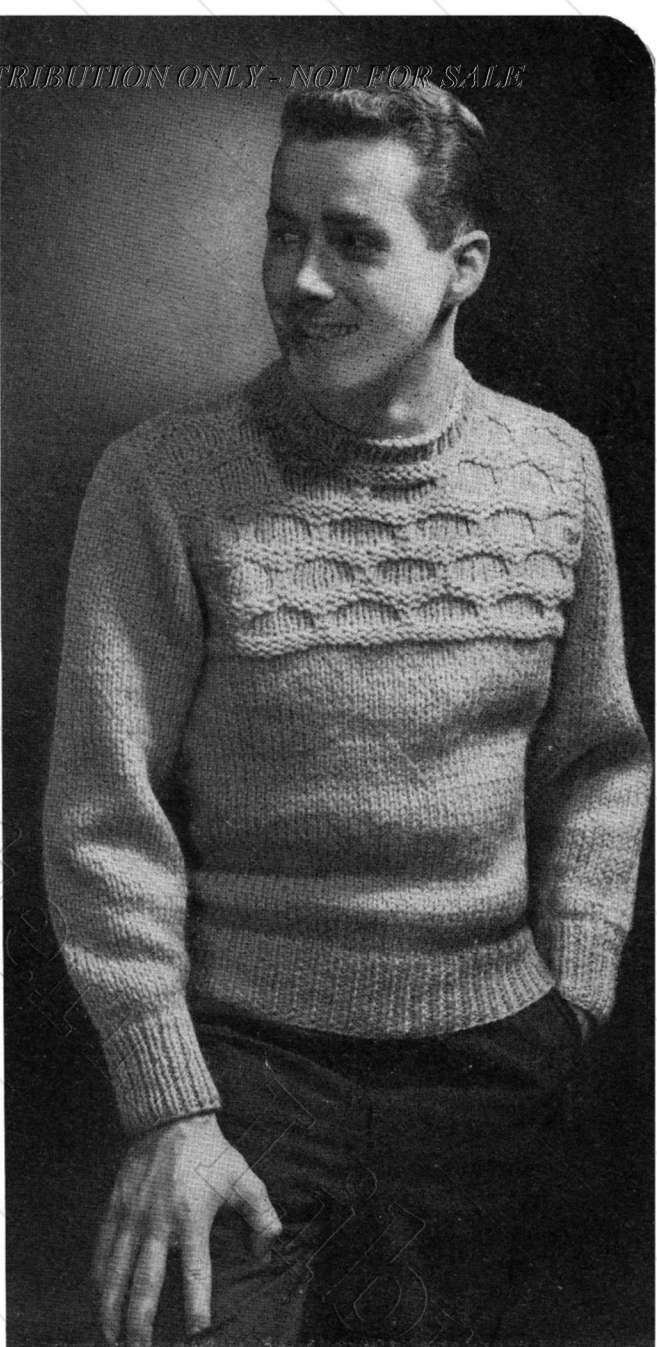
Next 2 Rows. Bind off... **Sts** 5 5 6 6
 at beginning of each row.
 Bind off remaining sts.

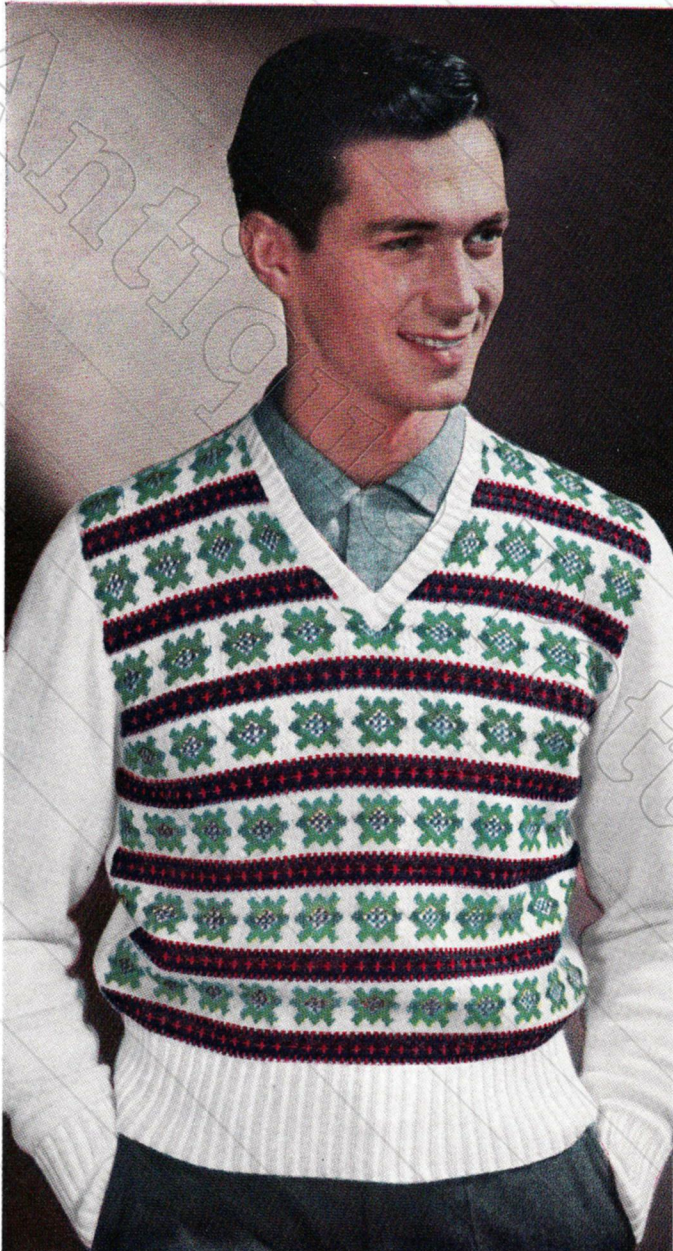
BACK NECK BAND: With
 No. 8 needles and right side
 of work toward you pick up
 and K..... **Sts** 20 22 24 24

evenly spaced around neck
 edge. Work in ribbing of
 K1, P1 for 1¼ inches, bind
 off loosely.

FRONT NECK BAND: With
 No. 8 needles and right side
 of work toward you pick up
 and K..... **Sts** 46 46 48 48

evenly spaced around neck
 edge. Work in ribbing of
 K 1, P 1 for 1¼ inches. Bind
 off loosely in ribbing.
 Block each section. Sew
 seams and sew sleeves in
 position.

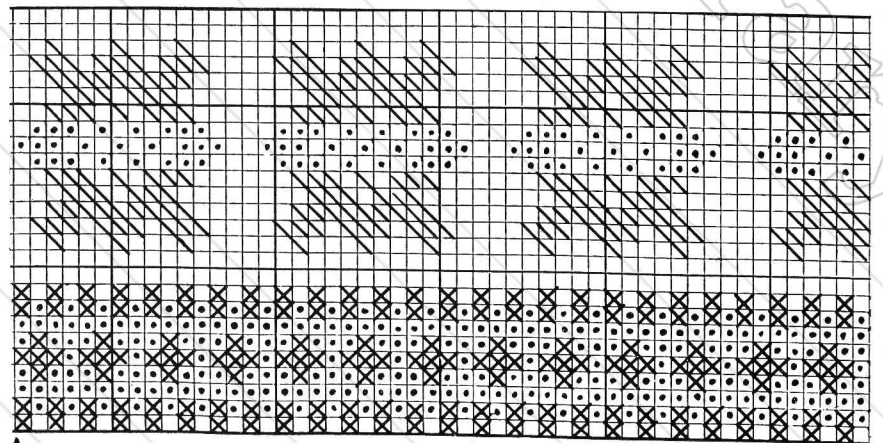




DON— A Fair Isle Favorite

Directions on Page 10

- White
- Royal Blue or National Blue
- Medium Green or Jockey Green
- Scarlet or Red

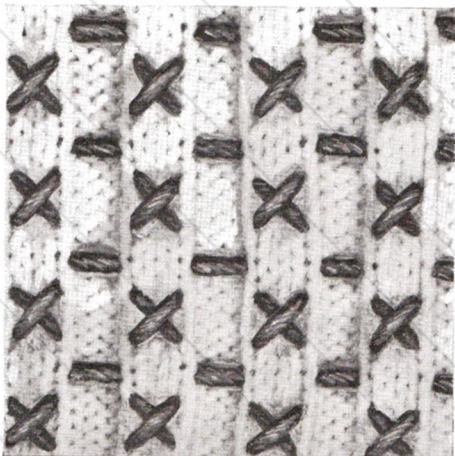


No. 3

No. 2

Sizes 38 40 42 44

*LILA—
A Sports
Choice*



Directions on Page 11

DON

Illustrated on Page 8

Materials Required:

AMERICAN THREAD COMPANY
 "DAWN" or "CLOVERLEAF" NYLON or
 { "DAWN" SWEATER AND SOCK YARN }
 { "SANFORLAN" Won't Shrink Out Of Fit. }

Sizes: 38 40 42 44

Ozs.: 11 11 12 13

WHITE or
 color of your choice

and 1 oz. each Royal Blue or National Blue, Medium Green or Jockey Green, Scarlet or Red.

Knitting Needles: 1 pair each No. 1 and No. 3

GAUGE: 8 sts = 1 inch 10 rows = 1 inch

Sizes: 38 40 42 44

BACK: With White on No. 1 needles cast on. **Stitches (Sts)** 162 168 174 180

Work in ribbing of Knit (K) 2, Purl (P) 2 for.....**Inches** 3 3½ 3½ 3½

Change to No. 3 needles, work even in stockinette st (K 1 row, P 1 row) until back measures**Inches** 13½ 14 14½ 15 from beginning.

Next 2 Rows. Bind off...**Sts** 9 10 10 11

at the beginning of each row, then decrease 1 st on each side every other row

.....**Times** 6 7 7 8

Work even until armhole measures.....**Inches** 8 8½ 9 9½ from 1st decreasing point.

Next 6 Rows. Bind off.....**Sts** 15 15 16 16

at the beginning of each row.

Bind off remaining.....**Sts** 42 44 44 46 for back of neck.

FRONT: With White on No. 1 needles cast on.....**Sts** 164 170 176 182

Work in ribbing for. **Inches** 3 3½ 3½ 3½

decreasing 1 st on last row of ribbing. Change to No. 3 needles, work in stockinette st following chart on page 8 starting at arrow designating size working to No. 3 arrow then repeat between arrows No. 2 and No. 3 across row ending row same as beginning. Repeat the 26 rows of chart until front measures same as back to underarm. Keeping pattern even shape armhole same as back armhole, ending on right side of work.

Next Row. Work in pattern

Sizes: 38 40 42 44
 across.....**Sts** 66 67 70 71

tie in another ball of yarn and working both sides at the same time decrease 1 st, work across remaining sts.

Next Row. Decrease 1 st at neck edge, then decrease 1 st at neck edge every 3rd row

.....**Times** 20 21 21 22

Work even in pattern until armhole measures same as back armhole.

Bind off shoulders same as back shoulders.

SLEEVES: With White on No. 1 needles cast on.....**Sts** 80 80 84 84

Work in ribbing for. **Inches** 3 3½ 3½ 3½

Change to No. 3 needles. Work in stockinette st, increasing 1 st on each side every ½ inch until there are

.....**Sts** 126 132 138 142

on needle. Work even until sleeve measures.....**Inches** 18½ 19 19 19½

from beginning or length desired to underarm.

Next 2 Rows. Bind off.....**Sts** 9 10 11 11

at beginning of each row, then decrease 1 st on each side every other row until

.....**Sts** 56 58 60 62

remain, then decrease 1 st on each side every row until

.....**Sts** 22 24 26 26

remain. Bind off.

BACK NECK BAND: With White and No. 1 needles pick up and K.....**Sts** 42 44 46 48

work in ribbing of K 2, P 2 for.....**Inch** ¾ ¾ 1 1

bind off in ribbing.

LEFT FRONT NECK BAND:

With White starting at shoulder on No. 1 needles pick up and K.....**Sts** 92 94 96 98

work in ribbing of K 2, P 2 for.....**Inch** ¾ ¾ 1 1

decreasing 1 st at center front every row, bind off.

RIGHT FRONT NECK BAND:

Starting at center front, pick up and K.....**Sts** 92 94 96 98

and work same as Left Front Neck Band.

Sew ribbing at center front. Block each section. Sew sleeves, shoulders and side seams. Sew sleeves in position.

LILA

Illustrated on Page 9

Materials Required:

AMERICAN THREAD COMPANY
"DAWN" or "CLOVERLEAF" NYLON or
"DAWN" SOCK AND SWEATER YARN

Sizes: 10 12 14 16

Ozs.: 8 9 10 11 ROYAL BLUE or
Ozs.: 1 2 2 2 NATIONAL BLUE
Ozs.: 1 1 2 2 WHITE
SCARLET or
colors of your choice

Knitting Needles: No. 1 and No. 3

GAUGE: 8 sts = 1 inch 10 rows = 1 inch

Sizes: 10 12 14 16

BACK: With Blue and No. 1
needles cast on **Stitches (Sts)** 129 135 141 147
Work in ribbing of Knit (K)
3, Purl (P) 3 for **Inches** 3 3 3½ 3½
increasing **Sts** 6 6 6 6
evenly spaced across last row
Sts 135 141 147 153

on needle.
Change to No. 3 needles and
work in stockinette st of (K 1
row, P 1 row) for **Inches** 11½ 12 12½ 13
from beginning or desired
length ending on right side
of work.

Next Row. Change to rib-
bing of K 3, P 3.

ARMHOLE: Keeping ribbing
uniform bind off **Sts** 6 6 6 6
at beginning of next 2 rows.
Decrease 1 st at the begin-
ning and end of every other
row **Times** 7 7 7 7
Working in ribbing, work
even on **Sts** 109 115 121 127
until armhole measures
Inches 7¼ 7½ 7¾ 8
from 1st decreasing point.

SHOULDERS: Bind off **Sts** 10 11 11 12
at beginning of each of the
next 2 rows, bind off **Sts** 11 12 12 13
at the beginning of the next
4 rows.

Place remaining **Sts** 45 45 51 51
on holder for back of neck.

FRONT: Work same as back
until armhole measures
Inches 5½ 5¾ 6 6¼
from 1st decreasing point.

Work across **Sts** 38 41 41 44
tie in another ball of yarn,
bind off loosely next **Sts** 33 33 39 39

Sizes: 10 12 14 16

Work across remaining **Sts** 38 41 41 44

Working both sides at same
time decrease 1 st at neck
edge every other row **Times** 6 6 6 6

Work even in ribbing until
armhole measures same as
back armholes. Bind off
shoulders same as back
shoulders.

SLEEVES: On No. 1 needles
with Blue cast on **Sts** 66 72 78 86

work in ribbing of K 3, P 3
for 3 inches. Change to No.
3 needles and work in rib-
bing for entire sleeve.

Increase 1 st at beginning
and end of every 6th row
until there are **Sts** 112 118 124 130

on needle. Work even until
sleeve measures **Inches** 17 17½ 18 18½

from beginning or length
desired. Bind off at begin-
ning of each of the next 2
rows **Sts** 6 6 6 6

Decrease 1 st at the begin-
ning and end of every other
row until **Sts** 70 70 72 72

remain. Decrease 1 st at be-
ginning and end of every
row until **Sts** 24 24 26 26
remain. Bind off.

TURTLE NECK: Sew right
shoulder seam. With right
side of work toward you and
No. 1 needles attach Blue to
front left shoulder at neck
edge, pick up and K **Sts** 81 81 93 93
around front of neck, K **Sts** 45 45 51 51
from holder on back.

Work in ribbing of K 3, P 3
on **Sts** 126 126 144 144
for 1¾ inches.

Change to No. 3 needles, re-
verse ribbing pattern and
work for another 1¾ inches,
bind off loosely in ribbing.

FINISHING:
Embroider front and back ribbed yokes and sleeves as
illustrated. Use a double strand of yarn for all stitches.
With White embroider cross stitches over 4 rows on all
raised ribs leaving 3 rows plain between cross stitches.
With Scarlet embroider horizontal lines on all other
ribs placing lines parallel to center st between cross
stitches. When embroidering horizontal lines be care-
ful not to pull yarn too tightly, so as not to interfere
with natural tension.

NELL - The Traveller

Materials Required:

AMERICAN THREAD COMPANY

{ "DAWN" SWEATER AND SOCK YARN }
 { "SANFORLAN" Won't Shrink Out Of Fit } or
 "DAWN" or "CLOVERLEAF" NYLON

Skirt:

Sizes:	12	14	16	18	
Ozs.:	18	19	20	21	BLUE SANFORLAN
Ozs.:	16	17	18	19	FRENCH BLUE NYLON or color of your choice.

Cardigan:

Sizes:	12	14	16	18	
Ozs.:	8	9	10	10	SANFORLAN
Ozs.:	7	8	9	10	NYLON

Knitting Needles: No. 1 and No. 4

Steel crochet hook No. 3

GAUGE: 7 Stockinette Stitches (sts) = 1 inch
 14 Pleated Stitches = 1 inch.

- 2 snap fasteners
- 7 yards narrow velvet ribbon
- 1 yard elastic
- 1/2 yard - 1 inch grosgrain ribbon
- 7 (7, 8, 8) buttons

		Skirt			
Sizes:	12	14	16	18	

PLEATED PATTERN STITCH:

1st Row. Purl (P) 3, * knit (K) 1, P 1, repeat from * twice, K 3, P 1, K 1, repeat from beginning across row.

2nd Row. P 1, K 1, P 3, (K 1, P 1) 3 times, K 3, repeat from beginning across row.

On No. 4 needles cast on. **Sts** 336 350 364 378

Work even in Pleated Pattern st for.....	Inches	23	23	23	23
or.....	Inches	6	6	6	6

less than length desired, ending on wrong side.

Next Row. P 3, P 2 together (tog), * K 1, P 1, repeat from * once, K 3, P 1, K 1, repeat from beginning across row.

Next Row. P 1, K 1, P 3, (K 1, P 1) twice, K 4, repeat from beginning across row.

Next Row. P 4, (K 1, P 1) twice, K 3, P 1, K 1, repeat from beginning across row. Repeat last 2 rows for 2 inches ending on wrong side.

Next Row. P 2, P 2 tog, (K 1, P 1) twice, K 3, P 1, K 1, repeat from beginning

Sizes: 12 14 16 18

across row.

Next Row. P 1, K 1, P 3, (K 1, P 1) twice, K 3, repeat from beginning across row.

Next Row. P 3 (K 1, P 1) twice, K 3, P 1, K 1, repeat from beginning across row. Repeat last 2 rows for 1 inch .

Change to No. 1 needles.

* K 2 tog, P 2 tog, repeat from * across row. Work in ribbing of (K 1, P 1) decreasing 1 st at beginning and end of every other row for 3 inches. Bind off loosely in ribbing.

Work another section in same manner.

Sew side seams. Crochet a casing for elastic on inside of waist as follows: attach yarn at top of side seam and working around waistline, * chain (ch) 3, skip 3 sts, slip st (sl st) in next st 8 rows down from top, ch 3, skip 3 sts, sl st in next st at top, repeat from * all around, cut yarn. Cut elastic to fit waist measurement, run through casing and sew ends together.

Cardigan

BACK: On No. 4 needles cast on **Sts** 100 107 114 121 and work in stockinette st (K 1 row, P 1 row) for 1 inch.

Next Row. Increase 1 st on each side, then increase 1 st on each side every inch 2 more times. Work even until back measures. **Inches** 11 1/2 12 12 1/2 13 from beginning.

Next Row. Increase 1 st on each side, then increase 1 st on each side every inch 2 more times.

Next 2 Rows. Cast on..... **Sts** 16 20 24 28 at the end of each row, then increase 1 st on each side every inch..... **Times** 4 4 5 5

Work even until back measures..... **Inches** 20 20 1/2 21 21 1/2 from beginning.

Sizes: 12 14 16 18

SHAPE SHOULDERS: Bind off at beginning of each row

..... Sts	10	11	12	13
..... Times	12	12	12	12
Bind off remaining..... Sts	32	35	40	43

for back of neck.

LEFT FRONT: Cast on.....**Sts** 64 68 72 76 and work in stockinette st to within last 15 sts. Work in ribbing K 1, P 1 over these last 15 sts throughout for front border.

Next Row. Increase 1 st at side edge, then increase 1 st at side edge every inch 2 more times. Work even until front measures.....**Inches** 11½ 12 12½ 13 from beginning.

Next Row. Increase 1 st at side edge, then increase 1 st at side edge every inch 2 more times.

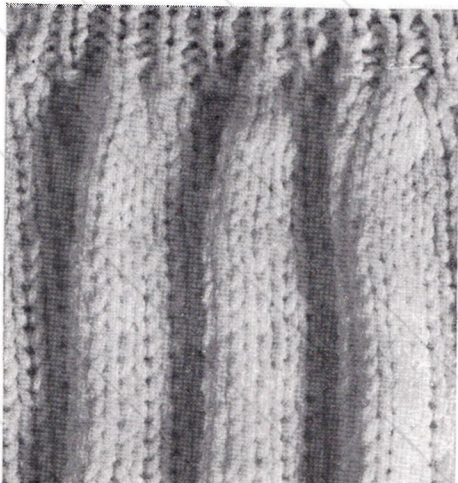
Next Row. Cast on.....**Sts** 16 20 24 28 at side edge for sleeve.

Increase 1 st at side edge every inch.....**Times** 4 4 5 5 at same time when sleeve measures.....**Inches** 3¾ 4 4¼ 4½ bind off.....**Sts** 22 24 27 29

at front edge, then decrease 1 st at same edge every other row.....**Times** 8 8 8 8

Work even until front measures.....**Inches** 20 20½ 21 21½ from beginning ending at side edge.

Continued on Page 27



JERRY — The All Time Favorite

Materials Required:

AMERICAN THREAD COMPANY
 "DAWN" or "CLOVERLEAF" NYLON or
 "DAWN" SWEATER and SOCK YARN,
 { "SANFORIAN" WON'T SHRINK OUT OF FIT. }

Sizes	40	42	44	46	
Ozs.	13	13	14	15	BLACK
Ozs.	2	2	3	3	WHITE or colors of your choice.

Knitting Needles: 1 pair each No. 2 and No. 3
 4 stitch holders.
 6 Buttons

GAUGE:

8 stitches (sts) = 1 inch 12 rows = 1 inch

Sizes: 40 42 44 46

BACK: With Black and No. 3 needles cast on.....**Sts** 170 176 182 188
 Work in stockinette st knit (K) 1 row, purl (P) 1 row for**Inch** ¾ ¾ 1 1

ending with a K row.
 K next row to form hemline.
 Work even in stockinette st for**Inches** 15½ 16 16½ 17
 from the hemline or desired length to underarm ending with a P row.

SHAPE RAGLAN:

Next Row. K to within last 4 sts, slip (sl) 1, K 1, pass sl st over K st (p.s.s.o.), K 2.
Next Row. P to within last 4 sts, sl 1, P 1, p.s.s.o., P 2.
 Repeat last 2 rows until there are**Sts** 48 52 52 56
 for back of neck. Bind off loosely.

POCKET LININGS: (Make 2)

With Black and No. 3 needles cast on**Sts** 34 36 38 40
 Work in stockinette st for**Inches** 3½ 4 4½ 4½

ending with a P row for right front pocket and ending with a K row for left front pocket. Place each section on a stitch holder.

RIGHT FRONT: With Black and No. 3 needles cast on**Sts** 92 95 98 101

Work in stockinette st for**Inch** ¾ ¾ 1 1
 ending with a K row.

Sizes: 40 42 44 46

K across next row to form hemline, drop Black. Work is now at front edge. Attach White, work in pattern as follows:

1st Row. With White K 1, * with yarn in front, sl 1 st as if to P, K 1, repeat from * across row.

2nd Row. With White P across row, drop White.

3rd Row. * With Black in front, sl 1 as if to P, K 1, repeat from * across row, ending with sl 1.

4th Row. With Black P across row.

Repeat these 4 rows for pattern.

Work even in pattern until front measures**Inches** 4½ 5 5½ 5½
 from hemline ending at front edge.

Work**Sts** 32 33 34 35
 then work and sl the next**Sts** 34 36 38 40

on a stitch holder (to be worked later for top band of pocket), work across remaining 26 sts.

Next Row. Keeping pattern even work 26 sts, slip sts of right pocket lining from holder and work in pattern across these sts and work to end of row. Work even until front measures same as back ending at armhole edge.

SHAPE RAGLAN AND NECK:

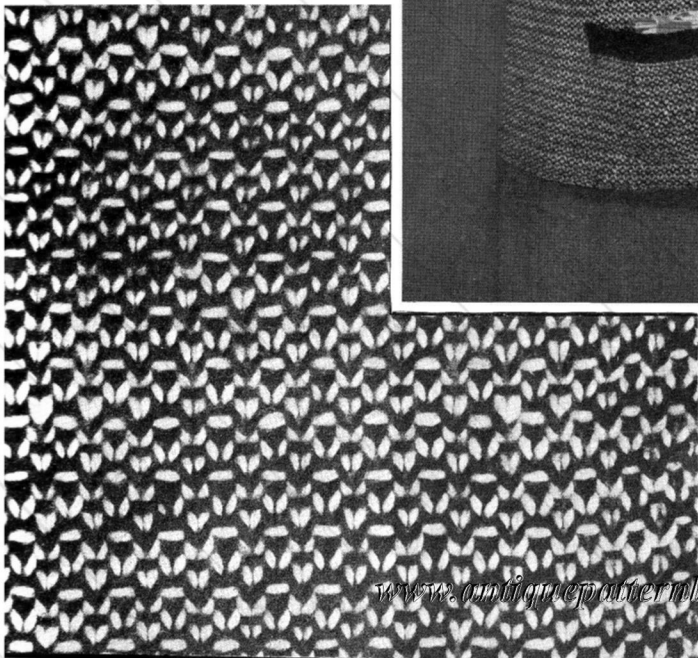
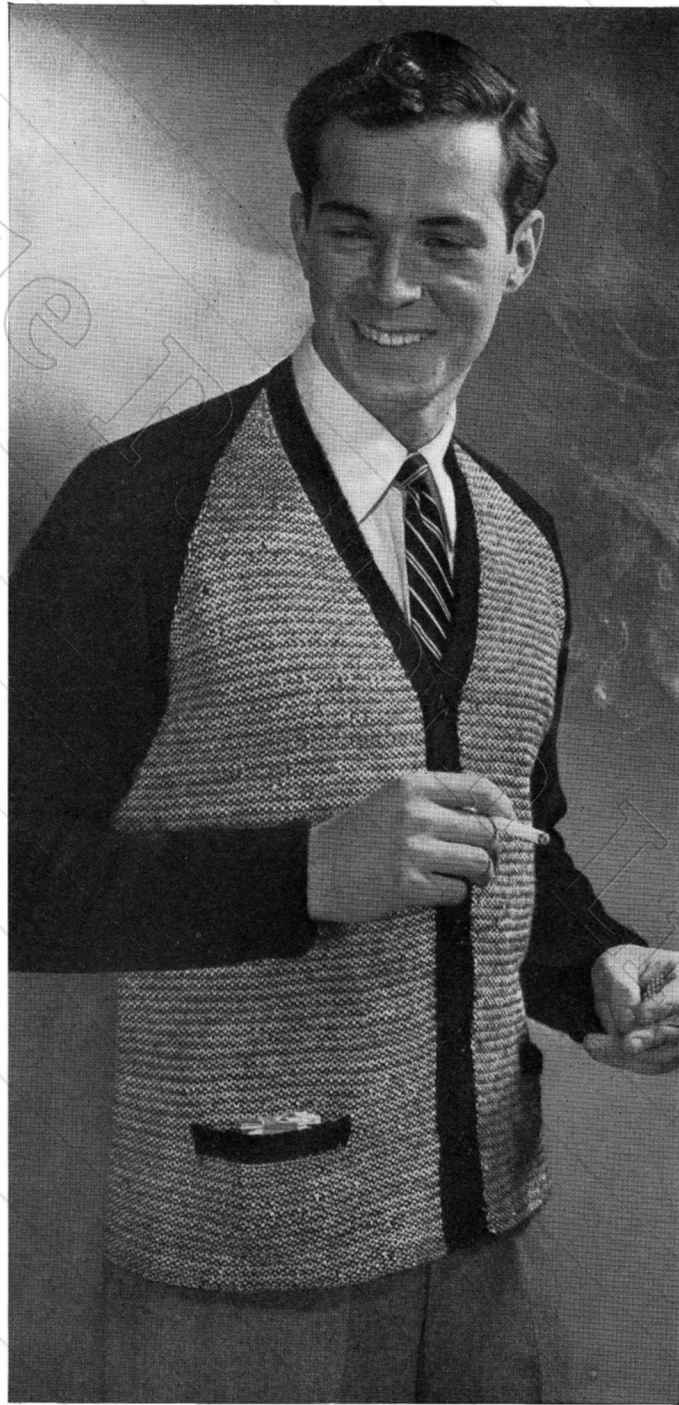
Decrease 1 st every other row at armhole edge, and at the same time decrease 1 st at front edge every 4th row until**Sts** 5 6 8 8
 remain, bind off.

LEFT FRONT: Work same as Right Front reversing the decreasing, shaping and position of pocket.

SLEEVES: With Black on No. 2 needles cast on**Sts** 72 74 76 80

Continued on Page 26

Antique
Library



REETA'S NEATER

Materials Required:

AMERICAN THREAD COMPANY
 "DAWN" or "CLOVERLEAF" NYLON, or
 { "DAWN" SWEATER AND SOCK YARN }
 { "SANFORLAN"—Won't Shrink Out Of Fit }

Sizes:	12	14	16	18	
Ozs.:	8	9	10	11	SCARLET or RED for Skirt
Ozs.:	8	9	9	10	SCARLET or RED for Blouse or color of your choice

Knitting Needles: 1 pr. each No. 1 and No. 4,
 Circular knitting needles: No. 1 and No. 4
 Steel crochet hook: No. 2
 1¼ yds. grosgrain ribbon ⅝ inch wide. Elastic to fit
 around waist. 8 (8, 9, 9) buttons.

GAUGE:

Before blocking: 9 sts=1 inch 10 pattern rows=1 inch
 When blocked: 7 sts=1 inch 10 pattern rows=1 inch

Blouse

Sizes: 12 14 16 18

BACK: On No. 1 needles cast on stitches.....(**Sts**) 112 120 128 136
 Work in ribbing of Knit (K) 1, Purl (P) 1 for
**Inches** 2¾ 3 3¼ 3½
 increasing 7 sts evenly spaced on last row of ribbing. Change to No. 4 needles and work in pattern on

.....**Sts** 119 127 135 143

as follows: (Right side)

1st Row. * P 3, K 1, repeat from * across row ending with P 3.

2nd Row. * K 3, P 1, repeat from * across row ending with K 3.

3rd Row. Same as 1st row.

4th Row. Same as 2nd row.

5th Row. K 1, P 1, * K 3, P 1, repeat from * across row ending with K 1.

6th Row. P 1, K 1, * P 3, K 1, repeat from * across row ending with P 1.

7th Row. Same as 5th row.

8th Row. Same as 6th row. Repeat the last 8 rows for pattern until back measures.....**Inches** 11 11 11½ 12

from beginning or length desired.

Sizes: 12 14 16 18

SHAPE RAGLAN: Next Row.

Decrease 1 st at beginning and end of row, then decrease 1 st at beginning and end of every other row until
**Sts** 31 35 37 41
 remain, bind off.

LEFT FRONT: On No. 1 needles cast on.....**Sts** 66 70 74 78

and work in ribbing of K 1, P 1 for.....**Inches** 2¾ 3 3¼ 3½
 increasing 4 sts evenly spaced across last row of ribbing.....**Sts** 70 74 78 82

Change to No. 4 needles (wrong side), * K 1, P 1, repeat from * 3 times, K 1 (border), * K 3, P 1, repeat from * across row ending with K 1.

2nd Row. P 1, * K 1, P 3, repeat from * across row to within last 9 sts, * P 1, K 1, repeat from * 3 times, P 1 (border).

3rd Row. Same as 1st row.

4th Row. Same as 2nd row.

5th Row. K 1, * P 1, K 1, repeat from * 3 times (border), P 1, * K 1, P 3, repeat from * across row.

6th Row. * K 3, P 1, repeat from * to within last 10 sts, * K 1, P 1, repeat from * 4 times.

7th Row. Same as 5th row.

8th Row. Same as 6th row.

Repeat the last 8 rows always keeping 9 border sts in K 1, P 1 ribbing until front measures same as back to underarm ending at armhole side.

Next Row Start Raglan:

Decrease 1 st at armhole side every other row until work measures.....**Inches** 17¾ 18 18¼ 18½
 from beginning ending at front edge.

Next Row. Bind off.....**Sts** 12 14 14 16
 at neck edge, then decrease 1 st at neck and at side edge every other row until 2 sts remain, bind off.

Mark position for 8 (8, 9, 9) buttons evenly spaced placing 1st button $\frac{1}{2}$ inch from lower edge and last button 2nd row from neck edge.

RIGHT FRONT: Work ribbing same as Left Front working 1st button hole $\frac{1}{2}$ inch from lower edge.

BUTTONHOLE: Work 3 sts, bind off next 3 sts, work across remainder of row.

On next row cast on 3 sts over the bound off sts. Work buttonholes to correspond to markers up remainder of front.

1st Row of Pattern: (Wrong side) K 1, P 1, * K 3, P 1, repeat from * to within 9 border sts ending with K 3, * P 1, K 1, repeat from * 3 times, P 1.

2nd Row. * K 1, P 1, repeat from * 3 times, K 1, * P 3, K 1, repeat from * across row ending with P 1.

3rd Row. Same as 1st row.

4th Row. Same as 2nd row.

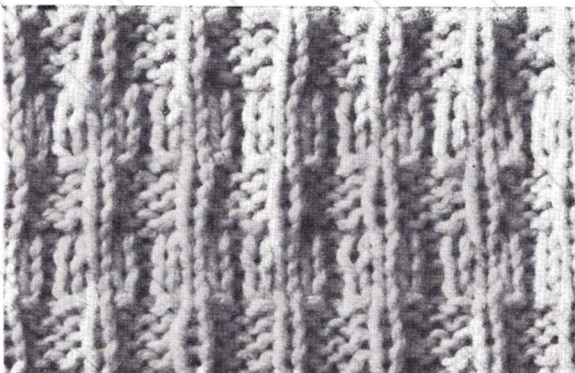
5th Row. * P 3, K 1, repeat from * across row to within 9 border sts ending with P 1, * P 1, K 1, repeat from * 3 times, P 1.

6th Row. * K 1, P 1, repeat from * 3 times, K 2, P 1, * K 3, P 1, repeat from * across row ending with K 3.

7th Row. Same as 5th row.

8th Row. Same as 6th row. Repeat last 8 rows for pattern. Work even in pattern same as Left Front and shape raglan and neck in same manner as Left Front.

Continued on Page 18



REETA

KATHERINE—

Queen of Stoles

Continued from Page 17

Sizes: 12 14 16 18

SLEEVES: On No. 1 needles cast on.....**Sts** 68 72 74 76 and work in ribbing of K 1, P 1 for.....**Inches** 1¾ 2 2¼ 2½ increasing.....**Sts** 3 3 5 7 in last row of ribbing.

Change to No. 4 needles and work in pattern same as back increasing 1 st at each end every 5th row until there are.....**Sts** 103 107 113 117 on needle. Work even in pattern until sleeve measures.....**Inches** 11¾ 12 12½ 13 from beginning.

Next Row Shape Raglan: Decrease 1 st at beginning and end of row, then decrease 1 st at beginning and end of every other row until.....**Sts** 15 15 15 15 remain, bind off.

COLLAR: With No. 1 needles cast on.....**Sts** 164 168 172 176 Work in ribbing of (K 1, P 1) increasing 1 st at beginning and end of every other row until collar measures.....**Inches** 4½ 4½ 4¾ 5 Bind off loosely in ribbing (outside edge of collar).

Crochet a row of single crochet (s c) on each side of collar and across outside edge. Do not work across neck edge.

FINISHING: Sew side and sleeve seams. Sew sleeves in position.

NECK BAND: With No. 1 needles pick up.....**Sts** 124 126 128 130 around neck and work in ribbing of (K 1, P 1) for ½ inch, bind off in ribbing. Sew collar in position leaving about ½ inch free at front.

Face front edges with ribbon. Finish buttonholes. Sew buttons in position.

Skirt Directions on Page 30

Materials Required:
AMERICAN THREAD COMPANY
"DAWN" BULKY YARN

22 ozs. White or color of your choice
Aluminum crochet hook size I

GAUGE: 2 pattern rows and 2 s c rows = 2¾ inches

STOLE: Chain (ch) 160 to measure about 70 inches, single crochet (s c) in 2nd stitch (st) from hook, 1 s c in each remaining st of ch, turn.

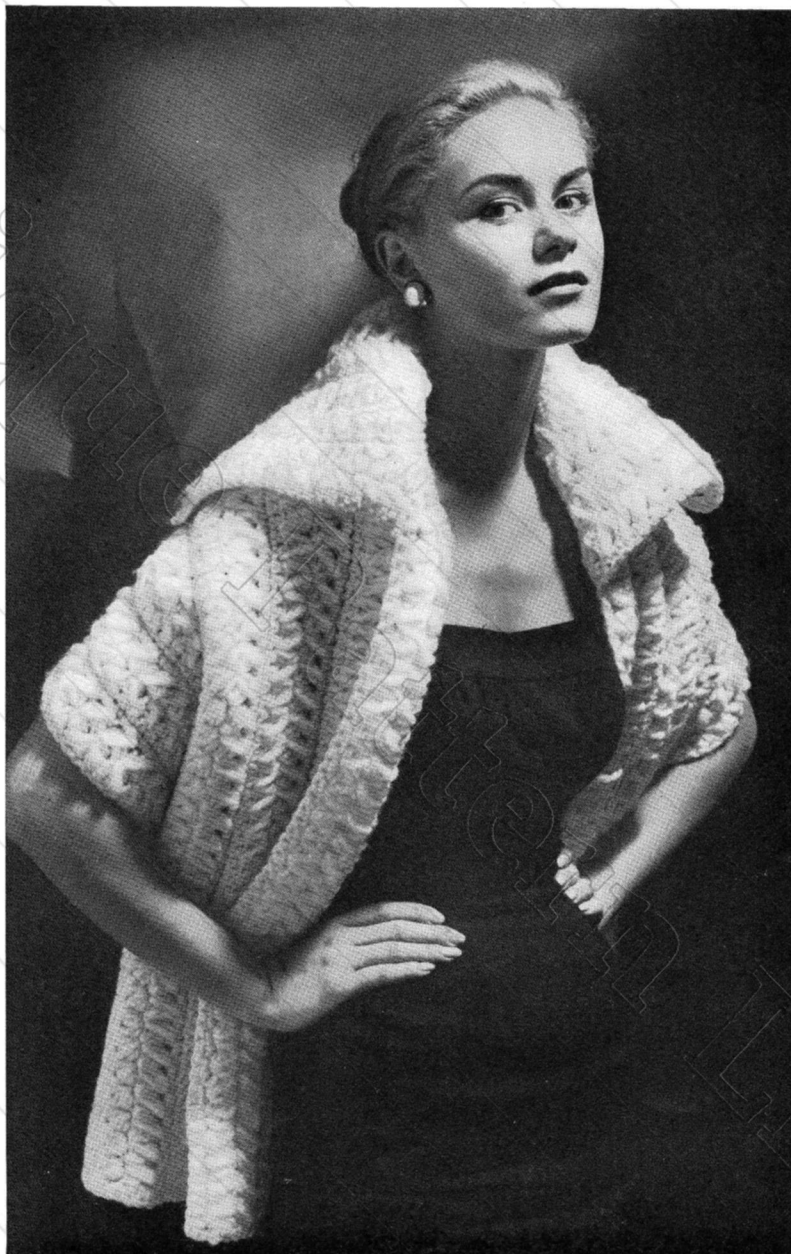
2nd Row. Ch 4, yarn over hook, insert hook in 1st s c, pull up a 1¼ inch loop, yarn over hook, skip next s c, insert hook in next st, pull up a loop the same length, yarn over and pull through all loops at one time (cluster), * ch 1, yarn over hook, insert in same space as last st, pull up a 1¼ inch loop, skip next s c, yarn over, insert hook in next s c, pull up a loop the same length, yarn over and work off all loops at one time, repeat from * across row (79 clusters), ch 1, double crochet (d c) in last s c, ch 4, turn.

3rd Row. Work a cluster by drawing up a 1¼ inch loop in top of each of the next 2 clusters, yarn over and work off all loops at one time, * ch 1, yarn over, draw up a 1¼ inch loop in same space as last st, yarn over, draw up a 1¼ inch loop in top of next cluster, yarn over and work off all loops at one time, repeat from * across row until 78 clusters have been completed, ch 1, draw up a 1¼ inch loop in same space as last st, skip 1 st of turning ch, draw up a 1¼ inch loop in next st, yarn over and work off all loops at one time, ch 1, d c in same space as last st, ch 1, turn.

4th Row. S c in 1st d c, * s c in top of next cluster, s c in next ch 1 space, repeat from * across row ending with s c in 1st st of turning ch, ch 1, turn.

5th Row. 1 s c in each s c, turn.
Repeat the last 4 rows until stole measures 19 inches from beginning ending with 4th row of pattern, cut yarn. Work a row of s c across each short end.

COLLAR: Ch 22, s c in 2nd st from hook, 1 s c in each remaining st of ch, ch 4, turn. Repeat the 2nd, 3rd, 4th and 5th rows of stole section until collar measures 23 inches from beginning ending with 4th row of pattern (10 clusters in each row, this is width of collar), cut yarn. Work a row of s c across 1 long edge of collar (outside edge). Sew collar to stole as illustrated.



A Crochet Quickie



ELIZABETH—

In a Coachman's Jacket

Materials Required:

AMERICAN THREAD COMPANY
"DAWN" KNITTING WORSTED or
"DAWN" NYLON OF KNITTING
WORSTED SIZE

38 (42, 46) ozs. Cocoa or Beige or color of your choice

Knitting Needle: 1 pr. No. 5

Steel crochet hook: No. 00

7 (7, 8) Buttons

GAUGE: Garter st: 4 sts = 1 inch

Ribbing: Before blocking 8 sts = 1 inch

After blocking 6 sts = 1 inch

Directions are given for size 10 to 12 (Small).

Sizes 12 to 14 (Medium) and 16 to 18 (Large) are given in parentheses.

BACK: With double strand of yarn cast on 80 (84, 88) stitches (sts).

Work in garter st, knit (K) each row for 2½ (2¾, 3) inches. Cut 1 strand of yarn, continue with single strand of yarn, work in ribbing of K 1, Purl (P) 1, increasing 40 (42, 44) sts evenly spaced on 1st row. Work even in ribbing until back measures 20 (21, 22) inches from beginning or length desired to underarm. Place a marker at each side of row for armholes, continue to work even on 120 (126, 132) sts until back measures 9 (9½, 10) inches from marker.

SHOULDERS: Bind off 14 (14, 15) sts at the beginning of next 4 rows.

Next 2 Rows: Bind off 14 (16, 16) sts at beginning of each row, then bind off remaining 36 (38, 40) sts for back of neck.

LEFT FRONT: With double strand of yarn, cast on 36 (38, 40) sts, work in garter st for 2½ (2¾, 3) inches, cut 1 strand of yarn.

With single strand of yarn working in ribbing of K 1, P 1 increase 21 (22, 23) sts evenly spaced on 1st row. Work even on 57 (60, 63) sts until front measures same as back to markers for armhole, place a marker.

NECK SHAPING: Decrease 1 st at neck edge every 3rd row and at the same time work armhole same as back armhole until there are 42 (44, 46) sts. Work even until armhole measures same as back armhole. Bind off shoulder same as back shoulders.

RIGHT FRONT: Work same as for Left Front reversing the shaping.

SLEEVES: With double strand of yarn cast on 30 (34, 38) sts. Work in garter st for 2½ inches, cut 1 strand of yarn. With single strand of yarn work in ribbing of K 1, P 1 increasing 30 (32, 34) sts evenly spaced on 1st row, then increase 1 st at beginning and end of every other row until there are 90 (96, 102) sts on needle. Work even until sleeve measures 17 (18, 19) inches from beginning, bind off in ribbing.

LEFT FRONT BAND: With double strand of yarn cast on 136 (140, 144) sts. Work even in garter st until band measures 3½ inches from beginning.

Next Row: Bind off 72 (76, 80) sts, work to end of row. Work 1 row even. This brings you to neck edge.

Next Row: Bind off 4 sts at beginning of row, then bind off 4 sts at neck edge every 4th row 8 times (28 sts). Work 4 rows even, bind off.

Mark position for 6 (6, 7) buttons evenly spaced in center of 3½ inch strip, placing 1st button ½ inch from lower edge, top button will be before beginning of short rows.

RIGHT FRONT BAND: Work same as Left Front Band working buttonholes in center of band to correspond to buttons.

BUTTONHOLES: Bind off 3 sts, then on the next row cast on 3 sts over the bound off sts.

POCKETS: Make 2. With double strand of yarn cast on 22 sts. Work in garter st for 1 inch, cut 1 strand of yarn. With single strand of yarn work in ribbing of K 1, P 1 increasing 33 sts evenly spaced on 1st row. Work even until pocket measures 7½ inches from beginning, bind off.

FINISHING: Block each section. Sew seams and sew sleeves in position. Sew widest end of bands together for collar. Sew shaped edge of band to fronts and around neck edge, having buttonholes on right front. Chain (ch) 7 for buttonloop and sew to right front edge as illustrated. Work a row of sc along entire sewn edge of band. Work 1 row of sc around sleeve edges and around the two sides and lower edge of pockets. Sew pockets and buttons in position.





ORLON-Velvet Smooth

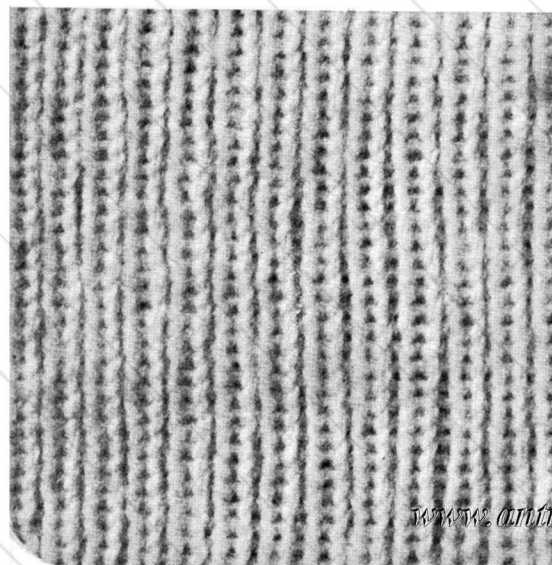
Materials Required:
AMERICAN THREAD COMPANY
"DAWN" ORLON HIGH BULK
FINGERING YARN

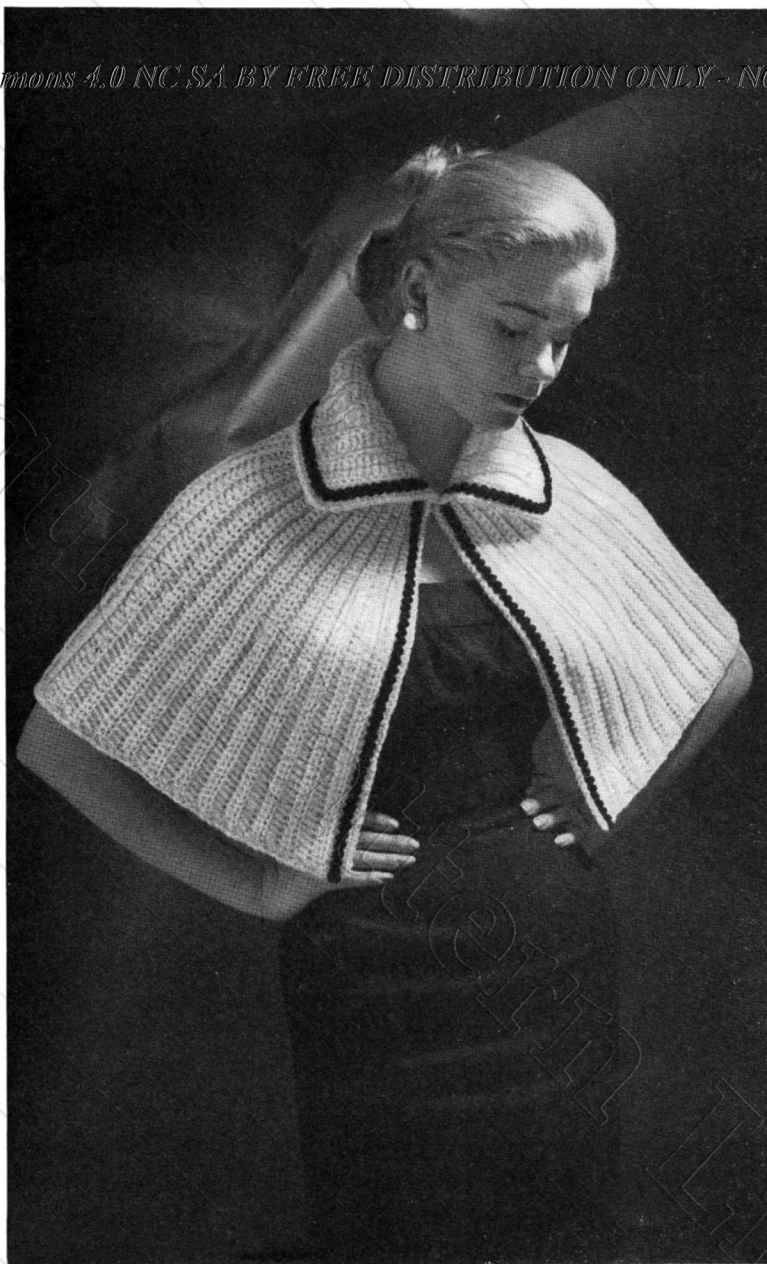
Sizes:	12	14	16	18	
Ozs.:	10	11	12	13	BUTTERCUP or color of your choice

Knitting Needles: 1 pr. each No. 1 and No. 2
Steel crochet hook No. 2
 $\frac{3}{4}$ yard $\frac{5}{8}$ inch velvet ribbon
 $\frac{3}{4}$ yard $\frac{7}{8}$ inch grosgrain ribbon
7 buttons

GAUGE:
Before blocking: 11 sts = 1 inch, 10 rows = 1 inch
When blocked: 9 sts = 1 inch, 10 rows = 1 inch

Continued on Page 30





Crochet
This One

THE "LITTLE" THROW

Materials Required:

AMERICAN THREAD COMPANY
"DAWN" KNITTING WORSTED or
"DAWN" NYLON OF KNITTING
WORSTED SIZE

11 ozs. White or color of your choice

Plastic crochet hook size 1

2 yds. of novelty braid

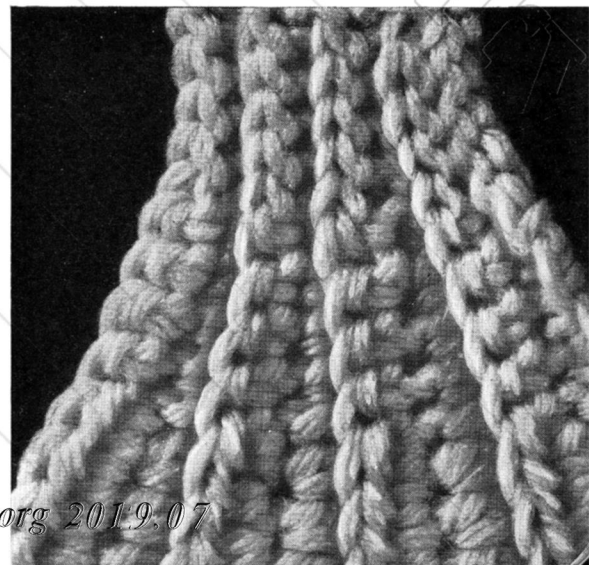
1 hook and eye

GAUGE BEFORE BLOCKING: 7 s d c = 2 inches

2 s d c rows = 1 inch

Chain (ch) 54, about 15½ inches, slip stitch (sl st) in
2nd st from hook, sl st in each of the next 4 sts of ch,
1 single crochet (s c) in each of the next 9 sts of ch,
1 short double crochet (s d c) in each remaining st

Continued on Page 26



JANE—That Tweed Look

SMALL, MEDIUM AND LARGE

Materials Required:

AMERICAN THREAD COMPANY

AUNT LYDIA'S HEAVY RUG YARN, Article 235
11 (12, 13) skeins Multi color No. 303 or color of
your choice, or

“DAWN” BULKY YARN

24 (26, 28) ozs. color of your choice

1 pr. knitting needles No. 10

Aluminum crochet hook size J

8 buttons

GAUGE: 3 sts = 1 inch, 4 rows = 1 inch

Sizes:	Small	Medium	Large
Width across back at underarm	21"	22"	23"
Width across front at underarm, buttoned	21"	22"	23"
Side seam	15"	15½"	16"
Sleeve Seam	13"	13½"	14"

Directions are given for Small size, Medium and Large sizes are given in brackets.

BACK: Cast on 67 (69, 71) stitches (sts) and work in ribbing of Knit (K) 1, Purl (P) 1 for 15 (15½, 16) inches.

SHAPE ARMHOLE: Decrease 1 st at beginning and end of next 9 (9, 9) rows. Work even on 49 (51, 53) sts until armhole measures 7½ (7½, 8) inches.

Next 2 Rows: SHAPE SHOULDERS: Bind off 8 sts at beginning of each row.

Next 2 Rows: Bind off 8 (8, 9) sts at beginning of each row. Bind off remaining 17 (19, 19) sts for back of neck.

LEFT FRONT: Cast on 43 (45, 47) sts. Work same as back to armhole ending at side edge.

ARMHOLE AND NECK SHAPING: Decrease 1 st at side edge every row 8 (8, 9) times and at same time decrease

1 st at front edge on each of the next 2 rows, then work next row even at front edge, continue decreasing in same manner at front edge until 16 (16, 17) sts remain. Work even if necessary until armhole measures same as back to shoulder ending at armhole edge.

SHOULDER: Bind off 8 sts at beginning of next row. Work 1 row even, bind off remaining sts.

RIGHT FRONT: Work same as Left Front until work measures 3 (3½, 4) inches.

Next Row: Work 3 sts, bind off next 2 sts for buttonhole, work 10 sts, bind off next 2 sts (11 sts between buttonholes), complete row. On next row cast on 2 sts over each of the 2 bound off sts (a set of buttonholes made).

Complete Front to correspond to Left Front reversing all shaping working 3 more sets of buttonholes evenly spaced.

SLEEVES: Cast on 33 (35, 37) sts, work in pattern for 3 inches.

Next Row: Increase 1 st at beginning and end of row, then increase 1 st at beginning and end of row every inch until there are 45 (47, 49) sts. Work even until sleeve measures 13 (13½, 14) inches.

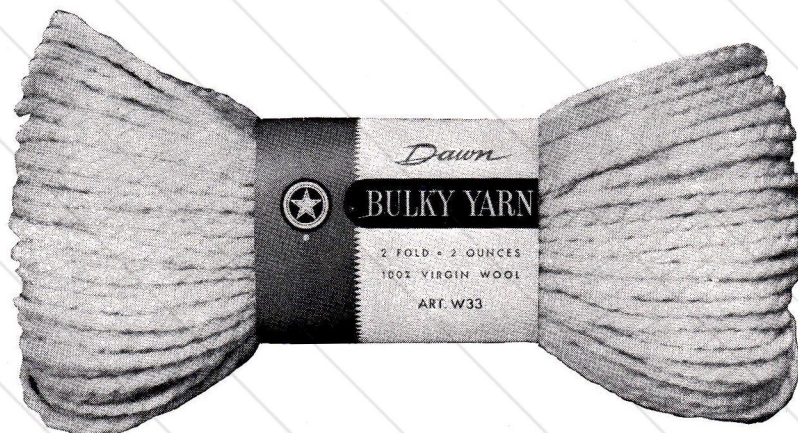
Decrease 1 st at beginning and end of next 8 (8, 9) rows.

Next 4 Rows: Bind off 3 sts at beginning of each row.

Next 2 Rows: Bind off 4 sts at beginning of each row. Bind off remaining sts.

COLLAR: Cast on 55 (57, 59) sts and work in pattern for 4½ inches, bind off loosely in pattern.

FINISHING: Block each section. Sew sides, shoulders and sleeves seams. Sew sleeves in position. Work a row of s c around entire Jacket working 3 s c in each corner at lower edge. Sew collar in position as illustrated. Work a row of s c around each sleeve. Sew buttons in position.





"LITTLE" THROW

Continued from Page 23

of ch (s d c: yarn over hook, insert in st, pull loop through, yarn over and work off all loops at one time), ch 2, turn.

2nd Row: Working in back loop of sts throughout, s d c in same space, 1 s d c in each of the next 39 sts, 1 s c in each of the next 9 sts, sl st in each of the next 5 sts, ch 1, turn.

3rd Row: Sl st in each of the 1st 5 sts, 1 s c in each of the next 9 s c, 1 s d c in each of the next 40 sts, ch 2, turn.

Repeat last 2 rows 49 times, then repeat the 2nd row once. Working across neck edge work 1 s c in each ridge (51 s c), 54 s c down side of cape, work in s c across lower edge and 54 s c up opposite side, join in 1st s c, cut yarn.

COLLAR: Ch 20, s d c in 3rd st from hook, 1 s d c in each remaining st of ch, ch 2, turn.

2nd Row: Working in back loop of sts throughout, s d c in same space, 1 s d c in each remaining s d c, ch 2, turn. Repeat last row 36 times, do not ch 2 at end of last row. Work a row of s c around 2 short sides and 1 long side, cut yarn. Sew remaining long side to neck edge. Sew braid around collar and to both front edges as illustrated. Sew hook and eye at neck opening.

Sizes: 40 42 44 46

increasing 1 st at both ends of row every 1/2 inch until there areSts 132 136 140 144

Work even until sleeve measures 19 inches or length desired ending with a P row.

SHAPING: Repeat the 2 rows of raglan shaping same as on back untilSts 12 16 16 18 remain for neck edge, bind off.

POCKET BAND: With Black on No. 3 needles slip pocket sts from holder and work in ribbing of K 1, P 1 for 3/4 inch ending on right side, K across row for ridge, continue in ribbing for 3/4 inch, bind off. Turn in on ridge and sew free ends and pocket lining in position.

FINISHING: Block each section. Sew seams and sew sleeves in position. Turn under at hemline and sew in position.

CARDIGAN BAND: On No. 1 needles, cast on 9 sts and work 2 sts in each st (18 sts).

2nd Row. K 1 inserting needle in back of st, * yarn forward in front of needle and sl next st as if in purling, yarn back of needle, K 1 st inserting needle in the usual way, repeat from * to end of row ending row with sl st. Repeat 2nd row for 1/2 inch, then make buttonhole as follows: work the 1st 6 sts, * K 1, sl the st made before the last st on right hand needle over the last st, sl 1 st, pass the st made before the sl st over the sl st and repeat from * 3 times, work to end of row.

Next Row. Cast on 4 sts over the bound off sts and in the next row K 2 sts in each of the 4 cast on sts (18 sts on needle).

Make 5 more buttonholes even spaced placing last buttonhole at shaping of left front neck edge. Work even until band is long enough to go around neck and other front. Bind off as follows: K the 1st 2 sts together, K the next 2 sts together, * sl 1st st on right hand needle over 2nd st, K the next 2 sts together, repeat from * across row, cut yarn.

Sew band in place, sew buttons in position.

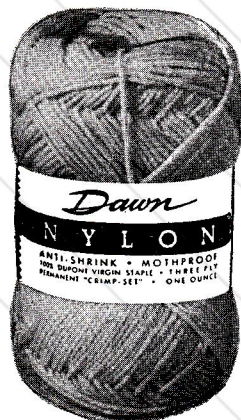
JERRY

Continued from Page 14

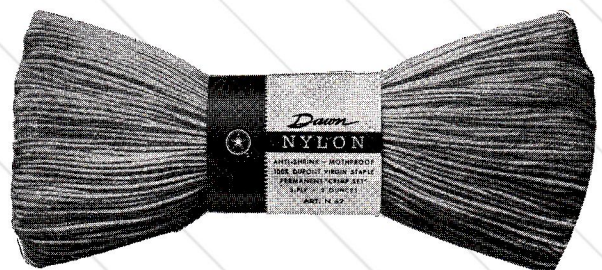
Sizes: 40 42 44 46

Work in ribbing of K 1, P 1 forInches 3 3 3 1/2 3 1/2 increasingSts 10 10 12 12 evenly spaced on last row of ribbing.

Change to No. 3 needles and work in stockinette st,



1 Ounce Balls



2 Ounce Skeins

NELL

Continued from Page 13

	Sizes:	12	14	16	18
Bind off.....	Sts	10	11	12	13
every other row.....	Times	6	6	6	6
Mark position for.....	Buttons	7	7	8	8

placing 1st marker 1 inch from bottom and last marker 1/2 inch from top.

RIGHT FRONT: Work same as Left Front, reversing the shaping and working buttonholes to correspond to markers.

BUTTONHOLES: Starting at front edge work across 6 sts, bind off 3 sts, work in pattern to end of row.

Next Row. Cast on 3 sts over bound off sts on previous row.

POCKETS: Cast on.....	Sts	32	32	32	32
Work even in stockinette st for.....	Rows	12	12	12	12

Bind off.
Crochet a row of sl sts across lower edge of pocket. Work another pocket in same manner.

Sew side and shoulder seams. Work a row of single crochet (s c) around lower edge of Cardigan.

FRONT NECK BAND:

Pick up.....	Sts	108	114	120	126
--------------	------------	-----	-----	-----	-----

around neck. Work in ribbing (K 1, P 1) for 1 inch. Bind off loosely in ribbing.

PLEATED TRIM FOR

POCKETS: Cast on.....	Sts	70	70	70	70
and work in Pleated Pattern for.....	Rows	6	6	6	6

PLEATED TRIM FOR SLEEVES:

Cast on.....	Sts	168	182	182	196
--------------	------------	-----	-----	-----	-----

and work same as for pockets.

PLEATED PATTERN FOR RIGHT FRONT AND NECK:

Cast on.....	Sts	476	490	504	518
--------------	------------	-----	-----	-----	-----

and work in Pleated Pattern for.....**Rows** 6 6 6 6

Bind off loosely in pattern. Sew pleated trim as illustrated on pockets, sleeves, around neck and right front. Sew pockets in position at lower edge of Cardigan. Sew velvet ribbon around sleeves, pockets and front of Cardigan as illustrated. Sew ribbon underneath on wrong side in same manner. Sew buttons in position. Sew 2 snap fasteners at top and lower edge of front for secure closing.

SUNNY

Continued from Page 3

Next Row: Work in pattern decreasing 1 st at beginning and end of row, bind off.

Block each section. Sew seams and sew sleeves in position.

NECK BAND: With No. 4 needles and right side of work toward you pick up and K 63 (67, 71) sts across neck edge and work in ribbing of K 1, P 1 for 1 1/2 inches, bind off.

LEFT FRONT BAND: Attach yarn at neck edge, work a row of sl sts down front edge, ch 1, turn.

Next 3 Rows: 1 s c in each st, ch 1, turn.

Next Row: 1 sl st in each st, cut yarn.

Mark position for 8 buttons evenly spaced, having 1st marker 1 inch from neck edge and last marker 1 1/2 inches from lower edge.

RIGHT FRONT BAND: Attach yarn at lower edge, work a row of sl sts up front edge, ch 1, turn.

Next 2 Rows: 1 s c in each st, ch 1, turn.

Next Row: Working in s c, work buttonholes to correspond to markers. For buttonholes: ch 2, skip 2 s c, s c in next s c.

Next Row: 1 sl st in each st.

Sew buttons in position.



LISA - The Exotic

Materials Required:

AMERICAN THREAD COMPANY
"DAWN" or "CLOVERLEAF" NYLON or
"DAWN" SOCK & SWEATER YARN

12 ozs. Scarlet
2 ozs. Sand

and

"STAR" RAYON CROCHET, Article 700

5 balls Buttercup.

2 balls each Red and Black.

Plastic crochet hook No. 4 or F.

With Scarlet chain (ch) 4, join to form a ring, ch 3 (counts as 1 double crochet (d c) in each row) and work 11 d c in ring, join in 3rd stitch (st) of ch.

2nd Row: Ch 3, 1 d c in next d c, * 2 d c, ch 2, 2 d c in next d c (corner), 1 d c in each of the next 2 d c, repeat from * twice, 2 d c, ch 2, 2 d c in next d c, join in 3rd st of ch.

3rd Row: Ch 3, 1 d c in each d c, 2 d c, ch 2, 2 d c in the ch 2 loop at each corner, join in 3rd st of ch.

Repeat last row 3 times, cut yarn (22 d c on each side).

7th Row: Attach Buttercup, ch 1 and work 1 s c in each d c, 1 single crochet (s c), ch 3, 1 s c in the ch 2 loop at each corner, join in ch 1.

8th Row: Ch 1, work 1 s c in each s c, 1 s c, ch 3, 1 s c in the ch 3 loop at each corner, cut thread.

9th Row: Attach Scarlet, work same as 3rd row, cut yarn.

10th and 11th Rows: Attach Buttercup, work same as 7th and 8th rows, cut thread.

12th Row: Attach Scarlet, work 1 d c in each s c, 2 d c, ch 2, 2 d c in the ch 3 loop at each corner.

13th to 16th Rows: Work same as 3rd row, cut yarn (54 d c on each side).

17th Row: Attach Buttercup, work same as 7th row, cut thread.

18th Row: Attach Black, work same as 8th row, cut thread.

19th to 23rd Rows: Attach Scarlet, work same as 12th to 16th rows, cut yarn.

24th and 25th Rows: Attach Buttercup, work same as 7th and 8th rows, cut thread.

26th Row: Attach Sand, ch 3 (counts as part of 1st cluster st), d c in same space, * ch 1, skip 1 st, 2 d c

cluster st in next st (2 d c cluster st: 2 d c in same space keeping last loop of each d c on hook, yarn over and pull through all loops at one time), repeat from * all around working 2 cluster sts with ch 2 between in the ch 3 loop at each corner, join in 3rd st of ch, cut yarn (43 cluster sts on each side).

27th Row: Attach Red Rayon, work same as 7th row, working 1 s c in each cluster st and 1 s c in each ch 1.

28th Row: Ch 3, 1 d c in each s c, working 2 d c, ch 2, 2 d c in the ch 3 loop at each corner, join.

29th Row: Work same as 7th row, cut thread.

30th Row: Attach Sand, work same as 26th row, cut yarn.

31st Row: Attach Buttercup, work same as 27th row.

32nd Row: Work same as 8th row, cut thread.

33rd to 37th Rows: Attach Scarlet, work same as 12th to 16th rows, cut yarn.

38th Row: Attach Buttercup, work same as 7th row, cut thread.

39th Row: Attach Black, work same as 8th row, cut thread.

40th Row: Attach Scarlet, work same as 26th row, cut yarn.

41st, 42nd and 43rd Rows: Attach Buttercup, work same as 27th, 28th and 29th rows, cut thread.

44th Row: Attach Scarlet, work same as 26th row, cut yarn.

45th Row: Attach Black, work same as 27th row, cut thread.

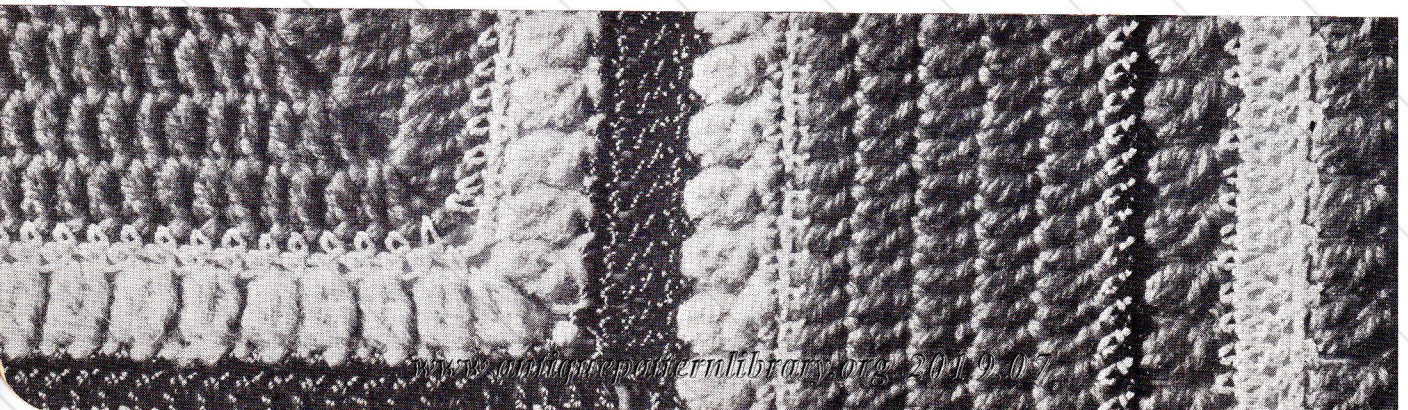
46th Row: Attach Buttercup, work same as 8th row, cut thread.

Repeat the 19th to 46th rows once.

75th Row: Attach Scarlet and work 1 s c in each s c, working 3 s c in the ch 3 loop at each corner, join, cut yarn.

FRINGE: Wind Scarlet over a 10 inch cardboard, cut loops at one end. Using 2 strands, double in half and knot fringe in every other st across each side and one in each of the 3 sts at each corner around entire shawl.

* Take half of one group of fringe and half of next group of fringe, knot together $\frac{3}{4}$ inch from 1st row of knots, repeat all around, then repeat from * for another row of knots. Trim fringe evenly.





Continued from Page 18

Continued from Page 22

Skirt
Sizes: 12 14 16 18

Starting at lower edge on No. 4 circular needle cast on.....**Sts** 352 364 376 392

join, being careful not to twist sts. Mark beginning of rounds. Work in pattern as follows: * P 3, K 1, repeat from * all around. Work 3 more rounds in same manner.

5th Round. K 1, P 1, * K 3, P 1, repeat from * all around ending with K 2.

Next 3 Rounds. Same as last round.

Next 4 Rounds. Same as 1st 4 rounds.

Work even in stockinette st (K each round) until work measures 5 inches from beginning.

Continue in stockinette st decreasing 4 sts evenly spaced on next round, then decrease 4 sts evenly spaced every 12th round 9 more times.

Work even on.....**Sts** 312 324 336 352
 until skirt measures.....**Inches** 18½ 19 19½ 19½
 or.....**Inches** 9½ 10½ 11 12

less than length desired to waist.

Decrease 4 sts every 4th round.....**Times** 24 26 28 30
**Sts** 216 220 224 232

Change to No. 1 circular needle and work in ribbing of (K 1, P 1) decreasing every 6th st all around.

Work 6 rounds even in ribbing, bind off.

Make a casing on wrong side at waist for elastic as follows: * s c in top of waist band, ch 8, skip about ½ inch space, s c in lower edge of band, ch 8, skip about ½ inch space, repeat from * all around, join, cut yarn. Lace elastic through casing and sew elastic together.

Sizes: 12 14 16 18

The entire Cardigan is worked in ribbing of Knit (K) 1, Purl (P) 1.

BACK: On No. 1 needles cast on.....**Stitches (Sts)** 124 132 142 150
 and work for.....**Inches** 4 4 4 4

Change to No. 2 needles, work across.....**Sts** 40 42 46 48

place a marker, work across.....**Sts** 44 48 50 54

place a second marker, work to end of row.

Next Row. Working in ribbing increase 1 st before and after each of the 2 markers (4 sts increased).

Keeping ribbing even increase 4 sts in same manner 7 more times every 8th row, then work even on.....**Sts** 156 164 174 182
 until back measures.....**Inches** 12 12 12½ 12½
 from beginning.

SHAPE ARMHOLES: Bind off.....**Sts** 10 11 12 13

at beginning of next 2 rows, then decrease 1 st each side every other row.....**Times** 8 8 9 10

Work even until armholes measures.....**Inches** 8 8 8½ 8½

from 1st decreasing point.

SHAPE SHOULDERS: Bind off.....**Sts** 8 8 8 9

at beginning of next.....**Rows** 10 6 2 10

Bind off.....**Sts** 9 9

at beginning of next.....**Rows** 4 8

Bind off remaining.....**Sts** 40 42 44 46

LEFT FRONT: On No. 1 needles cast on.....**Sts** 70 74 80 84

and work for.....**Inches** 4 4 4 4

Change to No. 2 needles, work across.....**Sts** 35 37 40 43

place a marker, work to end of row.

Next Row. Working in ribbing, increase 1 st before and after the marker (2 sts increased).

Keeping ribbing even increase 2 sts in same manner 7 more times every 8th row, then work on.....**Sts** 86 90 96 100
 even until front measures

Sizes: 12 14 16 18

same as back to underarm ending at armhole edge.

SHAPE ARMHOLE: Bind off
 **Sts** 10 11 12 12
 at beginning of next row, then decrease 1 st at armhole edge every other row
 **Times** 8 8 9 11
 Work even until armhole measures..... **Inches** 6 6 6¼ 6¼
 from 1st decreasing point ending at neck edge.

SHAPE NECK EDGE:
 Bind off..... **Sts** 11 12 12 12
 at beginning of row.
 Work 1 row even.
Next Row. Bind off..... **Sts** 7 7 7 8
 at beginning of row.
 Work 1 row even.
 Bind off 2 sts at neck edge every other row..... **Times** 5 5 6 6
 Work even until armhole measures same as back armholes.
 Bind off shoulders same as back shoulders.

Notation: The right front will be 5 sts less than left front, allowing for crochet band to be worked later.

RIGHT FRONT: On No. 1 needles cast on..... **Sts** 65 69 75 79
 work for..... **Inches** 4 4 4 4
 ending at side edge.
 Change to No. 2 needles, work across..... **Sts** 35 37 40 43
 place a marker, work to end of row.
 Work same as Left Front to neck edge shaping, ending at neck edge.
Next Row. Bind off..... **Sts** 6 7 7 7
 at neck edge.
 Finish same as Left Front.

SLEEVES: On No. 1 needles cast on..... **Sts** 70 74 80 84
 work for..... **Inches** 2 2 2 2
 Change to No. 2 needles increasing 1 st each side every 6th row until there are... **Sts** 110 114 120 124
 Work even until sleeve measures..... **Inches** 17½ 17½ 18 18
 or length desired from be-

Sizes: 12 14 16 18

ginning.
 Bind off **Sts** 10 10 10 10
 at beginning of each of the next 2 rows. Decrease 1 st on each side every other row until **Sts** 48 50 52 54
 remain. Bind off 3 sts at beginning of next 8 rows.
 Bind off remaining..... **Sts** 24 26 28 30
 Sew seams and sew sleeves in position.

NECK BAND: With No. 1 needles and right side of work toward you, pick up and K..... **Sts** 108 112 114 118
 around neck edge.
 Work in ribbing of K 1, P 1 for..... **Inch** ¾ ¾ ¾ ¾
 bind off in ribbing.
 With right side of work toward you attach yarn at left neck edge and work a row of s c down front edge.
 Mark position for 7 buttons evenly spaced on Left Front placing 1st marker ½ inch from lower edge and last marker ¾ inch from neck edge.

RIGHT FRONT BAND: With wrong side of work toward you attach yarn at neck edge, work a row of single crochet (s c) down front, chain (ch) 1, turn.
Next Row. Work 1 s c in each s c working buttonholes to correspond to markers, ch 1, turn.

BUTTONHOLES: Ch 3, skip 3 s c, s c in next s c.
Next Row. 1 s c in each s c and in each st of ch, ch 1, turn.
Next Row. 1 s c in each s c, cut yarn.
 Face Left Front with grosgrain ribbon. Sew velvet ribbon in position as illustrated making buttonholes to match underneath buttonholes.
 Sew buttons in position.

Fashions

*Knitted
Crocheted...*



...
SWEATERS
DRESSES
STOLES
CAPES