

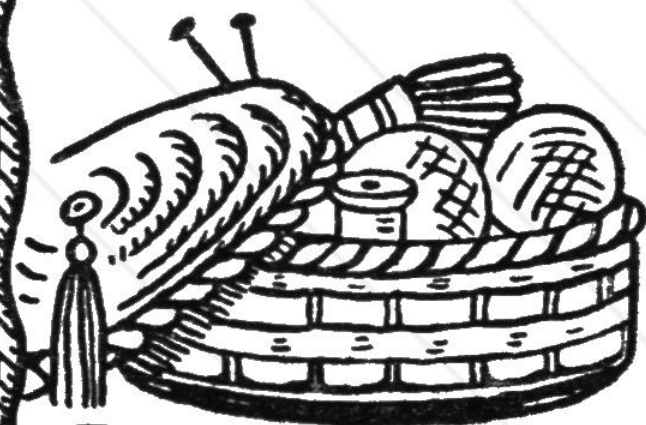
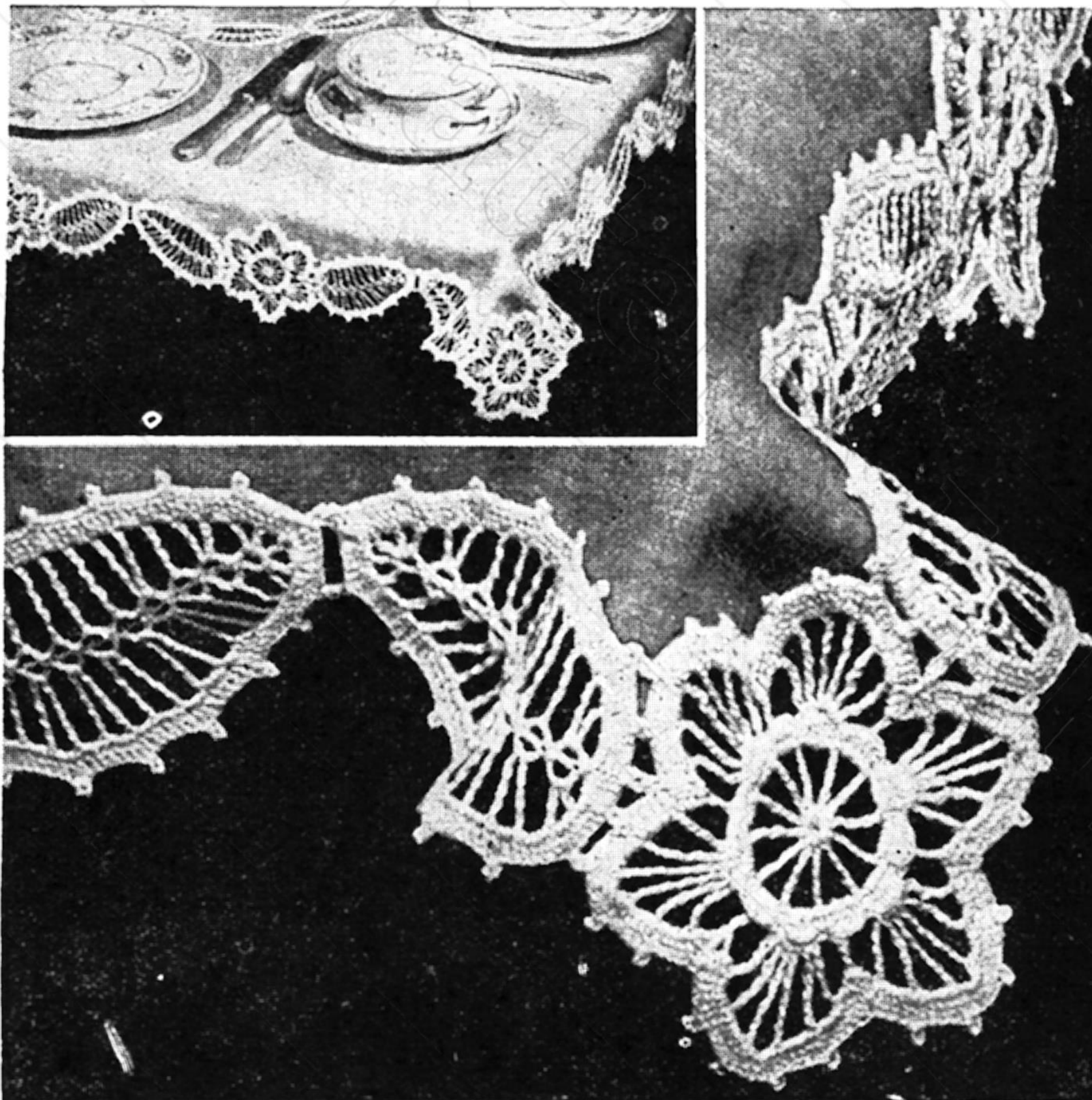
The Work Basket

HOME AND NEEDLECRAFT
For PLEASURE and PROFIT

VOLUME 12

February 2-1937

NUMBER 5



**IDEAS for the Bazaar, the Home,
Gifts and Sparetime Money-makers
— with Many Inexpensive, Easily
Made Articles that find a Ready Sale.**

TEA ROSE CARD TABLE COVER

Here is a lovely card table cover you will take pride in using for small luncheons, afternoon teas, or for dessert after bridge. For the table cover you will need a 33 inch square of linen, in white or a color. If Lily Sil-Tone is used for the crocheting, 6 balls will be required for the sprays. If Daisy Mercerized Crochet Cotton is used, 2 skeins of size 30 thread will be needed. Use a size 10 crochet hook.

ROSE—Rnd I: Make a ch (chain) of 7, sl st (slip stitch) in first st to form ring. Ch 10, dtr (double treble crochet: thread over hook 3 times and work off 4 pairs of stitches) in ring, (ch 3, dtr in ring) 10 times, ch 3, sl st in 7th st of beginning ch.

Rnd 2: Ch 1, into next 3-ch, * (1 sc—single crochet—ch 2, 3 dc—double crochet—ch 2, sc), sc in dtr. Repeat from * around, sl st in first 1-ch. Rnd 3: (Ch 5, sc between next 2 shells) around.

Rnd 4: Ch 2, sc in next 5-ch loop, ch 3 for a dc, * ch 3, dtr in next 5-ch loop, (ch 3, tr tr—treble treble crochet: thread over hook 4 times and work off 5 pairs of sts) 4 times in same loop, ch 3, dtr in same loop, ch 3, dc in next 5-ch loop. Repeat from * around. Join final 3-ch to first 3-ch.

Rnd 5: Ch 3, (dc in next 3-ch, dc in dtr) worked off together in a cluster (cluster consists of 2 or more dc, tr, dtr, or tr tr gathered together at top in tight group. Hold last loop of each st on hook, then thread over and draw through all loops on hook at once), * 4 dc in next 3-ch, dc in tr tr, ch 4, sl st in last dc for a picot, 4 times, 4 dc in next 3-ch, (dc in dtr, dc in 3-ch, dc in dc, dc in 3-ch, dc in dtr) worked off into a cluster. Repeat from * around. End with a 2-dc-cluster, sl st in first cluster; fasten off.

LEAF—Row 1: (Ch 6, dc in 6th st from hook) 9 times, ch 8, sl st in 8th st from hook, sc under bar of next dc, ch 4, sl st at base of same dc) 9 times. Row 2: Ch 5, (dc, ch 2, tr) in next loop, ch 2, (dtr, ch 2, dtr) in next, * ch 2, (tr tr, ch 2, tr tr) in next

loop. Repeat from * 3 times. Ch 2, (dtr, ch 2, dtr) in next loop, ch 2, dtr in next, ch 2, tr in next, (ch 2, dc) 5 times in end loop, ch 2, (tr, ch 2, tr) in next loop up other side, ch 2, dtr in next, ch 2, (dtr, ch 2, dtr) in next, (ch 2, tr tr in next) 5 times, ch 2, (dtr, ch 2, tr) in next, ch 5, sl st in end st.

Row 3: Ch 3, 6 dc in next 5-ch, (dc in next st, 3 dc in next sp—space) twice, dc in dtr, dc in next sp, a 4-ch p, dc in same sp. Continue around with 2 dc in each sp, 1 dc in each st between, putting a 4-ch p in every 7th dc.

In tip end dc, make 3 dc, p, 2 dc. After 13th p, make 2 dc in next sp, dc in tr tr, 3 dc in next sp, dc in dtr, a p, 3 dc in next sp, dc in tr, 6 dc in end sp, sl st, ch 3, dc in first 3-ch; fasten off.

Tack stem between 2 petals on flower,, and sew to flower picots on each side. Make a second leaf through row 2. Turn over and make row 3, reversing the order of picots. Tack to opposite side of flower.

Make 16 sprays, 3 for each side, 4 in center of cloth. Make 4 sprays more for corners, but leave only 2 flower petals between leaf joinings. Make a cardboard pattern slightly larger than sprays. Mark around this on tissue paper. Stretch and pin each spray right-side-down on a tissue pattern, and steam and press dry through a cloth. Arrange sprays around edge of linen, pinning in place. Tack together where they meet. Working on right side, whip outside edge of sprays to linen. Turn work over, cut linen $\frac{1}{4}$ " from stitching, turn edge back next crochet and hem down on back or dc-row on edge of sprays.

Make four sprays for center. To place these, find exact center of cloth by folding linen into square and creasing at center. Then open and arrange sprays in an approximate circle, fitting leaf tips together. With a pencil and string, determine the point at which to draw a perfect circle in a very light pencil line, then baste sprays around circle. Whip

sprays down to linen on right side; turn and cut linen out from under sprays; turn edge of linen back and hem with tiny stitches, or use button-hole stitch; press linen smooth.

Napkin corners to match the table cover are easily crocheted in the same thread used for the sprays. About 8½ yards of thread are required for each corner.

CORNER—Rnd 1: Ch 4, sl st in first st to form ring. Ch 5, tr into ring, (ch 2, tr in ring) 10 times, ch

2, sl st in second st of beginning ch.

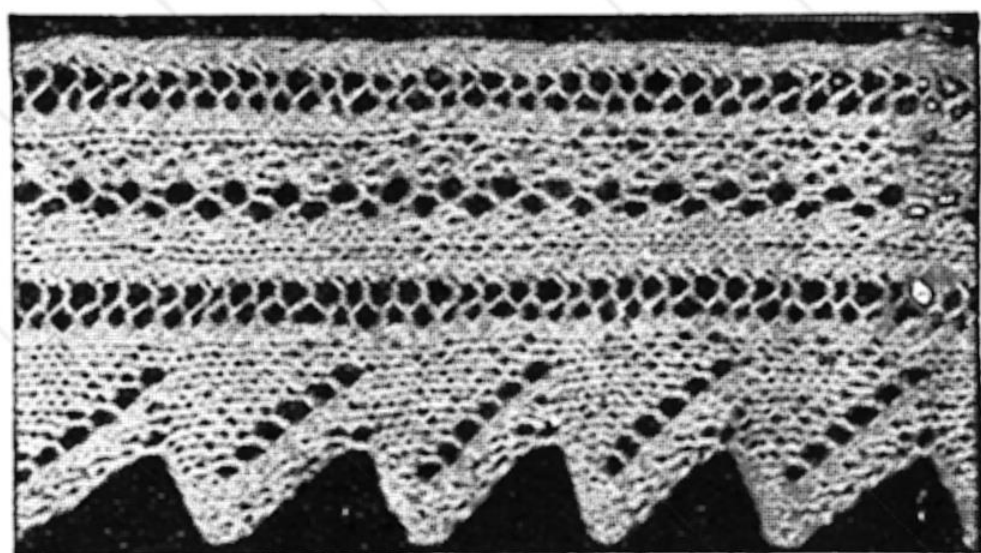
Rnd 2: Ch 1, into next 2-ch * sc, ch 2, 3 dc, ch 2, sc in tr. Repeat from * around, sl st in first 1-ch. Rnd 3: (Ch 4, sc between 2 shells) around.

Rnd 4: Ch 2, sc in next 4-ch loop, ch 2 for a dc, * ch 2, tr in next 4-ch loop, (ch 2, dtr) 4 times in same loop, ch 2, tr in same loop, ch 2, dc in next 4-ch loop. Repeat from * around. Join final 2-ch to first 2-ch; fasten off. Attach to napkin corner according to the directions given for cover.

KNITTED LACE

Using No. 16 double-point steel needles and No. 20 mercerized crochet cotton, the lace measures about 2 inches at the widest point.

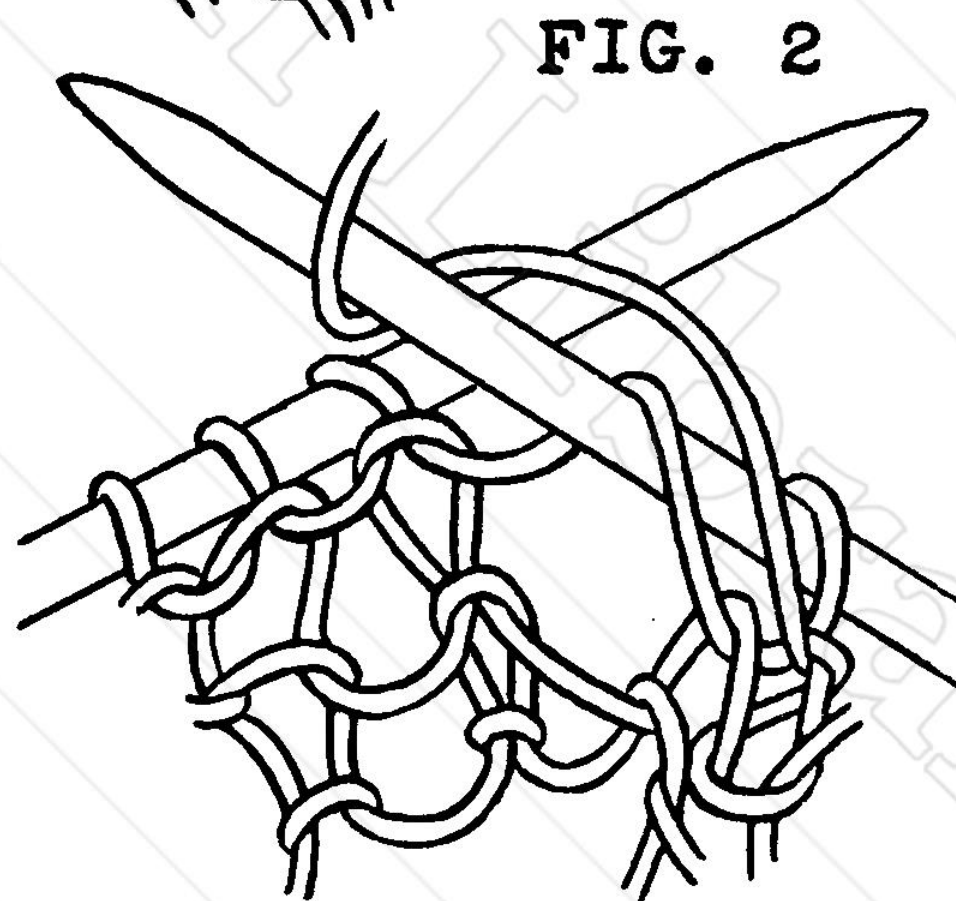
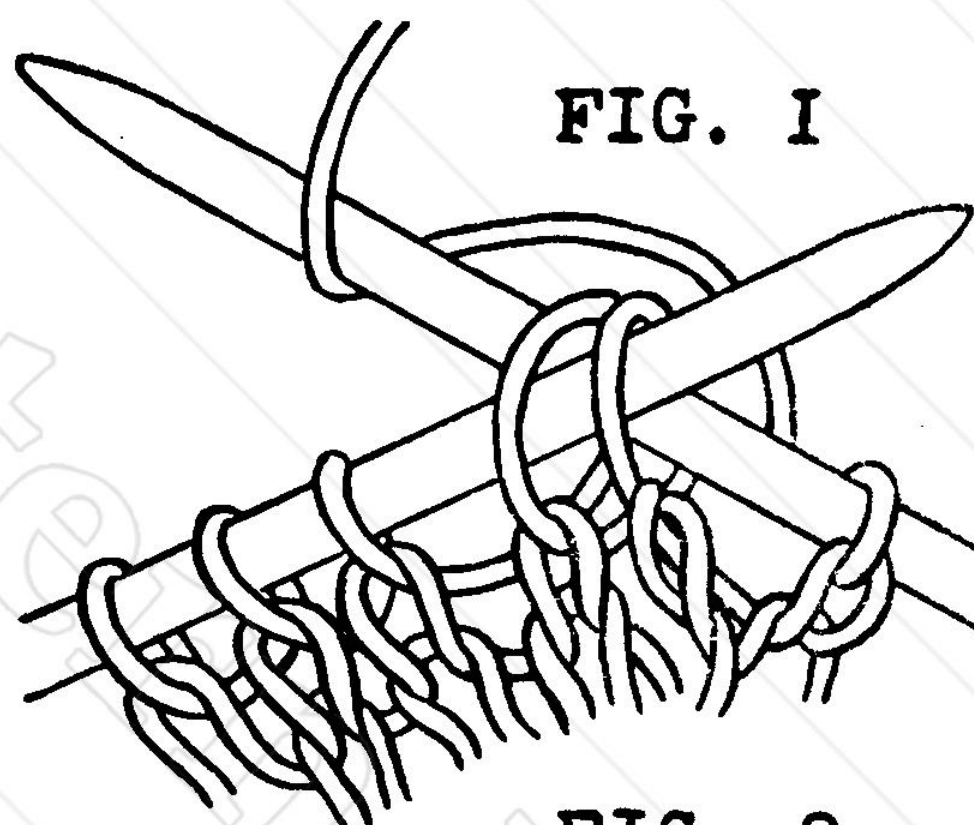
In this lace decreases (decs) are made by “k 2 tog” (knit 2 together). To do this, with thread to back for knitting, thrust right needle through next 2 sts (stitches) from right to left as shown in Figure 1; thread over needle and draw through both sts, thus making a dec of one st.



To purl 2 tog, with thread to front, thrust needle through 2 sts purlwise as though they were one st, and purl.

An “O” (over) is made by bringing thread under needle to front and back over right needle to back of work. If the over occurs in a purl row, carry thread over right needle to back and under needle to front again. In the next row “overs” are always counted as sts, and are knitted or purled as directed.

To slip a st knitwise or purlwise, thrust right needle through st as if to knit or purl as directed; do not make a new st but merely transfer



the present st to the right needle by slipping it off the left needle.

LACE: cast on 20 sts. Row 1: k 3, O, k 2 tog (see Fig. 1); k 1, k 2 tog, O, k 5; O, k 2 tog, k 1; O, k 2 tog, k 1, sl (slip) next (last) st purlwise. Row 2: purl the first st; make a purl inc (increase) by purling

(Continued on Page 6)

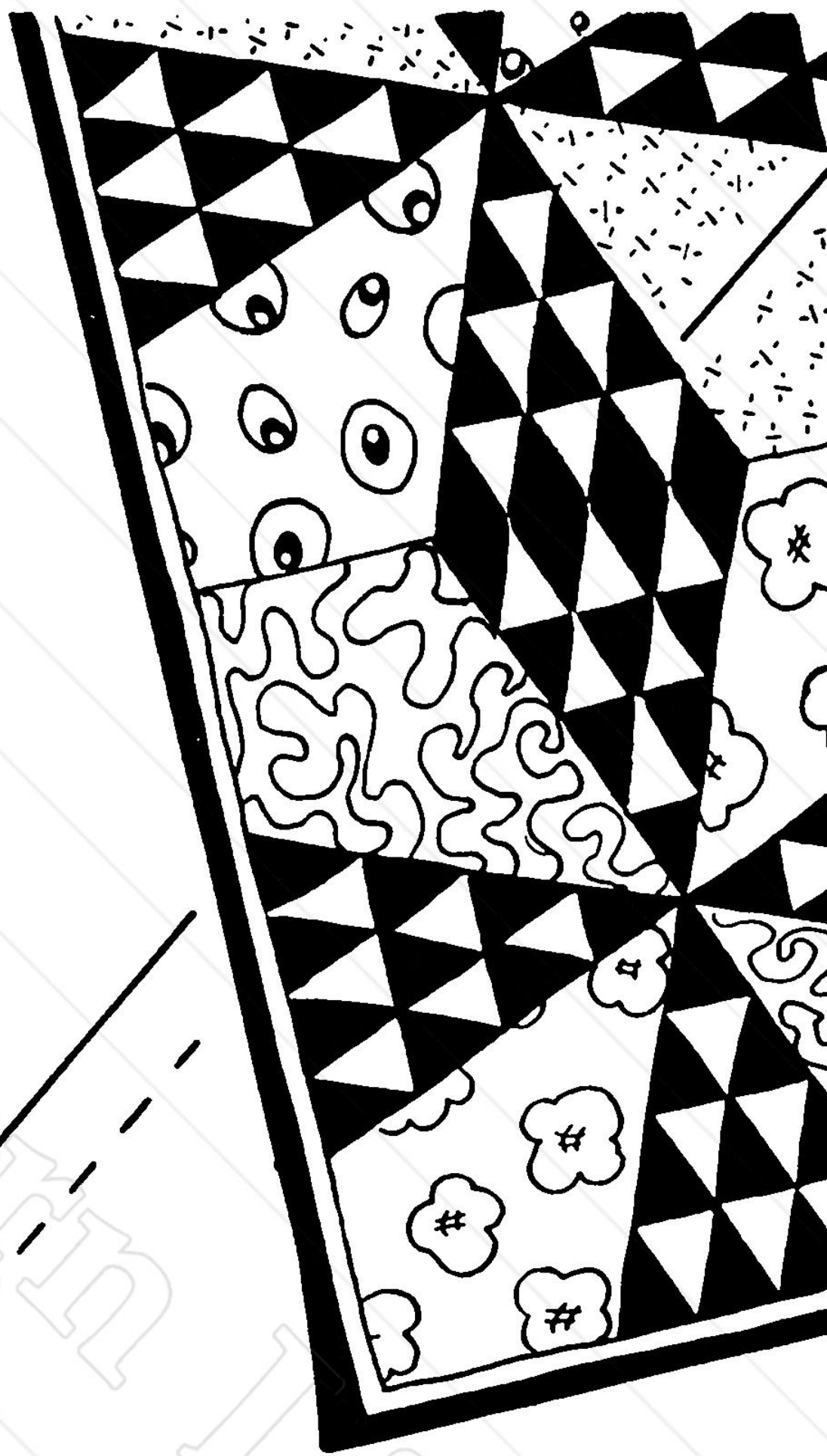
SHIPS A-SAILING QUILT

The finished quilt measures about 87 inches by 101½ inches. The required number of each piece is given on the pattern of that piece. You will need about 2⅔ yards for section A, about 4⅓ yards for section B, and about 7⅔ yards for section C. Set the blocks 6 across and 7 up and down.

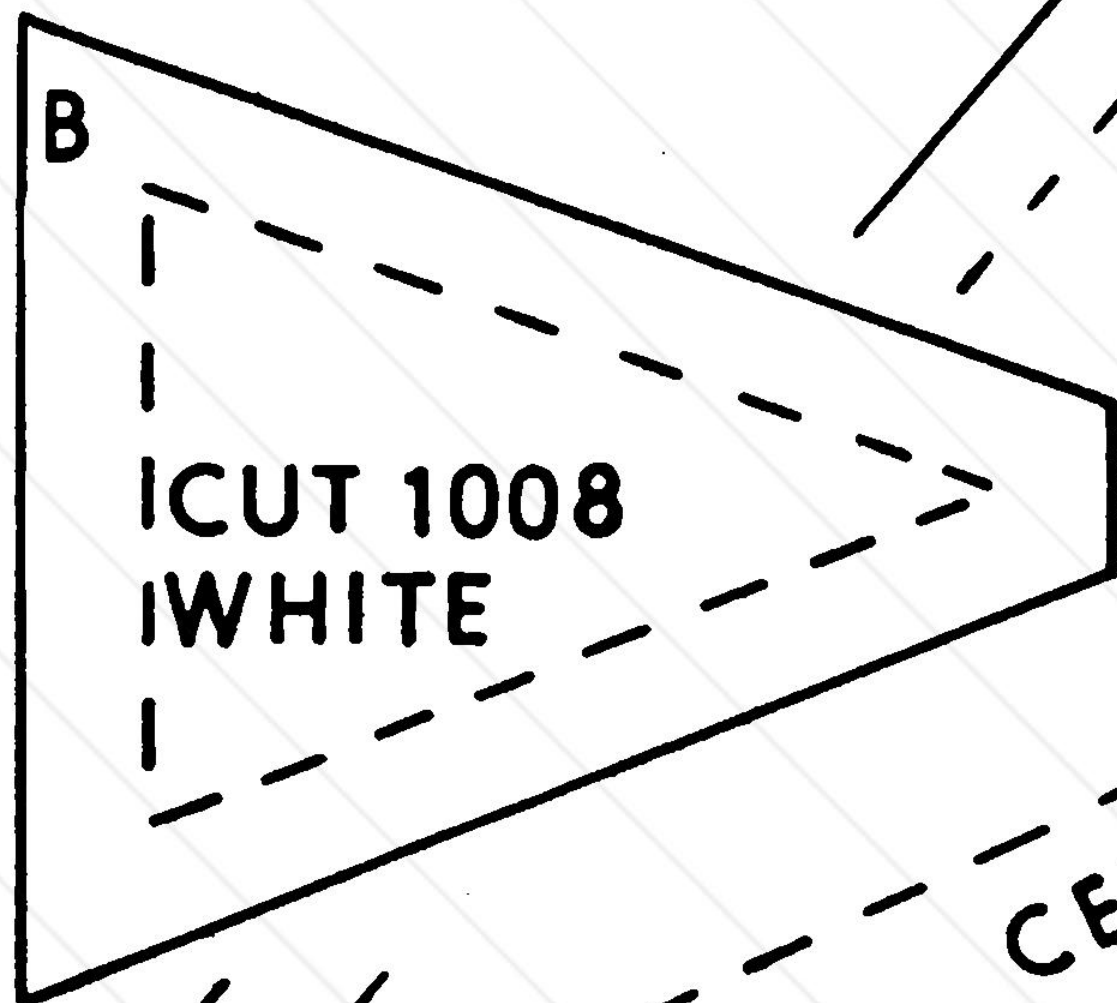
Trace the lines of this pattern on cardboard and make your cutting pattern from that. You will be able to duplicate the pieces should they become lost or torn.

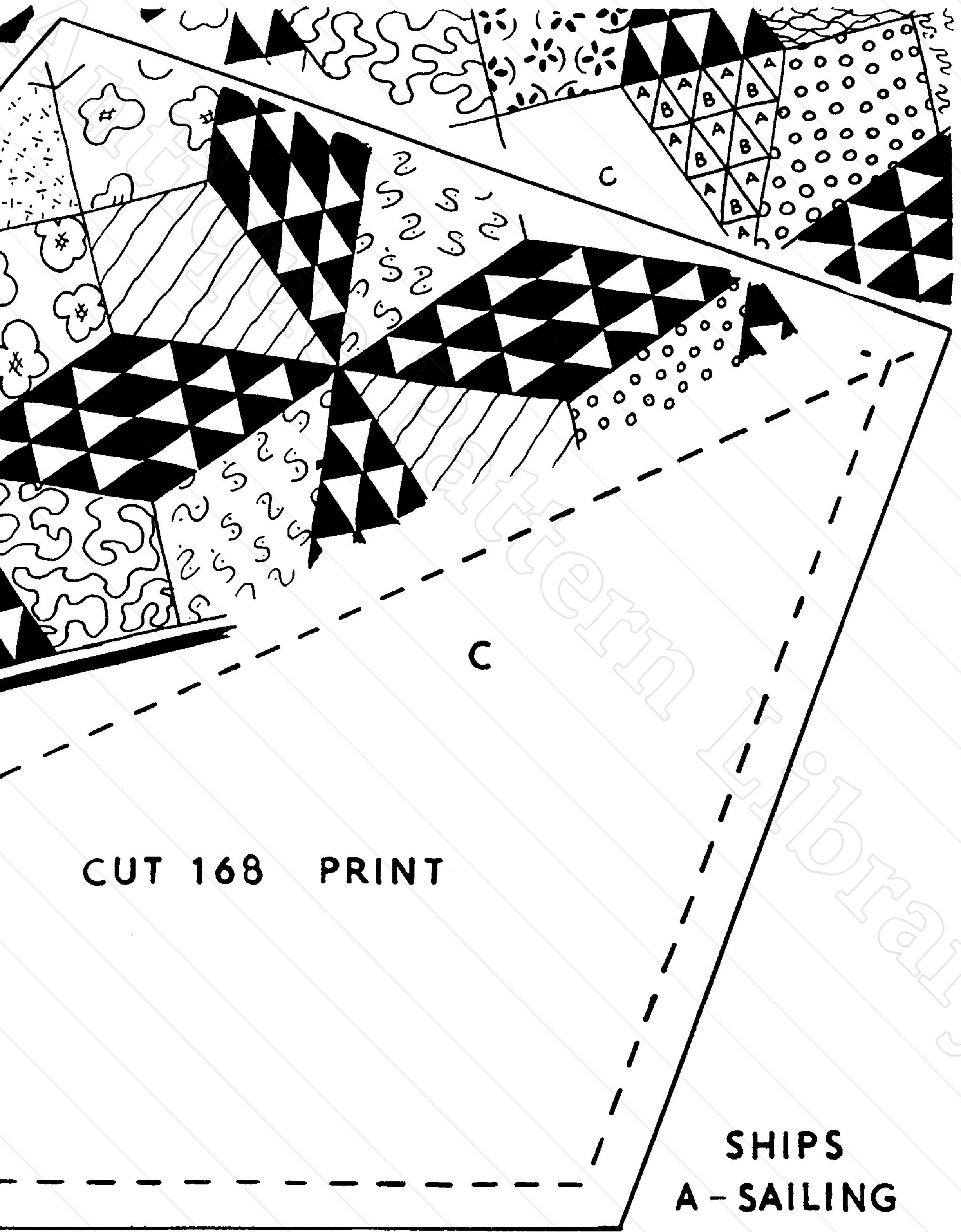
To piece the block, stitch A and B pieces together as shown in the sketch. Join section C between two sections of A and B that have been stitched together in half diamond shape. A and B sections would be nice in blue and yellow; C in a print or use anything you have in your rag bag.

Line and bind quilt. Quilt around the small diamonds; quilt your favorite design in the star.



CUT 1680 PRINT A





(Continued from Page 3)

one st between this and next st under the thread between sts as shown in Figure 2; p (purl) 6, O, p 2 tog, p 8, O, p 2 tog, sl last st knitwise.

Row 3: k 3, O, k 2 tog; k 3, O, k 2 tog, k 3; O, k 2 tog, k 2, O, k 2 tog, k 1, sl last st purlwise. Row 4: purl 1 st, a purl inc between this and next st as shown in Fig. 2; p 7, O, p 2 tog, p 8, O, p 2 tog, sl last st knitwise. Row 5: k 3, O, k 2 tog; k 1, k 2 tog, O, k 5; O, k 2 tog, k 3; O, k 2 tog, k 1, sl last st purlwise.

Row 6: p 1, a purl inc between this and next st; p 8, O, p 2 tog, p 8, O, p 2 tog, sl last st knitwise. Row 7: k 3, O, k 2 tog; k 3, O, k 2 tog, k 3; O, k 2 tog, k 4; O, k 2 tog, k 1, sl last st purlwise. Row 8: p 1, a purl inc between this and next st; p 9, O, p 2 tog, p 8, O, p 2 tog, sl last st knitwise.

Row 9: k 3, O, k 2 tog; k 1, k 2 tog, O, k 5; O, k 2 tog, k 5; O, k 2 tog, k 1, sl last st purlwise. Row 10: p 1, a purl inc between this and next st; p 10, O, p 2 tog, p 8, O, p 2 tog, sl last st knitwise. Row 11: k 3, O, k 2 tog; k 3, O, k 2 tog, k 3; O, k 2 tog, k 6; O, k 2 tog, k 1, sl last st purlwise.

Row 12: p 1, a purl inc between this and next st; p 11, O, p 2 tog, p 8, O, p 2 tog, sl last st knitwise. Row 13: k 3, O, k 2 tog; k 1, k 2 tog, O, k 5; O, k 2 tog, k 10, sl last st purlwise. Row 14: sl first st purlwise, bind off 6 sts purlwise for scallop. There

should now be one st on right needle, and 19 sts remaining on left needle; p 6, O, p 2 tog, p 8, O, p 2 tog, sl last st knitwise. This completes one scallop. Directions are given for the next scallop since it is necessary to change the order of sts through center in order to keep the center line of open-work in pattern.

Row 15: k 3, O, k 2 tog; k 3, O, k 2 tog, k 3; O, k 2 tog, k 1; O, k 2 tog, k 1, sl last st purlwise. Row 16: same as Row 2. Row 17: k 3, O, k 2 tog; k 1, k 2 tog, O, k 5; O, k 2 tog, k 2; O, k 2 tog, k 1, sl last st purlwise. Row 18: same as Row 4. Row 19: k 3, O, k 2 tog; k 3, O, k 2 tog, k 3; O, k 2 tog, k 3, O, k 2 tog, k 1, sl last st purlwise.

Row 20: same as Row 6. Row 21: k 3, O, k 2 tog; k 1, k 2 tog, O, k 5; O, k 2 tog, k 4; O, k 2 tog, k 1, sl last st purlwise. Row 22: same as Row 8. Row 23: k 3, O, k 2 tog; k 3, O, k 2 tog, k 3; O, k 2 tog, k 5; O, k 2 tog, k 1, sl last st purlwise. Row 24: same as Row 10.

Row 25: k 3, O, k 2 tog; k 1, k 2 tog, O, k 5; O, k 2 tog, k 6, O, k 2 tog, k 1, sl last st purlwise. Row 26: same as Row 12. Row 27: k 3, O, k 2 tog; k 3, O, k 2 tog, k 3; O, k 2 tog, k 10, sl last st purlwise. Row 28: same as Row 14.

Repeat Rows 1 through 28 for the length of lace desired, binding off on the row in which the point of scallop is bound off.

BOUQUET TO YOU

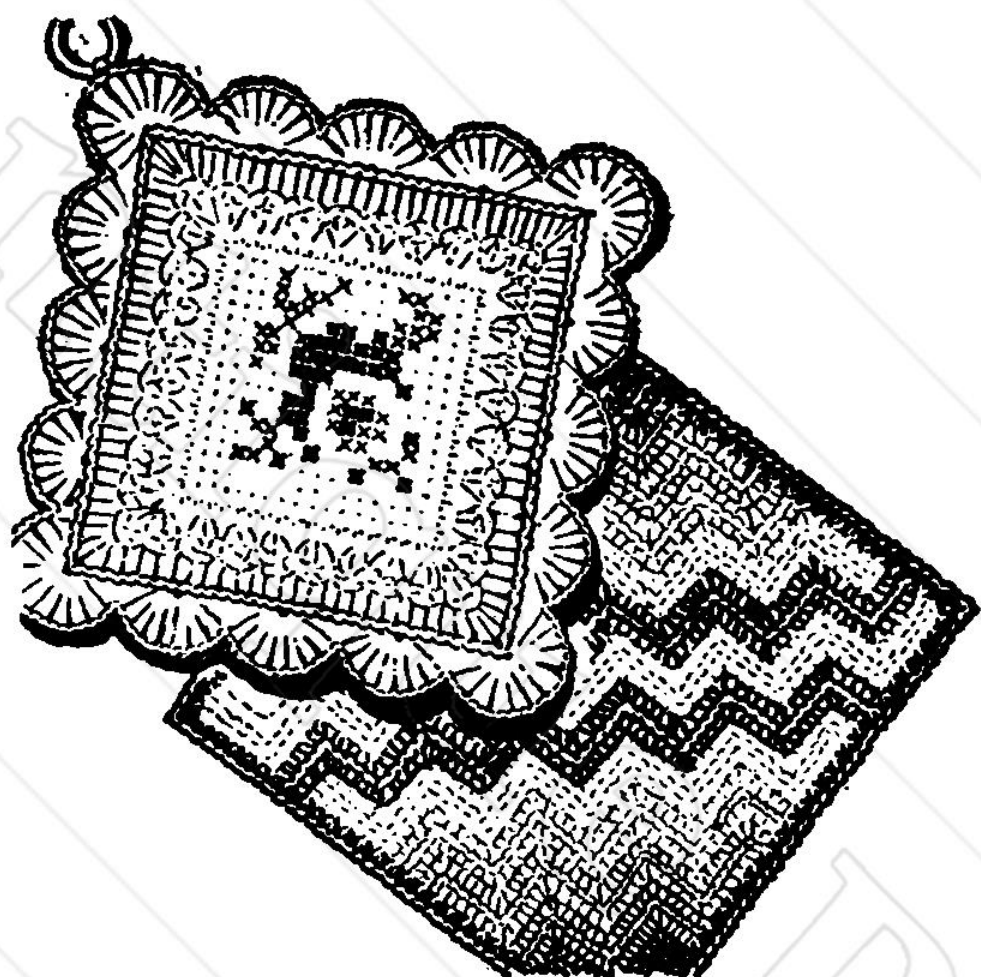
Give your special friends this pretty and useful crocheted pan holder with scalloped edge and cross stitch yarn embroidery. Use a size 0 crochet hook and a medium weight cotton rug yarn in cream, red, tea rose and medium green, or colors of your own choosing.

In cream (or light background color) ch (chain) 16; turn, sc (single crochet) in 2nd ch from hook and each ch across (15 sc). Ch 1, turn. Rows 2 to 15: Sc in each st (stitch) across, ch 1, turn. (15 sc).

Row 16: 2 sc in first sc, 13 sc across, 3 sc in end sc, 13 sc along side of

work, 3 sc in corner, 13 sc along beginning ch, 3 sc in corner, 13 sc along other side. Make 1 sc in same corner sc with first 2 sc, fasten and break off.

Row 17: Turn and sl st (slip stitch) in tea rose; * in corner st, holding last loop of each st on hook, make 2 dc (double crochet), yarn over hook and draw through 3 loops (a cluster made). Sc in same corner st, (cluster in next sc, sc in next sc) 8 times to next corner. Repeat from * around. Sl st in first cluster. Fasten and break off.



RAINBOW HUE

This bright pan holder is quickly crocheted of a medium weight cotton rug yarn in delft and light blue, orange, yellow, cream and red, or other colors to harmonize with your own kitchen. Use a size 0 crochet hook.

In delft blue, ch (chain) 10, 3 sc (single crochet) in 2nd ch from hook, sc in next 3 stitches, sk (skip) 1 st (stitch), sc in next 3 st, 3 sc in end st; ch 1, turn. Row 2: Working in back loops only throughout whole piece to make ribs, make 1 sc in first sc, 3 sc in next sc, 1 sc in each of next 3 sc, sk 2 sc (angle), sc in next 3 sc, 3 sc in next sc, * 1 sc in next sc. Row 3: Cut delft blue 2 inches long, pull light blue through loop on hook and tie 2 ends together in a hard (square) knot, close to work, letting ends hang. Turn, sk sc where light blue was joined, sc in next 2 sc, 3 sc in next (corner—a corner st is the middle sc of 3 sc in 1 st) sc, sc in 3 sc, sk 2 sc in angle, sc in next 3 sc, 3 sc in next (corner) sc, sc in last 2 sc.

Row 4: In light blue, make a ch of 5, turn first piece of work over to back, sc in first 3 sc, joining ch 5 to work, 3 sc in corner st, sc in next 3 sc, sk 2 sc in angle, sc in each of next 3 sc; 3 sc in corner st, sc in 3 sc * and cut 2 inches long. Row 5: Pull orange through loop for 1 ch, tie ends, ch 5, turn (there are 5 orange ch and 1 light blue), 3 sc in 2nd ch st, 3 sc on ch, sk last ch and next sc, * sc in next 3 sc, 3 sc in corner sc, sc in next 3 sc, ** sk 2 st in angle. Repeat from * to ** once. Skip last sc and first ch, 3 sc on ch, 3 sc in end ch st; ch 1, turn.

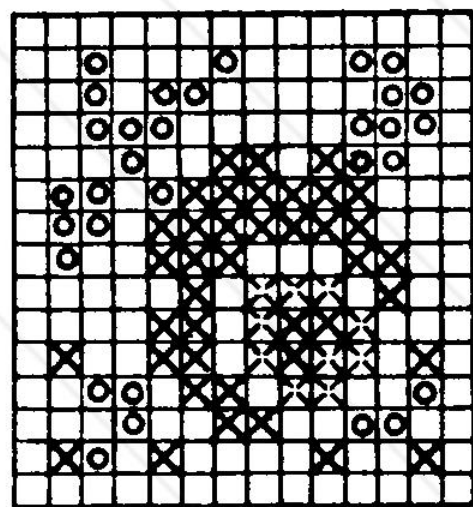
Row 6: Repeat row 2 to *. Continue across in same way, ending with 3 sc in next to last sc, and 1 sc in end sc. Cut 2 inches long. Row 7: Join yellow, tie ends, turn and work across with 1 sc in each sc, 3 sc in corners and sk 2 sc in angles. Cut 2 inches long. Row 8: In yellow, repeat row 4 to *. Complete row and cut 2 inches long. Row 9: In cream, work across same as row 5. Repeat row 6. Repeat row 7 and 8 in red. Row 13: Join cream, ch 5, turn, sk first st, 4 sc on ch, sk

Row 18: Turn, and sl st in cream in one corner cluster, ch 3, 2 dc in same st, * 1 dc in next sc, 1 dc in cluster. Repeat from * around, making 5 dc in each corner cluster. 2 dc in first corner, sl st in ch 3. Fasten and break off.

Row 19: Turn, 2 sc in tea rose in sl st, * sc in each st across, 3 dc in corner st. Repeat from * around, sc in first corner, sl st in first sc, ch 3, turn. Row 20: Make 4 dc in back loop of sl st, sk (skip) 2 sc, sc in both loops of next sc, * sk 2 sc, (7 dc in back loop of next sc, sk 2 sc, sc in both loops of next sc) 3 times, 9 dc in corner sc, sk 2 sc, sc in both loops of next sc. Repeat from * around, making 9 dc in each corner sc. Make 4 dc in first corner, sl st in first ch 3; fasten and break off.

EMBROIDERY:

Following chart, embroider the flower spray in cross st on center square, using one strand of yarn threaded to a large dull-pointed needle. Steam and press dry on back through a cloth. Line the back with material of harmonizing color and sew a bone ring to one corner.



Pink X
Red X
Green o

last ch and next sc, and work across as before, with 4 sc on end ch; ch 1, turn.

Row 14: 3 sc, sk 2 sc in angle and work across, ending with 3 sc; cut 2 inches long. Row 15: Join red, turn, 2 sc, sk 2 sc in angle and work across, ending with 2 sc; ch 1, turn. Row 16: Sk last 3 sc, sc in next 3 sc and work across to 4th sc from end, sl st (slip stitch) in end sc, turn. Row 17: Sk sl st and last 4 sc, cut and join cream and sc in cream in next 4 sc, sk 2 sc in angle * and work across to last angle, sk 2 sc in angle, sc in next 4

sc; ch 1, turn and repeat row 14. Repeat rows 15 and 16 in yellow. Repeat rows 17 and 14 in orange, and rows 15 and 16 in light blue. Repeat row 17 to * in delft, sc in next 4 sc. Ch 1, turn, 3 sc, sk 2 sc, 2 sc. Ch 1, turn, 2 sc, sk 2, 2 sc. Ch 1, turn, 1 sc, sk 2, sl st in end sc. Fasten off.

EDGE: 3 sc at one corner in delft blue, 1 sc in each st and row around, with 3 sc at corners. Work over ends dry on back through a cloth. Sew a left from each rib, covering them up. Join, and fasten off. Steam and press bone ring to one corner.

Dear Readers:

Soon after the first of the year **THE WORKBASKET** will be moving to its new and greatly enlarged building. Since we can do no printing during the process of moving, the March issue might possibly reach you a few days late. We hope not and we are going to do everything in our power to maintain our regular schedule.

THE WORKBASKET has grown by leaps and bounds since its first publication eleven years ago and every few years has found us enlarging our space.

The future issues of **THE WORKBASKET** will continue to bring you an exceptionally beautiful collection of patterns, designs and directions, which we hope you will find useful and unusual.

Sincerely,

Aurt Ellen

A HOBBY HOLIDAY FOR YOU

Like a trip to Bermuda, a hobby gives you a holiday all through the winter—a new world that meets you when your work is done.

To find a hobby—and to enjoy hobbies others follow, read **PROFITABLE HOBBIES** magazine. You'll find each month many fascinating new ideas with never-ending tours to new and different worlds. In each issue lie intriguing yarns telling, step-by-step, how you can be a part of the hobby holiday parade.

A year's subscription is \$3.00, but for a limited time the publisher is accepting special "get acquainted" orders that bring you four thrilling issues for only \$1.00. Send your order in TODAY.

Just slip \$1.00 in an envelope, add your name and address and mail to **PROFITABLE HOBBIES**, 5189 Westport Station, Kansas City 2, Missouri.

If you're not thoroughly pleased after your first issue, just write and your money will be refunded promptly.

The **WORKBASKET**, a pattern and direction service, is published monthly by Modern Handcraft, at 3958 Central Street, Kansas City 2, Missouri; printed in U. S. A. Yearly subscription price \$1.50 in U. S. and its possessions; \$2.00 in Canada.

**ADDRESS ALL CORRESPONDENCE AND SEND ALL ORDERS TO
THE WORKBASKET
3958 CENTRAL ST., KANSAS CITY 2, MO.**