

Creative Commons 4.0 NC SA BY FREE DISTRIBUTION ONLY - NOT FOR SALE



# Calla Lily

crochet designs





# "Hearts and Flowers" in Shadow Filet No. 1

Illustration on Front Cover

## MATERIALS REQUIRED:

**DAISY Mercerized Crochet Cotton, Art. 65, size 50, in white:**—4-skeins for 4 Place Mats;

or

**Lily MERCROCHET Mercerized Cotton, Art. 161, size 50, in White:**—7-balls for 4 Place Mats.

Steel crochet hook No. 14.

**GAUGE** — 6 sps - 1 inch, 5 rows - 1 inch.

**SIZE** — 17 x 18 inches.

Ch 24 and starting at A on Chart, tr in 16th ch from hook, tr in next 8 ch, ch 7, dtr in same place with last tr. **ROW 2**—Ch 8, turn, tr in dtr 7 tr in next ch-7 sp, tr in next tr (2 blks made), (ch 3, sk 3 tr, tr in next tr) twice (2 sps made), 8 tr in half of end ch-15, ch 3, tr in same place. **ROW 3**—Ch 15, turn, tr in 1st tr, 3 tr in next sp, tr in next tr (1 blk made), (ch 3, sk 3 tr, tr in next tr) twice, (ch 3, tr in next tr) twice, (ch 3, sk 3 tr, tr in next tr) twice, 4 tr in half of end sp, ch 7, dtr in same sp. Continue, following

Chart, starting and ending rows as in Rows 2 and 3 alternately. **ROW 14**—Ch 8, turn, tr in 1st tr, 2 blks, 11 sps, 3 blks, (ch 1, sk 1 tr, tr in next tr) twice (2 half-sps made), 1 sp, (ch 1, sk 1 tr, tr in next tr) 4 times (4 half-sps made), 2 sps, 2 blks, 2 half-sps, 1 blk, 4 half-sps, 1 sp, 4 blks, 7 sps, 2 blks, ch 3, tr in same place with last blk. Continue thru Row 33. **ROW 34**—Ch 7, turn, tr in 1st tr, 1 blk, follow Chart across and end with 1 blk in end sp, ch 2, tr in same place. **ROW 35**—Start and end as in Row 2. Continue thru Row 58, making the black spot in center of each flower of ch 5, sk 5 tr, tr in next tr (long sp made). **ROW 59**—Start row with ch-7, turn, 1 blk over blk. End row with blk over blk, ch 2, tr in end sp. **ROW 60**—Start row with ch 4, turn, blk over blk. End row with blk over blk, tr in end sp. **ROW 61**—Start row with ch 8, turn, sk 5 tr, tr in next tr, 1 blk. End row with ch 3, sk 3 tr, tr in next tr. In the center of Row 76, make ch 4, sk 3-tr, sc in next tr, ch 4, sk 3 tr, tr in next tr. Now work out one side of top of Heart. **ROW 82**—Ch 7, turn, sk dtr and 8 tr, tr in next tr, 2 blks, 22 sps, 2

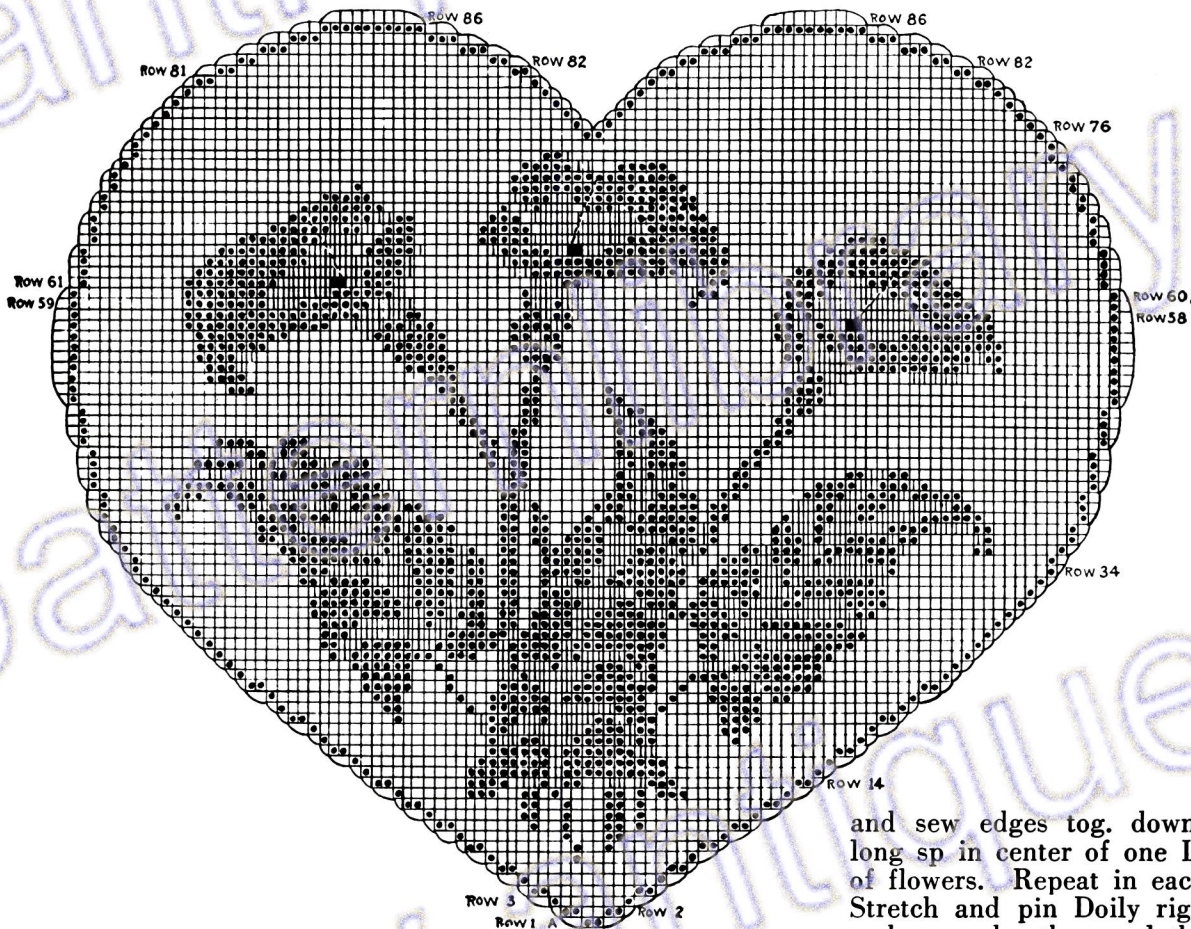
blks, sk 7 tr, dtr in next tr. Continue thru Row 86. Fasten off. Then work out top of other side. Fasten off.

**EDGE**—Join to bottom point, ch 3 and work dc around heart, keeping work flat. At center angle at top, make 5 dc around angle, holding back the last lp of each dc on hook, thread over and draw thru all 6 lps on hook (Cluster made). Complete row, join to ch-3. **2d rnd**—Make 1 sc in each dc around. Join and fasten off.

**PISTIL**—Ch 15, sk 3 ch, dc in next 12 ch. **ROW 2**—Ch 3, turn, dc in 12 dc. Repeat Row 2 thru Row 10. **ROW 11**—Ch 1, turn, (sk 1 dc, sc in next dc) 6 times. **ROW 12**—Ch 1, turn, (sk 1 sc, sc in next sc) 3 times. **ROW 13**—Ch 1, turn, sk 2 sc, sc in last sc. Fasten off. Roll lengthwise

and sew edges tog. down back. Tuck end down thru the long sp in center of one Lily and tack pistil up across throat of flowers. Repeat in each Lily.

Stretch and pin Doily right-side-down in true shape. Steam and press dry thru a cloth.



## CROCHET ABBREVIATIONS

Chain -----	Ch	Triple Treble -----	tr tr
Slip Stitch -----	sl st	Picot -----	p
Single Crochet -----	sc	Block -----	bl
Half Double Crochet -----	hdc	Space -----	sp
Double Crochet -----	dc	Loop -----	lp
Treble -----	tr	Skip -----	sk
Double Treble -----	dtr	Stitch (es) -----	st (s)

Copyright  
PRINTED IN U. S. A.

LILY MILLS COMPANY

Shelby, N. C.



# Filet Tablecloth No. 2

Illustration on Page 4

## MATERIALS REQUIRED:

**DAISY Mercerized Crochet Cotton**, size 30 in White, Art. 65, in 500-yd. skeins or Art. 97 in 350-yd. balls;

or

**Lily MERCROCHET Mercerized Cotton**, size 30 in White, Art. 161, in 300-yd. balls.

One Block (size — 12 inches square) requires approximately 375 yds. including edge.

Steel crochet hook No. 13.

GAUGE—6 sps - 1 inch; 6 rows - 1 inch.

**No. 1 BLOCK**—*ROW 1*—Ch 214 and starting at A on Chart, \*\* dc in 5th ch from hook, dc in next 5 ch (2 blks made), \* ch 3, sk 2 ch, sc in next ch, ch 3, sk 2 chs, dc in next ch (lacet st made). Repeat from \* 3 times. Dc in next 6 dc. Make 23 lacet sts, 2 blks, 4 lacet sts \*\* and 2 blks. *ROW 2*—Ch 3, turn, dc in next 6 dc, (ch 5, dc in next dc) 4 times, dc in next 6 dc, (ch 5, dc in next dc) 23 times, 2 blks, \* (ch 5, dc in next dc) 4 times, 2 blks. *ROW 3*—Ch 6, turn, sk 3 dc, sc in next dc, ch 3, sk 2 dc, dc in next dc, (5 dc in next sp, dc in next dc) 4 times, ch 3, sk 2 dc, sc in next dc, ch 3, sk 2 dc, dc in next dc, (ch 3, sc in next ch-5 sp, ch 3, dc in next dc) 3 times, (5 dc in next sp, dc in next dc) twice, 4 lacet sts, 4 blks, 1 lacet st, (4 blks, 4 lacet sts) twice, \* 8 blks and 1 lacet st. *ROW 4*—Ch 8, turn, sk lacet st, dc in next dc, 8 blks and follow Chart across, ending with ch 5, dc in end ch-6. Continue, following Chart, thru Row 70, making the long sps in center of flowers of ch 5, sk 5 sts, dc in next st. Fasten off.

**Pistil**—Ch 12, sk 3 ch, dc in remaining 9 ch. *ROW 2*—Ch 3, turn, dc in 9 dc. Repeat Row 2 thru Row 6. *ROW 7*—Ch 1, turn, sc in 1st dc, (sk 1 dc, sc in next dc) 4 times. *ROW 8*—Ch 1, turn, sc in 1st sc, (sk 1 sc, sc in next sc) twice. *Row 9*—Ch 1, turn, sk 2 sc, sc in last sc. Cut 8 inches long, thread to a needle, roll crochet lengthwise and sew edges tog. down back. Tuck end under bottom edge of one flower center and tack across center on dotted line. Repeat on each flower.

**CORNER BLOCK**—Ch 424 and starting at A on Chart, repeat Row 1 of No. 1 Block from \*\* to \*\*. Dc in next 2 ch. Holding back the last lp of each dc on hook, make dc in next 7 ch, thread over and draw thru all 8 lps on hook (corner Cluster made at B on Chart), dc in next 3 ch and follow Chart across to C. *ROW 2*—Repeat Row 2 of No. 1 Block to \*. (Ch 5, dc in next dc) 3 times, ch 5, holding

back the last lp of each dc on hook, make dc in next 7 dc in corner, thread over and draw thru all 8 lps on hook (corner Cluster made at B corner), (ch 5, dc in next dc) 4 times, 2 blks and follow Chart across to A corner. *ROW 3*—Repeat Row 3 of No. 1 Block to \*. Make 6 blks, 2 dc in next sp, (3 dc in bal. of sp, dc in next Cluster, 3 dc in half of next sp) made into a 7-dc B corner Cluster, 2 dc in bal. of same sp, dc in next dc, make 6 blks and follow Chart across to C corner. *ROW 4*—Follow Chart around to A corner, making a 7-dc Cluster at B corner. *ROW 5*—Follow Chart across to B corner, ch 3, sk 5 dc in corner, sc in next dc, then follow Chart to C corner. *ROW 6*—Follow Chart across to B corner, making a 2-dc Cluster in corner, then complete row to A corner. Continue, following Chart, until Block is worked out to D corner. Make all the squares on the diagonal from B to D corners which are marked with a cross, of a 7-dc Cluster, and the sps of a 2-dc Cluster. Make the long sps in center of flowers of ch 5, sk 5 sts, dc in next st,—the same as in No. 1 Block. Make a Pistil for each flower.

Sew Blocks tog. as in Tablecloth Chart.

**EDGE**—Make sc around tablecloth,—2 sc in each sp, sc between sps, and 3 sc in each corner.

*ROW 2*—Make sc in each sc around, 3 sc in center sc at each corner, with a ch-4 p in every 6th sc, placing ps in line between lacet sts. To make ps, ch 4, sl st in last sc.

Stretch and pin finished cloth right-side-down on quilting or curtain frames. Lay a section at a time over an ironing board or padded table, then steam and press dry thru a cloth. Repeat until entire cloth is blocked.

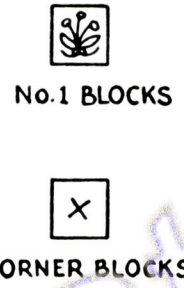
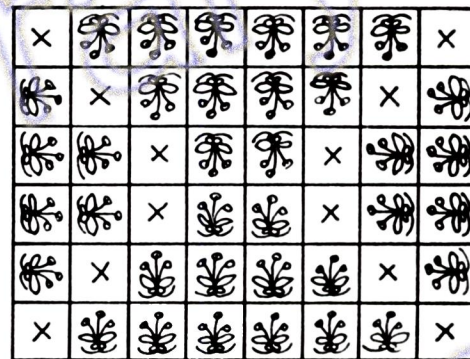
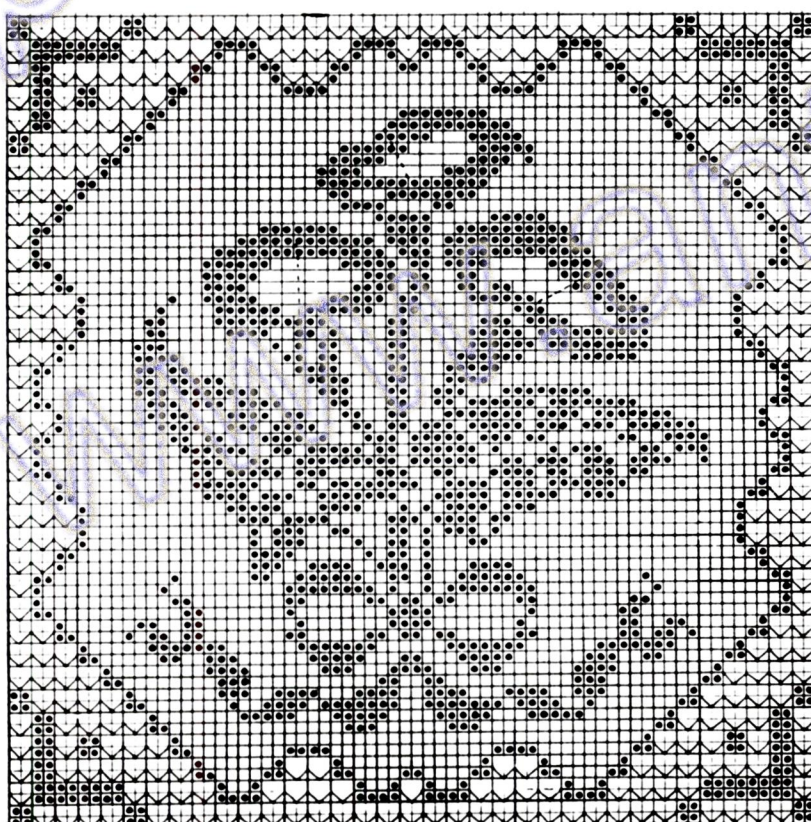
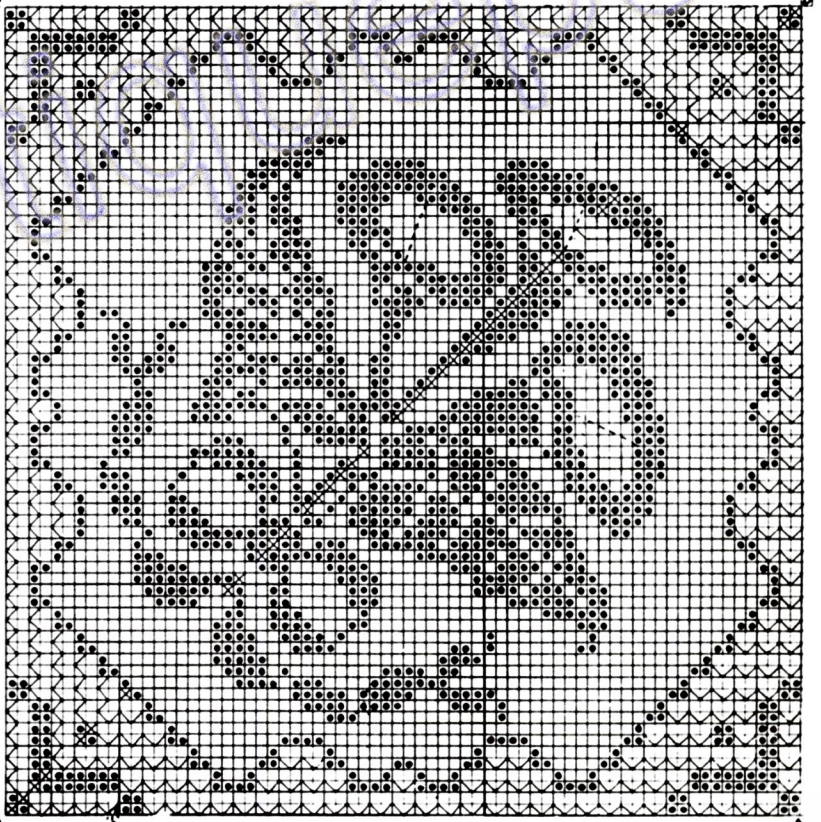


CHART FOR ARRANGEMENT OF BLOCKS



No. 1 BLOCK



CORNER BLOCK











# Filet Doily No. 3

Illustration on Page 5

## MATERIALS REQUIRED:

**DAISY Mercerized Crochet Cotton, Art. 65** in skeins or Art. 97 in balls:—  
2-skeins or balls White.

Made in size 20 and steel crochet hook No. 12, doily will measure 18 inches in diameter;

In size 30 and No. 13 hook,—16 inches;

or

**Lily Mercrochet Mercerized Cotton, Art. 161:—**  
2-balls White.

Made in size 20 and No. 12 hook, doily will measure 17 inches.  
In size 30 and No. 13 hook,—15 inches;

or

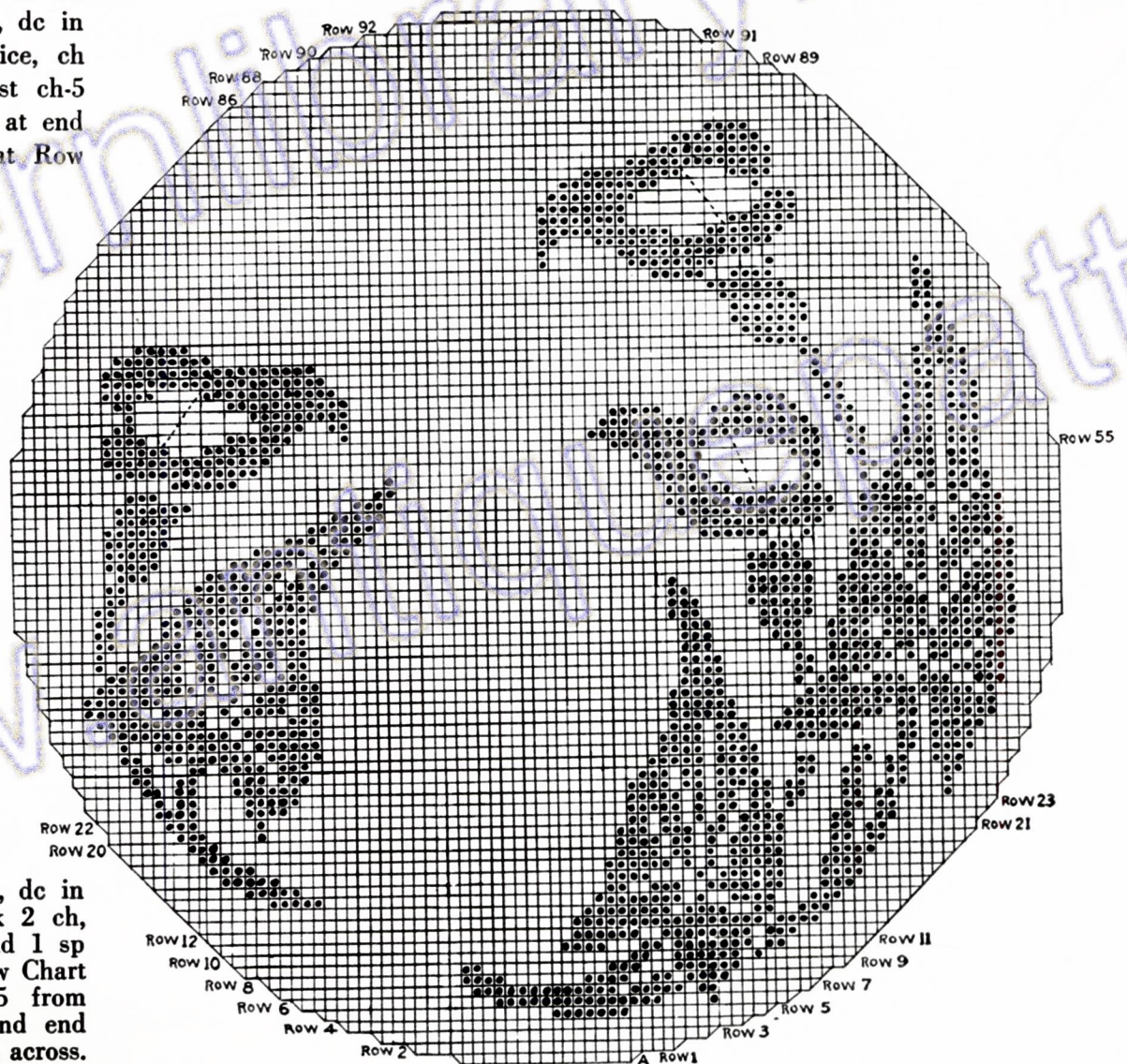
**Lily SKYTONE Mercerized Crochet Cotton, Art. 132:—**  
2-balls White and No. 7 hook,—doily size 24 inches.

Ch 53 and starting at A on Chart, make dc in 8th ch from hook (half-sp made), (ch 2, sk 2 ch, dc in next ch) 15 times (15 sps made), ch 2, tr in same st with last dc (half-sp made). **ROW 2**—Ch 16, turn, dc in 8th ch from hook, (ch 2, sk 2 ch, dc in next ch) twice, ch 2, dc in next tr (1 half-sp and 3 sps added at beg. of row) make 16 sps, ch 2, dc in 3d st of end ch-7, ch 5, dc in same st, (ch 5, turn, dc in 3d st of previous ch-5) twice, ch 4, turn, dc in 3d st of last ch-5 (3 sps and 1 half-sp added at end of row). **ROW 3**—Ch 13, dc in 8th ch from hook, (ch 2, sk 2 ch, dc in next st) twice (1 half-sp and 2 sps added at beg. of row). \*\* make 24 sps, \* ch 5, sl st in 3d st of next ch-7, (ch 5, turn, dc in 3d st of previous ch-5) twice, ch 4, turn, dc in 3d st of last ch-5 (2 sps and 1 half-sp added at end of row). \* **ROW 4**—Repeat Row 3 to \*\*, make 30 sps, then repeat Row 3 from \* to \*. **ROW 5**—Ch 10, dc in 8th ch from hook, ch 2, sk 2 ch, dc in next st (1 half-sp and 1 sp added at beg. of row), make 11 sps, (2 dc in next sp, dc in next dc) 7 times (7 blks made), make 19 sps, \* ch 5, dc in same place with last dc, ch 4, turn, dc in 3d st of last ch-5 (1 sp and 1 half-sp added at end of row). \* **ROWS 6 & 7**—Start and end as in Row 5, following Chart across. **ROW 8**—Ch 7, dc in tr (1 half-sp added at beg. of row), make 17 sps, 4 blks, 7 sps, 4 blks, 2 sps, 2 blks, 1 sp, 4 blks and 8 sps, ch 2, tr in same place with last dc (1 half-sp added at end of row). **ROW 9**—Ch 10, turn, dc in 8th ch from hook, ch 2, sk 2 ch, dc in next st (1 half-sp and 1 sp added at beg. of row), follow Chart across, then repeat Row 5 from \* to \*. **ROW 10**—Start and end as in Row 8, following Chart across.

**ROW 11**—Ch 7, turn, dc in tr (1 half-sp added at beg. of row), make 7 sps, 2 blks, 1 sp, 7 blks, 1 sp, 2 blks, 3 sps, 4 blks and 30 sps, ch 2, tr in same place with last dc (1 half-sp added at end of row). **ROWS 12 to 20 incl.**—Start and end as in Row 11, following Chart across. **ROW 21**—Ch 5, turn, sk tr, dc in next dc. Follow Chart across, ending even. **ROWS 22 and 23**—Start and end as in Row 11. Continue, following Chart, thru Row 54, making the long sps in center of flowers of ch-5, sk 5 sts, dc in next st. **ROW 55**—Ch 4, turn, sk 1st dc, dc in next dc (1 half-sp decrease at beg. of row). Decrease a half-sp at end of row by making dc in end dc, sk 2 sts of end ch-5, tr in next st. Continue, dropping half-sps at beg. and end of those rows indicated on Chart. **ROWS 86, 88, 89 and 90**—Ch 1, turn, sl st across 1 sp to next dc, ch 4, dc in next dc (1 half-sp and 1 sp decrease at beg. of row), follow Chart across, decreasing 1 sp and 1 half-sp at end of row. **ROWS 91 and 92**—Ch 1, turn, sl st across 2 sps to next dc, ch 4, dc in next dc (1 half-sp and 2 sps decreased at beg. of row), follow Chart across, decreasing 2 sps and 1 half-sp at end of row. **ROW 93**—Decrease 1 half-sp and 3 sps at each end of row. **Edge**—Work dc around doily, keeping edge flat. **2d rnd**—(Sc in 8 dc, ch 5, sl st in last sc for a p) repeated around. Fasten off.

**PISTIL**—Ch 30, sk 1 ch, sc in next 2 ch, hdc in next 2 ch, dc in next 25 ch. Fasten off. Tuck end under bottom edge of one flower center and tack across center on dotted line. Repeat on each flower.

Stretch and pin doily right-side-down in a true circle. Steam and press dry thru a cloth.



Use Daisy, Skytone or Mercrochet in these designs.



## Table Doily in Crocheted Embroidery No. 4

Illustration on Page 8

**MATERIALS REQUIRED:****DAISY Mercerized Crochet Cotton, Art. 65,**size 30: 1-skein each Emerald Green, White and Yellow;  
or**Lily Mercrochet Mercerized Cotton, Art. 161, size 30:**

2-balls Hunter Green and

1-ball each White and Dk. Yellow.

Steel crochet hook No. 13.

4 pieces Yellow linen 12½ x 18½ inches.

Hem edge of one piece of linen with a ¼ inch hem.

**EDGE**—Attach Green at one corner, inserting hook at base of hem, and make sc over hem ¼ inch to right of corner point, ch 3, sc over hem at point, ch 3, sc over hem ¼ inch to left of point,—inserting hook in same hole at base of hem for all 3 sc. (Ch 3, sc over hem) repeated to next corner, making 5 sc per inch. Repeat around, making each corner as for 1st one. The number of ch-3 sps on each side, counting from center sc at corners, should divide evenly by 4, plus 3 sps. Join to 1st sc. **2nd rnd:** (Ch 2, tr) 8 times in next (corner) sc, ch 2, sk next sc, 3 sc in next ch-3 sp, \* sk 1 sp, (ch 2, tr) 6 times in next sp, ch 2, sk 1 sp, 3 sc in next sp. Repeat from \* across thru 2d sp from corner, sk next sc, (ch 2, tr) 8 times in next (corner) sc, ch 2, sk 1 sc, 3 sc in next sp. Repeat from \* around. Join and fasten off. **3rd rnd:** Attach White to center sc between any 2 shells, \* sc in 1st sp on next shell, (ch 4, sc in next sp) repeated around shells, sc in center sc between shells. Repeat from \* around. Join and fasten off.

**CALLA LILY**—With White ch 7, dc in 7th ch from hook, (ch 3, dc in same st) 4 times, ch 3, join with sl st in 3d st of next ch-6. **2d rnd:** Ch 3, (4 dc in next sp, dc in next dc) twice, \* (ch 1, dc) twice in next sp, ch 1, dc in next dc. Repeat from \* once. 4 dc in next sp, dc in next dc, 4 dc in next sp, join with sl st to top of ch-3. **3d rnd:** Ch 3, dc in same place as sl st, (dc in next dc, 2 dc in next dc) 4 times, dc in next dc, ch 1, dc in next dc, \* (ch 1, dc in next sp) twice, ch 1, dc in next dc. Repeat from \* twice. Ch 1, dc in next dc, (2 dc in next dc, dc in next dc) 4 times. Join. **4th rnd:** Ch 3, dc in same place as sl st, (dc in next dc, 2 dc in next dc) 7 times, (ch 2, dc in next sp) 11 times, ch 2, sk 1 dc, (2 dc in next dc, dc in next dc) 6 times. Join. **5th rnd:** Ch 3, dc in same place as sl st, (dc in next 2 dc, 2 dc in next dc) 7 times, (dc in next dc, 3 dc in next sp) 5 times, dc in next dc, 3 tr in next sp, tr in next dc, 3 tr in next sp, (dc in next sp, 3 dc in next sp) 5 times. (dc in next 2 dc, 2 dc in next dc) 6 times. Join. **6th rnd:** (Ch 3, sk 1 dc, sc in next dc) 27 times, ch 5, sc in same st with last sc, (ch 3, sk 1 dc, sc in next dc) 23 times, ch 1, sk 1 dc, hdc in next st. **7th rnd:** (Ch 3, sc in next lp) repeated halfway around to ch-5 lp at tip, ch 5, sc in same lp, (ch 3, sc in

next lp) repeated around, ending with ch-1, hdc in hdc at end of last row,—for final lp. **8th rnd:** Repeat 7th rnd. Fasten off. With right side inside, roll flower circle into a sharp-pointed funnel at opposite side from tip point, folding left side over first, then right side over. Stretch top edges on front and roll back as in illustration and tack. Make 4 Lilies. **Pistil**—With Yellow, ch 8, sk 3 ch, dc in next 5 ch. **ROW 2**—Ch 3, turn, dc in 5 dc. Repeat Row 2 thru Row 5. **ROW 6**—Ch 1, turn, sc in 1st dc, (sk 1 dc, sc in next dc) twice. **ROW 7**—Ch 1, turn, sk 2 sc, sc in last sc. Cut 8 inches long, thread to a needle, roll lengthwise, sew edges tog. down back and tack in throat of a Lily. Repeat for each Lily. **Stem**—With Green, ch 52, sk 1 ch, sc in next ch, hdc in each ch to end. **Calyx**—Ch 2 and working over bar of last hdc, inserting hook between last 2 hdc, make dc, 2 tr and 10 dtr across end of stem. Fasten off. Sew Calyx around base of Lily.

**LARGE LEAF**—**ROW 1**—With Green, \* ch 6, holding back the last lp of each dc on hook, make 2 dc in 5th ch from hook, thread over and draw thru all 3 lps on hook (Cluster made). Repeat from \* thru 9 Clusters. **2nd rnd:** Ch 14, tr tr in ch-1 between 1st 2 Clusters, (ch 6, tr tr between next 2 Clusters) 4 times, (ch 6, dtr between next 2 Clusters) 3 times, ch 6, tr in end ch-1, ch 5, tr in same ch, ch 4, dc in same ch. Working along other side of Row 1, (ch 3, dtr between next 2 Clusters) twice, (ch 3, tr tr between next 2 Clusters) 6 times, ch 14, sc in end Cluster. **3rd rnd:** Hdc and 16 dc in next ch-14 sp, (dc in next st, 7 dc in next sp) 9 times, 2 dc in next tr, ch 5, sl st in last dc for a p, 2 dc in same tr, 4 dc in next sp, (dc in next st, 3 dc in next sp) 8 times, dc in next tr, 16 dc and hdc in next sp, join to sc. **Stem**—Ch 25, sk 1 ch, sc in next 24 ch, join to leaf. **SMALL LEAF**—Repeat Row 1 of Large Leaf thru 7 Clusters. **2nd rnd:** Ch 12, dtr in ch-1 between 1st 2 Clusters, (ch 6, tr tr between next 2 Clusters) 4 times, ch 6, dtr between next 2 Clusters, ch 6, tr in end ch-1, ch 5, tr in same st, ch 4, dc in same st. Working on other side of Row 1, ch 3, tr between next 2 Clusters, ch 3, dtr between next 2 Clusters, (ch 3, tr tr between next 2 Clusters) 3 times, ch 3, dtr between next 2 Clusters, ch 12, sc in end Cluster. **3rd rnd:** Turn, sc in sc, hdc and 14 dc in next ch-12 sp, (dc in next st, 3 dc in next sp) 6 times, dc in next st, 4 dc in next sp, (2 dc, a ch-5 p and 2 dc) in next tr, 5 dc in next sp, (dc in next st, 7 dc in next sp) 6 times, dc in next st, 14 dc and hdc in next sp, join to sc. **Stem**—Ch 16, sk 1 ch, sc in next 15 ch, join to leaf. Fasten off.

Tack the Large Leaf stem on left side of Lily Stem and the Small Leaf stem on right side, ½ inch from end. Baste Spray on top right corner of Doily as in illustration, then hem down around edges. Repeat on diagonally opposite corner. On other 2 corners, reverse spray:—Turn Large Leaf before making Edge (rnd 3), reversing directions; do not turn Small Leaf before making Edge (rnd 3), reversing directions.

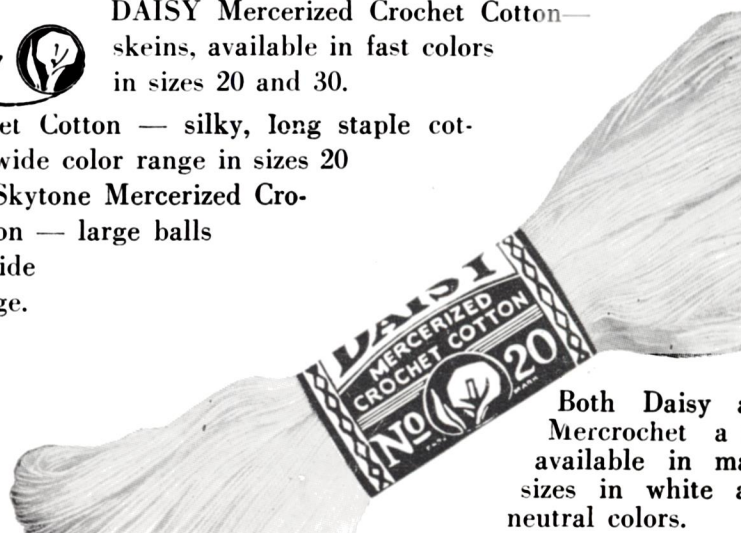
Stretch and pin doily right-side-down in true shape. Steam and press dry thru a cloth.



*Lily* 

Mercrochet Cotton — silky, long staple cotton in a wide color range in sizes 20 and 30. Skytone Mercerized Crochet Cotton — large balls in a wide color range.

DAISY Mercerized Crochet Cotton—skeins, available in fast colors in sizes 20 and 30.



Both Daisy and Mercrochet are available in many sizes in white and neutral colors.





*Table Daily in Crocheted Embroidery No. 4*  
[www.antiq...patternlibra.org](http://www.antiq...patternlibra.org) 2018.10  
**DIRECTIONS ON PAGE 7**





*Calla Lily Buffet Set No. 5*  
[www.antiquepatternlibrary.org](http://www.antiquepatternlibrary.org) 2018.10  
**DIRECTIONS ON PAGE 10**



## Calla Lily Buffet Set No. 5

Illustration on Page 9

**MATERIALS REQUIRED:****Lily SKYTONE Mercerized Crochet Cotton, Art. 123:**

1 1/3-balls Emerald Green and

1/2-ball White; and

**DAISY Mercerized Crochet Cotton, Art. 65,**

size 20: 1 1/3-skeins Emerald Green

1-skein White

1/3-skein Yellow.

Steel crochet hooks Nos. 7 and 12.

**LARGE DOILY**—(Size - 18 inches)—*Calla Lily*—Starting at center with White SKYTONE and No. 7 hook, ch 2, 7 sc in 2d ch from hook, join with sl st in back lp of 1st sc. **2d rnd:** Ch 3, 2 dc in same place as sl st, (3 dc in back lp of next sc) 6 times, join with sl st to top of ch-3. **3rd rnd:** Ch 3, dc in same place as sl st. Working in both lps of sts, (2 dc in next dc) 5 times, (ch 1, dc in next dc) 9 times, ch 1, (2 dc in next dc) 6 times. Join. **4th rnd:** Ch 3, dc in same place as sl st, (dc in next dc, 2 dc in next dc) 5 times, (ch 2, dc in next ch-1 sp) 10 times, ch 2, sk 1 dc, (dc in next dc, 2 dc in next dc) 5 times, dc in next dc. Join. **5th rnd:** Ch 3, dc in same place as sl st, (dc in next 2 dc, 2 dc in next dc) 5 times, dc in next dc, (3 dc in next ch-2 sp, dc in next dc) 5 times, 3 tr in next sp, (dc in next dc, 3 dc in next sp) 5 times, (dc in next 2 dc, 2 dc in next dc) 5 times, dc in next dc. Join. **6th rnd:** Ch 3, dc in same place as sl st, (dc in next 5 dc, 2 dc in next dc) 6 times, dc in next 6 dc, tr in next tr, in next tr make 2 tr, ch 3, sl st in last tr for a p, and 2 tr. Tr in next tr, (dc in next 5 dc, 2 dc in next dc) 6 times, dc in next 5 dc. Join. Fasten off. **Pistil**—With DAISY in Yellow and No. 12 hook, ch 10, sk 3 ch, dc in next 7 ch. **ROW 2**—Ch 3, turn, dc in 7 dc. Repeat Row 2 thru Row 6. **ROW 7**—Ch 1, turn, sc in 1st dc, (sk 1 dc, sc in next dc) 3 times. **ROW 8**—Ch 1, turn, (sk 1 sc, sc in next sc) twice. **ROW 9**—Ch 1, turn, sk 1 sc, sc in last sc. Cut 8 inches long, thread to a needle, roll crochet lengthwise and sew edges tog. down back. With right side inside, roll flower circle into a funnel at opposite side from p, folding left side over first, then right side over. Stretch top edges on front and roll back as in illustration. Tack in place, insert Pistil in tube and tack. Make 8 Lilies.

Starting at center with Emerald Green SKYTONE and No. 7 hook, ch 10, join with sl st to form ring. **1st rnd:** Ch 4, dc in ring, (ch 1, dc in ring) 14 times, ch 1, join with sl st to 3d ch of ch-4. **2nd rnd:** Ch 3, dc in same place as sl st, \* ch 2, dc in next dc, ch 2, 2 dc in next dc. Repeat from \* around. Join with ch-2, sl st in top of ch-3. **3d rnd:** Ch 3, dc in same place as sl st, 2 dc in next dc, \* ch 2, dc in next dc, ch 2, 2 dc in each of 2 dc in next group. Repeat from \* around. Join. **4th rnd:** Ch 3, dc in same place as sl st, \* dc in each dc across dc-group, 2 dc in last dc, ch 2, 2 dc in next dc, ch 2, 2 dc in 1st dc of next dc-group. Repeat from \* around. Join. **5th rnd:** Ch 3, dc in next 4 dc, \* 2 dc in last dc, ch 2, dc in 1st dc of next group (flower stem), 2 dc in next dc, ch 2, dc in 1st 5 dc across next dc-group. Repeat from \* around. Join. **6th rnd:** Ch 3, dc in same place as sl st, \* dc in next 5 dc, 2 dc in last dc, ch 2, dc in next 3 dc of stem, ch 2, 2 dc in 1st dc of next dc-group. Repeat from \* around. Join. **7th rnd:** Ch 3, dc in next 3 dc, \* ch 3, sk 1 dc, dc in next 4 dc, ch 2, dc in 3 dc of stem, ch 2, dc in next 4 dc. Repeat from \* around. Join. **8th rnd:** Ch 3, dc in next 3 dc, \* ch 3, sc in next ch-3, ch 3, dc in next 4 dc, ch 2, dc in 3 dc of stem, ch 2, dc in next 4 dc. Repeat from \* around. Join. **9th rnd:** Ch 3, dc in next 3 dc, \* ch 5, sc in sc between ch-3 lps, ch 5,

dc in next 4 dc, ch 2, dc in 3 dc of stem, ch 2, dc in next 4 dc. Repeat from \* around. Join. **10th rnd:** Work as for 9th rnd, having 7-ch lps instead of 5-ch lps on leaves, but keeping ch-2 between leaf and stem groups. **11th rnd:** Work as for 9th rnd, having ch-7, dc in sc, ch-7, across each leaf. **12th rnd:** Continue as before, having ch-8, dc in center dc, ch-8, across each leaf. **13th rnd:** Make ch-9, dc in center dc, ch-9, across each leaf. **14th rnd:** Ch 3, dc in next 3 dc, \* ch 9, dc in next dc, ch 9, dc in next 4 dc, ch 4, dc in 3 dc of stem, ch 4, dc in next 4 dc. Repeat from \* around. Join. **15th to 18th rnds incl:** Work as for 14th rnd, having 1 more ch in each row between leaves and stems, and keeping ch-9, dc, ch-9, across each leaf. **19th rnd:** Ch 3, dc in next 3 dc, \* ch 9, dc in next dc, ch 9, dc in next 4 dc, ch 8, 2 dc in 1st dc of next stem, dc in next dc, 2 dc in last dc, ch 8, dc in next 4 dc. Repeat from \* around. Join. **20th rnd:** Ch 5, tr in next 3 dc, \* ch 9, sc in next dc, ch 9, tr in next 4 dc, ch 9, 2 dc in 1st dc of stem, dc in next 3 dc, 2 dc in last dc, ch 9, tr in next 4 dc. Repeat from \* around. Join. **21st rnd:** Ch 5, tr in next 3 tr, \* ch 9, sc in next sc, ch 9, tr in next 4 tr, ch 11, 2 dc in each of 1st 2 dc on stem, dc in next 5 dc, 2 dc in each of last 2 dc, ch 11, tr in next 4 tr. Repeat from \* around. Join. Sew the bottom tube of a Lily under the last 3 rows of each stem. **22nd rnd:** Ch 5, tr in next 3 tr, \* ch 9, sc in next sc, ch 9, tr in next 4 tr, ch 6, sc in 21st st on next Lily, counting around to right from top p, (ch 11, sk 6 dc, sc in next dc) twice, ch 11, sc in p at tip of Lily, (ch 11, sk 6 sts, sc in next st) 3 times, ch 6, tr in next 4 tr on leaf. Repeat from \* around. Join. **23rd rnd:** Ch 5, tr in next 3 tr, \* ch 10, sc in next sc, ch 10, tr in next 4 tr, (ch 12, sc in next ch-11 lp) 3 times, ch 6, (tr, ch 6, tr) in next sc, ch 6, sc in next lp, (ch 12, sc in next lp) twice, ch 12, tr in next 4 tr of leaf. Repeat from \* around. Join. **24th rnd:** Ch 5, tr in next 3 tr, ch 12, sc in next sc, ch 12, tr in next 4 tr. Ch 5, turn, tr in next 3 tr, tr in next 4 tr. Ch 1, turn, sk 1 tr, sc in next 6 tr, \* ch 5, sc in next ch-12 lp, (ch 11, sc in next lp) twice, ch 6, tr in next sp, (ch 4, tr) 4 times in next (center) sp, ch 4, tr in next sp, ch 6, sc in next lp, (ch 11, sc in next lp) twice, ch 10, tr in next 4 tr, ch 12, sc in next sc, ch 12, tr in next 4 tr. Ch 5, turn, tr in next 3 tr, tr in next 3 tr, sl st in 5th ch of next ch-10 lp. Ch 1, turn, sk sl st, sc in next 6 tr. Repeat from \* around. Join with ch-5, sl st in 1st sc on next leaf. **25th rnd:** \* Ch 5, holding back the last lp of each tr on hook, make tr in next 5 sc, thread over and draw thru all 6 lps on hook (Cluster made), ch 4, sl st in Cluster for a p, ch 5, sl st down in same place with last tr, 5 sc in next ch-5 sp, (6 sc in next lp, ch 4, sl st in last sc for a p, 6 sc in bal. of lp) twice, (3 sc, a p, 3 sc) in next lp, (3 sc, a p, 2 sc) in each of next 5 sps, (3 sc, a p, 3 sc) in next sp, (6 sc, a p, 6 sc) in each of next 2 lps, 5 sc in next sp, sl st in 1st sc on leaf. Repeat from \* around. Join. Fasten off.

**SMALL DOILY**—(Size - 14 inches)—(Make two)—Repeat Large Doily using DAISY White, Yellow and Emerald Green and No. 12 hook. **Pistil**—Using Yellow, ch 8, sk 3 ch, dc in next 5 ch. **ROW 2**—Ch 3, turn, dc in 5 dc. Repeat Row 2 thru Row 5. **ROW 6**—Ch 1, turn, sc in 1st dc, (sk 1 dc, sc in next dc) twice. **ROW 7**—Ch 1, turn, sk 1 sc, sc in next 2 sc. **ROW 8**—Ch 1, turn, sk 1 sc, sc in last sc. Cut 8 inches long, thread to a needle, roll lengthwise and sew edges tog. down back. Make one for each Lily.

Stretch and pin doilies right-side-down in true circle. Steam and press dry thru a cloth.



## Towel Set No. 6

Illustration on Page 12

**MATERIALS REQUIRED:**

**Lily SKYTONE Mercerized Crochet Cotton, Art. 123:**—  
1-ball each White and Emerald Green, and

**DAISY Mercerized Crochet Cotton, Art. 65,** size 20:—

1-skein each Yellow, White and Emerald Green; and

Lily Tatting Cotton, Art. 108:—

1-ball each White, Dk. Yellow and Hunter Green.

Steel chochet hooks Nos. 7, 12 and 14.

A pink bath towel, hand towel and wash cloth.

**BATH TOWEL—**

**Lily**—With White SKYTONE and No. 7 hook, ch 8, join with sl st to form ring. *1st rnd:* Ch 4, dc in ring, (ch 1, dc) 10 times in ring, ch 1, join with sl st in 3d st of ch-4. *2nd rnd:* Ch 3, (2 dc in next sp, dc in next dc) 4 times, \* (ch 1, dc in next sp) twice, ch 1, dc in next dc. Repeat from \* once. Ch 1, (2 dc in next sp, dc in next dc) 3 times, 2 dc in next sp, join to ch-3. *3d rnd:* Ch 3, dc in same place, (dc in next dc, 2 dc in next dc) 6 times, (2 dc in next sp, dc in next dc) 3 times, 3 tr in next sp, (dc in next dc, 2 dc in next sp) 3 times, (dc in next dc, 2 dc in next dc) 5 times, dc in next dc, join to ch-3. *4th rnd:* Ch 3, dc in same place, (dc in next dc, 2 dc in next dc) 13 times, dc in next 2 dc, tr in next st, 2 tr in next tr, ch 3, sl st in last tr for a p, 2 tr in same st with last tr, tr in next st, (dc in next dc, 2 dc in next dc) 12 times, dc in next dc, join to ch-3. Fasten off. **Pistil**—With DAISY in Yellow and No. 12 hook, ch 12, sk 3 ch, dc in next 9 ch. **ROW 2**—Ch 3, turn, dc in 9 dc. Repeat thru Row 5. **ROW 6**—Ch 1, turn, sc in 1st dc, (sk 1 dc, sc in next dc) 4 times. **ROW 7**—Ch 1, turn, sc in 1st sc, (sk 1 sc, sc in next sc) twice. **ROW 8**—Ch 1, turn, sk 2 sc, sc in end sc. Fasten off. Roll lengthwise and sew edges tog. down back.

With right side inside, roll flower circle into a funnel at opposite side from point, folding left side over first, then right side over. Stretch top edges on front and roll back as in illustration. Tack in place, insert Pistil in tube and tack. Make 5 Lilies, rolling two so tip turns towards the right and two to the left.

**LARGE LEAF**—With Green SKYTONE and No. 7 hook, ch 25, join with sl st to form ring. \* Ch 4, turn, sk 1 ch of long ch, dc in next ch, (ch 1, dc in next ch, ch 1, sk 1 ch, dc in next ch) twice, ch 1, sk 1 ch, dc in next ch. \* Ch 18, turn, sk 5 ch-1 sps, dc in 2d st of end ch-4. Repeat from \* to \*. Ch 1, sk 1 ch, dc in next ch. Ch 16, turn, sk 6 ch-1 sps, dc in 2d st of ch-4. Repeat from \* to \*. Ch 16, turn, sk 5 ch-1 sps, dc in 2d st of ch-4. Ch 4, turn, sk 1 ch of long ch, dc in next ch, ch 1, dc in next ch, (ch 1, sk 1 ch, dc in next ch) twice. Ch 8, turn, sk 4 ch-1 sps, tr tr in 2d st of ch-4. Ch 1, 9 sc on bar of tr tr, sc in next st, (2 sc in next sp, sc in next st) 7 times. **Other Half**—Ch 24, turn, sl st in last sc on center rib, sl st in next 3 sc. \* Ch 1, turn, sk 1 st of long ch, dc in next ch, (ch 1, dc in next ch, ch 1, sk 1 ch, dc in next ch) twice, \* ch 1, sk 1 ch, dc in next ch. Ch 16, turn, sk 2 sc on center rib, sl st in next 4 sc. Repeat from \* to \*. Ch 1, dc in next ch, ch 1, sk 1 ch, dc in next ch. Ch 14, turn, sk 2 sc on center rib, sl st in next 4 sc. Repeat from \* to \*. Ch 1, sk 1 ch, dc in next ch. Ch 14, turn, sk 2 sc on center rib, sl st in next 4 sc. Ch 1, turn, sk 1 st of long ch, dc in next ch, ch 1, dc in next ch, (ch 1, sk 1 ch, dc in next ch) 3 times. Ch 6, turn, sl st in end sc of center rib. **Edge**—Ch 1, 2 sc in same st, then work sc closely around leaf, join to 1st sc, ch 3, sl st in same sc. Fasten off. Make a 2d Leaf, turning it over before making Edge.

**SMALL LEAF**—Ch 18, join with sl st to form ring. \* Ch 4, turn, sk 1 ch of long ch, dc in next ch, ch 1, dc in next ch, (ch 1, sk 1 ch, dc in next ch) twice. \* Ch 12, turn, sk 3 ch-1 sps, dc in 2d st of end ch-4. Repeat from \* to \*. Ch 10, turn, sk 3 ch-1 sps, dc in 2d st of end ch-4. Ch 4, turn, dc in 2d st of long ch, ch 1, dc in next ch, ch 1, sk 1 ch, dc in next ch. Ch 6, turn, sk 2 ch-1 sps, dtr in 2d st of end ch-4. Ch 1, 7 sc on bar of dtr, sc in next st, (2 sc in next sp, sc in next st) 5 times. **2d Half**—Ch 16, turn, sl st in last sc on center rib, sl st in next 3 sc. \* Ch 1, turn, dc in 2d st of ch-16, ch 1, dc in next ch, (ch 1, sk 1 ch, dc in next ch) twice. \* Ch 10, turn, sk 2 sc on center rib, sl st in next 4 sc. Repeat from \* to \*. Ch 8, turn, sk 2 sc on center rib, sl st in next 4 sc. Ch 1, turn, dc in 2d st of ch-8, ch 1, dc in next ch, ch 1, sk 1 ch, dc in next ch, ch 4, turn, sl st in end sc on center rib. Repeat Edge on Large Leaf. Make a 2d Small Leaf in same way, then make a 3d, turning it over before working Edge. Following illustration, arrange Lilies and Leaves on towel.

**CENTER SPRAY**—**Center Flower Stem**—With Green SKYTONE, make a chain  $5\frac{3}{4}$  inches long, sk 1 st, sc in next 2 ch, hdc in each ch to 2d from end, sc in end ch, ch 1, dc and 8 tr in same end ch. Fasten off. Sew Calyx around base of center Lily. Make stem to right-hand Lily in same way, starting with a  $4\frac{3}{4}$  inch chain. Make stem 4 inches long for 3d Lily. **Large Leaf Stem**—Make a chain  $2\frac{1}{2}$  inches long, sk 1 ch, sc in each remaining ch. Fasten off. Sew to base of right-hand leaf. Make stem to other Large Leaf 2 inches long, and to Small Leaf,  $2\frac{1}{4}$  inches long.

**SMALL SPRAY**—Make flower stem  $2\frac{1}{4}$  inches long, plus Calyx. Make leaf stem 1 inch long. Arrange Center Spray so stems extend  $1\frac{1}{4}$  inches below border band. Place a Small Spray at each side, stems touching top of border band. Sew down closely.

**BRAID**—With White SKYTONE and No. 7 hook, make a chain to reach from one side of towel to Center Spray, across top of border band, sk 1 ch, sl st in next ch, (ch 1, sl st in next ch) repeated to end, ch 1, sl st in same end ch, (ch 1, sl st in next st) repeated across other side of chain. Fasten off. Sew on towel. Make a 2d Braid and sew on bottom edge of border band. Repeat on other side,—from edge to Center Spray.

**HAND TOWEL**—With DAISY and No. 12 hook, make 4 Lilies, 2 Large Leaves and 2 Small Leaves. Make Pistils for Lilies of Yellow Tatting Cotton and No. 14 hook.

**Center Spray**—Make long flower stem  $4\frac{3}{4}$  inches long, plus Calyx, other 3 inches long. Make 1 Large Leaf Stem  $1\frac{1}{4}$  inches long, other 1 inch long.

**Small Spray**—Make flower stem  $2\frac{1}{4}$  inches long, plus Calyx, and leaf stem  $\frac{3}{4}$  inch long. Sew on towel and repeat Braid with White DAISY and No. 12 hook.

**WASHCLOTH**—Make Lily and 2 Small Leaves of Tatting Cotton and No. 14 hook. Make flower stem  $1\frac{1}{4}$  inches long, plus Calyx, leaf stem  $\frac{3}{4}$  inch long.

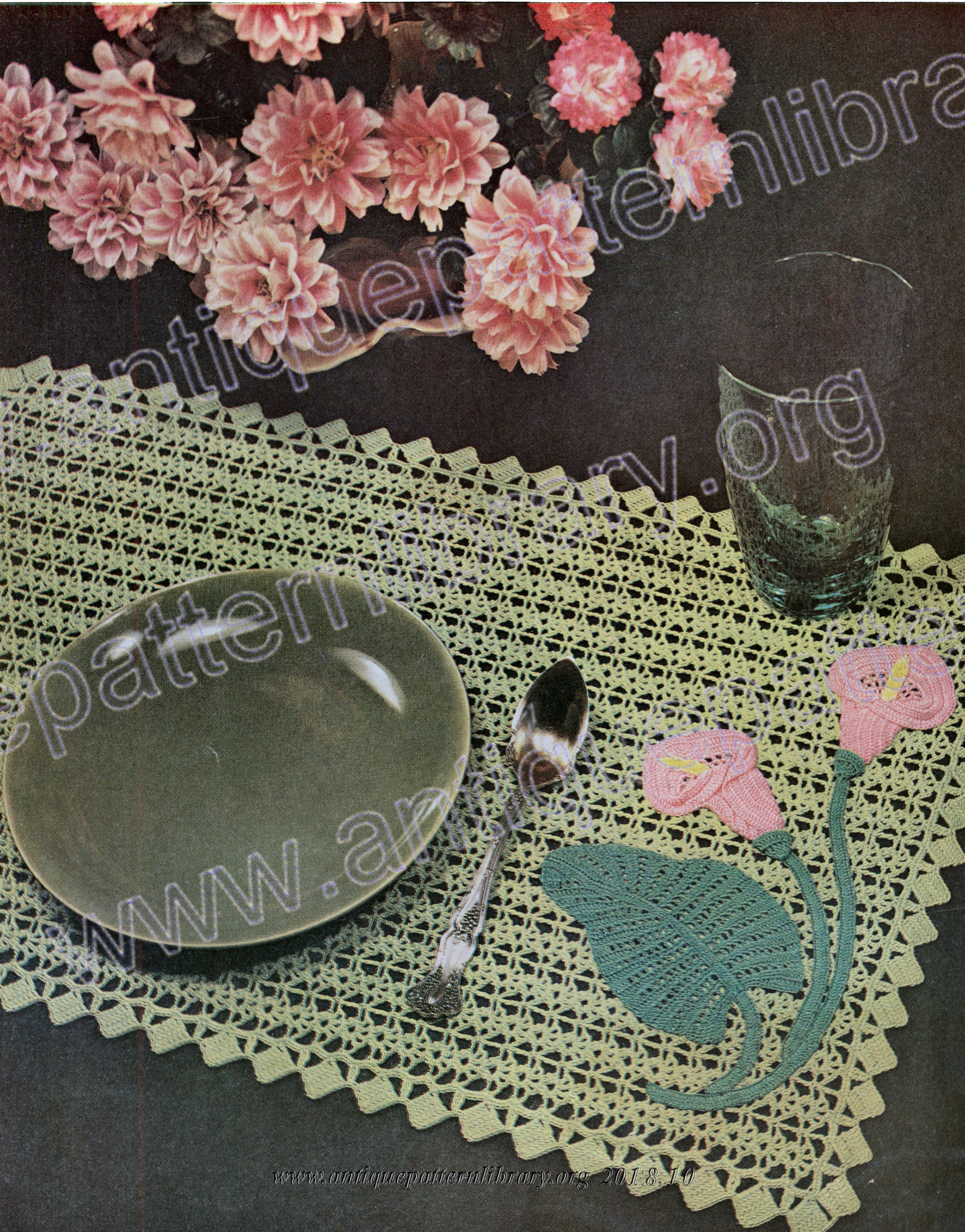
**Pistil**—With Yellow Tatting Cotton and No. 14 hook, ch 8, sk 3 ch, dc in next 5 ch. **ROW 2**—Ch 3, turn, dc in 5 dc. Repeat thru Row 4. **ROW 5**—Ch 1, turn, sc in 1st dc, (sk 1 dc, sc in next dc) twice. Ch 1, turn, sk 2 sc, sc in next sc. Fasten off and tack in Lily. Make 2 Braid pieces 3 inches long of White DAISY and No. 12 hook. Sew on one corner of washcloth at top and bottom of border band. Sew Flower Spray above Braid.

Steam and press towels and washcloth on back.











## Table Doily in Appliqued Crochet No. 7

Illustration on Page 13

SIZE — 12 x 18 inches.

**MATERIALS FOR BASIC FOUNDATION** — This may be made with any of the Lily Mills Company products listed below:—**DAISY Mercerized Crochet Cotton, Art. 65, size 20:**

1½-skeins Lt. Green with steel crochet hook No. 12;

or

**Lily MERCROCHET Mercerized Cotton, Art. 161, size 20:**

2½-balls Bright Nile Green with No. 12 hook;

or

**Lily SKYSTONE Mercerized Crochet Cotton, Art. 123:**

1½-balls Lt. Green with No. 7 hook: and

**MATERIALS FOR CALLA LILY TRIM—****Lily MERCROCHET Mercerized Cotton, Art. 161, size 30:**

1-ball each Beauty Pink and Hunter Green with No. 13 hook;

and

Lily Tatting Cotton, Art. 108:

1-ball Yellow with No. 14 hook.

**BASIC FOUNDATION**—With Green, make a chain 14 inches long. **ROW 1**—Holding back the last lp of each dc on hook, make 2 dc in 10th ch from hook, thread over and draw thru all 3 lps on hook (Cluster made), \* ch 4, a 2-dc Cluster in next ch, ch 2, sk 4 ch, dc in next ch, \*\* ch 2, sk 4 ch, a 2-dc Cluster in next ch. Repeat from \* across to measure 11 inches when stretched, ending row at \*\*. Cut and rip excess chain. **ROW 2**—Ch 1, turn, sc in 1st dc, \* (ch 2, dc) 4 times in center sp of next shell, ch 2, sc in next dc between shells. Repeat from \* across to end sp. **ROW 3**—Ch 8, turn, a 2-dc Cluster in center ch-2 sp of next shell, \* ch 4, a 2-dc Cluster in same sp, ch 2, tr in sc between shells, ch 2, aa 2-dc Cluster in center sp of next shell. Repeat from \* across, ending with ch 2, tr in end sc. **ROW 4**—Ch 1, turn, sc in 1st tr, \* (ch 2, dc) 4 times in center sp of next shell, ch 2, sc in next tr between shells. Repeat from \* across to end sp. Repeat Rows 3 and 4 for 17 inches (stretched). **NEXT ROW**—Ch 9, turn, 2 sc in center sp of next shell, \* ch 4, tr in sc between shells, ch 4, 2 sc in center sp of next shell. Repeat from \* across. **EDGE**—Ch 1, turn, 3 sc in 1st tr, \* (4 sc in next sp, sc in next 2 sts, 4 sc in next sp, sc in next tr) repeated across to corner, 4 sc in corner 9-ch sp, 3 sc in 5th (center) st of same sp, 4 sc in bal. of same sp, (sc between sps, 5 sc in next sp) repeated across to corner, 4 sc in corner sp, 3 sc in 5th st of same sp. Repeat from \* around, join with sl st in 1st 3 corner sc. **ROW 2**—Ch 9, sk 4 ch, dc in next 5 ch, dc in same sc on edge. \* Ch 1, turn, sc in 6 dc, sc in end ch. Ch 3, turn, dc in 7 sc, sk 4 sc on edge, (tr in next 2 sc) made into a Cluster, sk 4 sc, tr in next sc, ch 3, 5 dc over bar of this tr, dc in same sc at base of tr. Repeat from \* across to 1st of 3 sc at next corner. Complete square, then ch 1, sk next (corner) sc, tr in next sc, ch 3, 5 dc over bar of tr, dc at base of tr. Repeat from \* around doily. End with ch 1, sl st in corner of 1st square. Fasten off.

Stretch and pin doily right-side-down in true shape. Steam and press dry thru a cloth.

**CALLA LILY**—With Beauty Pink and No. 13 hook, ch 11, join with sl st to form ring. **ROW 1**—Ch 3, 23 dc in ring, join with sl st to top of ch-3. **ROW 2**—Ch 3, dc in same place with sl st, (2 dc in next dc) 7 times, (ch 1, dc in next dc) 8 times, ch 1, (2 dc in next dc) 8 times. Join to top of ch-3. **ROW 3**—Ch 3, dc in same place with sl st, (dc in next dc, dc in next ch-1 sp) 9 times, (dc in next dc, dc in next dc) 7 times. Join. **ROW 4**—Ch 3, dc in same place with sl st, (dc in next 4 dc, (ch 2, dc in next sp) 2 times, dc in next dc, dc in next 4 dc) 3 times, dc in same place with sl st, (dc in next 4 dc, dc in next dc) 5 times, (dc in next dc, dc in next dc) 3 dc in next sp) 4 times, dc in next dc, dc in next sp, tr in next dc) twice, 3 tr in next sp, (dc in next dc, 3 dc in next sp) 4 times, (dc in next 4 dc, 2 dc in next dc) 4 times, dc in next

4 dc. Join. **ROW 6**—Ch 3, dc in same place with sl st, (dc in next 4 sts, 2 dc in next st) 10 times, tr in next 3 sts, 5 tr in next st, tr in next 4 sts, (2 dc in next st, dc in next 4 sts) 9 times. Join. **ROW 7**—Ch 3, dc in same place with sl st, (dc in next 9 sts, 2 dc in next st) 6 times, dc in next 6 sts, in next st make 2 dc, ch 5, sl st in last dc for a p, and 2 dc. (Dc in next 9 sts, 2 dc in next st) 6 times. Join. Fasten off. **Pistil**—With Yellow Tatting Cotton and No. 14 hook, ch 12, sk 3 ch, dc in next 9 ch. **ROW 2**—Ch 3, turn, dc in 9 dc. Repeat Row 2 thru Row 7. **ROW 8**—Ch 3, turn, sk 1st dc, (dc in next 2 dc made into a Cluster) 4 times. **ROW 9**—Ch 3, turn, dc in 4 dc made into a Cluster, ch 3, sl st in Cluster for a p. Fasten off. Roll lengthwise and sew edges tog. down back. With right side inside, roll flower circle into a funnel at opposite side from point. Stretch top edges on front and roll back as in illustration. Tack in place, insert Pistil in tube and tack. Make 2 flowers.

**LEAF—Left Half**—With Hunter Green and No. 13 hook, ch 18, sk 4 ch, dc in next 5 ch, hdc in next 5 ch, sc in next 4 ch. **ROW 2**—Ch 1, turn, sc in 1st 5 sts, hdc in next 5 sts, dc in next 3 sts, 2 dc in end dc. **ROW 3**—Ch 3, turn, dc in 1st 3 dc, (ch 1, sk 1 st, dc in next st) 6 times. **ROW 4**—Ch 1, turn, sc in 1st dc, (2 sc in next sp, sc in next dc) twice, (2 hdc in next sp, hdc in next dc) twice, (2 dc in next sp, dc in next dc) twice, dc in next 2 dc. **ROW 5**—Ch 3, turn, dc in 1st 3 dc, (ch 1, sk 1 st, dc in next st) repeated across (9 sps). **ROW 6**—Ch 1, turn, sc in 1st dc, (sc in next sp, sc in next dc) 3 times, (hdc in next sp, hdc in next dc) 3 times, (dc in next sp, dc in next dc) 3 times, \* dc in next dc, 2 dc in end dc. **ROW 7**—Ch 3, turn, dc in 1st 4 dc, (ch 1, sk 1 st, dc in next st) 9 times. **ROW 8**—Repeat Row 6 to \*. Dc in next 3 dc. **ROWS 9 to 14 incl.**—Repeat Rows 7 and 8 three times. **ROW 15**—Ch 3, turn, dc in 1st 2 dc made into a Cluster, dc in next 2 dc, (ch 1, sk 1 st, dc in next st) 8 times, \* sk 1 sc, dc in end sc. **ROW 16**—Ch 1, turn, sk 2 dc, (sc in next sp, dc in next dc) twice, (hdc in next sp, hdc in next dc) twice, \* (dc in next sp, dc in next dc) 4 times, dc in next dc, 2 dc in end dc. **ROW 17**—Ch 3, turn, dc in 1st 3 dc made into a Cluster, \* (ch 1, sk 1 st, dc in next st) 7 times, sk 1 sc, dc in end sc. **ROW 18**—Repeat Row 16 to \*. (Dc in next sp, dc in next dc) twice, dc in next sp, 3 dc in next Cluster. **ROW 19**—Ch 3, turn, 3 dc in 1st dc, dc in next dc, (ch 1, sk 1 st, dc in next st) 6 times, sk 1 sc, dc in end sc. **ROW 20**—Ch 1, turn, sk 2 dc, (sc in next sp, sc in next dc) twice, (hdc in next sp, hdc in next dc) twice, (dc in next sp, dc in next dc) twice, dc in next 2 dc, 4 dc in end dc. **ROW 21**—Ch 3, turn, 3 dc in 1st dc, dc in next dc, (ch 1, sk 1 st, dc in next st) 4 times, sk 1 sc, dc in next sc. **ROW 22**—Ch 1, turn, sk 2 dc, sc in next sp, sc in next dc, hdc in next sp, hdc in next dc, (dc in next sp, dc in next dc) twice, dc in next 2 dc, 3 dc in end dc. **ROW 23**—Ch 3, turn, 3 dc in 1st dc, dc in next dc, (ch 1, sk 1 st, dc in next st) twice, sk 1 sc, dc in next sc. **ROW 24**—Ch 1, turn, sk 2 dc, sc in next sp, hdc in next dc, dc in next sp, dc in next dc, tr in next 2 dc, 3 tr in end dc. **ROW 25**—Ch 1, turn, sc in each st in last row, then make sc across ends of rows down to Row 1. Fasten off.

**Right Half**—Repeat thru Row 14. **ROW 15**—Repeat Row 15 to \*. Ch 1, sk 1 sc, dc in end sc. **ROW 16**—Ch 1, turn, sc in 1st dc, (sc in next sp, sc in next dc) twice, 2 sc in next sp, sc in next dc, (hdc in next sp, hdc in next dc) 3 times, (dc in next sp, dc in next dc) 3 times, dc in 2 end dc made into a Cluster. **ROW 17**—Repeat Row 17 to \*. (Ch 1, sk 1 st, dc in next st) 9 times. **ROW 18**—Ch 1, turn, sc in 1st dc, (sc in next sp, sc in next dc) 3 times, (hdc in next sp, hdc in next dc) 3 times, (dc in next sp, dc in next dc) twice, (dc in next sp, dc in end Cluster) made into a Cluster. **ROW 19**—Ch 3, turn, dc in 1st 4 dc made into a Cluster, (ch 1, sk 1 st, dc in next st) 7 times. **ROW 20**—Ch 1, turn, sc in 1st dc, (sc in next sp, sc in next dc) twice, (hdc in next sp, hdc in next dc) twice, (dc in next sp, dc in next dc) 3 times. **ROW 21**—Ch 3, turn, dc in 1st 2 dc made into a Cluster, dc in next dc, (Continued on Page 15)



*"Calla Lily Garden" Rug No. 8*

Illustration on Back Cover

**MATERIALS REQUIRED:****Lily Cotton Rug Yarn, Art. 241:**

14-skeins Salmon Rose  
4-skeins Med. Green  
3-skeins White; and

**DAISY Mercerized Crochet Cotton, Art. 65:**

1-skein Yellow.  
Steel crochet hooks Nos. H-6 and 12.

**SIZE** — 26 x 40 inches

**CENTER**—With Salmon Rose and No. H-6 hook, make a tight chain about 44 inches long. **ROW 1**—Ch 1, turn, sc in 2d ch from hook, (sk 1 ch, 3 sc in next ch, sk 1 ch, sc in next ch) repeated for 36 inches. Cut and rip excess chain. **ROW 2**—Ch 1, turn, sc in 1st sc, \* 3 sc in center sc of next 3-sc shell, sk 1 sc, sc in next sc (between shells). Repeat from \* across. Repeat Row 2 until work measures 20 inches, making an even no. of rows.

**BORDER**—**1st rnd**—Make a row of sc around Center, putting 3 sc in each corner. The number of sc on each side, counting from corner sc to corner sc incl. should divide evenly by 4, plus 1 sc. Join and fasten off. **2nd rnd**—Join Med. Green to center sc at one corner, \* ch 3, holding back the last lp of each dc on hook, make 2 dc in same sc, yarn over and draw thru all 3 lps on hook (Cluster made), 2 dc and 1 sc in same sc (corner shell made), \*\* ch 3, (dc in same sc and dc in next sc) made into a Cluster, dc in next 2 sc, sc in next sc. Repeat from \*\* across to center sc at next corner. Repeat from \* around rug. Join and fasten off. **3rd rnd**—Turn, join Sal. Rose to 2d dc on one corner shell, \* ch 3, (dc in same dc and dc in next dc) made into a Cluster, 2 dc in next dc, sc in next ch-3 lp (corner shell made), \*\* ch 3, (2 dc in same ch-3 lp) made into a Cluster, 2 dc in same lp, sc in ch-3 lp on next shell. Repeat from \*\* across to corner, making final sc in 2d dc on corner shell. Repeat from \* around rug. Join and fasten off. Repeat 3d rnd once each in White, Sal. Rose and Green, turning each row. **7th rnd**—With Green, make a sl st in each st around, working tightly for a firm edge. Join and fasten off.

**CALLA LILY**—**Base**—With White, ch 4, 2 dc in 4th ch from hook. **ROW 2**—Ch 3, turn, dc in 1st dc, 2 dc in next dc, dc in end ch-3. **ROW 3**—Ch 3, turn, dc in 4 dc, dc in end ch-3. **ROW 4**—Ch 1, turn, sc in 5 dc, sc in end ch-3. **Top**—Ch 1, turn, sk 1st 2 sc, dc in back lp of next sc, ch 1, dc in same place, (ch 1, dc) twice in back lp of next sc, ch 1, sk 1 sc, sc in back lp of end sc. **2nd rnd**—Ch 2, turn, (2 dc in next ch-1 sp, dc in next dc) 4 times, 2 dc in next ch-1 sp, ch 2, sc in same place, fold Base over on side towards you, leaving remaining front lps of 6 sc in Row 4 on working edge. Ch 2, sk 1st sc, sc in front lp of next sc, (ch 2, sc in front lp of next sc) twice. **3rd rnd**—Ch 2, turn, sc in 1st ch-2 lp, (ch 2, sc in next sp) 3 times, ch 2, sc in next dc, (ch 2, sk 1 dc, sc

in next dc) 3 times, ch 3, sc in same place with last sc, (ch 2, sk 1 dc, sc in next dc) 3 times, ch 2, sk 1 dc, (sc, ch 2 sc) in next ch-2, ch 2, sc in remaining lp of next sc in Row 4, ch 2, sl st in remaining lp of next sc. Fasten off on back. **Pistil**—With Yellow and No. 12 hook, ch 10, sk 1st : ch, dc in next 7 ch. **ROW 2**—Ch 3, turn, dc in 7 dc. Repeat Row 2 thru Row 5. **ROW 6**—Ch 1, turn, sc in 1st dc, (sk 1 dc, sc in next dc) 3 times. **ROW 7**—Ch 1, turn, (sk 1 sc, sc in next sc) twice. **ROW 8**—Ch 1, turn, sk 1 sc, sc in last sc. Fasten off. Roll lengthwise and sew edges tog. down back. Sew in throat of Lily. Make 7 Lilies.

**LEFT END SPRAY**—**Leaf**—With Green, ch 26, tr in 8th ch from hook, (ch 1, sk 1 ch of long ch, tr in next ch) twice (ch 1, sk 1 ch, dc in next ch) 3 times, (ch 1, sk 1 ch, hdc in next ch) twice, ch 1, sk 1 ch, sc in next ch, ch 1, sk 1 ch, sc in end ch. Working on other side of ch, ch 2, sk 1 ch, sc in next ch, ch 2, sk 1 ch, hdc in next ch, (ch 2, sk 1 ch dc in next ch) twice, (ch 2, sk 1 ch, tr in next ch) 3 times (ch 1, sk 1 ch, tr in next ch) twice, ch 6, sc in same place with last tr. **2nd rnd**—5 sc in next ch-7 sp, ch 2, sl st in last sc for a p, 2 sc in bal. of same ch-7 sp, (2 sc in next ch-1 sp) 9 times, (sc, ch 3, sc) in 1 lp of end sc, (3 sc in next ch-2 sp) 7 times, (2 sc in next ch-1 sp) twice, (2 sc, a ch-2 p and 4 sc) in next ch-6 sp, join with sl st in next sc, ch 11 for stem. Fasten off. **Long Flower Stem**—With Green, ch 38, sk 1st ch, sl st in next 37 ch, ch 3, 4 dc in same st with last sl st. Fasten off. Sew Calyx around end of one Lily. **Short Flower Stem**—Ch 30 and finish as Long Stem. Sew to a 2d Lily. **Ground Line**—With Green, ch 20, sk 1st ch, sc in next 19 ch. Fasten off. Sew on Center 1 inch from left end and 1 $\frac{3}{8}$  inches from bottom. Sew Leaf Stem to Long Flower Stem  $\frac{1}{2}$  inch from end. Sew Short Flower Stem to Long Stem 1 inch above Leaf Stem. Arrange Spray above Ground Line pin in place, then hem down closely. Repeat on other end of Center, except turn leaf before making 2d rnd,—to reverse it.

**CENTER SPRAY**—**Ground Line**—With Green, ch 45, sk 1 ch, sc in next 44 ch. Fasten off. Sew across middle of Center 1 $\frac{3}{8}$  inches from bottom. **Left Flower Stem**—Ch 29, sk 1st ch, sl st in next 28 ch, make Calyx and fasten off. Sew Calyx on a Lily. **Right Flower Stem**—Ch 27 and finish. Sew on a 2d Lily. **Center Flower Stem**—**Bottom Piece**—Ch 22, sk 1st ch, sl st in next 21 ch. Fasten off. **Top Piece**—Ch 6, sk 1st ch, sl st in next 5 ch, make Calyx and fasten off. Sew on a 3d Lily. **Center Leaf**—Repeat Leaf ch 19 for stem. **Right Leaf**—Repeat Leaf, ch 8 for stem. **Left Leaf**—Turn Leaf before making 2nd rnd. Ch 12 for stem. Arrange Spray above Ground Line as in illustration, pin in place, then hem down.

Stretch and pin rug right-side-down in true shape. Steam and press dry thru a cloth.

**TABLE DOILY IN APPLIQUED CROCHET***(Continued from Page 14)*

(ch 1, sk 1 st, dc in next st) 5 times, ch 1, sk 1 sc, sc in end sc. **ROW 22**—Ch 1, turn, sc in 1st sc, sc in next sp, sc in next dc, (hdc in next sp, hdc in next dc) twice, (dc in next sp, dc in next dc) twice, tr in next sp, \* tr in 2 end dc. **ROW 23**—Ch 4, turn, tr in 1st 2 tr, (ch 1, sk 1 st, dc in next st) 5 times, ch 1, sk 1 sc, sc in end sc. **ROW 24**—Repeat Row 22 to \*. Tr in next tr, 2 tr in end tr. **ROW 25**—Ch 4, turn, 2 tr in 1st tr, tr in next 2 tr, (ch 1, sk 1 st, dc in next st) 5 times, ch 1, sk 1 sc, sc in end sc. **ROW 26**—Ch 1, turn, sc in 1st sp, sc in next dc, (hdc in next sp, hdc in next dc) twice (dc in next sp, dc in next dc) 3 times, tr in next 2 tr, 3 tr in end tr. **ROW 27**—Ch 4, turn, 2 tr in 1st tr, 2 tr in next tr, (ch 1, sk 1 st, dc in next st) 5 times, ch 1, sk 1 st, hdc in next st, ch 1, sk 1 st, sc in next st. **ROW 28**—Ch 1, turn, sc in 1st sp, sc in next hdc, (hdc in next sp, hdc in next dc) twice, (dc in next sp, dc in next st) 4 times, dc in next 2 tr,

4 tr in end tr. **ROW 29**—Repeat Row 25 of "Left Half". Sew the 2 halves tog. going thru both lps of each st. **Stem**—Ch 40, sk 2 ch, hdc in next 2 ch, dc in each remaining ch. Fasten off. Sew to base of Leaf.

**LONG FLOWER STEM**—Make a chain 7 $\frac{3}{4}$  inches long, sk 2 ch, hdc in next 2 ch, dc in each remaining ch, then working across bar of last dc, insert hook b and make dc and 8 tr across each of 1st 9 sts. Fasten off one Lily.

**MIDDLE STEM**—Make chain for other Flower Stem. Sew Calyx Leaf Stem to Long Stem 1 inch from to Long Stem as in illustration.

Arrange Flower Spray on right end of Basic Foundation and hem down. Sew on back.





# Calla Lily

crochet designs

