

# BEAUTIFY THE HOME

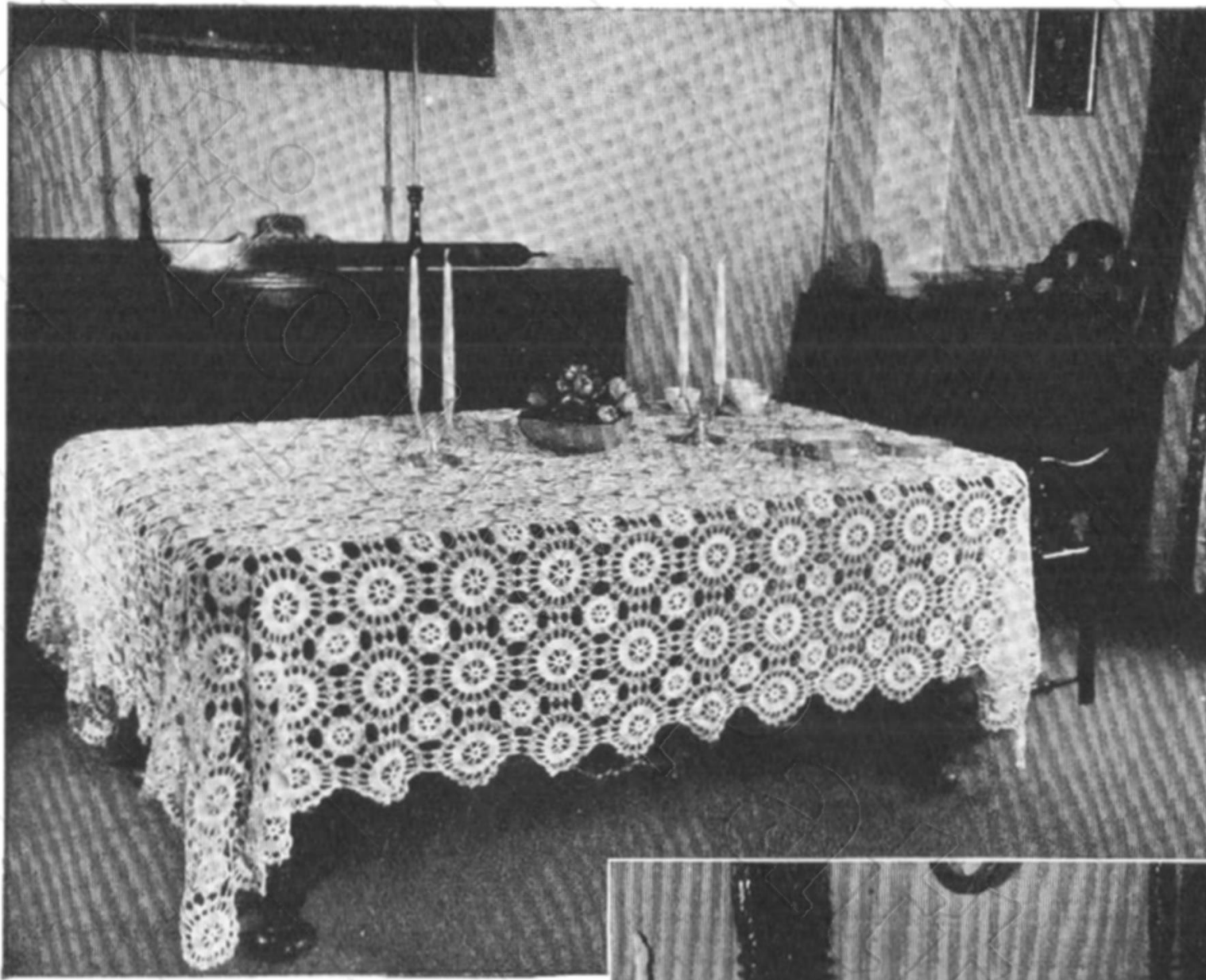
with crocheted articles of

**CLARK'S O. N. T.  
KNITTING and CROCHET  
COTTON**

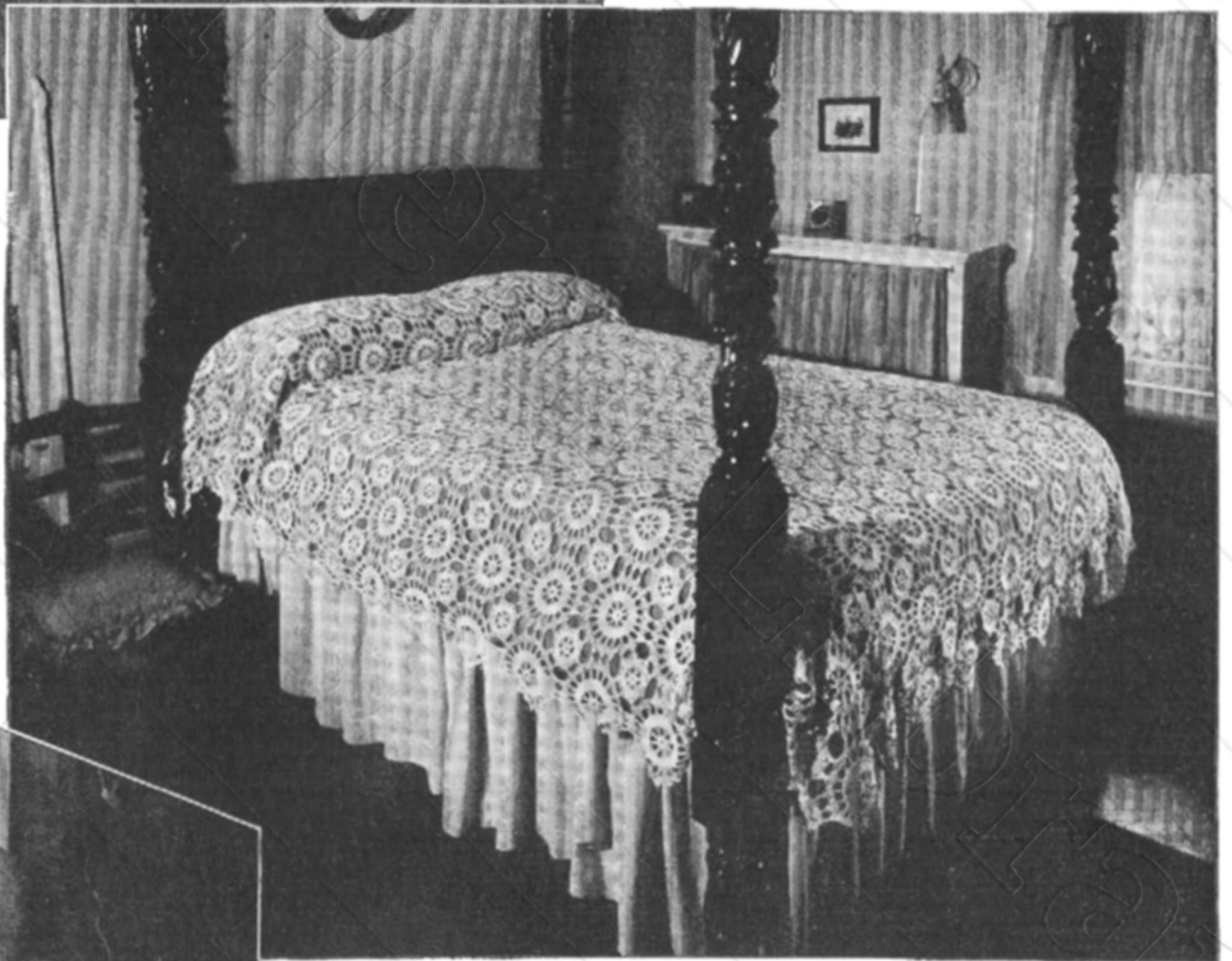
or

**J. & P. COATS CROCHET CORD**

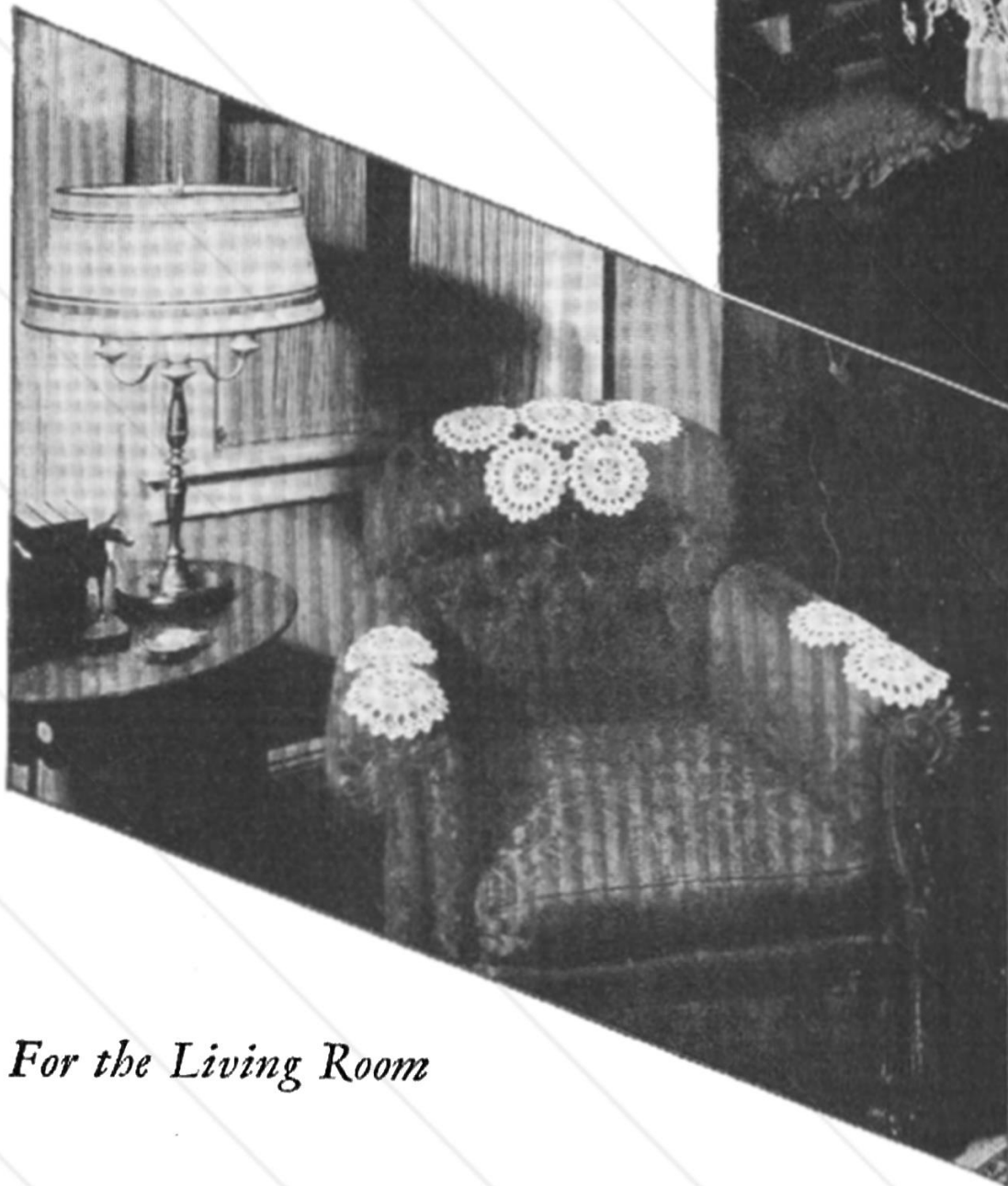
White, Ecu,  
and Boilfast Colors



*For the Dining Room*



*For the Bedroom*



*For the Living Room*

## STAR WHEEL DESIGN

This charming design has come down through the years. The directions are simple to follow and by a combination of motifs many lovely articles for the home may be created. Attractiveness and character can be added to the room by the introduction of these accessories in color. The lacy bedspread is made by using both the large and small motifs. Equally attractive and appropriate is this same design developed into a formal lace table cloth having all the beauty of real hand made lace.

**It is advisable to buy at one time sufficient material for completing the article that is to be made. Note the number of yards of thread in the ball you buy and determine the amount you will need.**



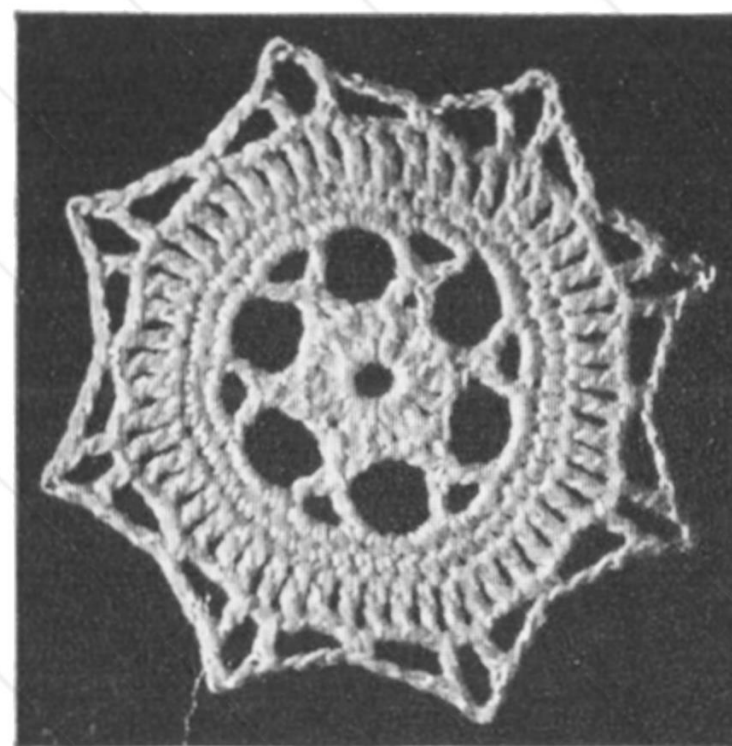
# STAR WHEEL DESIGN No. 200

(Illustrated on Cover Page)

**MATERIALS:** Clark's O.N.T. Knitting and Crochet Cotton or J. & P. Coats Crochet Cord in White, Ecreu, or Boilfast colors. Milward's steel crochet hook No. 3.

A bedspread or table cloth  $2\frac{1}{4} \times 3$  yards requires approximately 208 large motifs (37 yards of thread each) and 192 small motifs (14 yards of thread each). A chain set as illustrated is made of the large motifs only. Other smaller articles like table mats, runners, etc., may be made by placing a combination of the motifs together as desired.

The star wheels are made separately and then sewed firmly together at the points.

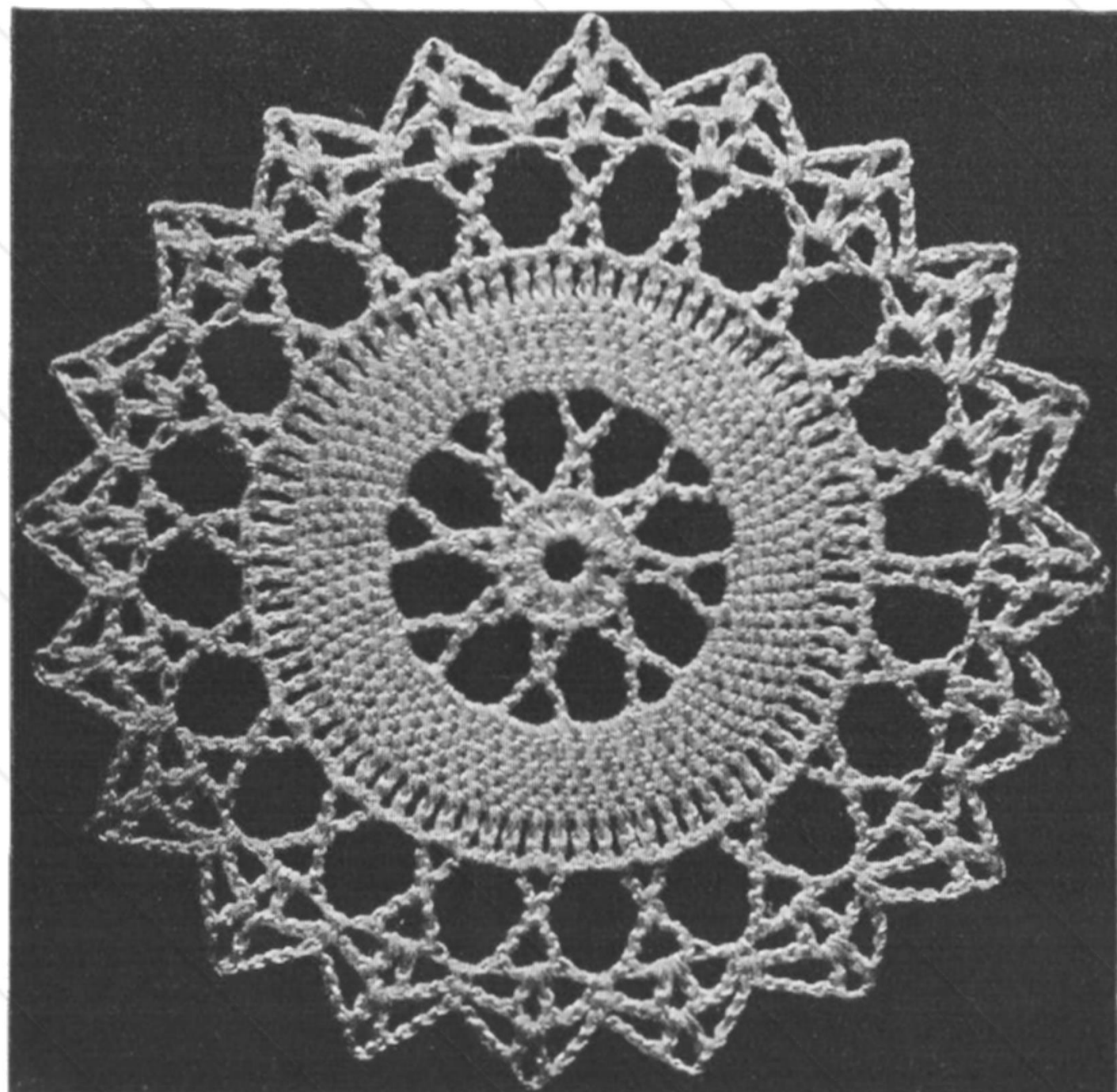


**LARGE MOTIF:** Ch 10 and join with sl st to form ring. **1st rnd:** Ch 3, 23 d c in ring. Join with sl st to 3rd st of ch-3 first made. **2nd rnd:** Ch 10, and complete a cross st as follows: Thread over twice, insert hook in 8th ch from hook, draw thread through (4 loops on hook) thread over once, skip 1 d c and insert hook in next d c, draw thread through (6 loops on hook), thread over, and draw off 2 loops at a time 5 times. \* Ch 3, thread over 4 times, insert hook in next st and draw thread through (6 loops on hook), thread over, and take off 2 loops at a time twice, then thread over, skip 1 d c, insert hook in next, draw thread through (6 loops on hook) thread over, and take off 2 loops at a time 5 times. Ch 3, 1 d c in center point of the cross, thus completing the cross. Repeat from \* until there are 8 cross sts around circle. Join last ch-3 with sl st to 7th ch of ch-10 first made. **3rd rnd:** 5 s c in each ch-3 loop. **4th to 7th rnds incl:** 1 s c in each s c of previous rnd. **8th rnd:** Ch 3, 1 d c in 1st s c, \* ch 1, 1 d c in next s c, and repeat from \* to end of rnd. Then ch 1, and join with sl st to 3rd st of ch-3 first made. **9th rnd:** Ch 10, and complete

cross st as before, skipping 2 d c between each leg of cross st and inserting hook under ch-1 loop. Ch 3 between each cross st. Skip 2 d c between each cross st. Repeat around (20 cross sts) and join last ch-3 with sl st to 7th st of 1st ch-10. **10th rnd:** Ch 5, \* 1 d c in same loop, ch 3, 1 s c over next ch-3 loop, ch 3, 1 d c in top loop of next cross st, ch 2, and repeat from \* to end of rnd. Join with s c in ch-5 loop first made. **11th rnd:** Ch 6, 1 d c in same loop, \* ch 4, 1 s c in next s c of previous rnd, ch 4, 1 d c in next ch-2 loop, ch 3, 1 d c in same loop, and repeat from \* to end of rnd, joining with sl st in 3rd st of ch-6 first made.

**SMALL MOTIF:** Ch 8, join with sl st to form ring. **1st rnd:** Ch 3, 17 d c in ring. Join with sl st to 3rd st of ch-3 first made. **2nd rnd:** Ch 8, and complete a cross st as follows: Thread over once, insert hook in 6th ch from hook, and draw thread through (3 loops on hook), thread over once, skip 1 d c, insert hook in next, draw loop through (5 loops on hook), thread over, take off 2 loops at a time four times, ch 3, skip 1 d c, thread over twice, insert hook in next st, draw thread through, and take off 2 loops, then thread over, skip 1 st, draw thread through, and take off 2 loops at a time four times. Ch 3, and complete cross st. Repeat around (6 cross sts). **3rd rnd:** \* 4 s c in each ch-3 loop of cross st, and 5 s c in each ch-3 loop between cross sts. Repeat from \* to end of rnd (54 s c). **4th rnd:** 1 s c in each s c of previous rnd. **5th rnd:** Ch 3, 1 d c in 1st s c of previous rnd, \* ch 1, 1 d c in next s c, and repeat from \* to end of rnd. Join with sl st to 3rd st of ch-3 first made. **6th rnd:** Ch 5, 1 d c under next ch-1, \* ch 3, skip 3 d c, 1 s c under next ch-1, ch 3, skip 3 d c, 1 d c under next ch-1, ch 3, skip 1 d c, 1 d c under next ch-1, repeat from \* to end of rnd. Join with s c in ch-5 first made. There should be 8 points.

**TO JOIN MOTIFS,** place motifs flat on table, arranging them in position dependent upon the article to be made. For the bedspread or table cloth a small motif is set in to fill the space left by four large motifs, thus two of the points are attached to two points of each large motif. This will leave three points of the large motif to be joined to a corresponding three points of the adjacent large motif. With a needleful of thread sew the points firmly together with over and over stitch. When article is completed, lay flat and press carefully using a damp cloth.





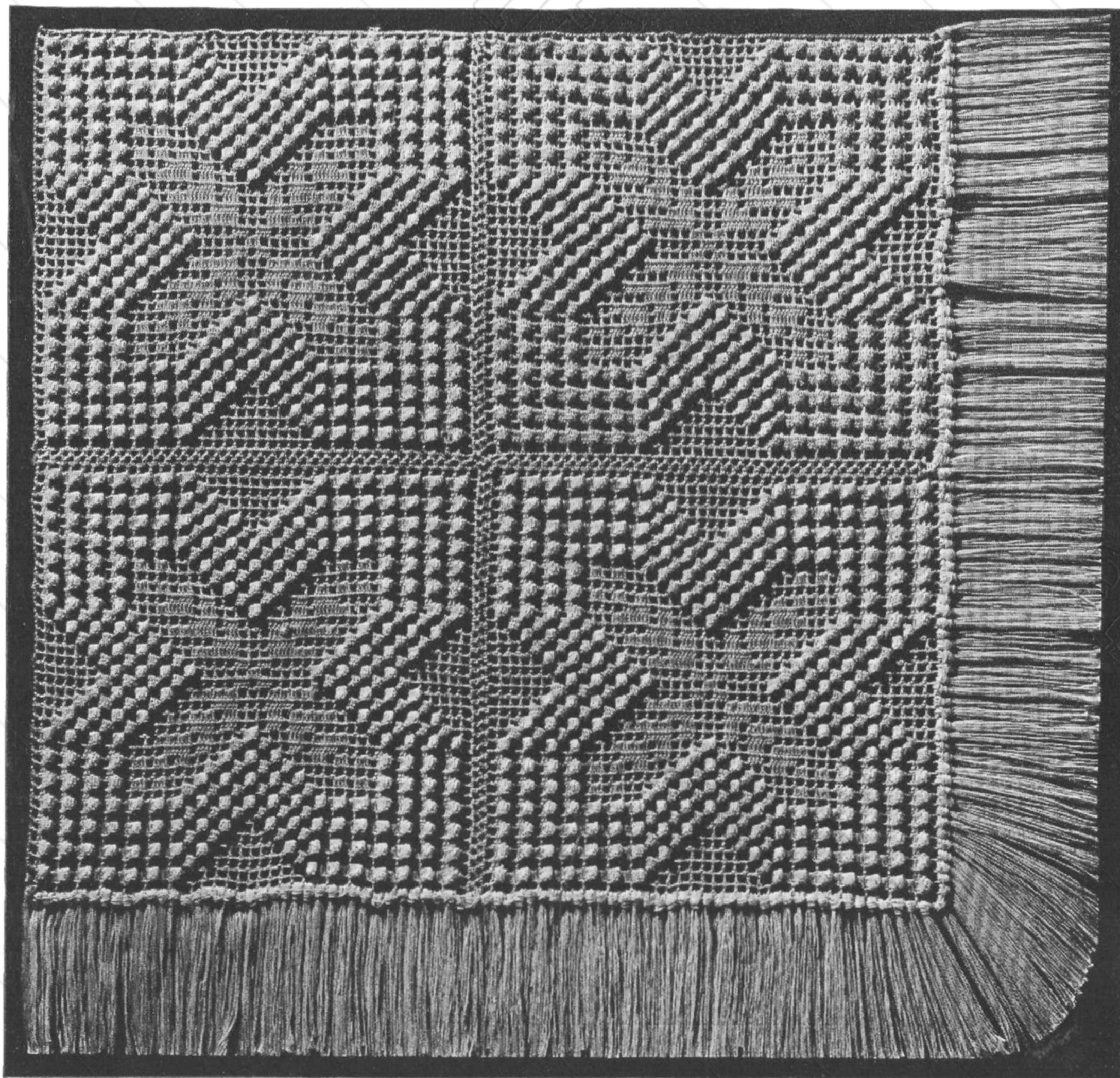
## TUFTED FERN BLOCK No. 201

**MATERIALS:** Clark's O.N.T. Knitting and Crochet Cotton or J. & P. Coats Crochet Cord in White, Ecru, or Boilfast colors. Milward's steel crochet hook No. 5. 1 block measures about 8 x 9½ inches, requiring about 260 yards each.

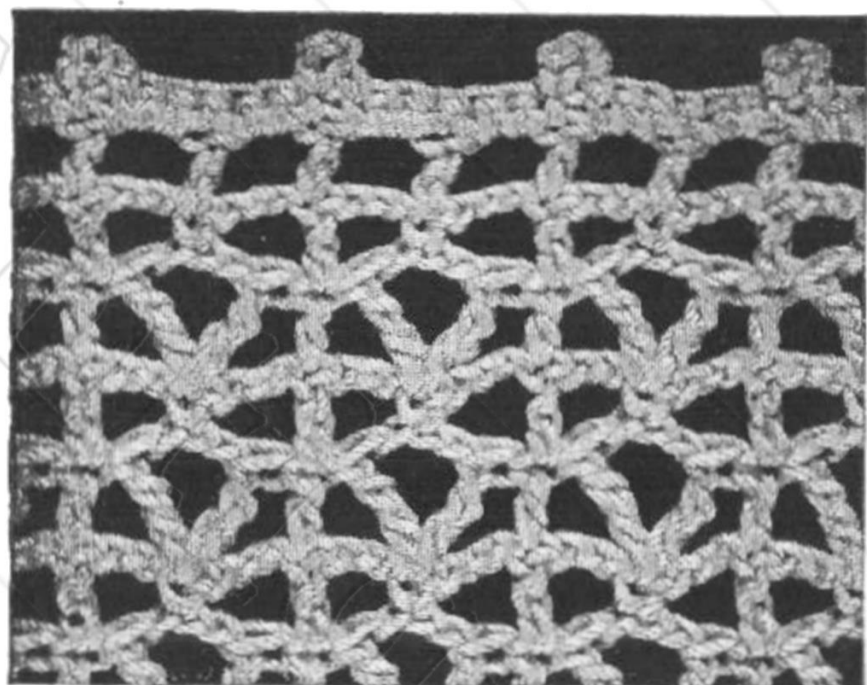
**ABBREVIATIONS AND EXPLANATIONS:** Space (sp)—1 d c, ch 2, skip 2, 1 d c in next. Block (bl)—1 d c in d c, 2 d c in sp, 1 d c in d c. Tuft or Popcorn Stitch (t)—6 d c in sp, drop loop from hook, insert hook in 1st d c of this group, pick up loop, and pull through, then make 1 ch to fasten t tightly.

To begin, ch 121. **1st row:** 1 d c in 7th ch from hook, [\* ch 2, skip 2 sts, 1 d c in next (1 sp)]. Repeat from \* across (39 sps). Ch 5, turn. **2nd row:** 1 d c in d c (1 sp), (1 t in next sp, 1 bl in next) 6 times, 1 t, 11 sps, (1 t, 1 bl) 6 times, 1 t, 1 sp, ch 5, turn. **3rd row:** 1 sp, 1 bl, 12 sps, 1 t, 9 sps, 1 t, 12 sps, 1 bl, 1 sp. **4th row:** 1 sp, 1 t, 1 sp, (1 t, 1 bl) 5 times, 1 t, 1 sp, 1 t, 7 sps, 1 t, 1 sp, (1 t, 1 bl) 5 times, (1 t, 1 sp) twice. **5th row:** (1 sp, 1 bl) twice, 10 sps, 1 t, 1 sp, 1 t, 5 sps, 1 t, 1 sp, 1 t, 10 sps, (1 bl, 1 sp) twice. **6th row:** (1 sp, 1 t) 3 times, (1 bl, 1 t) 4 times (1 sp, 1 t) twice, 3 sps, (1 t, 1 sp) twice, (1 t, 1 bl) 4 times, (1 t, 1 sp) 3 times. **7th row:** (1 sp, 1 bl) 3 times, 8 sps, (1 t, 1 sp) 5 times, 1 t, 8 sps, (1 bl, 1 sp) 3 times. **8th row:** (1 sp, 1 t) 4 times, (1 bl, 1 t) 3 times, (1 sp, 1 t) 6 times, (1 bl, 1 t) 3 times, (1 sp, 1 t) 3 times, 1 sp. **9th row:** (1 sp, 1 bl) 4 times, 6 sps, (1 t, 1 sp) 5 times, 1 t, 6 sps, (1 bl, 1 sp) 4 times. **10th row:** (1 sp, 1 t) 4 times, (1 sp, 1 bl) twice, 3 sps, (1 t, 1 sp) 4 times, 1 t, 3 sps, (1 bl, 1 sp) twice, (1 t, 1 sp) 4 times. **11th row:** (1 sp, 1 bl) 4 times, 8 sps, (1 t, 1 sp) 3 times, 1 t, 8 sps, (1 bl, 1 sp) 4 times. **12th row:** (1 sp, 1 t) 4 times, (1 sp, 1 bl) 3 times, 3 sps, (1 t, 1 sp) twice, 1 t, 3 sps, (1 bl, 1 sp) 3 times, (1 t, 1 sp) 4 times. **13th row:** (1 sp, 1 bl) 4 times, 4 sps, 2 bls, 1 sp, 1 bl,

2 sps, 1 t, 1 sp, 1 t, 2 sps, 1 bl, 1 sp, 2 bls, 4 sps, (1 bl, 1 sp) 4 times. **14th row:** (1 sp, 1 t) 4 times, 3 sps, 3 bls, 1 sp, 1 bl, 3 sps, 1 t, 3 sps, 1 bl, 1 sp, 3 bls, 3 sps, (1 t, 1 sp) 4 times. **15th row:** 2 sps, (1 t, 1 sp) 3 times, 1 t, 5 sps, 2 bls, 1 sp, 1 bl, 3 sps, 1 bl, 1 sp, 2 bls, 5 sps, (1 t, 1 sp) 3 times, 1 t, 2 sps. **16th row:** 3 sps, (1 t, 1 sp) 3 times, 1 t, 2 sps, 4 bls, 1 sp, 1 bl, 3 sps, 1 bl, 1 sp, 4 bls, 2 sps, (1 t, 1 sp) 3 times, 1 t, 3 sps. **17th row:** 4 sps, (1 t, 1 sp) 3 times, 1 t, 5 sps, 2 bls, 3 sps, 2 bls, 5 sps, (1 t, 1 sp) 3 times, 1 t, 4 sps. **18th row:** 5 sps, (1 t, 1 sp) 3 times, 1 t, 2 sps, 4 bls, 3 sps, 4 bls, 2 sps, (1 t, 1 sp) 3 times, 1 t, 5 sps. **19th row:** 6 sps, (1 t, 1 sp) 3 times, 1 t, 5 sps, 1 bl, 1 sp, 1 bl, 5 sps, (1 t, 1 sp) 3 times, 1 t, 6 sps. **20th row:** 7 sps, (1 t, 1 sp) 3 times, 1 t, 5 sps, 1 bl, 5 sps, (1 t, 1 sp) 3 times, 1 t, 7 sps. Hereafter reverse design, making 21st row same as 19th row, 22nd row same as 18th row, and so on until 39 rows are made, the 39th row being same as 1st row. **TO JOIN BLOCKS,** catch with s c (single crochet) in 1st sp, ch 1, s c in same position on 2nd block, ch 2, 1 s c in next sp of 1st block, ch 1, 1 s c in next sp of 2nd block, and so on along one side. **FRINGE.** For fringe, knot 6 strands of cotton into each loop all around bedspread.







*Detail of Stitch*

## LUNCHEON OR TEA SET No. 220

**MATERIALS:** Clark's O.N.T. Knitting and Crochet Cotton, or J. & P. Coats Crochet Cord. Milward's steel crochet hook No. 3.

A place mat 12 x 17 inches requires about 400 yards of thread. These are popular in White or Ecu, but with the present vogue for color, many prefer to use one of the soft Boilfast pastels which adds attractiveness to the table setting.

**PLACE DOILY.** Ch 155 (to measure about 17½ inches). **1st row:** S c in 8th st from hook, \* ch 3, skip 2 ch, d c in next, ch 3, skip 2 ch, s c in next, repeat from \* to end of row ending with d c. Ch 4, turn. **2nd row:** \* 1 tr in s c of previous row, ch 3, 1 tr in same s c, 1 d c in d c, and repeat from \* to end of row, placing last d c in 3rd st of ch loop at beginning of previous row. Ch 6, turn. **3rd row:** 1 s c in center st of ch-3 of previous row, \* ch 3, 1 d c in d c, ch 3, s c in center st of next ch-3, and repeat from \* to end of row, placing last d c in the 4th st of the ch-4 of previous row. Ch 4, turn. **4th to 48th rows incl:** Repeat rows 2 and 3 alternately until place doily measures about 12 inches, ending work with row 3. Do not break off thread.

**EDGING.** Begin at upper left hand corner of place doily and work across short end first. Ch 5, d c in same st from which ch-5 started, forming a corner space (sp), ch 2, d c in end of each row with ch-2 between each d c till next corner. Then ch 4, d c in same st as last d c, ch 2, d c in s c of 1st row, ch 2, d c in d c of 1st row. Continue across row. Ch 4 at corner, d c in same st as last d c, and continue. Work other end in the same way as first end. Continue across doily, placing d c in d c and d c in center st of ch-3, always making ch-2 between. Join with sl st. Ch 4 for corner picot (p), 2 s c in corner sp, \* 1 s c in d c, 2 s c in next sp, 1 s c in next d c, 1 p, 2 s c in next sp, and repeat from \* all around, always making 2 s c, 1 p, and 2 s c in corner sp. Join with sl st and break off thread. Make as many more place doilies as desired.

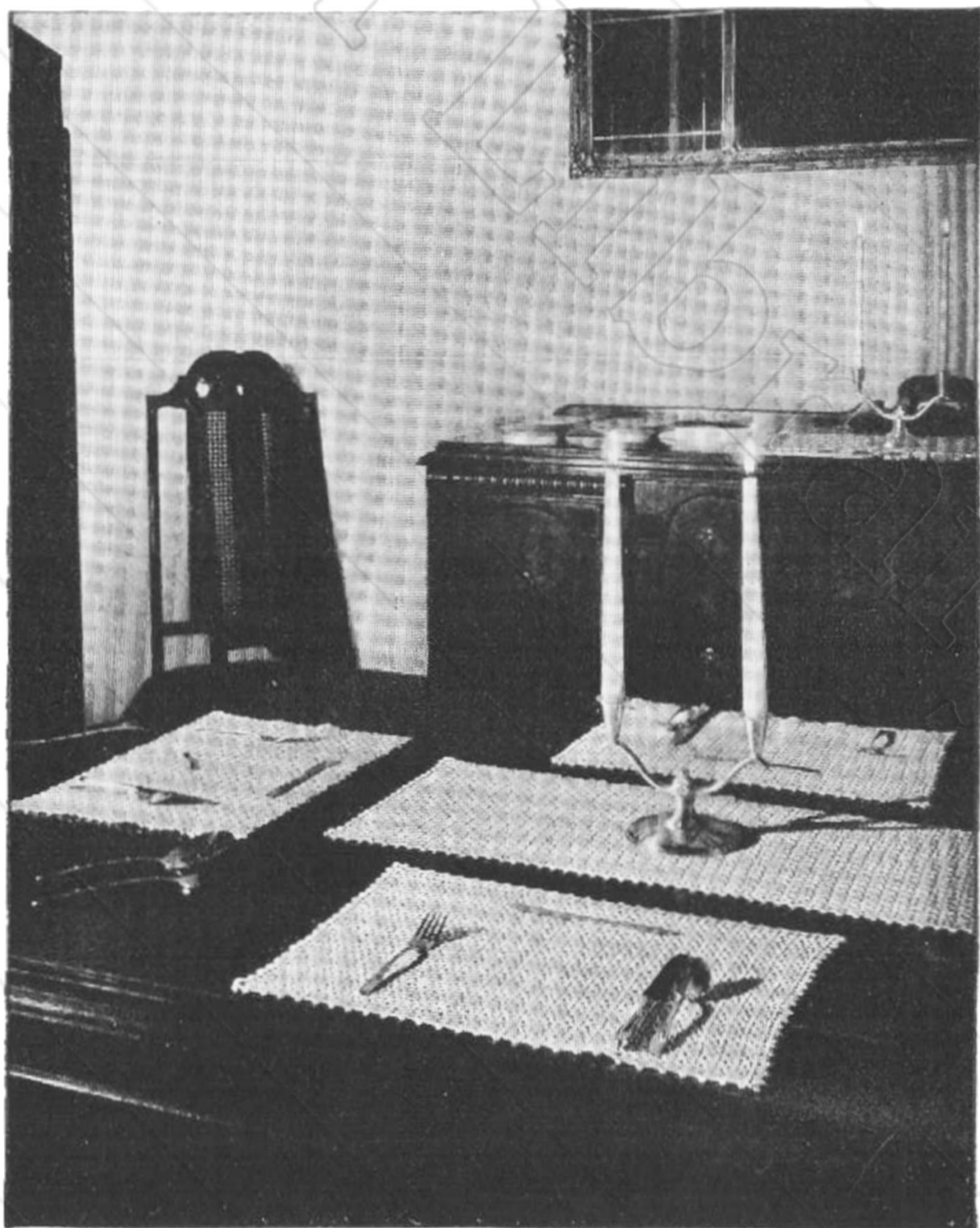
**RUNNER.** Ch 115, to measure about 12½ inches. Follow same directions as for place doily, until

runner is about 30 inches long, then finish edge in same way as for place doily.

### COLOR IN THE HOME

Boilfast colors in Clark's O. N. T. Knitting and Crochet Cotton and J. & P. Coats Crochet Cord enable you to bring color into home furnishings in charming and unusual ways. Any of these designs are most effective when colored threads are used alone or in combination with White or Ecu.

Colors available are 9 Yellow, 12 Black, 25 Crystal Blue, 26 Nile Green, 30 Lavender, 38 Dark Orange, 40 French Rose, 55 Navy Blue, 58 Dark Red, \*61A Dark Ecu, 68 Skipper Blue, 70 Blue Jewel, 82 Autumn Glow, 84 Beige, 88 Peach, 102 Coffee Brown, 106 Sport Green, 116 Blossom Pink, 126 Spanish Red, White, Ecu.



Additional designs may be found in these books—Complete Collection of Crochet Designs, Decorating the Home, The Book of Bedspreads and latest Crochet Fashion Book. These may be obtained from your local dealer, or if he does not have them, send to the Spool Cotton Company, Department 558, 350 Fifth Avenue, New York, enclosing 10c for each book desired.